

Port of Barcelona traffic statistics

Accumulated data December 2023

Statistics Service

Index

Traffic indicators

Total traffic	3
Main indicators	4
Breakdown of total traffic	5
Breakdown of traffic in transit	6
Monthly evolution of traffic	7

Container traffic

TEU evolution	8
Container traffic (TEU)	9

Passenger traffic

Passenger traffic	10
Passenger classification	11

Automobile traffic

Automobile traffic	12
--------------------	----

Short Sea Shipping traffic (SSS)

SSS Goods classification	13
SSS General cargo and Motorways of the sea (MoS)	14
SSS Ranking countries	15

Vessel traffic

Vessel traffic	16
----------------	----

Goods traffic

Mode of packaging and navigation	17
Goods by classification 4.3.7.	18
Goods ranking	19
Containerized goods by classification 4.3.7.	20

Maritime traffic by origin/destination

Geographical areas. Tonnes	21
Geographical areas. Full TEU non transit	22
Ranqing countries. Full TEU non transit	23

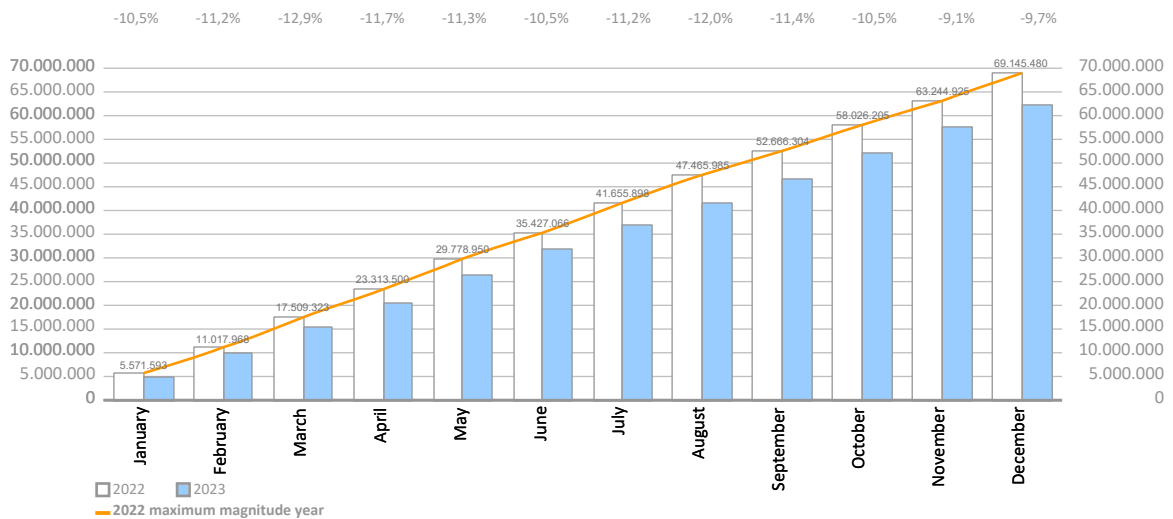
Railway traffic

Evolution of railway traffic (TEU and automobile)	24
Evolution of railway traffic (Solid and liquid bulk)	25
Railway gauge traffic	25

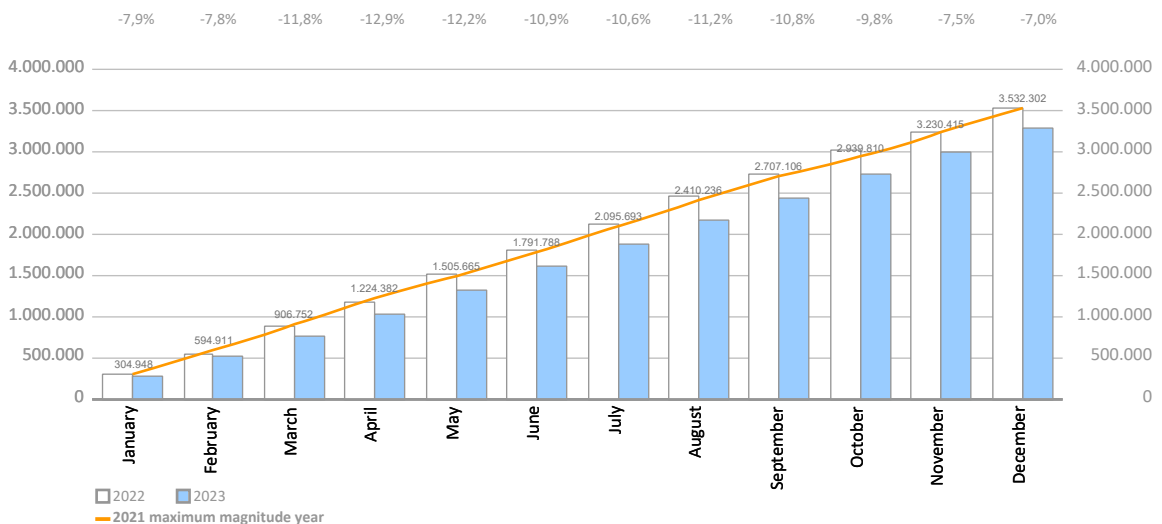
TRAFFIC INDICATORS

Total traffic	Monthly accumulated				% 23-22 accum. November	% 23-22 accum. October	Total traffic 2022
	2022	2023	Diff. 23-22	%			
Total throughput (tonnes)	69.145.480	62.461.149	-6.684.331	-9,7%	-9,1%	-10,5%	69.145.480
Supplies	1.854.585	1.563.241	-291.344	-15,7%	-15,1%	-18,0%	1.854.585
Fishing	3.201	1.544	-1.657	-51,8%	-51,3%	-52,0%	3.201
TOTAL TRAFFIC (tonnes)	71.003.267	64.025.934	-6.977.332	-9,8%	-9,3%	-10,7%	71.003.267
TEU	3.525.043	3.280.035	-245.008	-7,0%	-7,5%	-9,8%	3.525.043
UTI	419.191	413.890	-5.301	-1,3%	-1,0%	-1,0%	419.191
Automobiles (units)	591.158	790.319	199.161	33,7%	43,0%	48,0%	591.158
Vessels (units)	8.713	8.766	53	0,6%	1,4%	1,6%	8.713
Railway traffic (units)	11.234	10.439	-795	-7,1%	-6,9%	-7,9%	11.234
Cruise passengers (units)	2.334.305	3.568.901	1.234.596	52,9%	54,6%	53,7%	2.334.305
Ferry passengers (units)	1.596.267	1.735.243	138.976	8,7%	9,1%	9,2%	1.596.267
Automobile passengers (units)	484.993	515.256	30.263	6,2%	6,4%	6,3%	484.993

Monthly evolution of the accumulated traffic of goods. Tonnes



Monthly evolution of the accumulated traffic of goods. TEU



TRAFFIC INDICATORS

Main indicators	Monthly accumulated				Last 12 months	Total traffic 2022	% 12 months-2022
	2022	2023	Diff. 23-22	%			

Goods indicators by navigation and operation (tonnes)

	2022	2023	Diff. 23-22	%	Last 12 months	Total traffic 2022	% 12 months-2022
Navigation (t)	69.145.480	62.461.149	-6.684.331	-9,7%	62.461.149	69.145.480	-9,7%
Domestic	8.286.217	8.023.640	-262.578	-3,2%	8.023.640	8.286.217	-3,2%
Foreign	60.859.263	54.437.510	-6.421.753	-10,6%	54.437.510	60.859.263	-10,6%
Operation (t)	69.145.480	62.461.149	-6.684.331	-9,7%	62.461.149	69.145.480	-9,7%
Loaded	20.216.991	19.174.180	-1.042.811	-5,2%	19.174.180	20.216.991	-5,2%
Unloaded	23.315.242	22.736.181	-579.061	-2,5%	22.736.181	23.315.242	-2,5%
Transit	25.613.248	20.550.789	-5.062.459	-19,8%	20.550.789	25.613.248	-19,8%

Goods indicators by main units

	2022	2023	Diff. 23-22	%	Last 12 months	Total traffic 2022	% 12 months-2022
Containers (TEU)	3.525.043	3.280.035	-245.008	-7,0%	3.280.035	3.525.043	-7,0%
TEU O/D	1.972.755	1.961.666	-11.089	-0,6%	1.961.666	1.972.755	-0,6%
TEU transit	1.552.288	1.318.369	-233.919	-15,1%	1.318.369	1.552.288	-15,1%
Containerized tonnes	37.626.005	33.524.583	-4.101.423	-10,9%	33.524.583	37.626.005	-10,9%
Level of containerization	76,75%	74,92%			74,92%	76,75%	
Passengers (u)	3.930.572	5.304.144	1.373.572	34,9%	5.304.144	3.930.572	34,9%
Regular line	1.596.267	1.735.243	138.976	8,7%	1.735.243	1.596.267	8,7%
Pleasure cruises	2.334.305	3.568.901	1.234.596	52,9%	3.568.901	2.334.305	52,9%
Automobiles (u)	591.158	790.319	199.161	33,7%	790.319	591.158	33,7%
Loaded	327.879	412.168	84.289	25,7%	412.168	327.879	25,7%
Unloaded	178.686	266.194	87.508	49,0%	266.194	178.686	49,0%
Transit	84.593	111.957	27.364	32,3%	111.957	84.593	32,3%
Vessels (u)	8.713	8.766	53	0,6%	8.766	8.713	0,6%
Number of calls	8.713	8.766	53	0,6%	8.766	8.713	0,6%
GT	350.874.748	374.300.716	23.425.968	6,7%	374.300.716	350.874.748	6,7%
Average tonnes by vessel	7.936	7.125	-811	-10,2%	7.125	7.936	-10,2%
UTI	419.191	413.890	-5.301	-1,3%	413.890	419.191	-1,3%
Domestic	253.675	259.441	5.767	2,3%	259.441	253.675	2,3%
% Full	61,3%	61,9%			61,9%	61,3%	
Foreign	165.516	154.449	-11.068	-6,7%	154.449	165.516	-6,7%
% Full	92,7%	91,5%			91,5%	92,7%	

TRAFFIC INDICATORS

Breakdown of total traffic (tonnes)	Monthly accumulated				% 23-22 accum. November	% 23-22 accum. October	% of total accum. 2023
	2022	2023	Diff. 23-22	%			
Goods indicators by type of packaging (t)	69.145.480	62.461.149	-6.684.331	-9,7%	-9,1%	-10,5%	100%
Liquid bulk	15.583.180	12.918.904	-2.664.276	-17,1%	-14,1%	-13,9%	20,7%
Hydrocarbons	12.053.879	9.425.924	-2.627.955	-21,8%	-18,4%	-18,3%	15,1%
Natural gas	3.845.096	3.069.161	-775.935	-20,2%	-14,9%	-15,7%	4,9%
Petrol	3.586.023	2.756.924	-829.099	-23,1%	-18,2%	-17,3%	4,4%
Diesel oils	2.580.394	2.174.506	-405.888	-15,7%	-13,0%	-11,0%	3,5%
Fuel oil	1.653.483	1.180.222	-473.261	-28,6%	-29,4%	-28,4%	1,9%
Other petroleum products	365.878	222.561	-143.317	-39,2%	-40,1%	-50,2%	0,4%
Remainder	23.005	22.551	-454	-2,0%	5,2%	-3,8%	0,0%
Other liquid bulk	3.529.301	3.492.980	-36.321	-1,0%	0,4%	0,4%	5,6%
Biofuel	1.568.316	1.384.522	-183.794	-11,7%	-12,2%	-12,4%	2,2%
Chemical products	1.015.782	1.153.810	138.028	13,6%	20,3%	24,6%	1,8%
Oils and fats	836.593	867.992	31.399	3,8%	6,4%	2,4%	1,4%
Natural/artificial fertilizer	45.177	45.089	-88	-0,2%	-0,2%	-0,2%	0,1%
Other cargo by type	31.855	23.578	-8.276	-26,0%	-62,1%	-76,9%	0,0%
Remainder	31.578	17.989	-13.589	-43,0%	-54,7%	-54,7%	0,0%
Dry bulk	4.539.860	4.795.301	255.440	5,6%	8,7%	7,7%	7,7%
Special installation	4.077.051	4.481.666	404.615	9,9%	13,5%	11,9%	7,2%
Soya bean	1.345.430	1.521.518	176.088	13,1%	10,0%	5,5%	2,4%
Cement and clinker	861.074	945.088	84.014	9,8%	22,0%	34,7%	1,5%
Cereals and flours	668.656	944.892	276.237	41,3%	55,9%	38,2%	1,5%
Common salt	551.702	546.599	-5.103	-0,9%	1,4%	6,7%	0,9%
Potashes	609.513	500.090	-109.423	-18,0%	-18,3%	-19,9%	0,8%
Remainder	40.677	23.479	-17.199	-42,3%	-50,4%	-46,0%	0,0%
Without special installation	462.809	313.634	-149.174	-32,2%	-33,0%	-30,4%	0,5%
Scrap iron	240.290	196.179	-44.112	-18,4%	-17,3%	-21,2%	0,3%
Other non-metallic minerals	80.484	61.191	-19.293	-24,0%	-34,0%	-30,8%	0,1%
Chemical products	29.190	21.700	-7.490	-25,7%	-13,0%	-30,7%	0,0%
Other minerals and metallic waste	18.770	16.416	-2.354	-12,5%	22,8%	22,8%	0,0%
Common salt	18.209	11.917	-6.292	-34,6%	-44,6%	-44,6%	0,0%
Remainder	75.866	6.232	-69.634	-91,8%	-91,8%	-99,9%	0,0%
General cargo	49.022.441	44.746.945	-4.275.495	-8,7%	-9,2%	-11,1%	71,6%
Containerized	37.626.005	33.524.583	-4.101.423	-10,9%	-11,8%	-14,1%	53,7%
Tare of containers	7.222.334	6.706.119	-516.215	-7,1%	-7,7%	-10,0%	10,7%
Chemical products	5.417.857	4.870.950	-546.907	-10,1%	-10,7%	-12,1%	7,8%
Other food products	3.673.406	3.813.735	140.329	3,8%	3,2%	-3,3%	6,1%
Other cargo by type	4.383.600	3.620.519	-763.081	-17,4%	-18,7%	-21,0%	5,8%
Paper and pulp	2.301.475	2.526.921	225.446	9,8%	9,5%	8,1%	4,0%
Remainder	14.627.333	11.986.338	-2.640.995	-18,1%	-19,1%	-20,8%	19,2%
Non-containerized	11.396.435	11.222.363	-174.072	-1,5%	-0,9%	-0,9%	18,0%
Tare of platform and wagons (Ro-Ro)	4.422.126	4.286.164	-135.962	-3,1%	-2,9%	-3,0%	6,9%
Other cargo by type	1.874.039	1.805.594	-68.445	-3,7%	-3,5%	-3,7%	2,9%
Automobiles and parts	1.003.034	1.304.512	301.477	30,1%	38,2%	43,5%	2,1%
Machinery and spare parts	1.115.080	1.126.618	11.538	1,0%	1,4%	2,1%	1,8%
Frozen fish	598.345	546.429	-51.916	-8,7%	-8,7%	-8,7%	0,9%
Remainder	2.383.811	2.153.046	-230.765	-9,7%	-9,5%	-10,8%	3,4%

TRAFFIC INDICATORS

Breakdown of traffic in transit (tonnes)	Monthly accumulated				% 23-22 accum. November	% 23-22 accum. October	% of total accum. 2023
	2022	2023	Diff. 23-22	%			
Goods indicators by type of packaging (t)	25.613.248	20.550.789	-5.062.459	-19,8%	-20,3%	-22,4%	100%
Liquid bulk	6.257.113	4.225.542	-2.031.570	-32,5%	-29,8%	-30,3%	20,6%
Hydrocarbons	4.764.687	2.793.559	-1.971.128	-41,4%	-39,0%	-40,6%	13,6%
Petrol	2.688.975	1.223.554	-1.465.421	-54,5%	-49,6%	-50,0%	6,0%
Fuel oil	1.073.343	831.483	-241.859	-22,5%	-26,9%	-27,6%	4,0%
Diesel oils	845.509	663.272	-182.236	-21,6%	-20,5%	-22,3%	3,2%
Other petroleum products	156.861	75.249	-81.611	-52,0%	-52,0%	-74,6%	0,4%
Remainder	0	0	0				0,0%
Other liquid bulk	1.492.426	1.431.984	-60.442	-4,0%	0,5%	2,4%	7,0%
Biofuel	1.169.957	875.095	-294.862	-25,2%	-25,3%	-25,4%	4,3%
Chemical products	262.258	524.721	262.463	100,1%	195,3%	206,4%	2,6%
Oils and fats	23.285	19.087	-4.198	-18,0%	-9,6%	5,2%	0,1%
Other cargo by type	28.339	13.080	-15.258	-53,8%	-76,9%	-88,3%	0,1%
Wines, beverages, spirits and derivatives	8.587	0	-8.587				0,0%
Remainder	0	0	0				0,0%
Dry bulk	6.300	34.822	28.522	452,7%	452,7%	251,2%	0,2%
Special installation	6.300	34.822	28.522	452,7%	452,7%	251,2%	0,2%
Cereals and flours	6.300	25.397	19.097	303,1%	303,1%	101,6%	0,1%
Potashes	0	9.425	9.425				0,0%
Remainder	0	0	0				0,0%
Without special installation	0	0	0				0,0%
Remainder	0	0	0				0,0%
General cargo	19.349.835	16.290.425	-3.059.410	-15,8%	-17,6%	-20,2%	79,3%
Containerized	18.857.896	15.847.134	-3.010.762	-16,0%	-17,7%	-20,4%	77,1%
Tare of containers	3.202.791	2.722.264	-480.527	-15,0%	-16,6%	-19,3%	13,2%
Other food products	2.145.269	2.513.942	368.673	17,2%	15,5%	5,3%	12,2%
Chemical products	2.297.004	1.793.786	-503.219	-21,9%	-22,3%	-22,8%	8,7%
Other cargo by type	2.205.459	1.615.815	-589.644	-26,7%	-29,4%	-31,9%	7,9%
Paper and pulp	918.448	1.020.994	102.546	11,2%	8,4%	7,9%	5,0%
Remainder	8.088.924	6.180.333	-1.908.592	-23,6%	-25,4%	-27,0%	30,1%
Non-containerized	491.939	443.291	-48.648	-9,9%	-11,5%	-10,1%	2,2%
Automobiles and parts	143.049	180.240	37.191	26,0%	30,5%	39,4%	0,9%
Machinery and spare parts	71.861	66.952	-4.909	-6,8%	-7,4%	-0,7%	0,3%
Tare of platform and wagons (Ro-Ro)	86.217	61.248	-24.969	-29,0%	-32,0%	-32,6%	0,3%
Other cargo by type	72.406	58.082	-14.324	-19,8%	-20,0%	-17,9%	0,3%
Wines, beverages, spirits and derivatives	5.070	29.073	24.003	473,4%	567,3%	537,0%	0,1%
Remainder	113.336	47.695	-65.641	-57,9%	-62,9%	-66,3%	0,2%

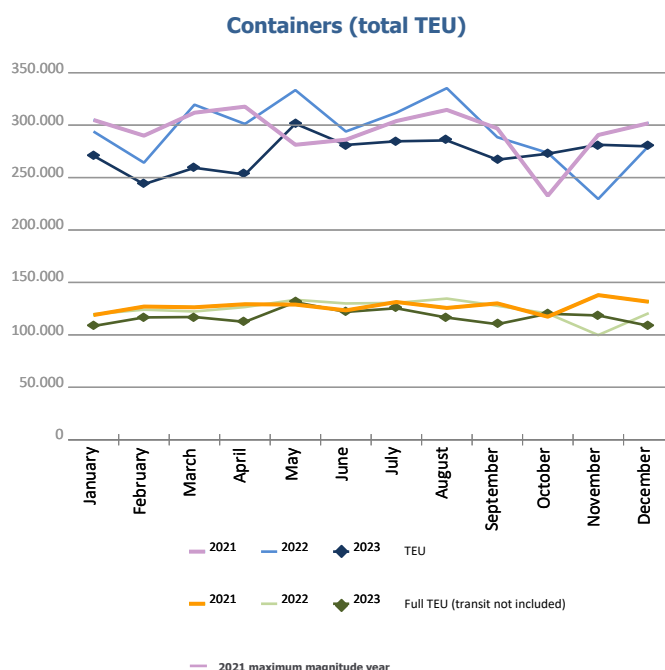
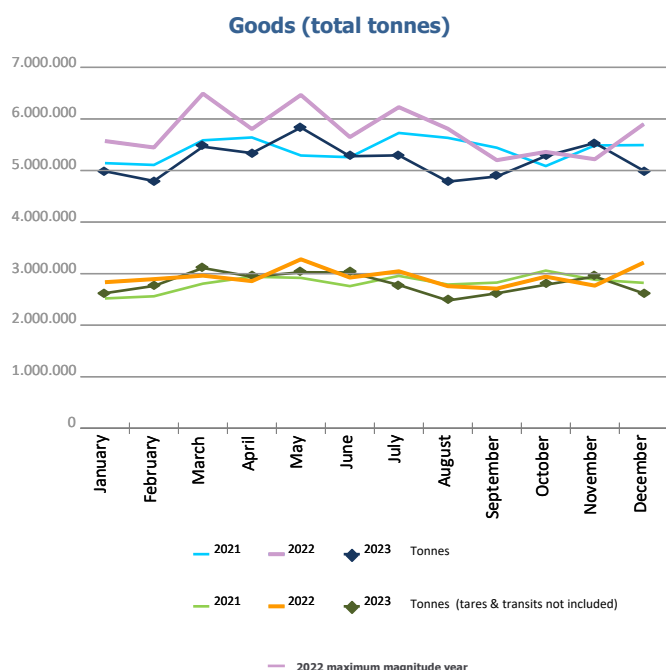
TRAFFIC INDICATORS

Monthly evolution of traffic. Tonnes

Monthly evolution of traffic	Total tonnes			%		Tonnes (tares & transits not included)			%	
	2022	2023	Diff. 23-22	Monthly	Accumulated	2022	2023	Diff. 23-22	Monthly	Accumulated
January	5.571.593	4.985.398	-586.195	-10,5%	-10,5%	2.833.810	2.620.828	-212.982	-7,5%	-7,5%
February	5.446.375	4.796.078	-650.297	-11,9%	-11,2%	2.893.004	2.761.052	-131.952	-4,6%	-6,0%
March	6.491.356	5.461.877	-1.029.479	-15,9%	-12,9%	2.960.820	3.108.533	147.712	5,0%	-2,3%
April	5.804.177	5.337.107	-467.070	-8,0%	-11,7%	2.854.316	2.939.442	85.126	3,0%	-1,0%
May	6.465.450	5.833.594	-631.856	-9,8%	-11,3%	3.278.034	3.026.489	-251.545	-7,7%	-2,5%
June	5.648.116	5.276.905	-371.211	-6,6%	-10,5%	2.923.660	3.022.901	99.240	3,4%	-1,5%
July	6.228.832	5.293.919	-934.913	-15,0%	-11,2%	3.045.360	2.780.082	-265.278	-8,7%	-2,5%
August	5.810.086	4.784.158	-1.025.929	-17,7%	-12,0%	2.756.439	2.479.307	-277.132	-10,1%	-3,4%
September	5.200.319	4.884.453	-315.866	-6,1%	-11,4%	2.708.810	2.618.890	-89.921	-3,3%	-3,4%
October	5.359.901	5.280.040	-79.862	-1,5%	-10,5%	2.940.906	2.783.824	-157.082	-5,3%	-3,6%
November	5.218.720	5.533.046	314.327	6,0%	-9,1%	2.766.970	2.943.711	176.741	6,4%	-2,7%
December	5.900.556	4.994.576	-905.980	-15,4%	-9,7%	3.214.652	2.616.535	-598.116	-18,6%	-4,2%
Total	69.145.480	62.461.149				35.176.781	33.701.593			

Monthly evolution of traffic. TEU

Monthly evolution of traffic	Total TEU			%		Full TEU (transit not included)			%	
	2022	2023	Diff. 23-22	Monthly	Accumulated	2022	2023	Diff. 23-22	Monthly	Accumulated
January	293.936	270.814	-23.122	-7,9%	-7,9%	119.697	108.430	-11.268	-9,4%	-9,4%
February	264.194	243.685	-20.509	-7,8%	-7,8%	124.031	116.640	-7.391	-6,0%	-7,7%
March	319.486	259.313	-60.173	-18,8%	-11,8%	122.283	117.007	-5.276	-4,3%	-6,5%
April	301.120	252.903	-48.217	-16,0%	-12,9%	126.513	112.395	-14.117	-11,2%	-7,7%
May	333.402	301.353	-32.049	-9,6%	-12,2%	133.419	131.139	-2.280	-1,7%	-6,4%
June	293.952	281.137	-12.815	-4,4%	-10,9%	129.933	121.905	-8.029	-6,2%	-6,4%
July	311.806	284.596	-27.210	-8,7%	-10,6%	130.457	125.356	-5.101	-3,9%	-6,0%
August	335.264	285.429	-49.835	-14,9%	-11,2%	134.615	116.475	-18.140	-13,5%	-7,0%
September	288.515	267.061	-21.453	-7,4%	-10,8%	127.747	110.162	-17.585	-13,8%	-7,8%
October	273.587	272.713	-875	-0,3%	-9,8%	120.390	120.157	-233	-0,2%	-7,0%
November	229.583	281.278	51.696	22,5%	-7,5%	99.791	118.501	18.710	18,7%	-5,2%
December	280.201	279.754	-448	-0,2%	-7,0%	120.698	108.652	-12.046	-10,0%	-5,6%
Total	3.525.043	3.280.035				1.489.572	1.406.817			



CONTAINER TRAFFIC

TEU evolution

Full-unloaded foreign	Full TEU			%		Full-loaded foreign	Full TEU			%	
	2022	2023	Diff. 23-22	Monthly	Accumulated		2022	2023	Diff. 23-22	Monthly	Accumulated
January	48.476	49.138	662	1,4%	1,4%	January	64.009	51.046	-12.963	-20,3%	-20,3%
February	54.390	51.449	-2.941	-5,4%	-2,2%	February	61.530	56.052	-5.478	-8,9%	-14,7%
March	53.334	44.515	-8.819	-16,5%	-7,1%	March	61.139	60.777	-362	-0,6%	-10,1%
April	59.085	51.432	-7.653	-13,0%	-8,7%	April	58.086	51.390	-6.696	-11,5%	-10,4%
May	55.511	64.093	8.582	15,5%	-3,8%	May	70.010	56.514	-13.496	-19,3%	-12,4%
June	58.300	53.940	-4.361	-7,5%	-4,4%	June	63.144	57.195	-5.949	-9,4%	-11,9%
July	53.493	59.685	6.192	11,6%	-2,2%	July	67.435	54.831	-12.605	-18,7%	-12,9%
August	59.663	56.638	-3.025	-5,1%	-2,6%	August	66.589	50.134	-16.455	-24,7%	-14,5%
September	56.698	48.419	-8.279	-14,6%	-3,9%	September	61.784	50.741	-11.043	-17,9%	-14,8%
October	47.022	52.489	5.468	11,6%	-2,6%	October	64.583	57.843	-6.740	-10,4%	-14,4%
November	36.823	48.775	11.952	32,5%	-0,4%	November	54.099	59.650	5.551	10,3%	-12,5%
December	49.571	43.033	-6.539	-13,2%	-1,4%	December	62.276	55.662	-6.614	-10,6%	-12,3%
Total	632.363	623.602				Total	754.681	661.832			

Full-unloaded domestic	Full TEU			%		Full-loaded domestic	Full TEU			%	
	2022	2023	Diff. 23-22	Monthly	Accumulated		2022	2023	Diff. 23-22	Monthly	Accumulated
January	1.733	1.702	-32	-1,8%	-1,8%	January	5.480	6.545	1.065	19,4%	19,4%
February	1.764	1.836	72	4,1%	1,2%	February	6.348	7.304	956	15,1%	17,1%
March	1.699	2.227	529	31,1%	10,9%	March	6.112	9.488	3.377	55,3%	30,1%
April	1.593	1.818	225	14,1%	11,7%	April	7.750	7.756	6	0,1%	21,0%
May	1.382	2.223	841	60,8%	20,0%	May	6.516	8.310	1.795	27,5%	22,4%
June	1.627	1.938	311	19,1%	19,9%	June	6.863	8.833	1.971	28,7%	23,5%
July	1.523	1.881	358	23,5%	20,3%	July	8.006	8.960	954	11,9%	21,5%
August	1.642	1.989	348	21,2%	20,4%	August	6.722	7.715	993	14,8%	20,7%
September	1.890	2.163	273	14,4%	19,7%	September	7.376	8.839	1.463	19,8%	20,6%
October	1.507	2.164	657	43,6%	21,9%	October	7.279	7.662	383	5,3%	18,9%
November	1.772	1.913	141	8,0%	20,5%	November	7.097	8.164	1.067	15,0%	18,6%
December	1.773	1.886	113	6,3%	19,3%	December	7.078	8.072	994	14,0%	18,2%
Total	19.903	23.737				Total	82.625	97.646			

Full - Transit	Full TEU			%		Empty	Empty TEU			%	
	2022	2023	Diff. 23-22	Monthly	Accumulated		2022	2023	Diff. 23-22	Monthly	Accumulated
January	105.236	97.136	-8.100	-7,7%	-7,7%	January	69.003	65.249	-3.754	-5,4%	-5,4%
February	89.159	71.919	-17.240	-19,3%	-13,0%	February	51.004	55.126	4.123	8,1%	0,3%
March	136.336	83.590	-52.746	-38,7%	-23,6%	March	60.868	58.717	-2.151	-3,5%	-1,0%
April	129.299	83.957	-45.342	-35,1%	-26,8%	April	45.309	56.551	11.243	24,8%	4,2%
May	136.713	97.479	-39.234	-28,7%	-27,3%	May	63.271	72.735	9.465	15,0%	6,5%
June	108.465	84.535	-23.930	-22,1%	-26,5%	June	55.554	74.698	19.144	34,5%	11,0%
July	124.035	93.106	-30.929	-24,9%	-26,2%	July	57.315	66.135	8.820	15,4%	11,7%
August	131.163	83.798	-47.365	-36,1%	-27,6%	August	69.487	85.156	15.670	22,6%	13,3%
September	100.326	86.281	-14.045	-14,0%	-26,3%	September	60.442	70.619	10.177	16,8%	13,7%
October	93.355	90.688	-2.667	-2,9%	-24,4%	October	59.843	61.868	2.025	3,4%	12,6%
November	79.302	86.565	7.263	9,2%	-22,2%	November	50.490	76.212	25.723	50,9%	15,6%
December	86.856	90.648	3.792	4,4%	-20,5%	December	72.648	80.455	7.807	10,7%	15,1%
Total	1.320.241	1.049.699				Total	715.230	823.520			

CONTAINER TRAFFIC

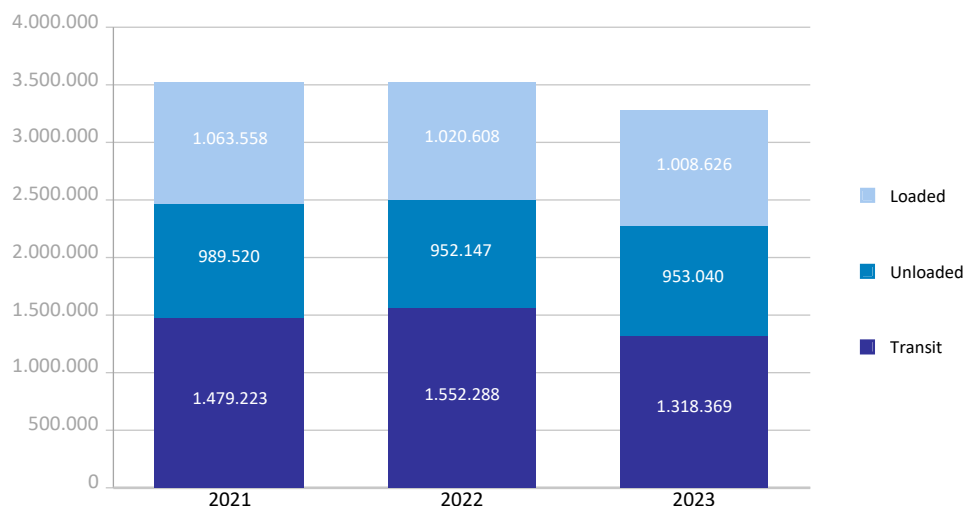
TEU

Container traffic	Monthly accumulated 2022			Monthly accumulated 2023			%
	Domestic	Foreign	Total	Domestic	Foreign	Total	
Total traffic	194.680	3.330.363	3.525.043	223.512	3.056.523	3.280.035	-7,0%
Unloaded	98.885	1.659.617	1.758.502	116.510	1.530.792	1.647.302	-6,3%
Roll On-Roll Off	26.068	14.848	40.916	26.490	14.856	41.346	1,1%
Lift On-Lift Off	72.818	1.644.769	1.717.587	90.021	1.515.936	1.605.957	-6,5%
Loaded	95.795	1.670.746	1.766.541	107.002	1.525.731	1.632.733	-7,6%
Roll On-Roll Off	26.481	15.352	41.833	28.730	15.000	43.730	4,5%
Lift On-Lift Off	69.315	1.655.394	1.724.709	78.272	1.510.731	1.589.003	-7,9%

Breakdown by navigation and operation	Monthly accumulated 2022			Monthly accumulated 2023			%
	Domestic	Foreign	Total	Domestic	Foreign	Total	
Loaded	95.638	924.971	1.020.608	106.791	901.835	1.008.626	-1,2%
Full	82.625	754.681	837.305	97.646	661.832	759.478	-9,3%
Empty	13.013	170.290	183.303	9.145	240.004	249.149	35,9%
Unloaded	97.084	855.063	952.147	113.015	840.025	953.040	0,1%
Full	19.903	632.363	652.266	23.737	623.602	647.339	-0,8%
Empty	77.181	222.700	299.881	89.278	216.423	305.701	1,9%
Transit	1.958	1.550.330	1.552.288	3.706	1.314.663	1.318.369	-15,1%
Full	96	1.320.145	1.320.241	40	1.049.659	1.049.699	-20,5%
Empty	1.862	230.185	232.047	3.666	265.004	268.670	15,8%

Total traffic	194.680	3.330.363	3.525.043	223.512	3.056.523	3.280.035	-7,0%
Full	102.624	2.707.189	2.809.813	121.423	2.335.093	2.456.516	-12,6%
Empty	92.056	623.174	715.230	102.089	721.431	823.520	15,1%
% Empty	47,3%	18,7%	20,3%	45,7%	23,6%	25,1%	
% Transit	1,0%	46,6%	44,0%	1,7%	43,0%	40,2%	

General cargo distribution by operation (TEU)

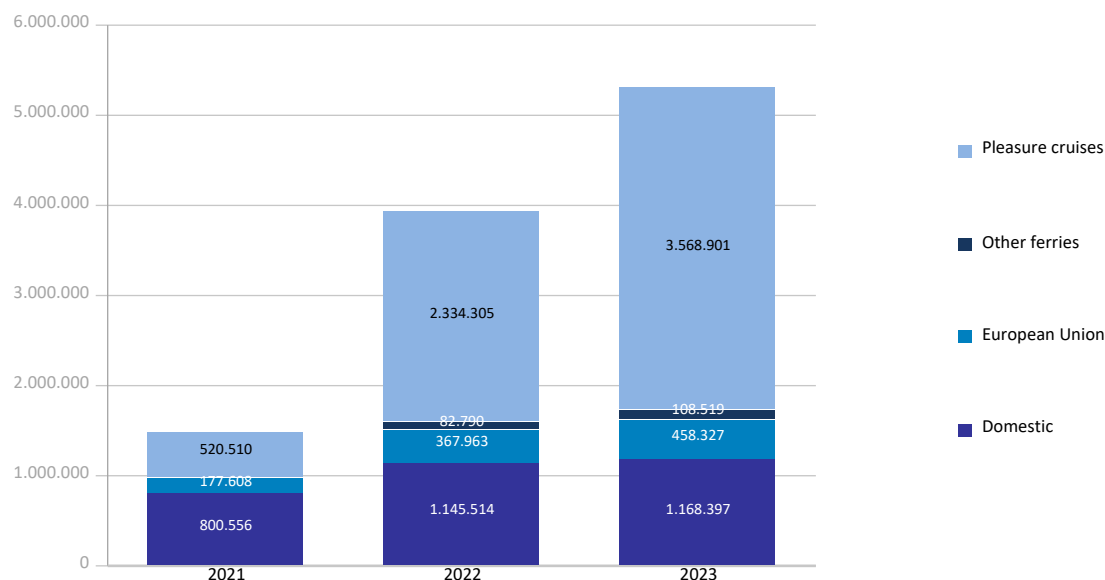


PASSENGER TRAFFIC

Total passenger traffic (units)	Monthly accumulated				% 23-22 accum. November	% 23-22 accum. October
	2022	2023	Diff. 23-22	%		
Total passengers	3.930.572	5.304.144	1.373.572	34,9%	36,3%	35,3%
Embarkation	1.475.226	1.842.004	366.778	24,9%	25,7%	23,7%
Disembarkation	1.426.545	1.800.096	373.551	26,2%	26,9%	25,6%
Transit	1.028.801	1.662.044	633.243	61,6%	65,0%	68,0%
Regular line ferries	1.596.267	1.735.243	138.976	8,7%	9,1%	9,2%
Embarkation	817.845	882.219	64.374	7,9%	8,3%	8,2%
Disembarkation	778.422	853.024	74.602	9,6%	10,0%	10,3%
Domestic	1.145.514	1.168.397	22.883	2,0%	1,7%	1,3%
Embarkation	589.568	600.211	10.643	1,8%	1,5%	1,2%
Disembarkation	555.946	568.186	12.240	2,2%	1,9%	1,4%
European Union	367.963	458.327	90.364	24,6%	25,8%	26,4%
Embarkation	183.271	226.796	43.525	23,7%	24,7%	24,9%
Disembarkation	184.692	231.531	46.839	25,4%	26,8%	27,9%
Other ferries	82.790	108.519	25.729	31,1%	38,9%	45,1%
Embarkation	45.006	55.212	10.206	22,7%	31,2%	35,6%
Disembarkation	37.784	53.307	15.523	41,1%	47,6%	56,1%
Pleasure cruises	2.334.305	3.568.901	1.234.596	52,9%	54,6%	53,7%
Embarkation	657.381	959.785	302.404	46,0%	47,0%	43,0%
Disembarkation	648.123	947.072	298.949	46,1%	46,6%	43,8%
Transit	1.028.801	1.662.044	633.243	61,6%	65,0%	68,0%

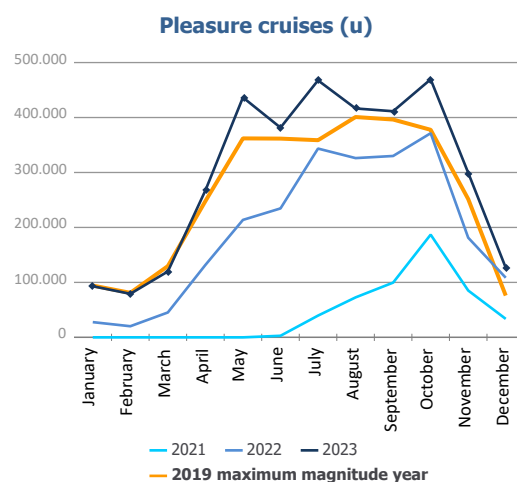
Total passenger calls (units)	Monthly accumulated				% 23-22 accum. November	% 23-22 accum. October
	2022	2023	Diff. 23-22	%		
Total number of calls	4.044	4.077	33	0,8%	1,3%	1,7%
Regular Line ferries	3.238	3.274	36	1,1%	1,6%	2,3%
Pleasure cruises	806	803	-3	-0,4%	-0,1%	-0,9%

Passenger traffic distribution (u)

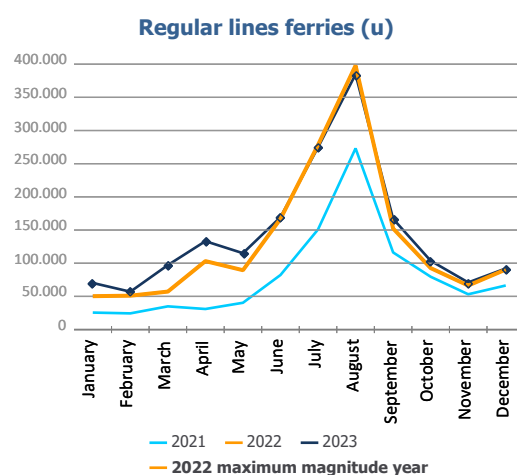


PASSENGER CLASSIFICATION

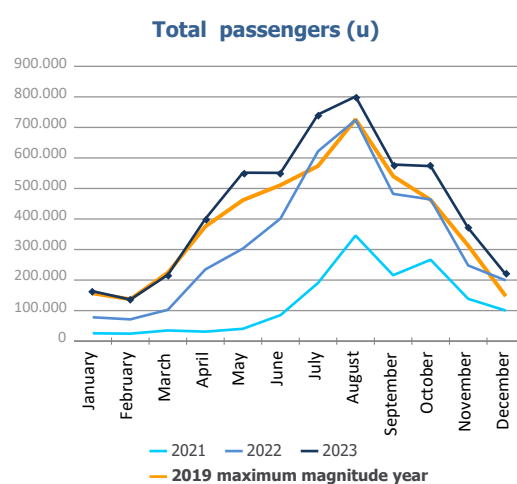
Monthly evolution of passenger traffic	Pleasure cruises			%	
	2022	2023	Diff. 23-22	Monthly	Accumulated
January	27.707	93.013	65.306	235,7%	235,7%
February	20.234	79.194	58.960	291,4%	259,2%
March	45.304	119.885	74.581	164,6%	213,3%
April	131.770	267.420	135.650	102,9%	148,7%
May	213.711	436.569	222.858	104,3%	127,0%
June	234.617	381.587	146.970	62,6%	104,6%
July	343.517	467.607	124.090	36,1%	81,5%
August	326.187	416.517	90.330	27,7%	68,4%
September	330.034	411.457	81.423	24,7%	59,8%
October	371.412	469.508	98.096	26,4%	53,7%
November	181.318	299.424	118.106	65,1%	54,6%
December	108.494	126.720	18.226	16,8%	52,9%
Total	2.334.305	3.568.901			



Monthly evolution of passenger traffic	Regular lines ferries			%	
	2022	2023	Diff. 23-22	Monthly	Accumulated
January	50.352	70.262	19.910	39,5%	39,5%
February	51.078	57.059	5.981	11,7%	25,5%
March	57.261	97.166	39.905	69,7%	41,5%
April	103.159	133.201	30.042	29,1%	36,6%
May	89.473	115.112	25.639	28,7%	34,6%
June	166.930	169.419	2.489	1,5%	23,9%
July	278.213	274.653	-3.560	-1,3%	15,1%
August	397.960	384.652	-13.308	-3,3%	9,0%
September	152.317	166.887	14.570	9,6%	9,0%
October	92.657	103.714	11.057	11,9%	9,2%
November	66.384	71.033	4.649	7,0%	9,1%
December	90.483	92.085	1.602	1,8%	8,7%
Total	1.596.267	1.735.243			



Monthly evolution of passenger traffic	Total passengers			%	
	2022	2023	Diff. 23-22	Monthly	Accumulated
January	78.059	163.275	85.216	109,2%	109,2%
February	71.312	136.253	64.941	91,1%	100,5%
March	102.565	217.051	114.486	111,6%	105,0%
April	234.929	400.621	165.692	70,5%	88,4%
May	303.184	551.681	248.497	82,0%	85,9%
June	401.547	551.006	149.459	37,2%	69,5%
July	621.730	742.260	120.530	19,4%	52,3%
August	724.147	801.169	77.022	10,6%	40,4%
September	482.351	578.344	95.993	19,9%	37,1%
October	464.069	573.222	109.153	23,5%	35,3%
November	247.702	370.457	122.755	49,6%	36,3%
December	198.977	218.805	19.828	10,0%	34,9%
Total	3.930.572	5.304.144			

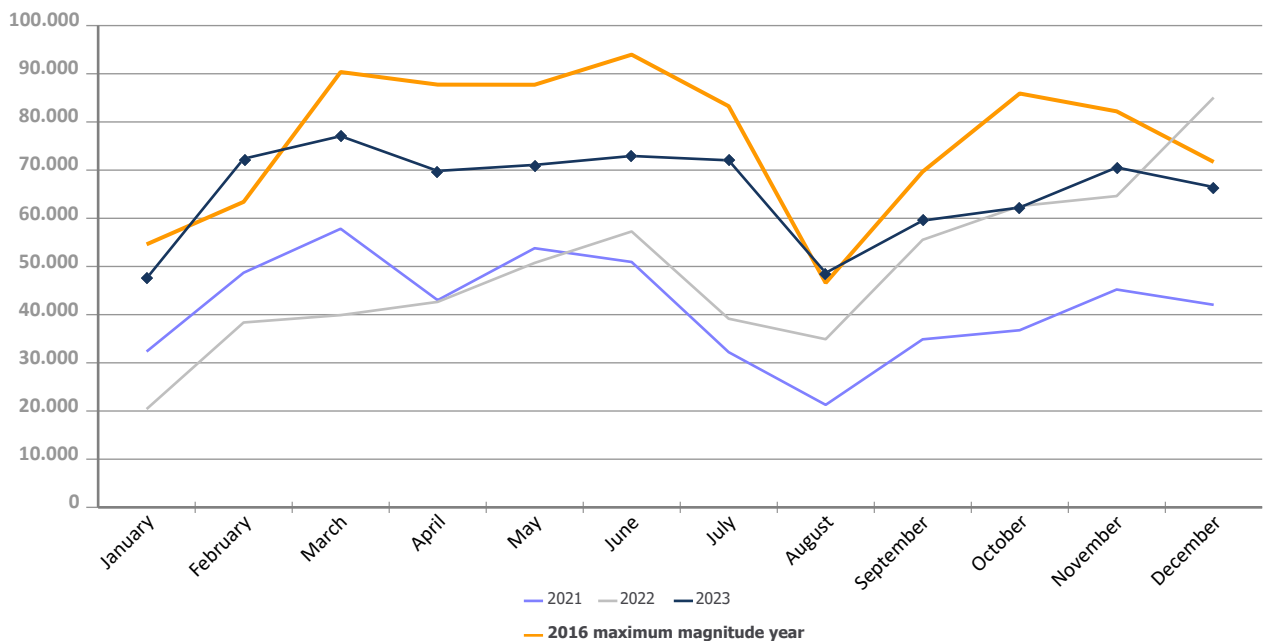


AUTOMOBILE TRAFFIC

Total automobile traffic (units)	Monthly accumulated				% 23-22 accum. November	% 23-22 accum. October
	2022	2023	Diff. 23-22	%		
Automobile traffic by navigation and operation	591.158	790.319	199.161	33,7%	43,0%	48,0%
Domestic	87.731	106.555	18.824	21,5%	24,6%	26,9%
Loaded	69.083	86.870	17.787	25,7%	28,1%	28,9%
Unloaded	18.646	19.579	933	5,0%	10,1%	16,2%
Transit	2	106	104	5200,0%	5200,0%	5200,0%
Foreign	503.427	683.764	180.337	35,8%	46,5%	52,0%
Loaded	258.796	325.298	66.502	25,7%	35,1%	37,2%
Unloaded	160.040	246.615	86.575	54,1%	71,3%	80,3%
Transit	84.591	111.851	27.260	32,2%	36,8%	47,8%

Monthly automobile traffic (u)	Monthly		Accumulated		%	
	2022	2023	2022	2023	Monthly	Accumulated
January	20.402	47.534	20.402	47.534	133,0%	133,0%
February	38.375	72.364	58.777	119.898	88,6%	104,0%
March	39.904	77.057	98.681	196.955	93,1%	99,6%
April	42.653	69.834	141.334	266.789	63,7%	88,8%
May	50.736	71.083	192.070	337.872	40,1%	75,9%
June	57.266	72.935	249.336	410.807	27,4%	64,8%
July	39.159	72.037	288.495	482.844	84,0%	67,4%
August	34.906	48.671	323.401	531.515	39,4%	64,4%
September	55.534	59.527	378.935	591.042	7,2%	56,0%
October	62.543	62.243	441.478	653.285	-0,5%	48,0%
November	64.615	70.554	506.093	723.839	9,2%	43,0%
December	85.065	66.480	591.158	790.319	-21,8%	33,7%

Evolution of monthly automobile traffic (u)

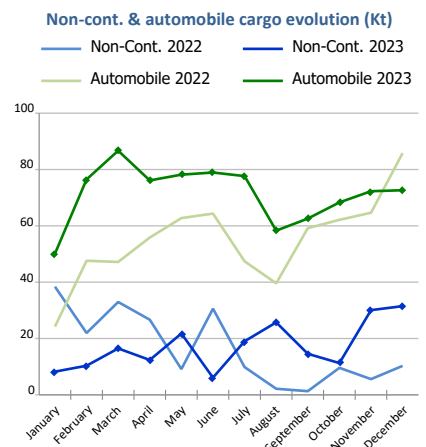
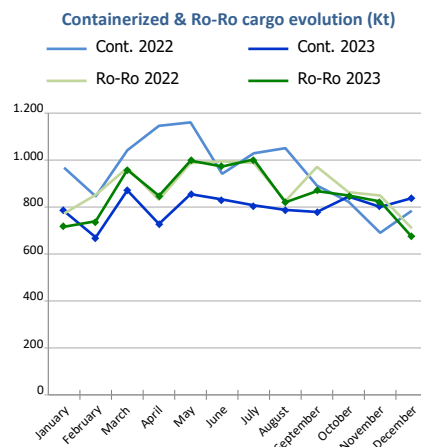
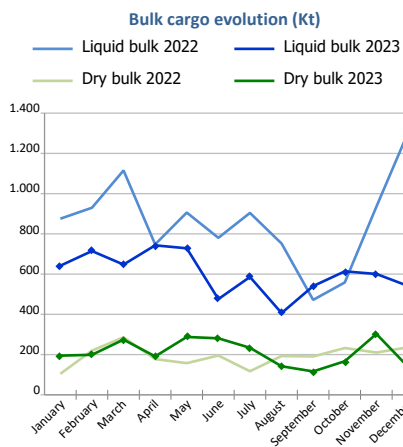
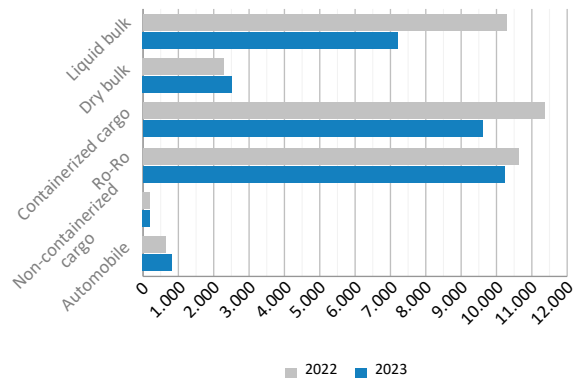


SHORT SEA SHIPPING (SSS)

SSS Goods classification

Goods classification. Tonnes	Monthly accumulated		%	% of total port traffic
	2022	2023		
Liquid bulk	10.278.553	7.238.807	-29,6%	56,0%
Dry bulk	2.319.117	2.528.448	9,0%	52,7%
Containerized cargo	11.372.716	9.598.114	-15,6%	29,2%
Ro-Ro	10.612.434	10.270.482	-3,2%	99,5%
Non-containerized cargo	198.462	207.477	4,5%	54,1%
Automobile	660.784	858.351	29,9%	70,9%
Total	35.442.067	30.701.679	-13,4%	49,2%

SSS goods classification (Kt)



SSS General Cargo	Spanish Islands			SSS Remainder			TOTAL		
	2022	2023	%	2022	2023	%	2022	2023	%
Containerized cargo	762.719	917.337	20,3%	10.609.997	8.680.777	-18,2%	11.372.716	9.598.114	-15,6%
O/D	743.198	893.287	20,2%	3.166.597	3.299.709	4,2%	3.909.795	4.192.996	7,2%
Transit	19.521	24.050	23,2%	7.443.400	5.381.068	-27,7%	7.462.921	5.405.118	-27,6%
Ro-Ro	5.757.150	5.796.282	0,7%	4.855.284	4.474.200	-7,8%	10.612.434	10.270.482	-3,2%
O/D	5.757.131	5.796.282	0,7%	4.497.821	4.213.828	-6,3%	10.254.952	10.010.110	-2,4%
Transit	18	0		357.463	260.372	-27,2%	357.482	260.372	-27,2%
Non-cont. cargo	5.756	3.100	-46,1%	192.707	204.372	6,1%	198.462	207.477	4,5%
O/D	5.738	3.100	-46,0%	186.441	199.897	7,2%	192.179	202.997	5,6%
Transit	18	0	-99,8%	6.266	4.479	-28,5%	6.284	4.479	-28,7%
Automobile	128.416	166.313	29,5%	532.368	692.039	30,0%	660.784	858.351	29,9%
O/D	127.884	165.904	29,7%	444.280	567.906	27,8%	572.164	733.810	28,3%
Transit	532	408	-23,3%	88.088	124.133	40,9%	88.620	124.541	40,5%



Short Sea Shipping (SSS):

The transport of cargo/goods and passengers between ports situated in the European Union or between these ports and non-European ports with a coastline in seas bordering Europe. This applies to cargo either originating from or is destined for these countries (in accordance with the European Shortsea Network).

Motorways of the sea (MoS):

Short Sea Shipping services as an alternative to road transport and which fulfill the following criteria: minimum frequency of 3 calls per week and calling at a maximum of 3 different ports.

General cargo:

Including containerized cargo, non-containerized cargo, Ro-Ro and automobiles.

Containerized cargo:

Excluding container cargo by Ro-Ro.

Non-containerized cargo:

General non-containerized goods other than Ro-Ro and excluding automobiles.

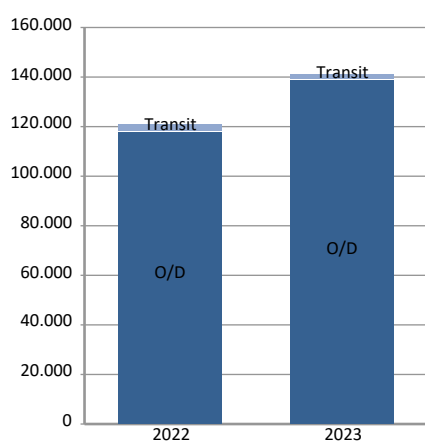
Ro-Ro:

General cargo carried in UTI's. Excluding automobiles.

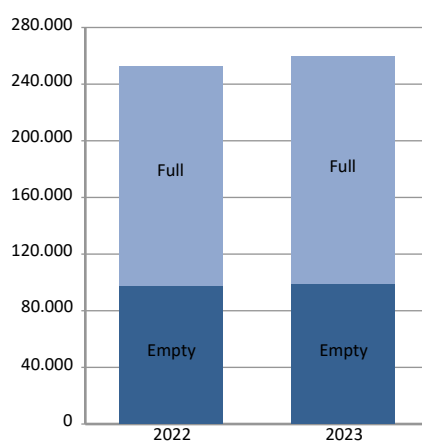
SHORT SEA SHIPPING (SSS)

SSS General cargo	Spanish Islands			SSS Remainder			TOTAL		
	2022	2023	%	2022	2023	%	2022	2023	%
Containerized cargo. TEU	120.685	140.781	16,7%	963.770	831.948	-13,7%	1.084.455	972.729	-10,3%
O/D	117.900	138.322	17,3%	366.857	399.522	8,9%	484.757	537.845	11,0%
Full	71.569	86.223	20,5%	219.543	234.891	7,0%	291.112	321.114	10,3%
Empty	46.331	52.099	12,4%	147.314	164.632	11,8%	193.645	216.731	11,9%
Transit	2.784	2.459	-11,7%	596.914	432.426	-27,6%	599.698	434.885	-27,5%
Full	1.413	2.043	44,6%	545.311	389.702	-28,5%	546.724	391.745	-28,3%
Empty	1.371	416	-69,7%	51.603	42.724	-17,2%	52.974	43.140	-18,6%
Ro-Ro. UTI	253.053	259.134	2,4%	165.546	154.590	-6,6%	418.599	413.724	-1,2%
Full	155.393	160.795	3,5%	152.977	141.097	-7,8%	308.370	301.892	-2,1%
Empty	97.660	98.339	0,7%	12.569	13.493	7,4%	110.229	111.832	1,5%
Automobile units	88.127	105.456	19,7%	368.824	478.826	29,8%	456.951	584.282	27,9%
O/D	87.730	105.159	19,9%	308.002	396.875	28,9%	395.732	502.034	26,9%
Transit	397	297	-25,2%	60.822	81.951	34,7%	61.219	82.248	34,4%

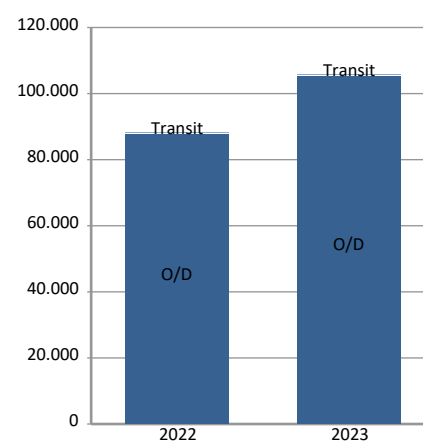
Cont. TEU (Spanish Islands)



Ro-Ro. UTI (Spanish Islands)

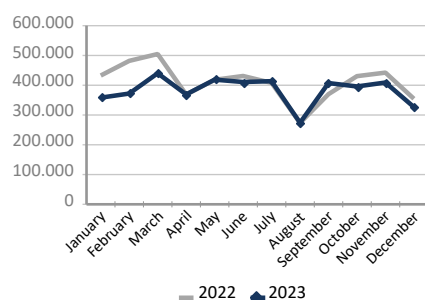


Automobile. Units (Spanish Islands)

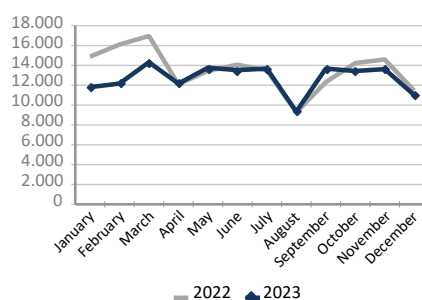


Motorways of the Sea (MoS)	EU			Non-EU			TOTAL		
	2022	2023	%	2022	2023	%	2022	2023	%
Tonnes	4.855.853	4.578.447	-5,7%	60.351	17.292	-71,3%	4.916.204	4.595.739	-6,5%
Loaded	2.587.556	2.448.354	-5,4%	26.946	12.032	-55,3%	2.614.502	2.460.387	-5,9%
Unloaded	2.268.298	2.130.093	-6,1%	33.405	5.260	-84,3%	2.301.703	2.135.353	-7,2%
UTI	159.658	151.684	-5,0%	3.261	836	-74,4%	162.919	152.520	-6,4%
Loaded	82.200	78.312	-4,7%	1.656	590	-64,4%	83.856	78.902	-5,9%
Unloaded	77.458	73.372	-5,3%	1.605	246	-84,7%	79.063	73.618	-6,9%
Automobile units	106.173	125.523	18,2%	1.662	1.476	-11,2%	107.835	126.999	17,8%
Loaded	101.933	117.972	15,7%	177	1.471	731,1%	102.110	119.443	17,0%
Unloaded	4.240	7.551	78,1%	1.485	5	-99,7%	5.725	7.556	32,0%

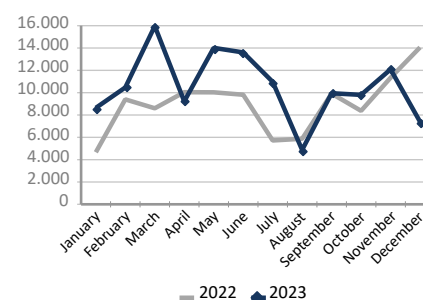
MoS. Tonnes



MoS. UTI



MoS. Automobile units

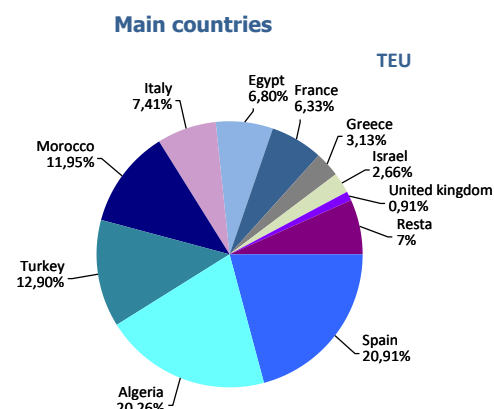


UTI: All those means of unitization, self-propelled or otherwise, that are directly or indirectly used as a means of land transport (e.g. trailers, platforms, trucks, freezer trucks, etc.) are considered as UTI. Containers are not considered to be included, except those that are handled by an equipment transport of the own terminal.

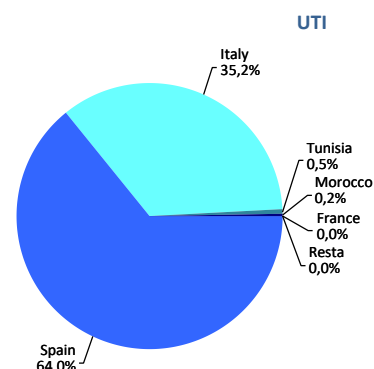
SHORT SEA SHIPPING (SSS)

SSS Ranking countries by mode of packaging

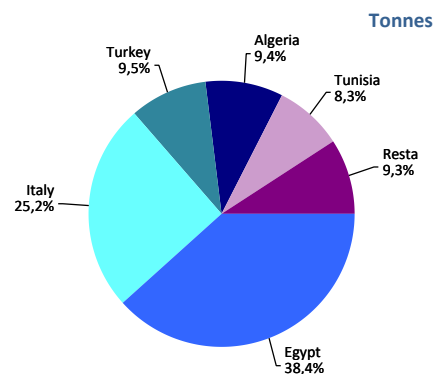
Containerized cargo. TEU	Monthly accumulated				% of total 2023
	2022	2023	Diff. 23-22	%	
Total	1.084.455	972.729	-111.726	-10,3%	100%
Spain	172.575	203.352	30.777	17,8%	20,9%
Algeria	195.709	197.044	1.335	0,7%	20,3%
Turkey	157.741	125.456	-32.285	-20,5%	12,9%
Morocco	91.102	116.193	25.091	27,5%	11,9%
Italy	161.662	72.058	-89.604	-55,4%	7,4%
Egypt	53.130	66.153	13.023	24,5%	6,8%
France	98.066	61.603	-36.463	-37,2%	6,3%
Greece	34.212	30.437	-3.775	-11,0%	3,1%
Israel	21.193	25.838	4.645	21,9%	2,7%
United kingdom	14.117	8.881	-5.237	-37,1%	0,9%
Remainder	84.950	65.717	-19.233	-22,6%	6,8%



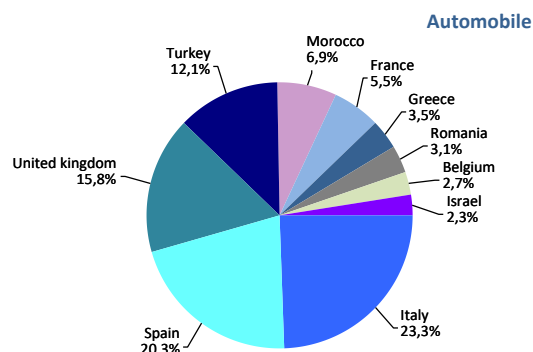
Ro-Ro. UTI	Monthly accumulated				% of total 2023
	2022	2023	Diff. 23-22	%	
Total	418.599	413.724	-4.876	-1,2%	100%
Spain	260.630	264.952	4.322	1,7%	64,0%
Italy	152.072	145.811	-6.261	-4,1%	35,2%
Tunisia	2.409	1.972	-438	-18,2%	0,5%
Morocco	3.467	940	-2.527	-72,9%	0,2%
France	4	34	30	750,0%	0,0%
Remainder	17	15	-2	-11,8%	0,0%



Non-cont. cargo. Tonnes	Monthly accumulated				% of total 2023
	2022	2023	Diff. 23-22	%	
Total	198.462	207.477	9.014	4,5%	100%
Egypt	25.990	79.621	53.631	206,4%	38,4%
Italy	48.461	52.337	3.876	8,0%	25,2%
Turkey	61.478	19.667	-41.811	-68,0%	9,5%
Algeria	5.137	19.410	14.272	277,8%	9,4%
Tunisia	22.659	17.140	-5.519	-24,4%	8,3%
Remainder	34.738	19.302	-15.436	-44,4%	9,3%



Automobile. Units	Monthly accumulated				% of total 2023
	2022	2023	Diff. 23-22	%	
Total	456.951	584.282	127.331	27,9%	100%
Italy	111.533	136.223	24.690	22,1%	23,3%
Spain	98.417	118.857	20.440	20,8%	20,3%
United kingdom	71.537	92.332	20.795	29,1%	15,8%
Turkey	39.274	70.805	31.531	80,3%	12,1%
Morocco	33.110	40.347	7.237	21,9%	6,9%
France	26.128	32.299	6.171	23,6%	5,5%
Greece	12.229	20.572	8.343	68,2%	3,5%
Romania	17.309	18.348	1.039	6,0%	3,1%
Belgium	5.550	16.031	10.481	188,8%	2,7%
Israel	11.453	13.607	2.154	18,8%	2,3%
Remainder	30.411	24.861	-5.550	-18,2%	4,3%



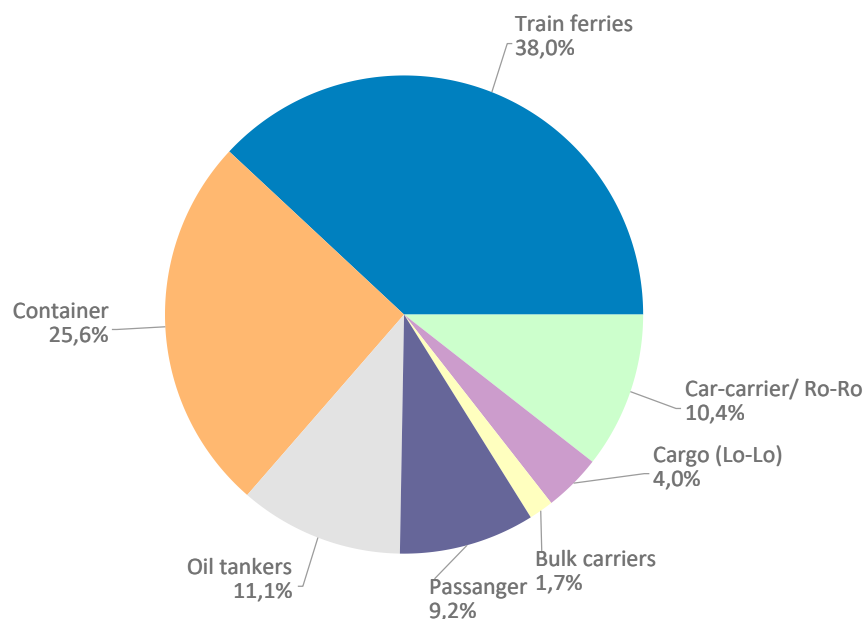
VESSELS TRAFFIC

Vessels traffic	Monthly accumulated		
	2022	2023	%
Number of calls	8.713	8.766	0,6%
Tonnage	350.874.748	374.300.716	6,7%
Average tonnes	40.270	42.699	6,0%

Type of vessels	Monthly accumulated					
	2022		2023		%	
	Calls	GT	Calls	GT	Calls	GT
Total	8.713	350.874.748	8.766	374.300.716	0,6%	6,7%
Car-carrier/ Ro-Ro	932	46.990.823	916	48.410.153	-1,7%	3,0%
Cargo (Lo-Lo)	309	1.802.927	352	2.169.020	13,9%	20,3%
Refrigerators	1	14.868	0	0		
Bulk carriers	154	3.951.545	149	4.249.109	-3,2%	7,5%
Passanger	807	91.177.756	804	99.252.922	-0,4%	8,9%
Oil tankers	1.188	23.037.848	970	19.055.263	-18,4%	-17,3%
Container	2.105	88.234.451	2.241	102.388.498	6,5%	16,0%
Train ferries	3.217	95.664.530	3.334	98.775.751	3,6%	3,3%

Type of vessels (monthly accumulated 2023)	Domestic		Foreign	
	Calls	GT	Calls	GT
Total	3.136	76.763.434	5.630	297.537.282
Car-carrier/ Ro-Ro	58	1.206.249	858	47.203.904
Cargo (Lo-Lo)	29	97.192	323	2.071.828
Refrigerators			0	0
Bulk carriers	8	149.304	141	4.099.805
Passanger	117	8.244.689	687	91.008.233
Oil tankers	63	690.051	907	18.365.212
Container	305	2.764.374	1.936	99.624.124
Train ferries	2.556	63.611.575	778	35.164.176

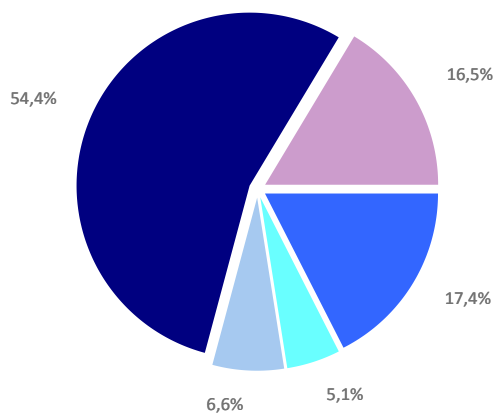
Distribution by type of vessel



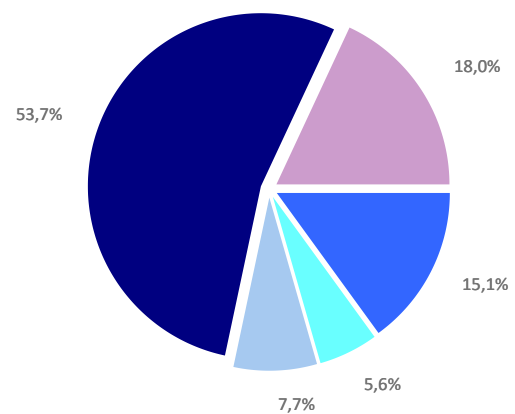
GOODS TRAFFIC

Type of packaging and navigation	Monthly accumulated 2022			Monthly accumulated 2023			%
	Domestic	Foreign	Total	Domestic	Foreign	Total	
Hydrocarbons	1.137.551	10.916.328	12.053.879	745.584	8.680.340	9.425.924	-21,8%
Incoming	1.060.462	8.628.029	9.688.491	579.759	7.309.641	7.889.400	-18,6%
Outgoing	77.089	2.288.299	2.365.388	165.825	1.370.699	1.536.524	-35,0%
Other liquid bulk	249.103	3.280.197	3.529.301	164.433	3.328.547	3.492.980	-1,0%
Incoming	152.032	2.288.989	2.441.021	90.596	2.237.821	2.328.417	-4,6%
Outgoing	97.072	991.208	1.088.280	73.837	1.090.726	1.164.563	7,0%
Dry bulk	188.198	4.351.662	4.539.860	140.595	4.654.706	4.795.301	5,6%
Incoming	98.744	2.265.780	2.364.524	112.147	2.626.974	2.739.122	15,8%
Outgoing	89.454	2.085.882	2.175.336	28.448	2.027.731	2.056.179	-5,5%
Containerized cargo	1.204.214	36.421.792	37.626.005	1.410.253	32.114.329	33.524.583	-10,9%
Incoming	354.530	16.789.105	17.143.635	418.032	15.365.670	15.783.702	-7,9%
Outgoing	849.683	19.632.687	20.482.370	992.221	16.748.659	17.740.880	-13,4%
Non-containerized cargo	5.507.151	5.889.284	11.396.435	5.562.774	5.659.588	11.222.363	-1,5%
Incoming	1.881.011	3.033.580	4.914.591	1.836.917	2.863.831	4.700.748	-4,4%
Outgoing	3.626.140	2.855.705	6.481.844	3.725.858	2.795.757	6.521.615	0,6%
Total general cargo	6.711.365	42.311.076	49.022.441	6.973.028	37.773.917	44.746.945	-8,7%
Incoming	2.235.542	19.822.684	22.058.226	2.254.949	18.229.501	20.484.450	-7,1%
Outgoing	4.475.823	22.488.392	26.964.215	4.718.079	19.544.416	24.262.495	-10,0%
Total throughput (tonnes)	8.286.217	60.859.263	69.145.480	8.023.640	54.437.510	62.461.149	-9,7%
Incoming	3.546.779	33.005.482	36.552.262	3.037.451	30.403.937	33.441.388	-8,5%
Outgoing	4.739.438	27.853.781	32.593.218	4.986.189	24.033.572	29.019.761	-11,0%
Container traffic (TEU)	194.680	3.330.363	3.525.043	223.512	3.056.523	3.280.035	-7,0%
Incoming	98.885	1.659.617	1.758.502	116.510	1.530.792	1.647.302	-6,3%
Outgoing	95.795	1.670.746	1.766.541	107.002	1.525.731	1.632.733	-7,6%

Distribution by type of packaging 2022

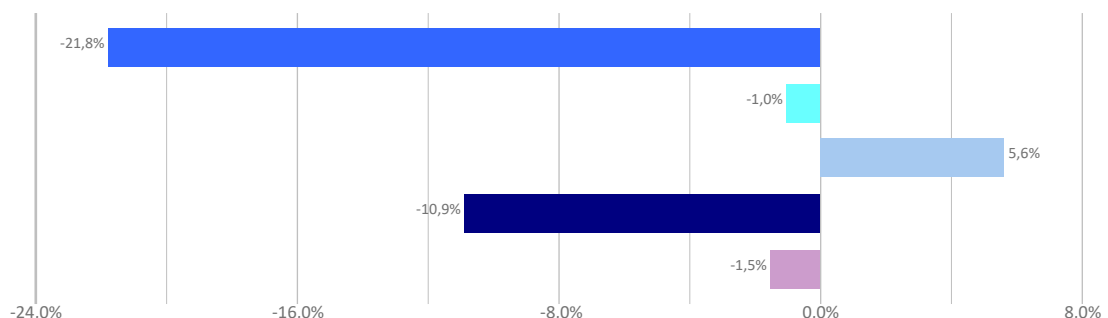


Distribution by type of packaging 2023



■ Hydrocarbons ■ Liquid bulk ■ Dry bulk ■ Containerized cargo ■ Non Containerized cargo

Annual growth by type of packaging



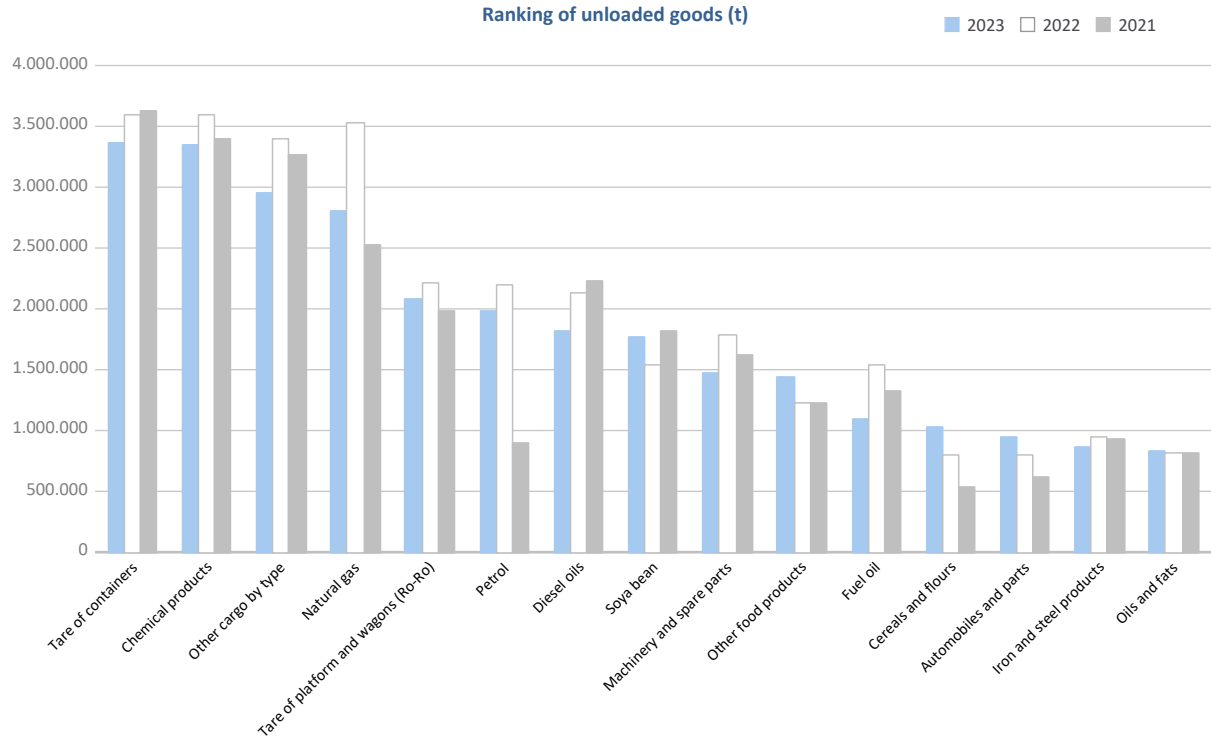
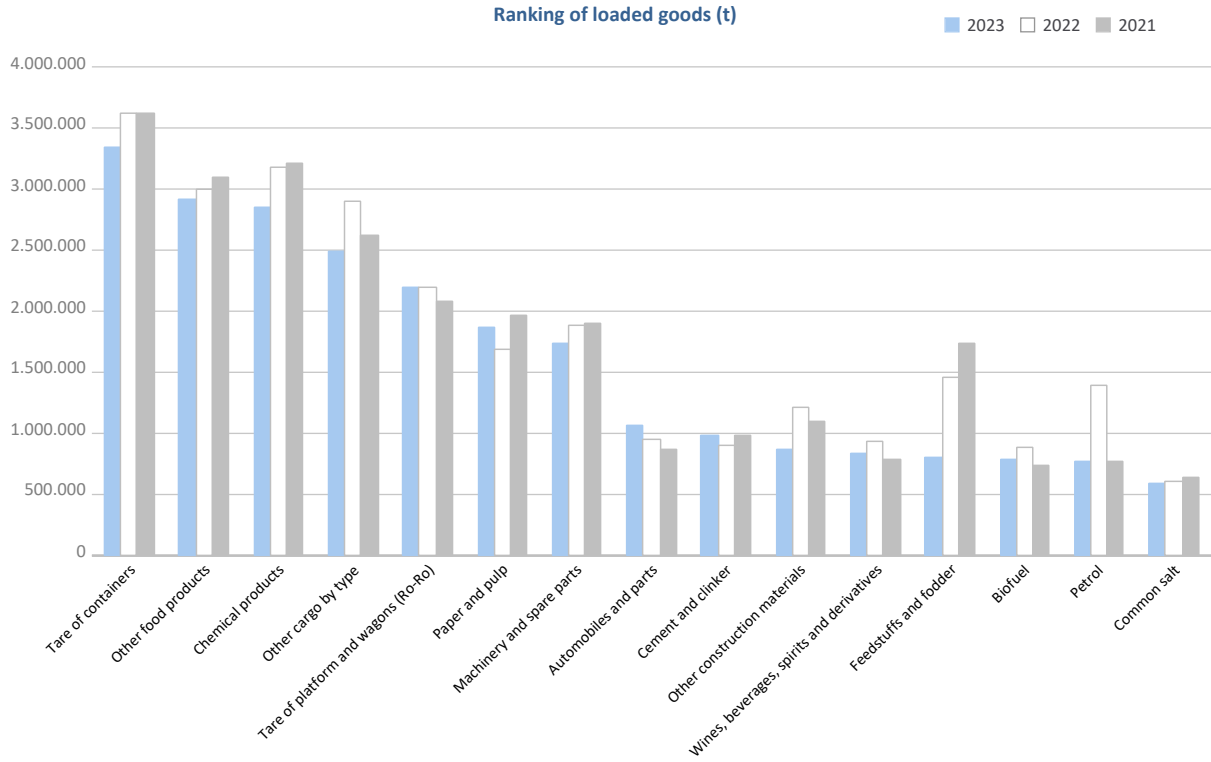
GOODS TRAFFIC

Goods by classification 4.3.7.	Monthly accumulated				% of total accum. 2023
	2022	2023	Diff. 23-22	%	
Tonnes	69.145.480	62.461.149	-6.684.331	-9,7%	100%
Energy	14.098.609	11.193.361	-2.905.248	-20,6%	17,9%
Crude oil	252	34	-217	-86,3%	0,0%
Fuel oil	1.697.619	1.228.527	-469.092	-27,6%	2,0%
Diesel oils	2.580.915	2.177.864	-403.051	-15,6%	3,5%
Petrol	3.586.297	2.756.975	-829.322	-23,1%	4,4%
Other petroleum products	457.220	280.575	-176.645	-38,6%	0,4%
Petroleum fuel gasses	50.741	57.598	6.857	13,5%	0,1%
Coal	122.531	74.297	-48.234	-39,4%	0,1%
Natural gas	3.845.134	3.069.163	-775.971	-20,2%	4,9%
Biofuel	1.757.900	1.548.328	-209.572	-11,9%	2,5%
Iron, steel and metallurgical products	2.984.478	2.780.668	-203.811	-6,8%	4,5%
Iron ore	9.251	4.230	-5.021	-54,3%	0,0%
Other minerals and metallic waste	381.533	399.341	17.808	4,7%	0,6%
Scrap iron	513.058	601.839	88.781	17,3%	1,0%
Iron and steel products	1.466.805	1.293.288	-173.517	-11,8%	2,1%
Other metallurgical products	613.830	481.970	-131.861	-21,5%	0,8%
Non-metallic minerals	1.156.071	1.036.695	-119.376	-10,3%	1,7%
Common salt	654.773	603.243	-51.530	-7,9%	1,0%
Other non-metallic minerals	501.298	433.452	-67.846	-13,5%	0,7%
Fertilizers	881.199	707.231	-173.968	-19,7%	1,1%
Phosphates	755	331	-424	-56,1%	0,0%
Potashes	673.165	503.958	-169.207	-25,1%	0,8%
Natural/artificial fertilizer	207.278	202.941	-4.337	-2,1%	0,3%
Chemicals	6.775.077	6.198.218	-576.858	-8,5%	9,9%
Chemical products	6.775.077	6.198.218	-576.858	-8,5%	9,9%
Construction materials	3.170.668	2.619.560	-551.108	-17,4%	4,2%
Asphalt	5.247	10.477	5.229	99,7%	0,0%
Cement and clinker	996.488	1.022.033	25.545	2,6%	1,6%
Other construction materials	2.168.933	1.587.050	-581.882	-26,8%	2,5%
Agriculture, livestock and food	13.775.887	13.148.173	-627.714	-4,6%	21,1%
Cereals and flours	981.124	1.194.309	213.185	21,7%	1,9%
Soya bean	1.733.543	2.017.111	283.568	16,4%	3,2%
Fruits, vegetables, pulses	661.904	548.571	-113.333	-17,1%	0,9%
Wines, beverages, spirits and derivatives	1.161.845	973.324	-188.521	-16,2%	1,6%
Canned goods	335.863	343.339	7.476	2,2%	0,5%
Tobacco, coffee, cocoa	961.118	805.909	-155.210	-16,1%	1,3%
Oils and fats	1.285.187	1.267.691	-17.496	-1,4%	2,0%
Other food products	4.229.254	4.363.671	134.418	3,2%	7,0%
Frozen fish	735.027	678.503	-56.524	-7,7%	1,1%
Feedstuffs and fodder	1.691.024	955.746	-735.277	-43,5%	1,5%
Other cargo	12.911.197	11.774.050	-1.137.147	-8,8%	18,9%
Timber	494.932	433.689	-61.244	-12,4%	0,7%
Paper and pulp	2.456.352	2.679.525	223.173	9,1%	4,3%
Machinery and spare parts	3.670.419	3.211.145	-459.274	-12,5%	5,1%
Other cargo by type	6.289.493	5.449.691	-839.802	-13,4%	8,7%
Vehicles and transport parts	13.392.295	13.003.194	-389.102	-2,9%	20,8%
Automobiles and parts	1.747.836	2.010.911	263.075	15,1%	3,2%
Tare of platform and wagons (Ro-Ro)	4.422.126	4.286.164	-135.962	-3,1%	6,9%
Tare of containers	7.222.334	6.706.119	-516.215	-7,1%	10,7%

GOODS TRAFFIC

Goods by classification 4.3.7.

Ranking of goods (tonnes)

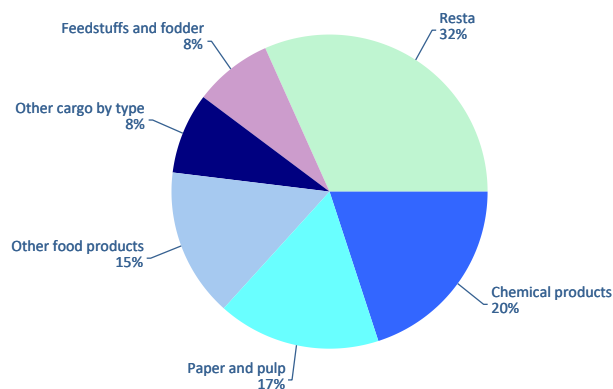


GOODS TRAFFIC

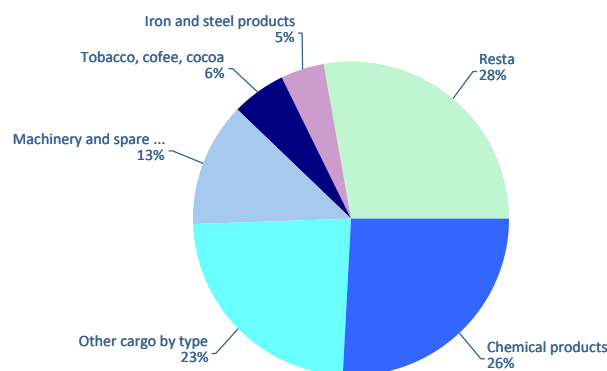
Containerized goods by classification 4.3.7. (Tares & transits not included)

Containerized goods classification	Loaded			Unloaded			Total monthly accumulated		
	2022	2023	%	2022	2023	%	2022	2023	%
Total tonnes (tares & transits not included)	8.980.441	7.887.903	-12,2%	5.765.848	5.805.697	0,7%	14.746.289	13.693.600	-7,1%
Chemical products	1.817.703	1.570.054	-13,6%	1.302.958	1.507.046	15,7%	3.120.661	3.077.100	-1,4%
Other cargo by type	696.650	647.066	-7,1%	1.480.475	1.357.734	-8,3%	2.177.125	2.004.800	-7,9%
Paper and pulp	1.199.278	1.332.890	11,1%	183.669	173.037	-5,8%	1.382.947	1.505.927	8,9%
Other food products	1.446.258	1.195.716	-17,3%	81.853	104.076	27,2%	1.528.111	1.299.793	-14,9%
Machinery and spare parts	484.637	464.110	-4,2%	881.034	740.400	-16,0%	1.365.671	1.204.510	-11,8%
Feedstuffs and fodder	1.183.597	645.884	-45,4%	32.826	56.059	70,8%	1.216.424	701.942	-42,3%
Other construction materials	350.108	263.215	-24,8%	219.323	221.345	0,9%	569.432	484.559	-14,9%
Wines, beverages, spirits and derivatives	409.787	418.935	2,2%	51.205	37.821	-26,1%	460.992	456.756	-0,9%
Iron and steel products	153.374	170.766	11,3%	300.372	264.700	-11,9%	453.747	435.466	-4,0%
Tobacco, coffee, cocoa	86.117	80.128	-7,0%	345.654	328.967	-4,8%	431.772	409.096	-5,3%
Automobiles and parts	133.629	133.540	-0,1%	165.105	210.379	27,4%	298.735	343.919	15,1%
Other metallurgical products	86.169	90.111	4,6%	178.236	157.178	-11,8%	264.405	247.289	-6,5%
Other minerals and metallic waste	170.185	182.814	7,4%	27.735	28.173	1,6%	197.920	210.987	6,6%
Other non-metallic minerals	110.561	111.939	1,2%	75.575	89.199	18,0%	186.136	201.138	8,1%
Oils and fats	169.784	137.368	-19,1%	37.359	42.949	15,0%	207.143	180.317	-13,0%
Canned goods	78.236	71.436	-8,7%	73.484	106.235	44,6%	151.720	177.670	17,1%
Fruits, vegetables, pulses	48.251	39.258	-18,6%	114.263	136.553	19,5%	162.514	175.811	8,2%
Biofuel	107.738	99.420	-7,7%	26.877	26.447	-1,6%	134.615	125.867	-6,5%
Natural/artificial fertilizer	51.206	42.965	-16,1%	34.870	52.436	50,4%	86.076	95.401	10,8%
Cereals and flours	44.130	56.698	28,5%	18.409	32.353	75,8%	62.538	89.051	42,4%
Scrap iron	34.385	26.495	-22,9%	18.964	22.596	19,2%	53.349	49.091	-8,0%
Frozen fish	9.706	5.777	-40,5%	48.065	37.335	-22,3%	57.771	43.112	-25,4%
Other petroleum products	22.709	20.139	-11,3%	13.842	14.213	2,7%	36.551	34.352	-6,0%
Timber	18.989	12.082	-36,4%	20.622	22.169	7,5%	39.611	34.251	-13,5%
Common salt	31.429	31.254	-0,6%	2.679	2.252	-15,9%	34.108	33.506	-1,8%
Coal	2.608	1.792	-31,3%	20.546	23.153	12,7%	23.154	24.945	7,7%
Fuel oil	9.450	7.958	-15,8%	4.021	6.862	70,7%	13.472	14.820	10,0%
Cement and clinker	15.464	13.253	-14,3%	5	77	1419,3%	15.469	13.331	-13,8%
Petroleum fuel gasses	2.910	7.484	157,2%	162	930	473,5%	3.072	8.414	173,9%
Asphalt	4.213	6.282	49,1%	17	16	-3,2%	4.230	6.298	48,9%
Potashes	298	215	-27,6%	2.502	1.567	-37,4%	2.800	1.783	-36,3%
Soya bean	80	3	-96,1%	2.221	1.016	-54,3%	2.301	1.019	-55,7%
Diesel oils	0	606		25	11	-57,0%	25	617	2342,9%
Iron ore	215	95	-55,7%	650	373	-42,6%	865	468	-45,9%
Phosphates	445	107	-76,0%	88	1	-99,4%	533	107	-79,8%
Petrol	117	36	-69,6%	157	16	-89,8%	274	52	-81,2%
Crude oil	20	12	-38,3%	0	22		20	34	71,5%
Natural gas	4	2	-50,9%	0	0		4	2	-50,9%

Distribution of main goods
Loaded 2023



Distribution of main goods
Unloaded 2023

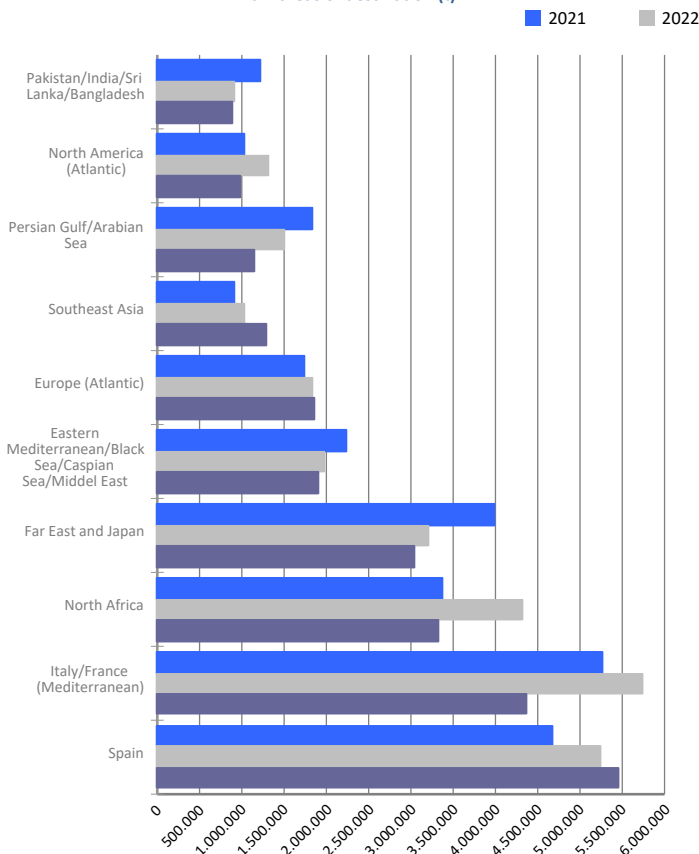


MARITIME TRAFFIC BY ORIGIN/DESTINATION

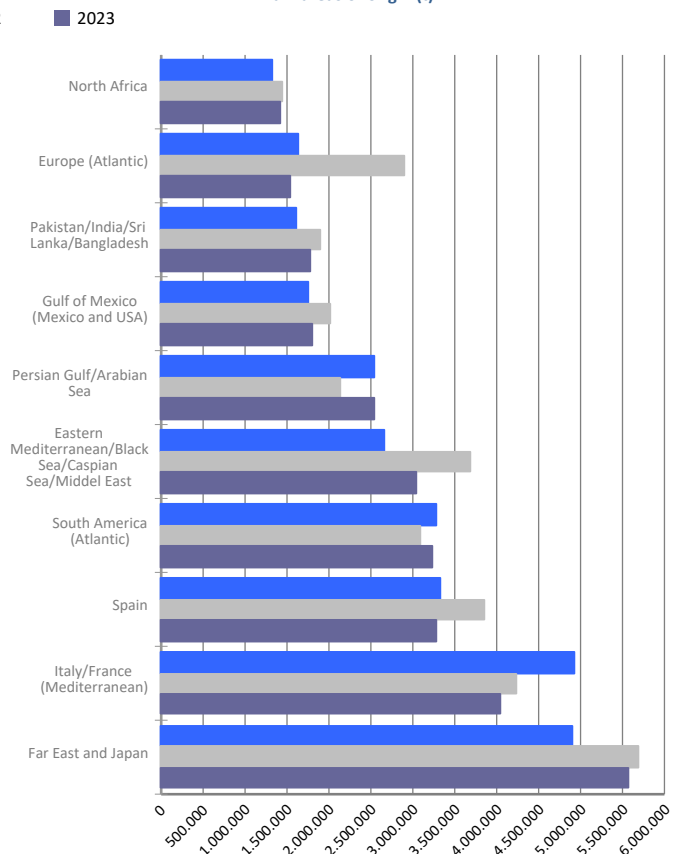
Geographical areas. Tonnes

Geographical areas	Monthly accumulated				% of total accum. 2023
	2022	2023	Diff. 23-22	%	
Tonnes	69.145.480	62.461.149	-6.684.331	-9,7%	100%
Spain	9.078.870	8.732.753	-346.117	-3,8%	14,0%
Far East and Japan	8.894.324	8.613.612	-280.712	-3,2%	13,8%
Italy/France (Mediterranean)	9.961.836	8.427.842	-1.533.994	-15,4%	13,5%
Eastern Mediterranean/Black Sea/Caspian Sea/Middel	5.659.442	4.946.150	-713.292	-12,6%	7,9%
North Africa	5.788.399	4.749.143	-1.039.255	-18,0%	7,6%
South America (Atlantic)	4.024.086	3.749.703	-274.384	-6,8%	6,0%
Persian Gulf/Arabian Sea	3.633.939	3.696.655	62.716	1,7%	5,9%
Europe (Atlantic)	4.737.108	3.386.137	-1.350.971	-28,5%	5,4%
Pakistan/India/Sri Lanka/Bangladesh	2.818.400	2.681.360	-137.040	-4,9%	4,3%
Gulf of Mexico (Mexico and USA)	2.955.477	2.638.572	-316.905	-10,7%	4,2%
Southeast Asia	2.411.983	2.524.263	112.280	4,7%	4,0%
West Africa	1.858.917	1.463.142	-395.775	-21,3%	2,3%
North America (Atlantic)	1.641.826	1.436.891	-204.935	-12,5%	2,3%
Canada (Atlantic) and Great Lakes	1.446.807	1.257.519	-189.288	-13,1%	2,0%
Central America and Caribbean	1.291.858	1.159.145	-132.713	-10,3%	1,9%
Red Sea	950.851	989.635	38.784	4,1%	1,6%
Unknown area (Tare of empty containers)	429.249	580.076	150.827	35,1%	0,9%
South America (Pacific)	589.240	570.401	-18.839	-3,2%	0,9%
South-Eastern Africa/Indian Ocean	576.690	511.271	-65.419	-11,3%	0,8%
Australia, New Zealand/Pacific Islands	238.895	217.323	-21.572	-9,0%	0,3%
North America (Pacific)	157.284	129.556	-27.728	-17,6%	0,2%

Main areas of destination (t)



Main areas of origin (t)

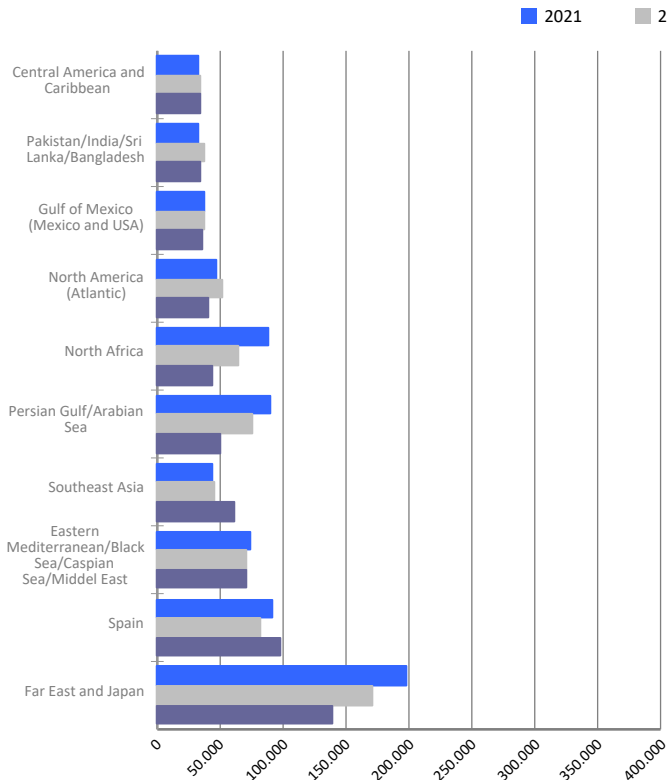


MARITIME TRAFFIC BY ORIGIN/DESTINATION

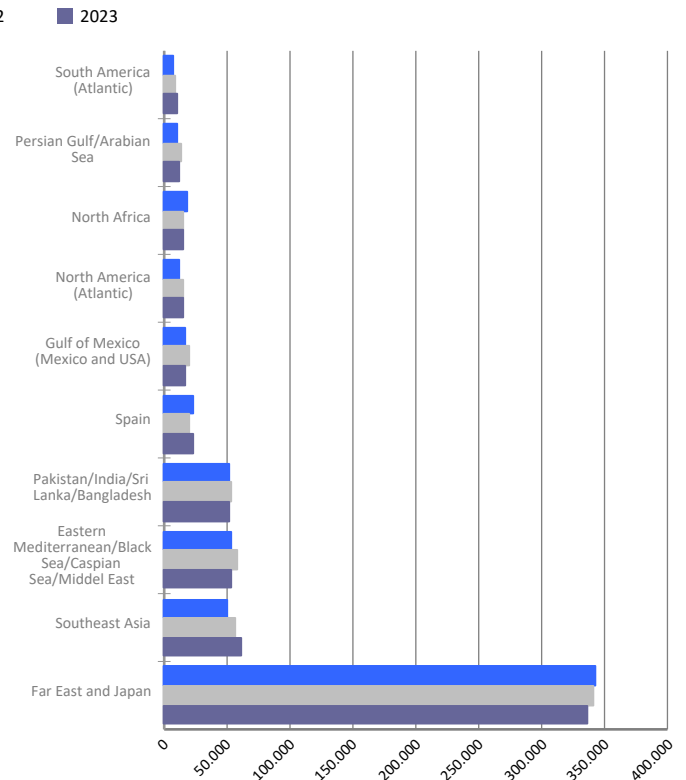
Geographical areas. Full TEU non transit

Geographical areas	Monthly accumulated				% of total accum. 2023
	2022	2023	Diff. 23-22	%	
Full TEU non transit	1.489.572	1.406.817	-82.755	-5,6%	100%
Far East and Japan	512.661	475.699	-36.962	-7,2%	33,8%
Southeast Asia	102.262	123.995	21.733	21,3%	8,8%
Eastern Mediterranean/Black Sea/Caspian Sea/Middel East	129.424	123.709	-5.715	-4,4%	8,8%
Spain	102.244	121.512	19.269	18,8%	8,6%
Pakistan/India/Sri Lanka/Bangladesh	91.510	85.675	-5.835	-6,4%	6,1%
Persian Gulf/Arabian Sea	88.772	63.055	-25.717	-29,0%	4,5%
North Africa	81.203	59.613	-21.590	-26,6%	4,2%
North America (Atlantic)	67.125	55.769	-11.356	-16,9%	4,0%
Gulf of Mexico (Mexico and USA)	58.571	52.609	-5.962	-10,2%	3,7%
Central America and Caribbean	41.313	41.092	-221	-0,5%	2,9%
South America (Atlantic)	37.040	34.786	-2.255	-6,1%	2,5%
South America (Pacific)	35.077	31.406	-3.671	-10,5%	2,2%
Red Sea	29.529	28.724	-805	-2,7%	2,0%
West Africa	29.942	28.538	-1.404	-4,7%	2,0%
South-Eastern Africa/Indian Ocean	26.727	24.497	-2.230	-8,3%	1,7%
Italy/France (Mediterranean)	12.484	19.655	7.171	57,4%	1,4%
Canada (Atlantic) and Great Lakes	15.896	13.125	-2.772	-17,4%	0,9%
Australia, New Zealand/Pacific Islands	12.559	11.919	-641	-5,1%	0,8%
North America (Pacific)	8.082	6.996	-1.086	-13,4%	0,5%
Europe (Atlantic)	7.153	4.446	-2.708	-37,9%	0,3%

Main areas of destination
Full TEU non transit



Main areas of origin
Full TEU non transit



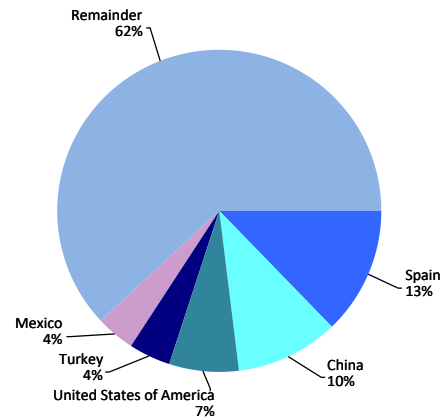
Note: From August 2014, the containerized cargo with origin or destination in Barcelona excludes maritime transit traffic and empty containers.

MARITIME TRAFFIC BY ORIGIN/DESTINATION

Ranking countries. Full TEU non transit

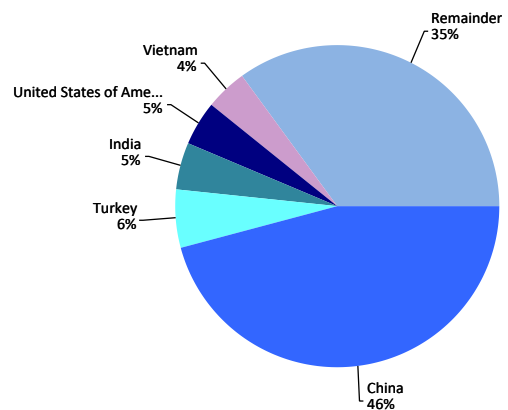
Loaded	Full TEU	% 23-22	% a/packaging
Spain	97.767	18,7%	12,9%
China	77.935	-15,9%	10,3%
United States of America	52.785	-22,4%	7,0%
Turkey	31.183	-13,2%	4,1%
Mexico	29.820	-3,4%	3,9%
United Arab Emirates	28.368	-38,0%	3,7%
India	27.844	-8,0%	3,7%
Saudi Arabia	26.944	-8,2%	3,5%
Japan	24.312	-13,1%	3,2%
Morocco	22.093	3,0%	2,9%
Malaysia	17.541	54,7%	2,3%
Korea (South)	16.617	-35,8%	2,2%
Israel	14.861	41,2%	2,0%
Vietnam	14.750	62,5%	1,9%
Indonesia	14.126	31,9%	1,9%
Remainder	262.533	-14,0%	34,6%
TOTAL	759.478	-9,3%	100%

Main countries. Loaded



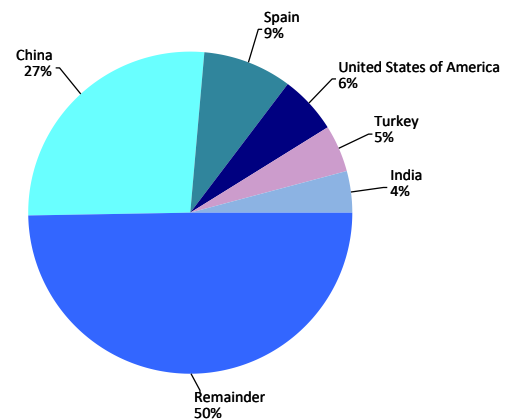
Unloaded	Full TEU	% 23-22	% a/packaging
China	297.371	-3,2%	45,9%
Turkey	37.820	-9,5%	5,8%
India	29.756	-1,9%	4,6%
United States of America	29.332	-2,5%	4,5%
Vietnam	26.745	13,4%	4,1%
Spain	23.745	19,3%	3,7%
Korea (South)	22.911	46,3%	3,5%
Bangladesh	13.096	-1,4%	2,0%
Egypt	11.759	7,8%	1,8%
Saudi Arabia	10.829	-10,6%	1,7%
Greece	8.893	1,4%	1,4%
Indonesia	8.325	-10,2%	1,3%
Thailand	7.766	8,8%	1,2%
Pakistan	7.713	-15,9%	1,2%
Brazil	7.283	17,3%	1,1%
Remainder	103.998	-2,6%	16,1%
TOTAL	647.339	-0,8%	100%

Main countries. Unloaded



Total	Full TEU	% 23-22	% a/packaging
China	375.306	-6,2%	26,7%
Spain	121.512	18,8%	8,6%
United States of America	82.117	-16,3%	5,8%
Turkey	69.003	-11,2%	4,9%
India	57.600	-5,0%	4,1%
Vietnam	41.495	27,0%	2,9%
Korea (South)	39.528	-4,9%	2,8%
Saudi Arabia	37.773	-8,9%	2,7%
Mexico	36.330	-7,8%	2,6%
United Arab Emirates	31.684	-36,0%	2,3%
Japan	31.574	-10,0%	2,2%
Egypt	24.628	-0,9%	1,8%
Morocco	24.552	2,6%	1,7%
Indonesia	22.451	12,4%	1,6%
Malaysia	21.424	36,2%	1,5%
Remainder	389.843	-8,7%	27,7%
TOTAL	1.406.817	-5,6%	100%

Main countries. Total



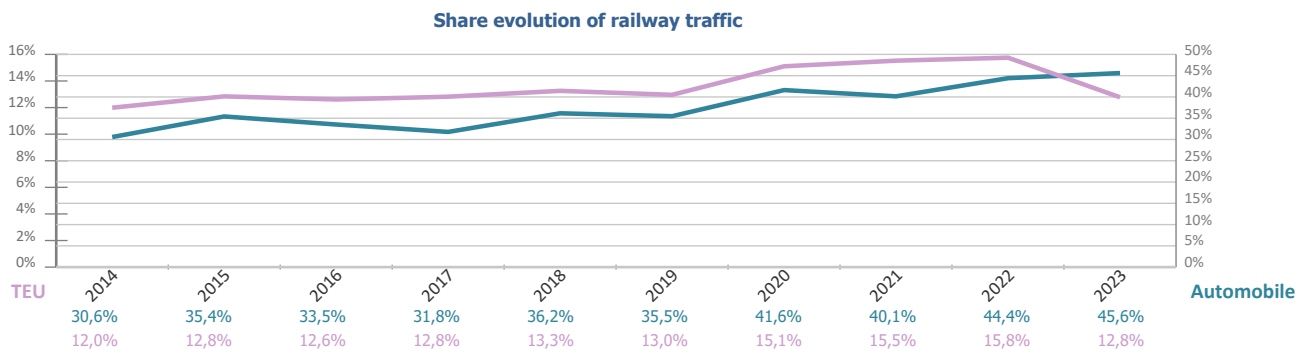
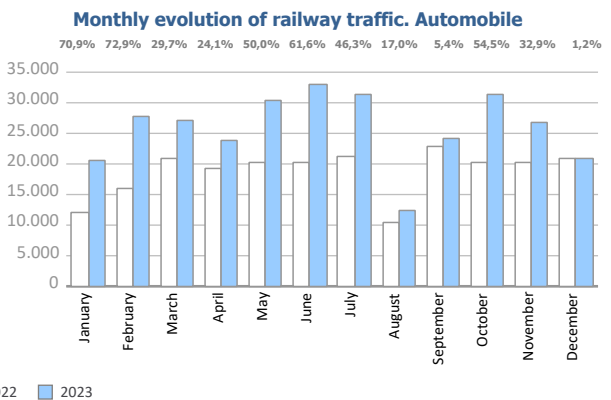
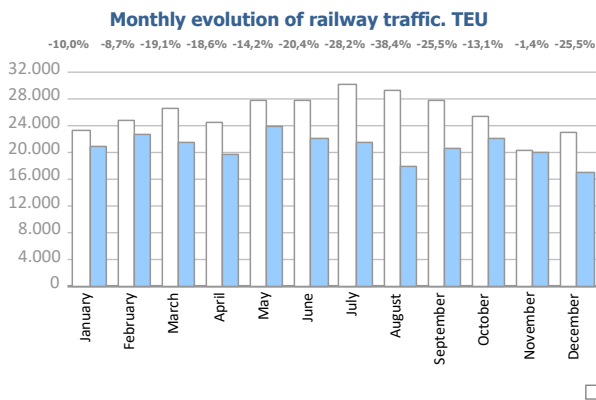
RAILWAY TRAFFIC

Monthly evolution of railway traffic. TEU

Monthly evolution of railway traffic	TEU 2022			TEU 2023			%		% of total port traffic 2023
	Loaded	Unloaded	Total	Loaded	Unloaded	Total	Monthly	Accumulated	
January	11.274	12.091	23.365	10.614	10.417	21.031	-10,0%	-10,0%	13,6%
February	12.294	12.497	24.791	11.229	11.403	22.632	-8,7%	-9,3%	14,9%
March	13.540	13.035	26.575	9.950	11.541	21.491	-19,1%	-12,8%	13,0%
April	13.270	11.110	24.380	9.763	10.085	19.848	-18,6%	-14,2%	13,1%
May	14.315	13.567	27.882	12.539	11.384	23.923	-14,2%	-14,2%	13,5%
June	15.453	12.479	27.932	10.527	11.702	22.229	-20,4%	-15,3%	12,8%
July	14.408	15.703	30.111	10.558	11.059	21.617	-28,2%	-17,4%	12,6%
August	14.848	14.420	29.268	9.139	8.899	18.038	-38,4%	-20,3%	10,9%
September	13.334	14.386	27.720	9.984	10.656	20.640	-25,5%	-20,9%	12,7%
October	10.749	14.502	25.251	10.745	11.209	21.954	-13,1%	-20,2%	13,8%
November	9.336	11.032	20.368	7.871	12.205	20.076	-1,4%	-18,8%	12,0%
December	11.310	11.693	23.003	7.527	9.616	17.143	-25,5%	-19,3%	10,7%
Total	154.131	156.515	310.646	120.446	130.176	250.622			12,8%

Monthly evolution of railway traffic. Automobile

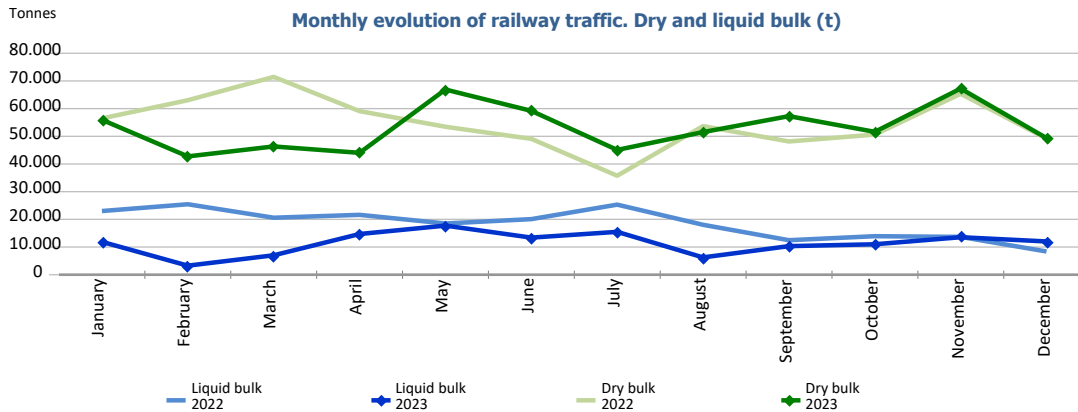
Monthly evolution of railway traffic	Automobile 2022			Automobile 2023			%		% of total port traffic 2023
	Loaded	Unloaded	Total	Loaded	Unloaded	Total	Monthly	Accumulated	
January	1.359	10.591	11.950	4.150	16.267	20.417	70,9%	70,9%	50,7%
February	2.174	13.813	15.987	5.096	22.553	27.649	72,9%	72,1%	43,1%
March	2.418	18.583	21.001	3.567	23.677	27.244	29,7%	53,9%	42,7%
April	2.670	16.613	19.283	4.515	19.415	23.930	24,1%	45,5%	41,5%
May	2.602	17.588	20.190	5.929	24.358	30.287	50,0%	46,5%	47,7%
June	2.449	17.909	20.358	5.878	27.021	32.899	61,6%	49,3%	49,5%
July	2.309	19.053	21.362	6.807	24.450	31.257	46,3%	48,8%	49,3%
August	2.620	7.962	10.582	1.982	10.394	12.376	17,0%	46,4%	31,7%
September	2.564	20.415	22.979	5.584	18.633	24.217	5,4%	40,7%	51,6%
October	1.750	18.476	20.226	6.117	25.138	31.255	54,5%	42,2%	57,3%
November	3.947	16.269	20.216	5.350	21.525	26.875	32,9%	41,3%	42,8%
December	3.619	17.133	20.752	3.150	17.854	21.004	1,2%	37,6%	37,7%
Total	30.481	194.405	224.886	58.125	251.285	309.410			45,6%



RAILWAY TRAFFIC

Monthly evolution of railway traffic. Dry and liquid bulk. Tonnes

Monthly evolution of railway traffic	Tonnes 2022			Tonnes 2023			%	
	Dry bulk	Liquid bulk	Total	Dry bulk	Liquid bulk	Total	Monthly	Accumulated
January	56.474	23.006	79.480	55.964	11.888	67.852	-14,6%	-14,6%
February	63.027	25.451	88.478	42.746	3.263	46.009	-48,0%	-32,2%
March	71.467	20.589	92.056	46.334	7.014	53.348	-42,0%	-35,7%
April	59.099	21.628	80.727	44.027	14.701	58.728	-27,3%	-33,7%
May	53.459	18.505	71.964	66.894	17.738	84.632	17,6%	-24,7%
June	49.089	20.079	69.168	59.200	13.398	72.598	5,0%	-20,5%
July	35.755	25.317	61.072	45.081	15.485	60.566	-0,8%	-18,3%
August	53.685	18.038	71.723	51.511	6.251	57.762	-19,5%	-18,4%
September	48.129	12.463	60.592	57.280	10.320	67.600	11,6%	-15,7%
October	50.628	13.911	64.539	51.617	10.995	62.612	-3,0%	-14,6%
November	65.362	13.659	79.021	67.236	13.547	80.783	2,2%	-13,0%
December	49.199	8.395	57.594	49.345	12.016	61.361	6,5%	-11,7%
Total	655.373	221.041	876.414	637.235	136.616	773.851		



Railway traffic.

Railway gauge traffic (u)	Monthly accumulated		%	% of accumulated total 2023
	2022	2023		
Iberian gauge	8.378	7.014	-16,3%	67,2%
UIC	319	557	74,6%	5,3%
FGC	2.537	2.868	13,0%	27,5%
Total	11.234	10.439	-7,1%	100%

