

Port of Barcelona traffic statistics

Accumulated data February 2024

Statistics Service

Index

Traffic indicators

Total traffic	3
Main indicators	4
Breakdown of total traffic	5
Breakdown of traffic in transit	6
Monthly evolution of traffic	7

Container traffic

TEU evolution	8
Container traffic (TEU)	9

Passenger traffic

Passenger traffic	10
Passenger classification	11

Automobile traffic

Automobile traffic	12
--------------------	----

Short Sea Shipping traffic (SSS)

SSS Goods classification	13
SSS General cargo and Motorways of the sea (MoS)	14
SSS Ranking countries	15

Vessel traffic

Vessel traffic	16
----------------	----

Goods traffic

Mode of packaging and navigation	17
Goods by classification 4.3.7.	18
Goods ranking	19
Containerized goods by classification 4.3.7.	20

Maritime traffic by origin/destination

Geographical areas. Tonnes	21
Geographical areas. Full TEU non transit	22
Ranqing countries. Full TEU non transit	23

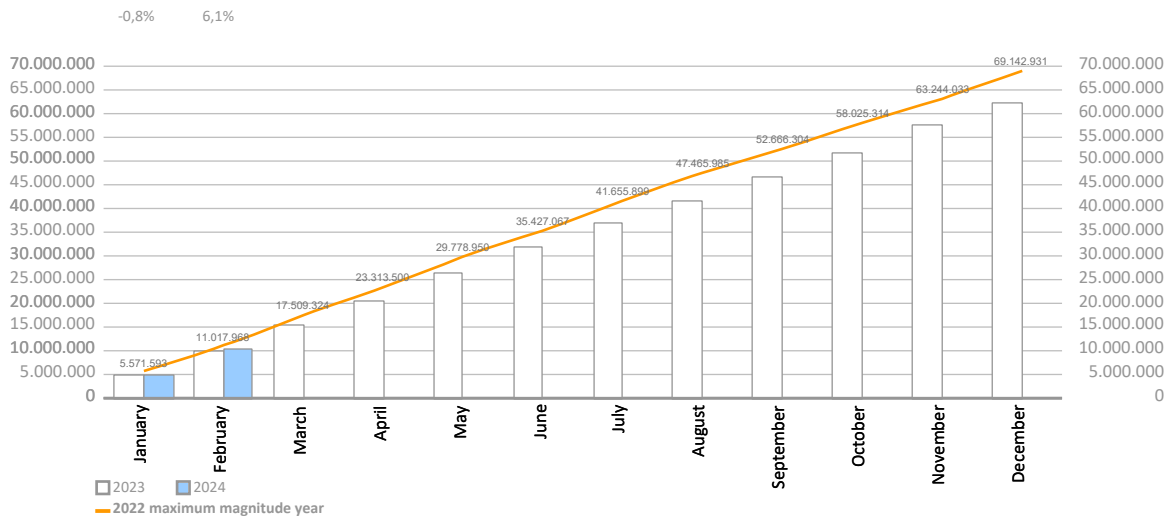
Railway traffic

Evolution of railway traffic (TEU and automobile)	24
Evolution of railway traffic (Solid and liquid bulk)	25
Railway gauge traffic	25

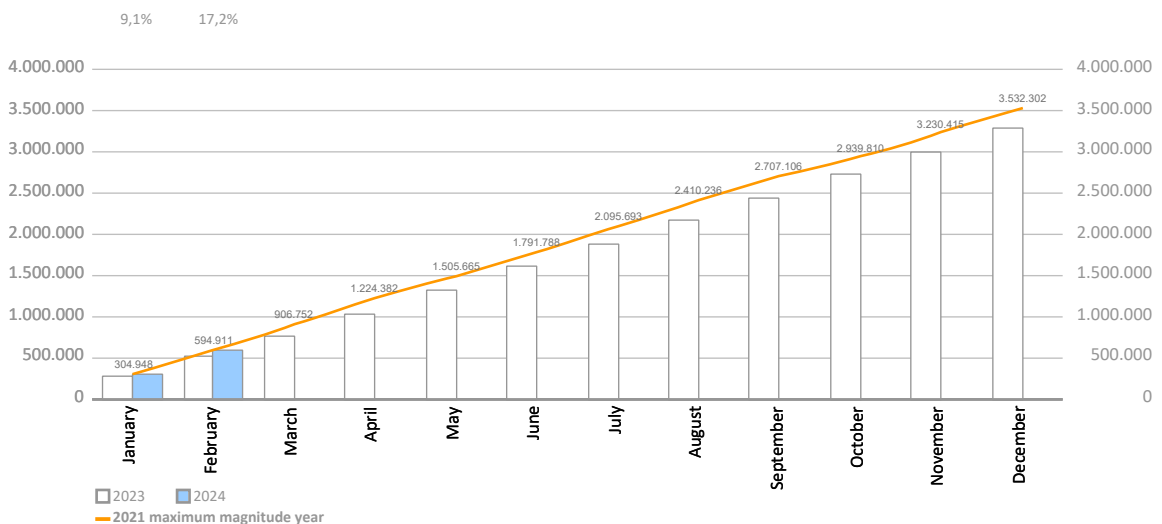
TRAFFIC INDICATORS

Total traffic	Monthly accumulated				% 24-23 accum. January	% 23-22 accum. December	Total traffic 2023
	2023	2024	Diff. 24-23	%			
Total throughput (tonnes)	9.769.027	10.363.662	594.635	6,1%	-0,8%	-9,7%	62.429.822
Supplies	224.662	202.787	-21.875	-9,7%	-4,3%	-14,1%	1.593.760
Fishing	150	246	95	63,2%	240,8%	-51,8%	1.544
TOTAL TRAFFIC (tonnes)	9.993.840	10.566.695	572.856	5,7%	-0,9%	-9,8%	64.025.125
TEU	514.501	602.751	88.250	17,2%	9,1%	-6,9%	3.280.128
UTI	57.686	63.564	5.878	10,2%	5,9%	-1,3%	413.945
Automobiles (units)	119.898	110.469	-9.429	-7,9%	4,3%	33,7%	790.318
Vessels (units)	1.245	1.243	-2	-0,2%	-0,3%	0,6%	8.766
Railway traffic (units)	1.695	1.806	111	6,5%	-6,3%	-7,1%	10.439
Cruise passengers (units)	172.207	185.975	13.768	8,0%	19,4%	52,9%	3.569.125
Ferry passengers (units)	127.321	127.158	-163	-0,1%	-1,9%	8,7%	1.735.495
Automobile passengers (units)	39.021	40.594	1.573	4,0%	2,3%	6,2%	515.293

Monthly evolution of the accumulated traffic of goods. Tonnes



Monthly evolution of the accumulated traffic of goods. TEU



TRAFFIC INDICATORS

Main indicators	Monthly accumulated				Last 12 months	Total traffic 2023	% 12 months-2023
	2023	2024	Diff. 24-23	%			
Goods indicators by navigation and operation (tonnes)							
Navigation (t)	9.769.027	10.363.662	594.635	6,1%	63.024.457	62.429.822	1,0%
Domestic	1.142.970	1.208.832	65.863	5,8%	8.089.423	8.023.560	0,8%
Foreign	8.626.057	9.154.830	528.773	6,1%	54.935.035	54.406.262	1,0%
Operation (t)	9.769.027	10.363.662	594.635	6,1%	63.024.457	62.429.822	1,0%
Loaded	2.998.661	2.915.428	-83.233	-2,8%	19.088.686	19.171.919	-0,4%
Unloaded	3.570.133	3.255.717	-314.416	-8,8%	22.326.593	22.641.009	-1,4%
Transit	3.200.233	4.192.517	992.284	31,0%	21.609.179	20.616.894	4,8%
Goods indicators by main units							
Containers (TEU)	514.501	602.751	88.250	17,2%	3.368.378	3.280.128	2,7%
TEU O/D	306.826	311.116	4.290	1,4%	1.964.601	1.960.311	0,2%
TEU transit	207.676	291.635	83.960	40,4%	1.403.777	1.319.818	6,4%
Containerized tonnes	5.312.359	6.160.539	848.180	16,0%	34.373.002	33.524.822	2,5%
Level of containerization	76,71%	78,08%			75,19%	74,92%	
Passengers (u)	299.528	313.133	13.605	4,5%	5.318.225	5.304.620	0,3%
Regular line	127.321	127.158	-163	-0,1%	1.735.332	1.735.495	-0,0%
Pleasure cruises	172.207	185.975	13.768	8,0%	3.582.893	3.569.125	0,4%
Automobiles (u)	119.898	110.469	-9.429	-7,9%	780.889	790.318	-1,2%
Loaded	61.547	64.960	3.413	5,5%	415.845	412.432	0,8%
Unloaded	42.925	28.493	-14.432	-33,6%	241.150	255.582	-5,6%
Transit	15.426	17.016	1.590	10,3%	123.894	122.304	1,3%
Vessels (u)	1.245	1.243	-2	-0,2%	8.764	8.766	-0,0%
Number of calls	1.245	1.243	-2	-0,2%	8.764	8.766	-0,0%
GT	47.160.873	48.124.439	963.566	2,0%	375.264.282	374.300.716	0,3%
Average tonnes by vessel	7.847	8.338	491	6,3%	7.191	7.122	1,0%
UTI	57.686	63.564	5.878	10,2%	419.823	413.945	1,4%
Domestic	33.461	36.618	3.157	9,4%	262.653	259.496	1,2%
% Full	63,2%	64,0%			62,1%	61,9%	
Foreign	24.225	26.946	2.721	11,2%	157.170	154.449	1,8%
% Full	92,9%	91,8%			91,4%	91,5%	

TRAFFIC INDICATORS

Breakdown of total traffic (tonnes)	Monthly accumulated				% 24-23 accum. January	% 23-22 accum. December	% of total accum. 2024
	2023	2024	Diff. 24-23	%			
Goods indicators by type of packaging (t)	9.769.027	10.363.662	594.635	6,1%	-0,8%	-9,7%	100%
Liquid bulk	2.060.754	1.787.257	-273.497	-13,3%	-22,6%	-17,3%	17,2%
Hydrocarbons	1.419.338	1.218.406	-200.933	-14,2%	-34,6%	-22,2%	11,8%
Petrol	538.022	456.887	-81.136	-15,1%	-24,4%	-24,5%	4,4%
Natural gas	403.089	340.606	-62.484	-15,5%	-43,6%	-20,5%	3,3%
Diesel oils	360.932	229.404	-131.528	-36,4%	-55,4%	-14,6%	2,2%
Fuel oil	100.965	140.194	39.229	38,9%	-2,1%	-29,6%	1,4%
Other petroleum products	11.315	46.269	34.954	308,9%	127,4%	-39,2%	0,4%
Remainder	5.014	5.046	32	0,6%	-49,5%	-2,0%	0,0%
Other liquid bulk	641.416	568.851	-72.564	-11,3%	2,1%	-0,6%	5,5%
Chemical products	172.922	245.691	72.769	42,1%	77,8%	13,6%	2,4%
Biofuel	275.502	198.298	-77.205	-28,0%	-28,2%	-11,7%	1,9%
Oils and fats	188.878	110.585	-78.293	-41,5%	-16,1%	3,8%	1,1%
Natural/artificial fertilizer	4.113	14.278	10.164	247,1%	-100,0%	-0,2%	0,1%
Remainder	0	0	0			-10,5%	0,0%
Dry bulk	782.644	686.777	-95.867	-12,2%	-21,6%	5,7%	6,6%
Special installation	735.020	640.510	-94.511	-12,9%	-23,6%	10,0%	6,2%
Soya bean	272.614	267.574	-5.040	-1,8%	-2,5%	12,9%	2,6%
Cereals and flours	121.453	137.375	15.923	13,1%	-5,6%	41,9%	1,3%
Potashes	78.793	75.082	-3.711	-4,7%	23,5%	-18,0%	0,7%
Cement and clinker	151.117	73.818	-77.299	-51,2%	-59,1%	9,8%	0,7%
Common salt	111.044	72.958	-38.086	-34,3%	-86,0%	-0,9%	0,7%
Remainder	0	13.703	13.703			-42,3%	0,1%
Without special installation	47.624	46.268	-1.356	-2,8%	8,9%	-32,2%	0,4%
Scrap iron	37.574	31.173	-6.401	-17,0%	-24,9%	-18,4%	0,3%
Other non-metallic minerals	6.600	7.500	900	13,6%	6,1%	-24,0%	0,1%
Chemical products	3.450	4.095	645	18,7%	0,0%	-25,7%	0,0%
Other minerals and metallic waste	0	3.500	3.500	0,0%	0,0%	-12,5%	0,0%
Remainder	0	0	0			-80,7%	0,0%
General cargo	6.925.629	7.889.628	963.999	13,9%	7,6%	-8,7%	76,1%
Containerized	5.312.359	6.160.539	848.180	16,0%	8,0%	-10,9%	59,4%
Tare of containers	1.053.536	1.227.440	173.904	16,5%	8,5%	-7,1%	11,8%
Chemical products	773.308	857.639	84.330	10,9%	-6,2%	-10,1%	8,3%
Other cargo by type	591.344	660.086	68.742	11,6%	2,0%	-17,4%	6,4%
Other food products	560.676	658.154	97.478	17,4%	22,0%	3,8%	6,4%
Paper and pulp	376.581	450.576	73.995	19,6%	24,8%	9,8%	4,3%
Remainder	1.956.914	2.306.645	349.731	17,9%	8,2%	-18,1%	22,3%
Non-containerized	1.613.270	1.729.090	115.819	7,2%	6,4%	-1,5%	16,7%
Tare of platform and wagons (Ro-Ro)	585.769	631.402	45.632	7,8%	4,2%	-3,1%	6,1%
Other cargo by type	284.163	296.165	12.002	4,2%	2,9%	-3,7%	2,9%
Machinery and spare parts	170.871	193.835	22.964	13,4%	7,4%	1,0%	1,9%
Automobiles and parts	207.002	181.980	-25.022	-12,1%	-4,1%	30,1%	1,8%
Frozen fish	79.144	79.928	784	1,0%	-2,7%	-8,7%	0,8%
Remainder	286.321	345.780	59.459	20,8%	22,3%	-9,7%	3,3%

TRAFFIC INDICATORS

Breakdown of traffic in transit (tonnes)	Monthly accumulated				% 24-23 accum. January	% 23-22 accum. December	% of total accum. 2024
	2023	2024	Diff. 24-23	%			
Goods indicators by type of packaging (t)	3.200.233	4.192.517	992.284	31,0%	14,2%	-19,5%	100%
Liquid bulk	661.635	646.261	-15.373	-2,3%	-19,7%	-31,8%	15,4%
Hydrocarbons	440.001	382.680	-57.321	-13,0%	-35,6%	-42,1%	9,1%
Petrol	304.540	273.746	-30.794	-10,1%	-39,2%	-55,4%	6,5%
Diesel oils	74.793	57.063	-17.730	-23,7%	-35,6%	-22,2%	1,4%
Fuel oil	60.668	51.871	-8.797	-14,5%	-11,8%	-23,1%	1,2%
Remainder	0	0	0			-52,0%	0,0%
Other liquid bulk	221.633	263.581	41.948	18,9%	3,2%	1,1%	6,3%
Biofuel	150.427	142.968	-7.459	-5,0%	-12,3%	-19,9%	3,4%
Chemical products	57.641	120.613	62.972	109,3%	100,4%	100,1%	2,9%
Oils and fats	13.565	0	-13.565			-18,0%	0,0%
Remainder	0	0	0			-23,1%	0,0%
Dry bulk	0	0	0			505,8%	0,0%
Special installation	0	0	0			505,8%	0,0%
Remainder	0	0	0			505,8%	0,0%
Without special installation	0	0	0				0,0%
Remainder	0	0	0				0,0%
General cargo	2.538.598	3.546.255	1.007.657	39,7%	22,1%	-15,7%	84,6%
Containerized	2.470.556	3.442.979	972.424	39,4%	21,7%	-15,9%	82,1%
Tare of containers	429.528	597.601	168.073	39,1%	21,5%	-14,9%	14,3%
Other food products	318.694	449.050	130.356	40,9%	46,6%	17,2%	10,7%
Other cargo by type	272.925	368.083	95.158	34,9%	14,0%	-26,7%	8,8%
Chemical products	305.728	338.997	33.269	10,9%	-18,7%	-21,9%	8,1%
Other construction materials	172.354	230.607	58.252	33,8%	5,6%	-34,7%	5,5%
Remainder	971.325	1.458.642	487.317	50,2%	31,9%	-17,3%	34,8%
Non-containerized	68.042	103.276	35.234	51,8%	43,0%	-6,2%	2,5%
Automobiles and parts	24.171	30.496	6.326	26,2%	22,8%	38,6%	0,7%
Tare of platform and wagons (Ro-Ro)	10.418	17.621	7.204	69,1%	49,7%	-29,0%	0,4%
Oils and fats	1.661	16.786	15.125	910,4%	709,1%	-66,8%	0,4%
Wines, beverages, spirits and derivatives	3.267	12.425	9.158	280,3%	363,8%	473,4%	0,3%
Other cargo by type	13.432	12.025	-1.408	-10,5%	0,6%	-19,8%	0,3%
Remainder	15.093	13.923	-1.170	-7,8%	-23,1%	-24,0%	0,3%

TRAFFIC INDICATORS

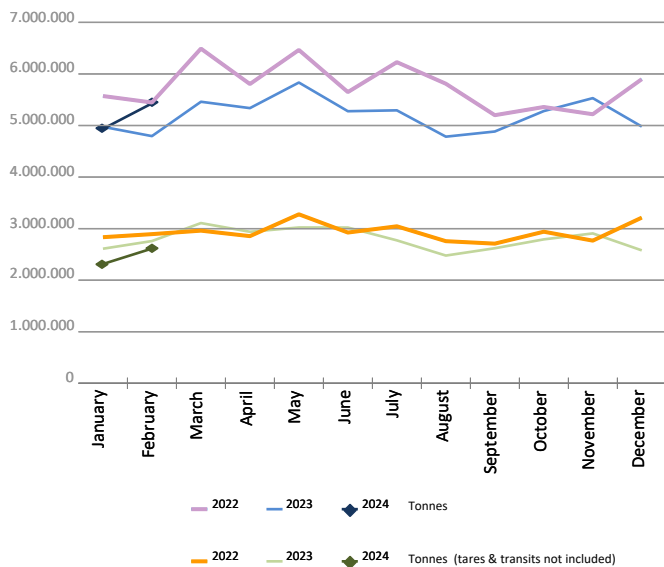
Monthly evolution of traffic. Tonnes

Monthly evolution of traffic	Total tonnes			%		Tonnes (tares & transits not included)			%	
	2023	2024	Diff. 24-23	Monthly	Accumulated	2023	2024	Diff. 24-23	Monthly	Accumulated
January	4.974.830	4.934.766	-40.064	-0,8%	-0,8%	2.610.317	2.313.981	-296.335	-11,4%	-11,4%
February	4.794.197	5.428.896	634.699	13,2%	6,1%	2.759.119	2.613.546	-145.573	-5,3%	-8,2%
March	5.460.878					3.107.624				
April	5.337.004					2.938.796				
May	5.833.869					3.022.618				
June	5.277.068					3.020.643				
July	5.294.334					2.772.431				
August	4.783.507					2.477.576				
September	4.883.691					2.619.609				
October	5.279.703					2.791.713				
November	5.530.791					2.907.384				
December	4.979.950					2.578.492				
Total	62.429.822	10.363.662				33.606.321	4.927.527			

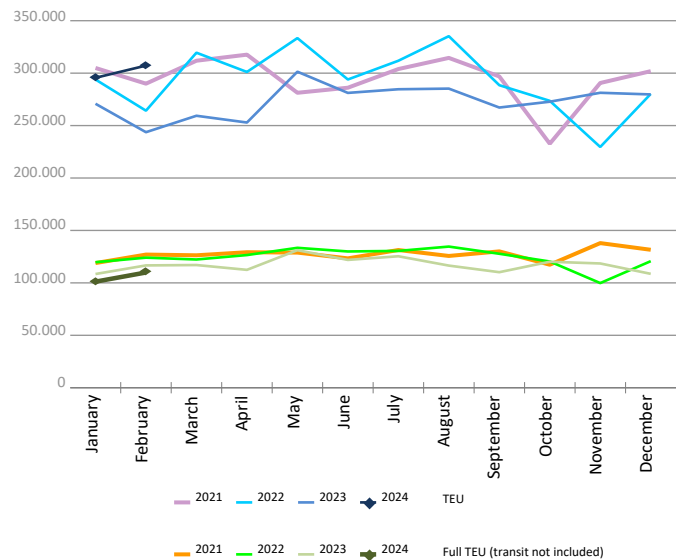
Monthly evolution of traffic. TEU

Monthly evolution of traffic	Total TEU			%		Full TEU (transit not included)			%	
	2023	2024	Diff. 24-23	Monthly	Accumulated	2023	2024	Diff. 24-23	Monthly	Accumulated
January	270.816	295.566	24.750	9,1%	9,1%	108.430	101.153	-7.277	-6,7%	-6,7%
February	243.685	307.185	63.500	26,1%	17,2%	116.640	109.888	-6.752	-5,8%	-6,2%
March	259.357					117.011				
April	252.905					112.397				
May	301.360					131.146				
June	281.167					121.905				
July	284.638					125.356				
August	285.262					116.482				
September	267.202					110.160				
October	272.766					120.158				
November	281.277					118.502				
December	279.694					108.620				
Total	3.280.128	602.751				1.406.805	211.041			

Goods (total tonnes)



Containers (total TEU)



CONTAINER TRAFFIC

TEU evolution

Full-unloaded foreign	Full TEU			%		Full-loaded foreign	Full TEU			%	
	2023	2024	Diff. 24-23	Monthly	Accumulated		2023	2024	Diff. 24-23	Monthly	Accumulated
January	49.138	41.777	-7.361	-15,0%	-15,0%	January	51.046	49.939	-1.107	-2,2%	-2,2%
February	51.449	44.504	-6.945	-13,5%	-14,2%	February	56.052	55.503	-549	-1,0%	-1,5%
March	44.515					March	60.781				
April	51.432					April	51.392				
May	64.095					May	56.516				
June	53.940					June	57.195				
July	59.685					July	54.831				
August	56.638					August	50.134				
September	48.415					September	50.743				
October	52.489					October	57.844				
November	48.781					November	59.645				
December	43.001					December	55.662				
Total	623.574	86.281				Total	661.838	105.442			

Full-unloaded domestic	Full TEU			%		Full-loaded domestic	Full TEU			%	
	2023	2024	Diff. 24-23	Monthly	Accumulated		2023	2024	Diff. 24-23	Monthly	Accumulated
January	1.702	2.174	473	27,8%	27,8%	January	6.545	7.264	719	11,0%	11,0%
February	1.836	2.269	434	23,6%	25,6%	February	7.304	7.612	308	4,2%	7,4%
March	2.227					March	9.488				
April	1.818					April	7.756				
May	2.223					May	8.313				
June	1.938					June	8.833				
July	1.881					July	8.960				
August	1.989					August	7.722				
September	2.163					September	8.839				
October	2.164					October	7.662				
November	1.913					November	8.164				
December	1.886					December	8.072				
Total	23.737	4.443				Total	97.656	14.876			

Full - Transit	Full TEU			%		Empty	Empty TEU			%	
	2023	2024	Diff. 24-23	Monthly	Accumulated		2023	2024	Diff. 24-23	Monthly	Accumulated
January	97.136	112.121	14.985	15,4%	15,4%	January	65.251	82.292	17.042	26,1%	26,1%
February	71.919	117.902	45.983	63,9%	36,1%	February	55.126	79.395	24.269	44,0%	34,3%
March	83.590					March	58.757				
April	83.957					April	56.551				
May	97.479					May	72.735				
June	84.535					June	74.728				
July	93.112					July	66.171				
August	83.799					August	84.981				
September	86.284					September	70.759				
October	90.687					October	61.921				
November	86.563					November	76.212				
December	90.643					December	80.432				
Total	1.049.701	230.023				Total	823.623	161.687			

CONTAINER TRAFFIC

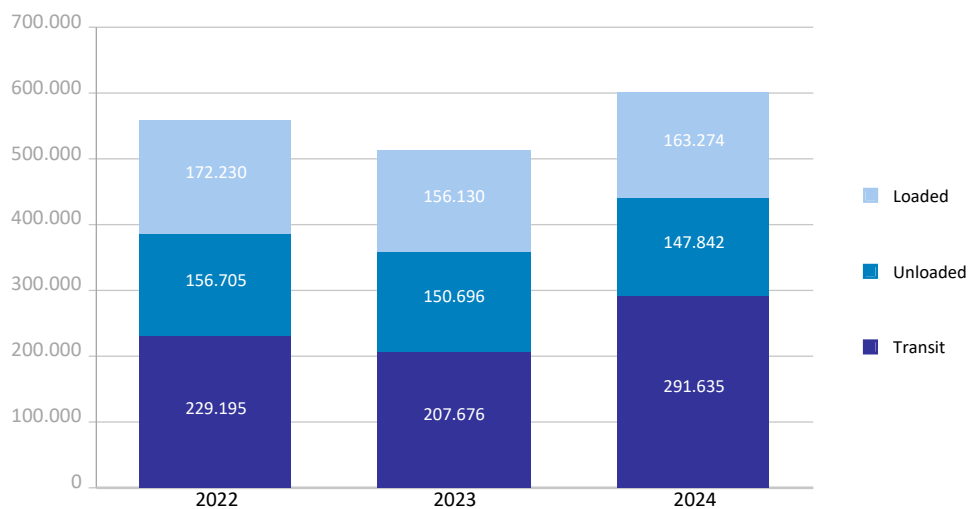
TEU

Container traffic	Monthly accumulated 2023			Monthly accumulated 2024			%
	Domestic	Foreign	Total	Domestic	Foreign	Total	
Total traffic	34.317	480.184	514.501	35.529	567.222	602.751	17,2%
Unloaded	19.306	242.872	262.178	19.527	285.929	305.456	16,5%
Roll On-Roll Off	3.569	1.955	5.524	3.791	3.064	6.855	24,1%
Lift On-Lift Off	15.738	240.917	256.654	15.737	282.865	298.601	16,3%
Loaded	15.011	237.313	252.324	16.002	281.294	297.295	17,8%
Roll On-Roll Off	3.824	2.082	5.906	3.893	2.946	6.839	15,8%
Lift On-Lift Off	11.187	235.231	246.418	12.109	278.348	290.457	17,9%

Breakdown by navigation and operation	Monthly accumulated 2023			Monthly accumulated 2024			%
	Domestic	Foreign	Total	Domestic	Foreign	Total	
Loaded	14.988	141.142	156.130	15.997	147.277	163.274	4,6%
Full	13.849	107.097	120.946	14.876	105.442	120.318	-0,5%
Empty	1.139	34.045	35.184	1.121	41.836	42.957	22,1%
Unloaded	18.952	131.744	150.696	19.200	128.642	147.842	-1,9%
Full	3.537	100.587	104.124	4.443	86.281	90.724	-12,9%
Empty	15.415	31.158	46.573	14.757	42.362	57.118	22,6%
Transit	377	207.299	207.676	332	291.303	291.635	40,4%
Full	38	169.017	169.055	5	230.018	230.023	36,1%
Empty	339	38.282	38.621	328	61.285	61.613	59,5%

Total traffic	34.317	480.184	514.501	35.529	567.222	602.751	17,2%
Full	17.424	376.701	394.125	19.324	421.740	441.064	11,9%
Empty	16.893	103.484	120.377	16.205	145.482	161.687	34,3%
% Empty	49,2%	21,6%	23,4%	45,6%	25,6%	26,8%	
% Transit	1,1%	43,2%	40,4%	0,9%	51,4%	48,4%	

General cargo distribution by operation (TEU)

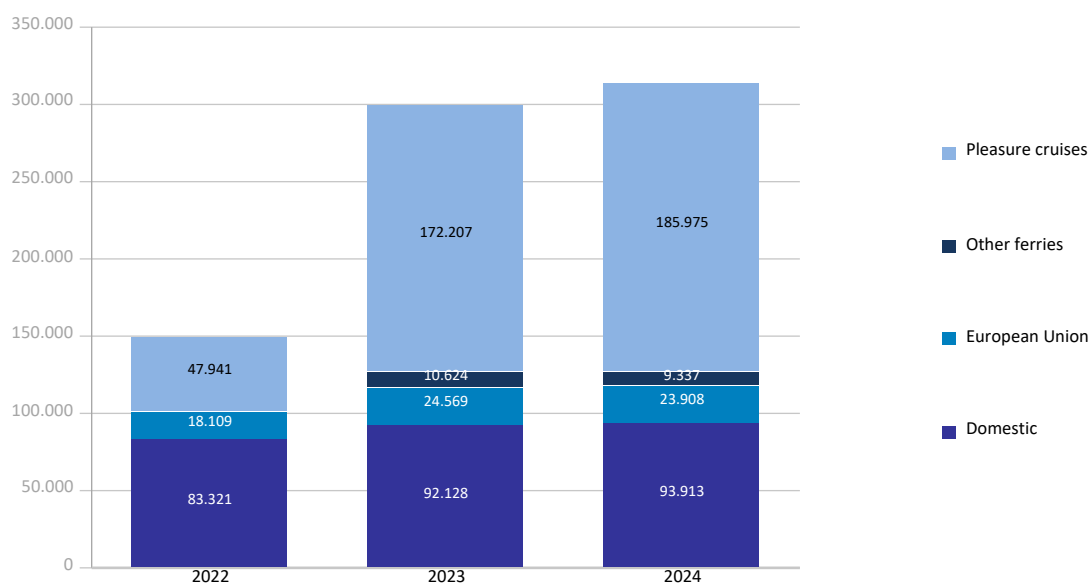


PASSENGER TRAFFIC

Total passenger traffic (units)	Monthly accumulated				% 24-23 accum. January	% 23-22 accum. December
	2023	2024	Diff. 24-23	%		
Total passengers	299.528	313.133	13.605	4,5%	10,2%	35,0%
Embarkation	92.630	106.208	13.578	14,7%	12,2%	24,9%
Disembarkation	88.232	103.184	14.952	16,9%	16,1%	26,2%
Transit	118.666	103.741	-14.925	-12,6%	3,8%	61,6%
Regular line ferries	127.321	127.158	-163	-0,1%	-1,9%	8,7%
Embarkation	66.351	65.727	-624	-0,9%	-1,8%	7,9%
Disembarkation	60.970	61.431	461	0,8%	-2,0%	9,6%
Domestic	92.128	93.913	1.785	1,9%	-1,6%	2,0%
Embarkation	50.151	50.780	629	1,3%	-1,0%	1,8%
Disembarkation	41.977	43.133	1.156	2,8%	-2,4%	2,2%
European Union	24.569	23.908	-661	-2,7%	-1,7%	24,6%
Embarkation	11.346	11.329	-17	-0,1%	1,4%	23,7%
Disembarkation	13.223	12.579	-644	-4,9%	-4,5%	25,4%
Other ferries	10.624	9.337	-1.287	-12,1%	-5,0%	31,1%
Embarkation	4.854	3.618	-1.236	-25,5%	-20,4%	22,7%
Disembarkation	5.770	5.719	-51	-0,9%	4,4%	41,1%
Pleasure cruises	172.207	185.975	13.768	8,0%	19,4%	52,9%
Embarkation	26.279	40.481	14.202	54,0%	47,7%	46,0%
Disembarkation	27.262	41.753	14.491	53,2%	51,3%	46,1%
Transit	118.666	103.741	-14.925	-12,6%	3,8%	61,6%

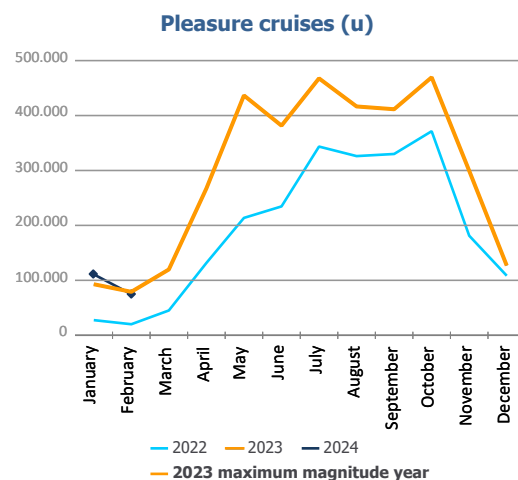
Total passenger calls (units)	Monthly accumulated				% 24-23 accum. January	% 23-22 accum. December
	2023	2024	Diff. 24-23	%		
Total number of calls	522	492	-30	-5,7%	-5,9%	0,8%
Regular Line ferries	476	453	-23	-4,8%	-6,2%	1,1%
Pleasure cruises	46	39	-7	-15,2%	-3,8%	-0,2%

Passenger traffic distribution (u)

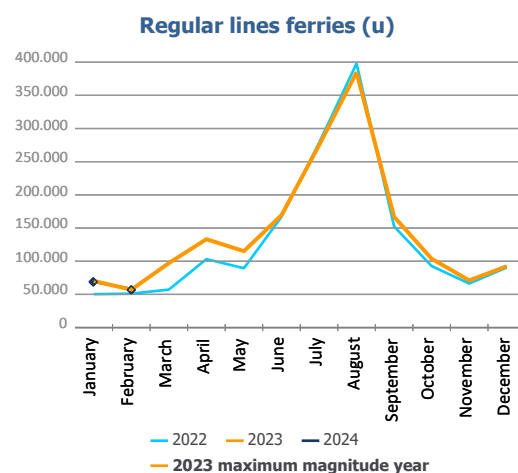


PASSENGER CLASSIFICATION

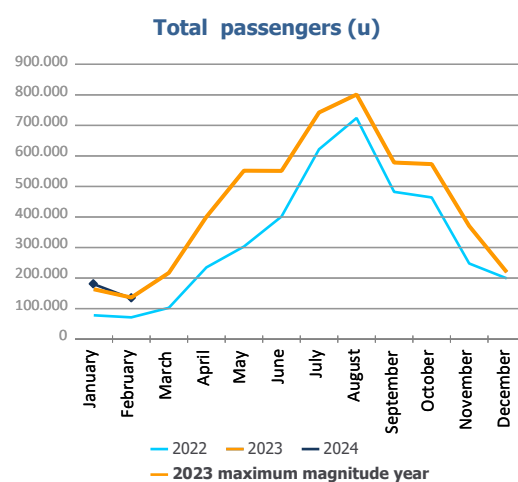
Monthly evolution of passenger traffic	Pleasure cruises			%	
	2023	2024	Diff. 24-23	Monthly	Accumulated
January	93.013	111.036	18.023	19,4%	19,4%
February	79.194	74.939	-4.255	-5,4%	8,0%
March	119.885				
April	267.420				
May	436.569				
June	381.587				
July	467.607				
August	416.517				
September	411.457				
October	469.510				
November	299.424				
December	126.942				
Total	3.569.125	185.975			



Monthly evolution of passenger traffic	Regular lines ferries			%	
	2023	2024	Diff. 24-23	Monthly	Accumulated
January	70.262	68.931	-1.331	-1,9%	-1,9%
February	57.059	58.227	1.168	2,0%	-0,1%
March	97.166				
April	133.201				
May	115.112				
June	169.419				
July	274.632				
August	384.652				
September	166.887				
October	103.714				
November	71.033				
December	92.358				
Total	1.735.495	127.158			



Monthly evolution of passenger traffic	Total passengers			%	
	2023	2024	Diff. 24-23	Monthly	Accumulated
January	163.275	179.967	16.692	10,2%	10,2%
February	136.253	133.166	-3.087	-2,3%	4,5%
March	217.051				
April	400.621				
May	551.681				
June	551.006				
July	742.239				
August	801.169				
September	578.344				
October	573.224				
November	370.457				
December	219.300				
Total	5.304.620	313.133			

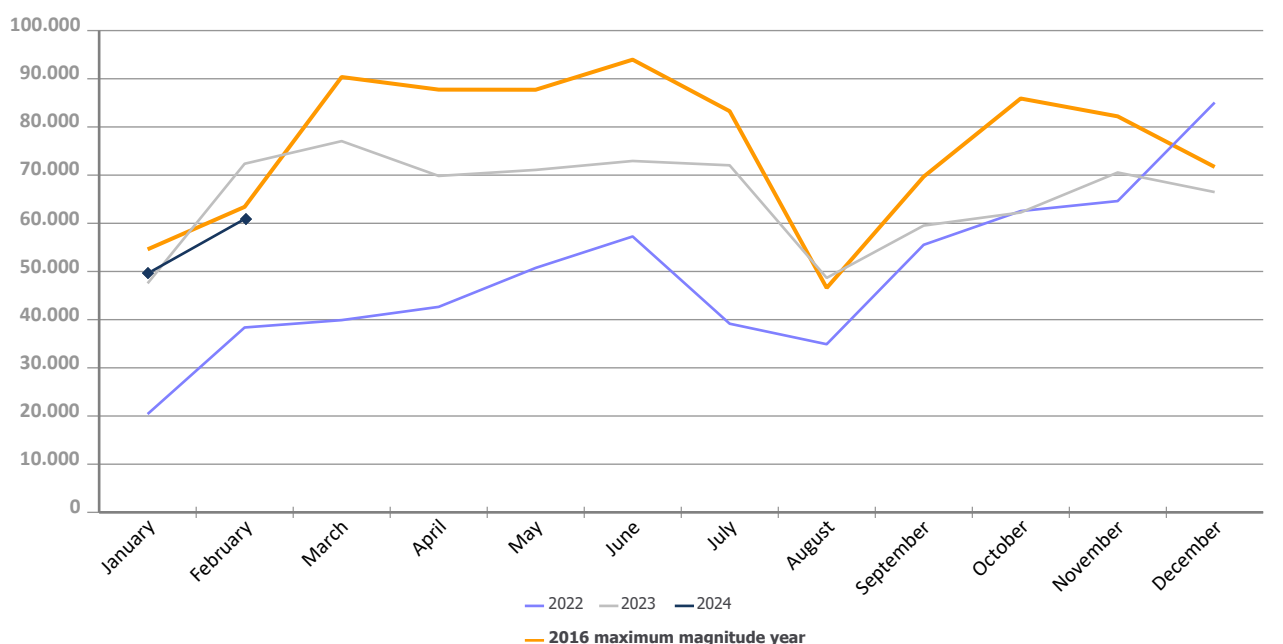


AUTOMOBILE TRAFFIC

Total automobile traffic (units)	Monthly accumulated				% 24-23 accum. January	% 23-22 accum. December
	2023	2024	Diff. 24-23	%		
Automobile traffic by navigation and operation	119.898	110.469	-9.429	-7,9%	4,3%	33,7%
Domestic	14.686	13.406	-1.280	-8,7%	-28,1%	21,5%
Loaded	12.685	11.833	-852	-6,7%	-23,9%	25,7%
Unloaded	2.001	1.573	-428	-21,4%	-45,4%	5,0%
Transit	0	0	0			5200,0%
Foreign	105.212	97.063	-8.149	-7,7%	10,2%	35,8%
Loaded	48.862	53.127	4.265	8,7%	25,5%	25,8%
Unloaded	40.924	26.920	-14.004	-34,2%	-3,6%	47,5%
Transit	15.426	17.016	1.590	10,3%	6,7%	44,5%

Monthly automobile traffic (u)	Monthly		Accumulated		%	
	2023	2024	2023	2024	Monthly	Accumulated
January	47.534	49.586	47.534	49.586	4,3%	4,3%
February	72.364	60.883	119.898	110.469	-15,9%	-7,9%
March	77.057		196.955			
April	69.834		266.789			
May	71.083		337.872			
June	72.935		410.807			
July	72.037		482.844			
August	48.671		531.515			
September	59.527		591.042			
October	62.244		653.286			
November	70.552		723.838			
December	66.480		790.318			

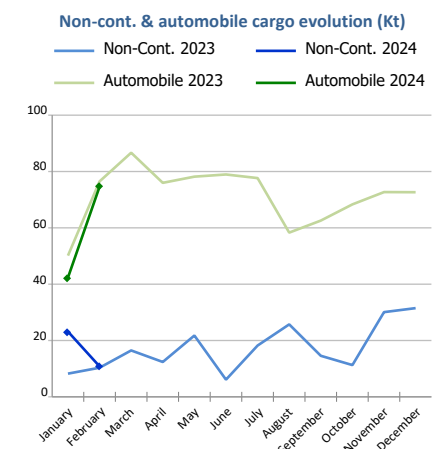
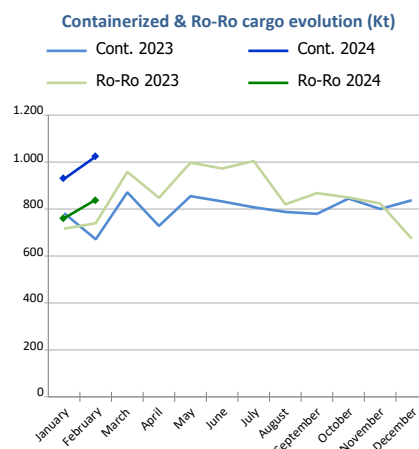
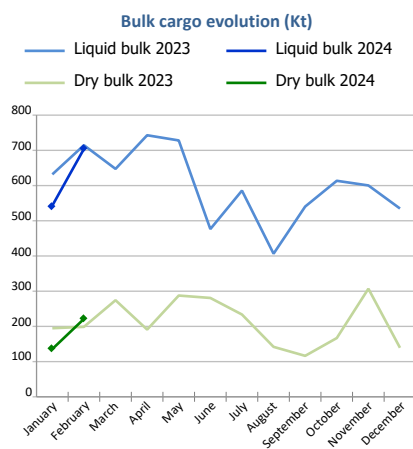
Evolution of monthly automobile traffic (u)



SHORT SEA SHIPPING (SSS)

SSS Goods classification

Goods classification. Tonnes	Monthly accumulated		%	% of total port traffic
	2023	2024		
Liquid bulk	1.346.426	1.247.341	-7,4%	69,8%
Dry bulk	393.648	357.024	-9,3%	52,0%
Containerized cargo	1.453.661	1.952.403	34,3%	32,3%
Ro-Ro	1.455.811	1.600.742	10,0%	99,5%
Non-containerized cargo	18.576	33.972	82,9%	52,2%
Automobile	126.626	116.971	-7,6%	70,5%
Total	4.794.748	5.308.452	10,7%	51,2%



SSS General Cargo	Spanish Islands			SSS Remainder			TOTAL		
	2023	2024	%	2023	2024	%	2023	2024	%
Containerized cargo	134.031	154.856	15,5%	1.319.630	1.797.546	36,2%	1.453.661	1.952.403	34,3%
O/D	131.483	148.708	13,1%	456.242	614.500	34,7%	587.725	763.207	29,9%
Transit	2.548	6.149	141,3%	863.388	1.183.047	37,0%	865.936	1.189.195	37,3%
Ro-Ro	744.592	818.234	9,9%	711.219	782.507	10,0%	1.455.811	1.600.742	10,0%
O/D	744.592	818.222	9,9%	666.090	705.881	6,0%	1.410.682	1.524.103	8,0%
Transit	0	12		45.129	76.627	69,8%	45.129	76.639	69,8%
Non-cont. cargo	72	111	53,7%	18.504	33.860	83,0%	18.576	33.972	82,9%
O/D	72	111	53,7%	18.185	33.245	82,8%	18.257	33.356	82,7%
Transit	0	0	0,0%	319	616	92,9%	319	616	92,9%
Automobile	22.213	19.467	-12,4%	104.414	97.503	-6,6%	126.626	116.971	-7,6%
O/D	22.183	19.467	-12,2%	87.587	78.973	-9,8%	109.770	98.441	-10,3%
Transit	30	0		16.826	18.530	10,1%	16.856	18.530	9,9%



Short Sea Shipping (SSS):

The transport of cargo/goods and passengers between ports situated in the European Union or between these ports and non-European ports with a coastline in seas bordering Europe. This applies to cargo either originating from or is destined for these countries (in accordance with the European Shortsea Network).

Motorways of the sea (MoS):

Short Sea Shipping services as an alternative to road transport and which fulfill the following criteria: minimum frequency of 3 calls per week and calling at a maximum of 3 different ports.

General cargo:

Including containerized cargo, non-containerized cargo, Ro-Ro and automobiles.

Containerized cargo:

Excluding container cargo by Ro-Ro.

Non-containerized cargo:

General non-containerized goods other than Ro-Ro and excluding automobiles.

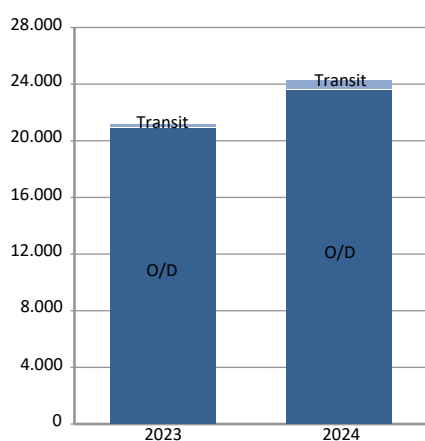
Ro-Ro:

General cargo carried in UTI's. Excluding automobiles.

SHORT SEA SHIPPING (SSS)

SSS General cargo	Spanish Islands			SSS Remainder			TOTAL		
	2023	2024	%	2023	2024	%	2023	2024	%
Containerized cargo. TEU	21.130	24.280	14,9%	124.444	174.851	40,5%	145.573	199.131	36,8%
O/D	20.877	23.536	12,7%	55.992	81.182	45,0%	76.868	104.718	36,2%
Full	12.664	14.423	13,9%	31.797	42.668	34,2%	44.461	57.091	28,4%
Empty	8.213	9.113	11,0%	24.195	38.514	59,2%	32.408	47.627	47,0%
Transit	253	744	193,9%	68.452	93.670	36,8%	68.705	94.413	37,4%
Full	201	540	168,4%	62.001	87.387	40,9%	62.202	87.926	41,4%
Empty	52	204	292,3%	6.452	6.283	-2,6%	6.504	6.487	-0,3%
Ro-Ro. UTI	33.382	36.589	9,6%	24.274	26.919	10,9%	57.656	63.508	10,1%
Full	21.141	23.475	11,0%	22.462	24.639	9,7%	43.603	48.114	10,3%
Empty	12.241	13.114	7,1%	1.812	2.280	25,8%	14.053	15.394	9,5%
Automobile units	14.699	13.391	-8,9%	72.721	69.861	-3,9%	87.420	83.252	-4,8%
O/D	14.686	13.391	-8,8%	60.898	57.403	-5,7%	75.584	70.794	-6,3%
Transit	13			11.823	12.458	5,4%	11.836	12.458	5,3%

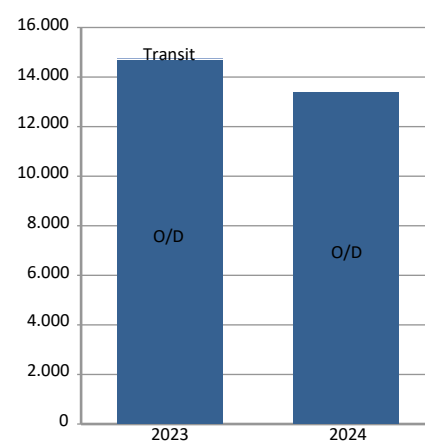
Cont. TEU (Spanish Islands)



Ro-Ro. UTI (Spanish Islands)

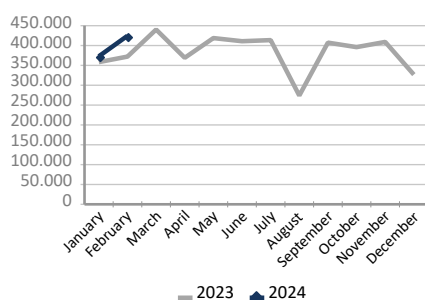


Automobile. Units (Spanish Islands)

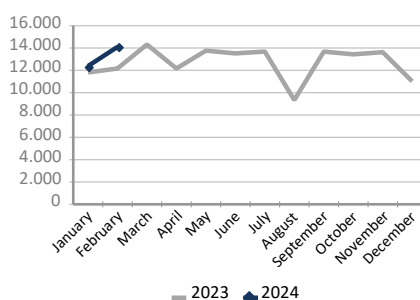


Motorways of the Sea (MoS)	EU			Non-EU			TOTAL		
	2023	2024	%	2023	2024	%	2023	2024	%
Tonnes	720.822	795.867	10,4%	9.568	1.508	-84,2%	730.391	797.375	9,2%
Loaded	373.207	436.152	16,9%	4.933	1.292	-73,8%	378.140	437.444	15,7%
Unloaded	347.615	359.716	3,5%	4.635	216	-95,3%	352.251	359.932	2,2%
UTI	23.533	26.423	12,3%	446	59	-86,8%	23.979	26.482	10,4%
Loaded	11.718	13.878	18,4%	248	51	-79,4%	11.966	13.929	16,4%
Unloaded	11.815	12.545	6,2%	198	8	-96,0%	12.013	12.553	4,5%
Automobile units	19.046	20.960	10,0%	67	19	-71,6%	19.113	20.979	9,8%
Loaded	18.049	20.528	13,7%	62	19	-69,4%	18.111	20.547	13,5%
Unloaded	997	432	-56,7%	5	0		1.002	432	-56,9%

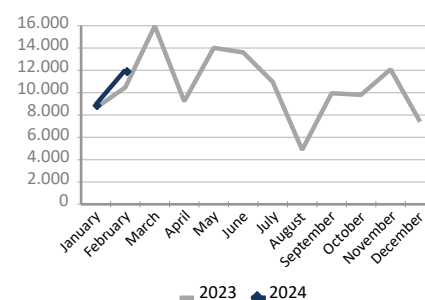
MoS. Tonnes



MoS. UTI



MoS. Automobile units



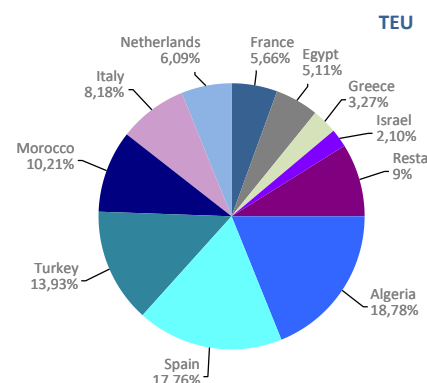
UTI: All those means of unitization, self-propelled or otherwise, that are directly or indirectly used as a means of land transport (e.g. trailers, platforms, trucks, freezer trucks, etc.) are considered as UTI. Containers are not considered to be included, except those that are handled by an equipment transport of the own terminal.

SHORT SEA SHIPPING (SSS)

SSS Ranking countries by mode of packaging

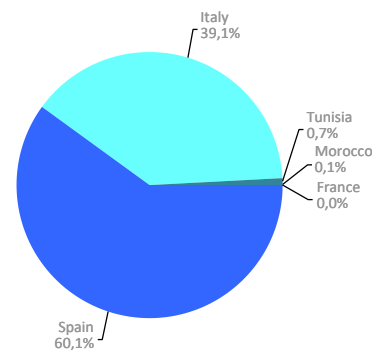
Containerized cargo. TEU	Monthly accumulated				% of total 2024
	2023	2024	Diff. 24-23	%	
Total	145.573	199.131	53.558	36,8%	100%
Algeria	28.725	37.394	8.669	30,2%	18,8%
Spain	28.880	35.374	6.494	22,5%	17,8%
Turkey	20.109	27.746	7.637	38,0%	13,9%
Morocco	16.543	20.322	3.780	22,8%	10,2%
Italy	10.701	16.292	5.591	52,2%	8,2%
Netherlands	102	12.128	12.026	11790,2%	6,1%
France	13.962	11.278	-2.684	-19,2%	5,7%
Egypt	7.561	10.167	2.606	34,5%	5,1%
Greece	4.605	6.518	1.913	41,5%	3,3%
Israel	2.857	4.187	1.330	46,6%	2,1%
Remainder	11.531	17.727	6.197	53,7%	8,9%

Main countries



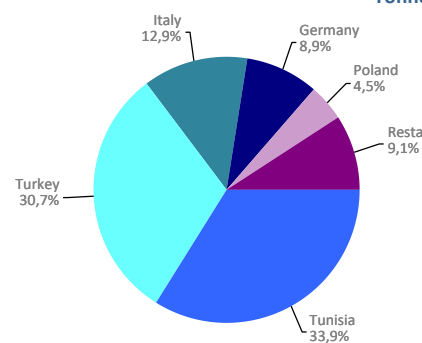
Ro-Ro. UTI	Monthly accumulated				% of total 2024
	2023	2024	Diff. 24-23	%	
Total	57.656	63.508	5.852	10,1%	100%
Spain	34.373	38.161	3.788	11,0%	60,1%
Italy	22.565	24.847	2.282	10,1%	39,1%
Tunisia	271	417	146	53,9%	0,7%
Morocco	446	73	-373	-83,6%	0,1%
France	0	10	10	0,0%	0,0%
Remainder	1	0	-1		0,0%

UTI



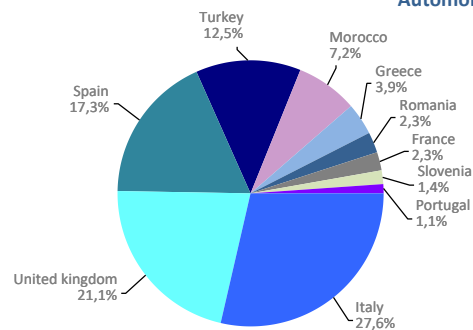
Non-cont. cargo. Tonnes	Monthly accumulated				% of total 2024
	2023	2024	Diff. 24-23	%	
Total	18.576	33.972	15.395	82,9%	100%
Tunisia	49	11.504	11.455	23377,7%	33,9%
Turkey	281	10.446	10.165	3617,8%	30,7%
Italy	4.858	4.372	-487	-10,0%	12,9%
Germany	50	3.032	2.982	5964,1%	8,9%
Poland	0	1.525	1.525	0,0%	4,5%
Remainder	13.338	3.093	-10.245	-76,8%	9,1%

Tonnes



Automobile. Units	Monthly accumulated				% of total 2024
	2023	2024	Diff. 24-23	%	
Total	87.420	83.252	-4.168	-4,8%	100%
Italy	21.690	23.011	1.321	6,1%	27,6%
United kingdom	14.143	17.540	3.397	24,0%	21,1%
Spain	17.380	14.390	-2.990	-17,2%	17,3%
Turkey	5.978	10.391	4.413	73,8%	12,5%
Morocco	5.657	5.958	301	5,3%	7,2%
Greece	2.835	3.282	447	15,8%	3,9%
Romania	3.147	1.927	-1.220	-38,8%	2,3%
France	7.037	1.894	-5.143	-73,1%	2,3%
Slovenia	147	1.197	1.050	714,3%	1,4%
Portugal	1.384	947	-437	-31,6%	1,1%
Remainder	8.022	2.715	-5.307	-66,2%	3,3%

Automobile



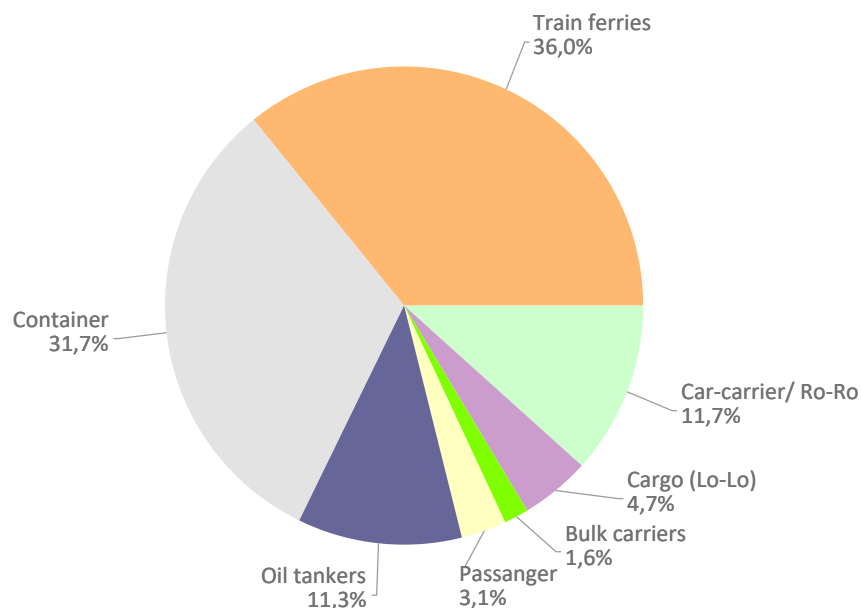
VESSELS TRAFFIC

Vessels traffic	Monthly accumulated		
	2023	2024	%
Number of calls	1.245	1.243	-0,2%
Tonnage	47.160.873	48.124.439	2,0%
Average tonnes	37.880	38.716	2,2%

Type of vessels	Monthly accumulated					
	2023		2024		%	
	Calls	GT	Calls	GT	Calls	GT
Total	1.245	47.160.873	1.243	48.124.439	-0,2%	2,0%
Car-carrier/ Ro-Ro	142	7.446.728	146	7.688.598	2,8%	3,2%
Cargo (Lo-Lo)	46	244.927	58	584.987	26,1%	138,8%
Bulk carriers	27	754.166	20	613.297	-25,9%	-18,7%
Passanger	46	6.113.893	38	5.327.502	-17,4%	-12,9%
Oil tankers	169	3.139.529	140	2.306.498	-17,2%	-26,5%
Container	337	14.617.351	394	18.095.150	16,9%	23,8%
Train ferries	478	14.844.279	447	13.508.407	-6,5%	-9,0%

Type of vessels (monthly accumulated 2024)	Domestic		Foreign	
	Calls	GT	Calls	GT
Total	442	10.263.124	801	37.861.315
Car-carrier/ Ro-Ro	11	246.331	135	7.442.267
Cargo (Lo-Lo)	5	24.139	53	560.848
Bulk carriers	1	2.453	19	610.844
Passanger	2	275.029	36	5.052.473
Oil tankers	17	179.801	123	2.126.697
Container	54	562.663	340	17.532.487
Train ferries	352	8.972.708	95	4.535.699

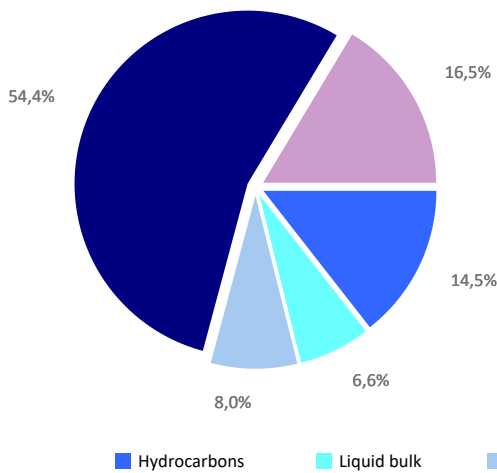
Distribution by type of vessel



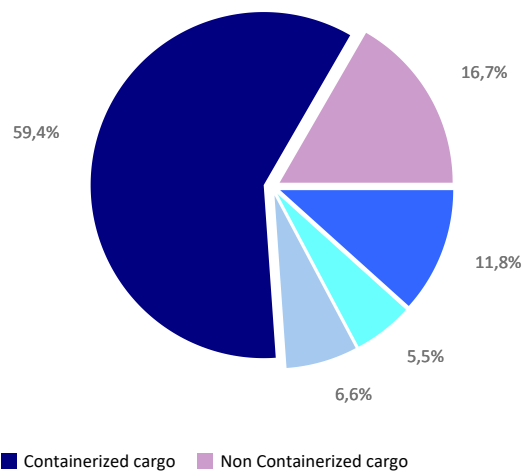
GOODS TRAFFIC

Type of packaging and navigation	Monthly accumulated 2023			Monthly accumulated 2024			%
	Domestic	Foreign	Total	Domestic	Foreign	Total	
Hydrocarbons	169.143	1.250.195	1.419.338	95.027	1.123.379	1.218.406	-14,2%
Incoming	155.566	956.398	1.111.964	52.652	940.654	993.307	-10,7%
Outgoing	13.577	293.797	307.374	42.374	182.724	225.099	-26,8%
Other liquid bulk	40.827	600.589	641.416	97.444	471.407	568.851	-11,3%
Incoming	28.024	417.822	445.846	70.782	321.585	392.368	-12,0%
Outgoing	12.803	182.766	195.569	26.662	149.822	176.483	-9,8%
Dry bulk	14.343	768.301	782.644	14.388	672.389	686.777	-12,2%
Incoming	9.079	417.129	426.208	14.388	450.871	465.259	9,2%
Outgoing	5.264	351.172	356.436	0	221.518	221.518	-37,9%
Containerized cargo	205.901	5.106.458	5.312.359	219.903	5.940.635	6.160.539	16,0%
Incoming	67.634	2.453.710	2.521.344	71.635	2.865.311	2.936.946	16,5%
Outgoing	138.266	2.652.748	2.791.015	148.268	3.075.325	3.223.592	15,5%
Non-containerized cargo	712.756	900.515	1.613.270	782.070	947.020	1.729.090	7,2%
Incoming	231.022	471.405	702.427	260.310	469.124	729.434	3,8%
Outgoing	481.734	429.110	910.844	521.760	477.896	999.656	9,8%
Total general cargo	918.656	6.006.973	6.925.629	1.001.973	6.887.655	7.889.628	13,9%
Incoming	298.656	2.925.115	3.223.771	331.945	3.334.435	3.666.380	13,7%
Outgoing	620.000	3.081.858	3.701.858	670.028	3.553.221	4.223.249	14,1%
Total throughput (tonnes)	1.142.970	8.626.057	9.769.027	1.208.832	9.154.830	10.363.662	6,1%
Incoming	491.325	4.716.464	5.207.790	469.768	5.047.546	5.517.314	5,9%
Outgoing	651.644	3.909.593	4.561.237	739.064	4.107.284	4.846.349	6,3%
Container traffic (TEU)	34.317	480.184	514.501	35.529	567.222	602.751	17,2%
Incoming	19.306	242.872	262.178	19.527	285.929	305.456	16,5%
Outgoing	15.011	237.313	252.324	16.002	281.294	297.295	17,8%

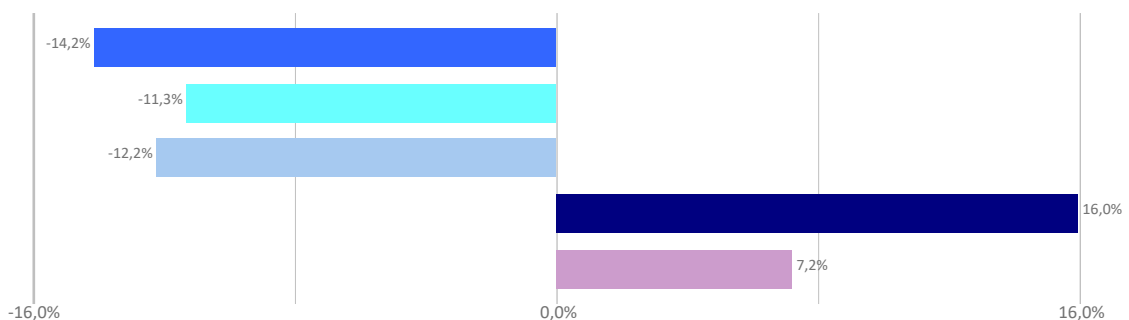
Distribution by type of packaging 2023



Distribution by type of packaging 2024



Annual growth by type of packaging



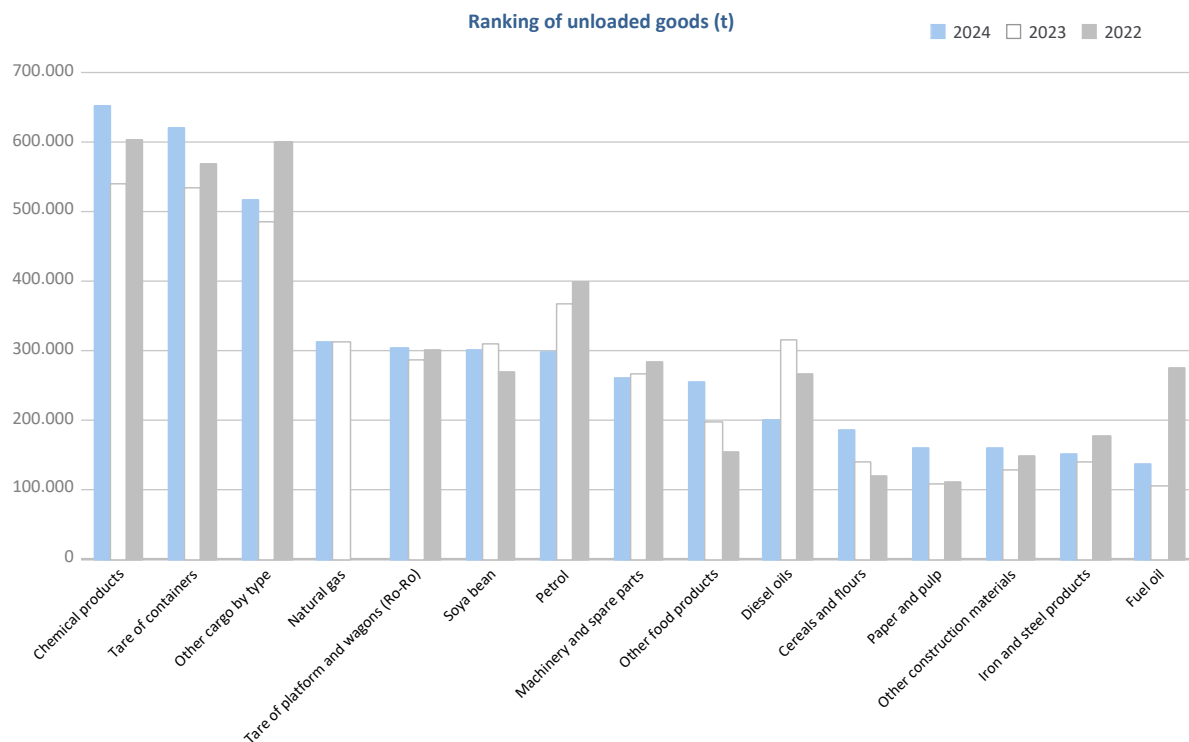
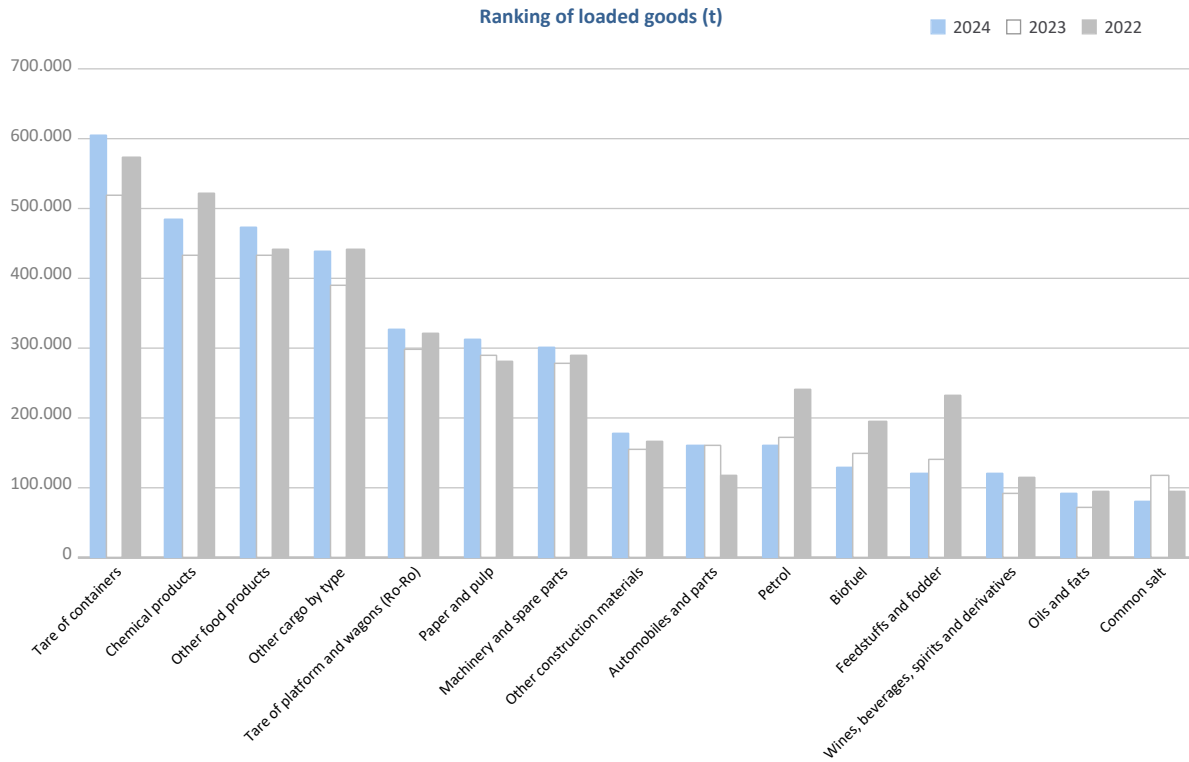
GOODS TRAFFIC

Goods by classification 4.3.7.	Monthly accumulated				% of total accum. 2024
	2023	2024	Diff. 24-23	%	
Tonnes	9.769.027	10.363.662	594.635	6,1%	100%
Energy	1.750.510	1.476.080	-274.430	-15,7%	14,2%
Crude oil	0	50	50	0,0%	0,0%
Fuel oil	108.281	146.978	38.696	35,7%	1,4%
Diesel oils	361.078	229.404	-131.674	-36,5%	2,2%
Petrol	538.022	456.912	-81.111	-15,1%	4,4%
Other petroleum products	21.851	54.364	32.513	148,8%	0,5%
Petroleum fuel gasses	9.288	10.367	1.079	11,6%	0,1%
Coal	11.149	12.083	934	8,4%	0,1%
Natural gas	403.089	340.606	-62.484	-15,5%	3,3%
Biofuel	297.752	225.318	-72.434	-24,3%	2,2%
Iron, steel and metallurgical products	454.856	494.571	39.715	8,7%	4,8%
Iron ore	814	2.041	1.227	150,7%	0,0%
Other minerals and metallic waste	68.514	97.827	29.313	42,8%	0,9%
Scrap iron	71.612	101.507	29.895	41,7%	1,0%
Iron and steel products	213.558	227.824	14.266	6,7%	2,2%
Other metallurgical products	100.358	65.372	-34.986	-34,9%	0,6%
Non-metallic minerals	173.526	191.557	18.032	10,4%	1,8%
Common salt	118.021	80.922	-37.099	-31,4%	0,8%
Other non-metallic minerals	55.505	110.635	55.130	99,3%	1,1%
Fertilizers	111.769	111.516	-253	-0,2%	1,1%
Potashes	79.213	75.799	-3.414	-4,3%	0,7%
Natural/artificial fertilizer	32.556	35.717	3.161	9,7%	0,3%
Chemicals	972.945	1.136.530	163.584	16,8%	11,0%
Chemical products	972.945	1.136.530	163.584	16,8%	11,0%
Construction materials	455.632	419.194	-36.437	-8,0%	4,0%
Asphalt	520	1.664	1.144	220,1%	0,0%
Cement and clinker	172.309	81.965	-90.344	-52,4%	0,8%
Other construction materials	282.803	335.566	52.763	18,7%	3,2%
Agriculture, livestock and food	2.032.756	2.279.866	247.110	12,2%	22,0%
Cereals and flours	161.428	238.775	77.347	47,9%	2,3%
Soya bean	337.979	351.158	13.180	3,9%	3,4%
Fruits, vegetables, pulses	78.096	139.069	60.973	78,1%	1,3%
Wines, beverages, spirits and derivatives	110.387	157.286	46.899	42,5%	1,5%
Canned goods	58.802	47.920	-10.882	-18,5%	0,5%
Tobacco, coffee, cocoa	140.178	169.784	29.606	21,1%	1,6%
Oils and fats	255.497	190.804	-64.694	-25,3%	1,8%
Other food products	628.465	728.269	99.804	15,9%	7,0%
Frozen fish	104.074	92.501	-11.573	-11,1%	0,9%
Feedstuffs and fodder	157.849	164.299	6.450	4,1%	1,6%
Other cargo	1.869.538	2.102.438	232.900	12,5%	20,3%
Timber	47.406	109.487	62.081	131,0%	1,1%
Paper and pulp	399.704	473.203	73.499	18,4%	4,6%
Machinery and spare parts	546.921	563.497	16.576	3,0%	5,4%
Other cargo by type	875.507	956.251	80.744	9,2%	9,2%
Vehicles and transport parts	1.947.495	2.151.910	204.415	10,5%	20,8%
Automobiles and parts	308.190	293.069	-15.121	-4,9%	2,8%
Tare of platform and wagons (Ro-Ro)	585.769	631.402	45.632	7,8%	6,1%
Tare of containers	1.053.536	1.227.440	173.904	16,5%	11,8%

GOODS TRAFFIC

Goods by classification 4.3.7.

Ranking of goods (tonnes)

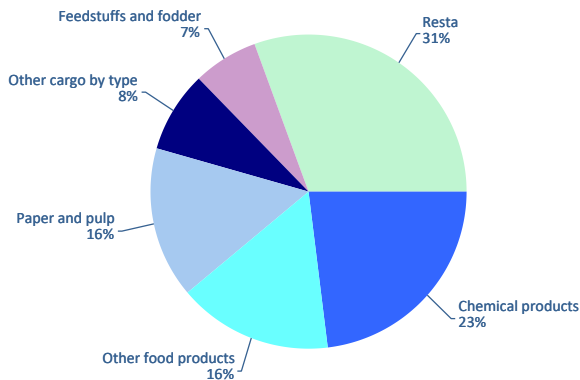


GOODS TRAFFIC

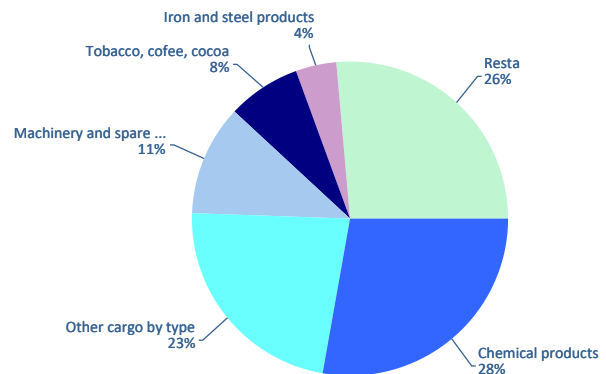
Containerized goods by classification 4.3.7. (Tares & transits not included)

Containerized goods classification	Loaded			Unloaded			Total monthly accumulated		
	2023	2024	%	2023	2024	%	2023	2024	%
Total tonnes (tares & transits not included)	1.272.024	1.256.696	-1,2%	945.778	831.193	-12,1%	2.217.802	2.087.889	-5,9%
Chemical products	232.894	288.071	23,7%	234.712	230.571	-1,8%	467.606	518.642	10,9%
Other cargo by type	95.716	102.876	7,5%	222.703	189.296	-15,0%	318.419	292.171	-8,2%
Paper and pulp	222.896	196.927	-11,7%	23.212	29.111	25,4%	246.108	226.038	-8,2%
Other food products	225.201	200.471	-11,0%	16.780	8.633	-48,6%	241.982	209.104	-13,6%
Machinery and spare parts	73.089	70.020	-4,2%	136.418	95.333	-30,1%	209.508	165.353	-21,1%
Feedstuffs and fodder	120.892	83.445	-31,0%	8.607	12.383	43,9%	129.499	95.828	-26,0%
Tobacco, coffee, cocoa	12.670	12.350	-2,5%	60.937	62.509	2,6%	73.607	74.860	1,7%
Other construction materials	43.014	44.468	3,4%	37.569	28.658	-23,7%	80.583	73.126	-9,3%
Wines, beverages, spirits and derivatives	55.781	58.266	4,5%	5.514	5.662	2,7%	61.295	63.927	4,3%
Iron and steel products	28.686	25.085	-12,6%	41.753	33.530	-19,7%	70.439	58.614	-16,8%
Automobiles and parts	20.206	19.394	-4,0%	27.161	31.023	14,2%	47.368	50.417	6,4%
Other minerals and metallic waste	27.346	31.528	15,3%	3.551	3.679	3,6%	30.896	35.207	14,0%
Oils and fats	20.405	27.793	36,2%	8.135	5.688	-30,1%	28.540	33.481	17,3%
Other non-metallic minerals	14.754	18.683	26,6%	10.792	12.257	13,6%	25.546	30.940	21,1%
Other metallurgical products	13.911	11.623	-16,4%	29.587	18.502	-37,5%	43.497	30.126	-30,7%
Fruits, vegetables, pulses	5.592	5.454	-2,5%	19.014	21.316	12,1%	24.607	26.770	8,8%
Canned goods	12.213	10.393	-14,9%	17.621	10.940	-37,9%	29.834	21.333	-28,5%
Biofuel	12.387	16.339	31,9%	2.937	3.374	14,9%	15.324	19.713	28,6%
Natural/artificial fertilizer	6.023	7.022	16,6%	10.708	3.682	-65,6%	16.731	10.704	-36,0%
Cereals and flours	9.042	6.053	-33,1%	5.741	3.965	-30,9%	14.783	10.018	-32,2%
Scrap iron	3.072	3.771	22,8%	3.990	4.119	3,2%	7.061	7.890	11,7%
Common salt	4.491	5.853	30,3%	504	331	-34,4%	4.995	6.184	23,8%
Frozen fish	1.294	405	-68,7%	5.930	5.499	-7,3%	7.224	5.904	-18,3%
Other petroleum products	3.376	3.482	3,1%	1.806	1.577	-12,7%	5.181	5.058	-2,4%
Timber	1.403	967	-31,1%	4.062	3.429	-15,6%	5.465	4.396	-19,6%
Fuel oil	936	1.342	43,4%	532	1.764	231,8%	1.468	3.106	111,6%
Cement and clinker	3.065	2.589	-15,5%	0	0		3.065	2.589	-15,5%
Coal	816	234	-71,4%	4.659	2.278	-51,1%	5.475	2.512	-54,1%
Soya bean	0	2		102	1.263	1144,2%	102	1.265	1146,1%
Petroleum fuel gasses	530	901	70,2%	74	104	40,3%	604	1.005	66,5%
Asphalt	307	837	172,9%	0	0		307	837	172,9%
Potashes	18	52	196,0%	403	642	59,3%	420	694	65,0%
Crude oil	0	0		0	50		0	50	
Petrol	0	3		0	22		0	25	
Iron ore	0	0		264	2	-99,1%	264	2	-99,1%

Distribution of main goods Loaded 2024



Distribution of main goods Unloaded 2024

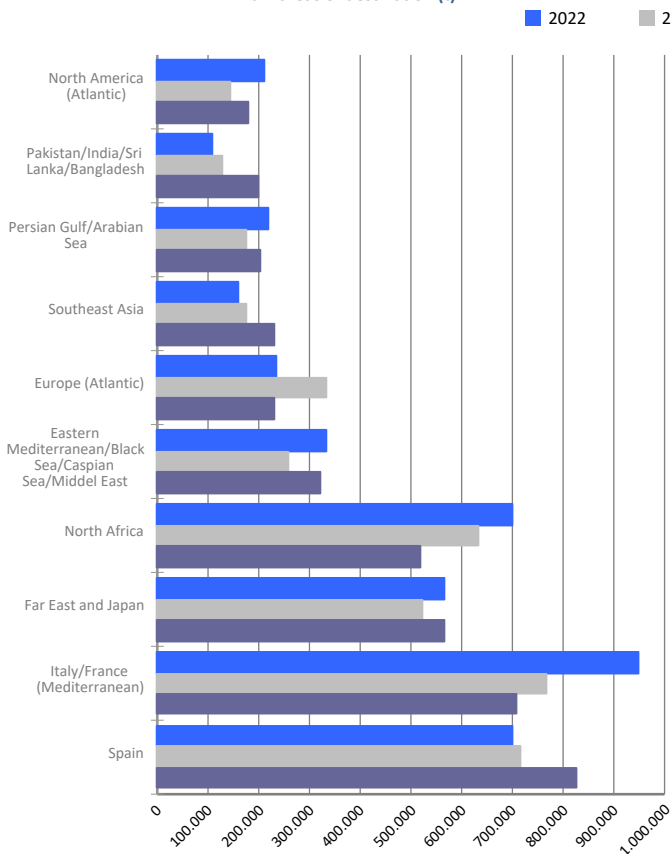


MARITIME TRAFFIC BY ORIGIN/DESTINATION

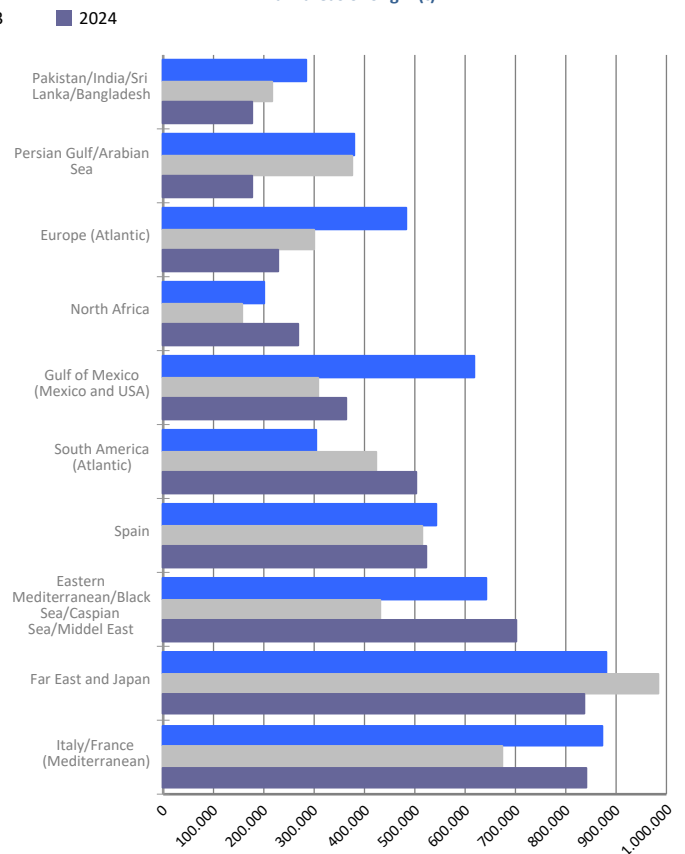
Geographical areas. Tonnes

Geographical areas	Monthly accumulated				% of total accum. 2024
	2023	2024	Diff. 24-23	%	
Tonnes	9.769.027	10.363.662	594.635	6,1%	100%
Italy/France (Mediterranean)	1.440.718	1.547.555	106.837	7,4%	14,9%
Far East and Japan	1.507.966	1.403.587	-104.379	-6,9%	13,5%
Spain	1.232.259	1.348.206	115.947	9,4%	13,0%
Eastern Mediterranean/Black Sea/Caspian Sea/Middel	691.182	1.024.350	333.168	48,2%	9,9%
North Africa	792.410	787.763	-4.647	-0,6%	7,6%
South America (Atlantic)	506.691	574.960	68.269	13,5%	5,5%
Gulf of Mexico (Mexico and USA)	477.973	486.865	8.892	1,9%	4,7%
Europe (Atlantic)	633.981	460.822	-173.158	-27,3%	4,4%
Persian Gulf/Arabian Sea	552.063	383.302	-168.761	-30,6%	3,7%
Pakistan/India/Sri Lanka/Bangladesh	348.251	376.654	28.403	8,2%	3,6%
Southeast Asia	472.031	374.554	-97.477	-20,7%	3,6%
North America (Atlantic)	255.661	328.262	72.601	28,4%	3,2%
West Africa	154.309	297.693	143.384	92,9%	2,9%
Red Sea	120.034	262.594	142.560	118,8%	2,5%
Central America and Caribbean	151.299	171.405	20.105	13,3%	1,7%
Canada (Atlantic) and Great Lakes	168.963	167.303	-1.660	-1,0%	1,6%
Unknown area (Tare of empty containers)	80.858	125.438	44.580	55,1%	1,2%
South-Eastern Africa/Indian Ocean	61.800	103.671	41.871	67,8%	1,0%
South America (Pacific)	69.727	73.485	3.759	5,4%	0,7%
North America (Pacific)	12.373	35.493	23.119	186,8%	0,3%
Australia, New Zealand/Pacific Islands	38.478	29.699	-8.779	-22,8%	0,3%

Main areas of destination (t)



Main areas of origin (t)

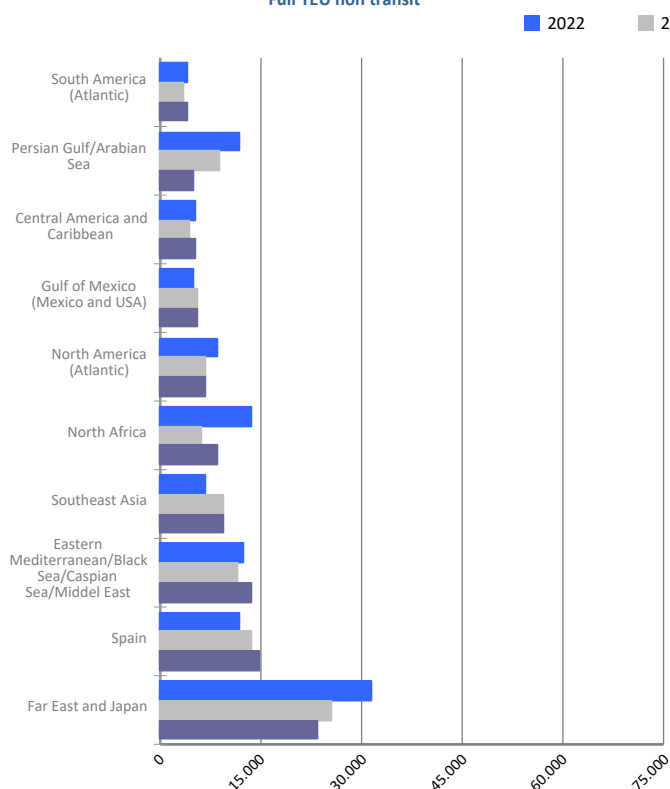


MARITIME TRAFFIC BY ORIGIN/DESTINATION

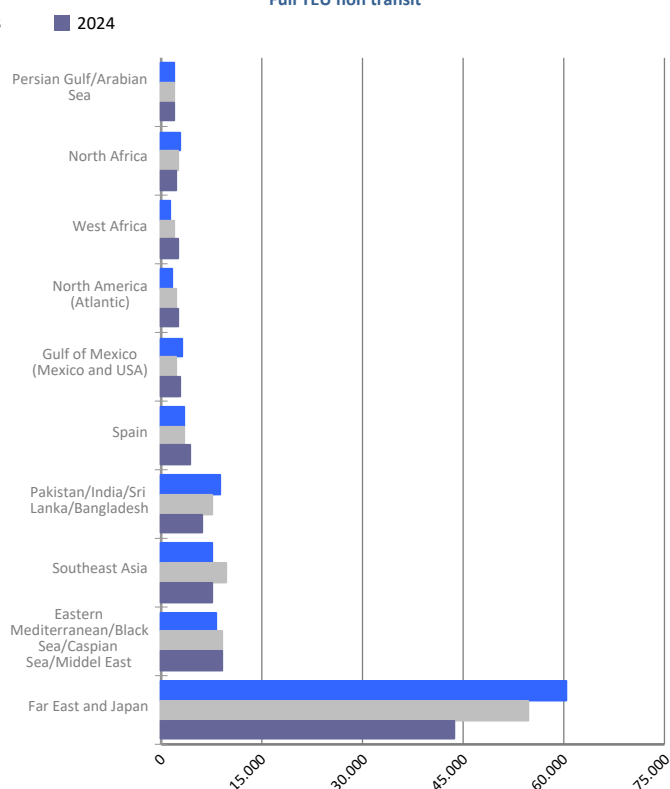
Geographical areas. Full TEU non transit

Geographical areas	Monthly accumulated				% of total accum. 2024
	2023	2024	Diff. 24-23	%	
Full TEU non transit	225.070	211.041	-14.029	-6,2%	100%
Far East and Japan	80.488	67.123	-13.365	-16,6%	31,8%
Eastern Mediterranean/Black Sea/Caspian Sea/Middel	20.486	22.656	2.170	10,6%	10,7%
Spain	17.266	19.365	2.099	12,2%	9,2%
Southeast Asia	19.268	17.289	-1.979	-10,3%	8,2%
North Africa	8.713	11.018	2.305	26,5%	5,2%
Pakistan/India/Sri Lanka/Bangladesh	13.839	9.948	-3.892	-28,1%	4,7%
North America (Atlantic)	9.106	9.106	0	0,0%	4,3%
Gulf of Mexico (Mexico and USA)	7.903	8.215	312	3,9%	3,9%
Persian Gulf/Arabian Sea	10.880	7.015	-3.865	-35,5%	3,3%
Central America and Caribbean	5.653	6.203	550	9,7%	2,9%
West Africa	4.820	5.647	827	17,1%	2,7%
South America (Atlantic)	4.743	5.556	813	17,1%	2,6%
Red Sea	4.905	4.645	-260	-5,3%	2,2%
South America (Pacific)	4.312	4.565	253	5,9%	2,2%
South-Eastern Africa/Indian Ocean	3.914	3.506	-408	-10,4%	1,7%
Italy/France (Mediterranean)	3.066	2.448	-618	-20,2%	1,2%
Canada (Atlantic) and Great Lakes	2.179	2.336	157	7,2%	1,1%
Australia, New Zealand/Pacific Islands	1.897	1.696	-201	-10,6%	0,8%
Europe (Atlantic)	665	1.364	700	105,3%	0,6%
North America (Pacific)	969	1.342	373	38,5%	0,6%

Main areas of destination
Full TEU non transit



Main areas of origin
Full TEU non transit

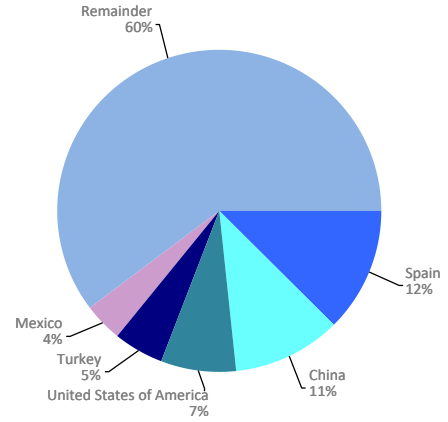


MARITIME TRAFFIC BY ORIGIN/DESTINATION

Ranking countries. Full TEU non transit

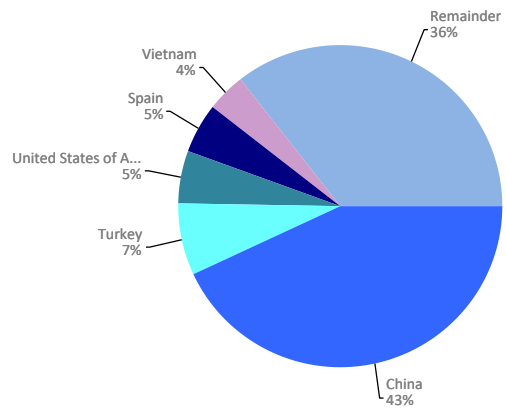
Loaded	Full TEU	% 24-23	% a/packaging
Spain	14.922	8,7%	12,4%
China	13.213	-4,6%	11,0%
United States of America	8.873	2,2%	7,4%
Turkey	6.102	5,1%	5,1%
Mexico	4.682	4,0%	3,9%
Morocco	4.599	69,6%	3,8%
Japan	4.279	-6,7%	3,6%
United Arab Emirates	3.243	-47,5%	2,7%
Saudi Arabia	3.061	-11,7%	2,5%
Israel	2.879	76,8%	2,4%
India	2.837	-46,3%	2,4%
Greece	2.644	25,6%	2,2%
Egypt	2.637	29,7%	2,2%
Vietnam	2.548	50,2%	2,1%
Korea (South)	2.539	-32,0%	2,1%
Remainder	41.260	0,7%	34,3%
TOTAL	120.318	-0,5%	100%

Main countries. Loaded



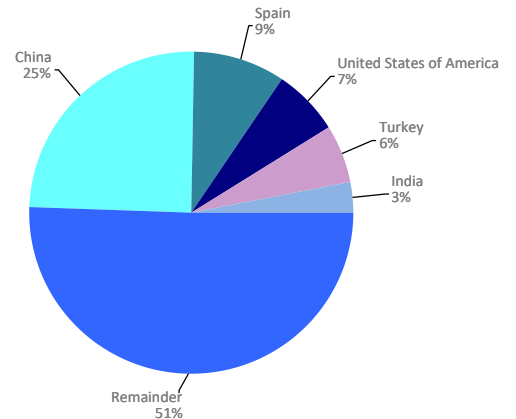
Unloaded	Full TEU	% 24-23	% a/packaging
China	39.136	-21,1%	43,1%
Turkey	6.388	4,1%	7,0%
United States of America	4.897	15,5%	5,4%
Spain	4.443	25,6%	4,9%
Vietnam	3.628	-18,0%	4,0%
India	3.543	-11,3%	3,9%
Korea (South)	2.670	-4,3%	2,9%
Saudi Arabia	2.015	15,0%	2,2%
Egypt	1.750	-20,3%	1,9%
Greece	1.640	14,5%	1,8%
Cote d'Ivoire	1.418	98,3%	1,6%
Brazil	1.260	28,4%	1,4%
Bangladesh	1.224	-49,3%	1,3%
Thailand	1.123	2,5%	1,2%
Cambodia	1.006	15,3%	1,1%
Remainder	14.584	-18,6%	16,1%
TOTAL	90.724	-12,9%	100%

Main countries. Unloaded



Total	Full TEU	% 24-23	% a/packaging
China	52.349	-17,5%	24,8%
Spain	19.365	12,2%	9,2%
United States of America	13.770	6,6%	6,5%
Turkey	12.490	4,6%	5,9%
India	6.380	-31,3%	3,0%
Vietnam	6.176	0,9%	2,9%
Mexico	5.444	-0,2%	2,6%
Korea (South)	5.209	-20,2%	2,5%
Japan	5.107	-10,5%	2,4%
Saudi Arabia	5.076	-2,7%	2,4%
Morocco	5.049	66,6%	2,4%
Egypt	4.387	3,7%	2,1%
Greece	4.284	21,1%	2,0%
United Arab Emirates	3.800	-43,4%	1,8%
Brazil	3.599	26,2%	1,7%
Remainder	58.558	-3,7%	27,7%
TOTAL	211.041	-6,2%	100%

Main countries. Total



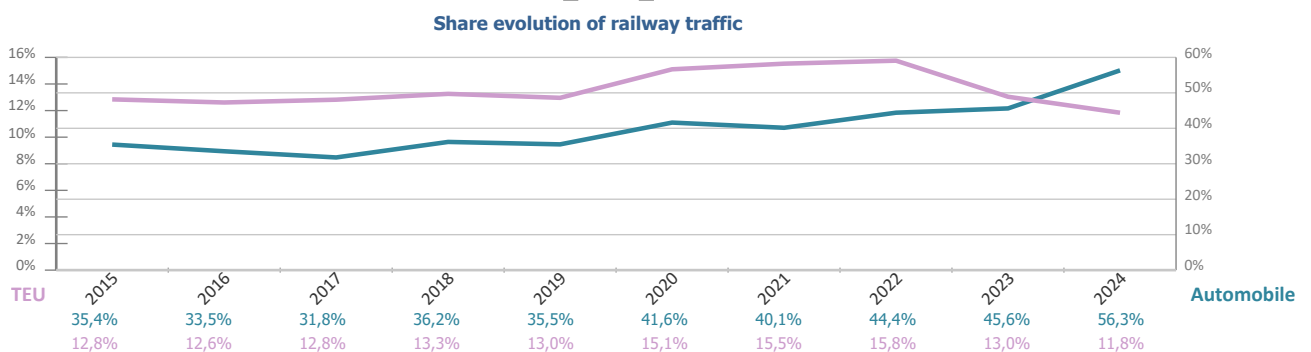
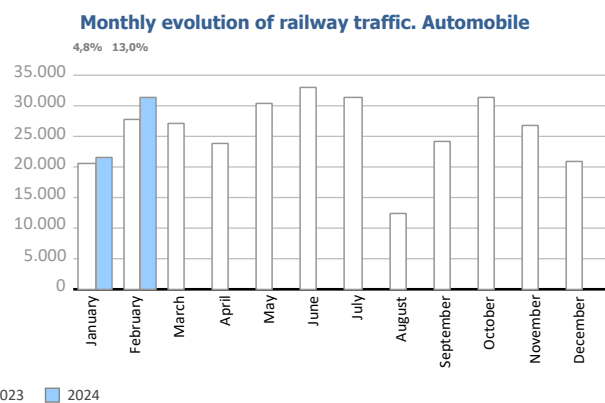
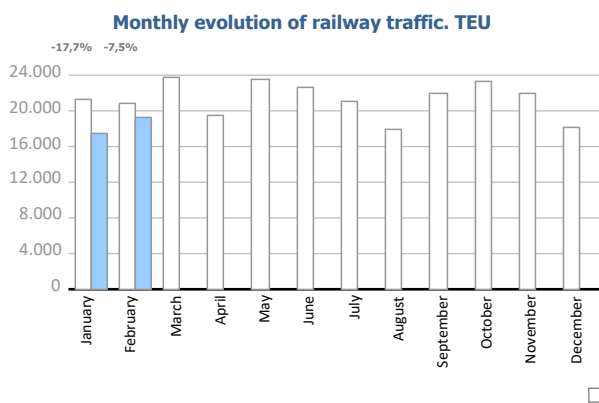
RAILWAY TRAFFIC

Monthly evolution of railway traffic. TEU

Monthly evolution of railway traffic	TEU 2023			TEU 2024			%		% of total port traffic 2024
	Loaded	Unloaded	Total	Loaded	Unloaded	Total	Monthly	Accumulated	
January	10.946	10.351	21.297	7.901	9.633	17.534	-17,7%	-17,7%	11,4%
February	10.012	10.850	20.862	8.751	10.545	19.296	-7,5%	-12,6%	12,2%
March	11.720	12.120	23.840						
April	9.632	9.846	19.478						
May	12.232	11.299	23.531						
June	11.297	11.397	22.694						
July	10.049	10.979	21.028						
August	8.856	9.030	17.886						
September	10.815	11.129	21.944						
October	11.031	12.246	23.277						
November	10.067	11.795	21.862						
December	8.192	9.931	18.122						
Total	124.847	130.971	255.818	16.652	20.178	36.830			11,8%

Monthly evolution of railway traffic. Automobile

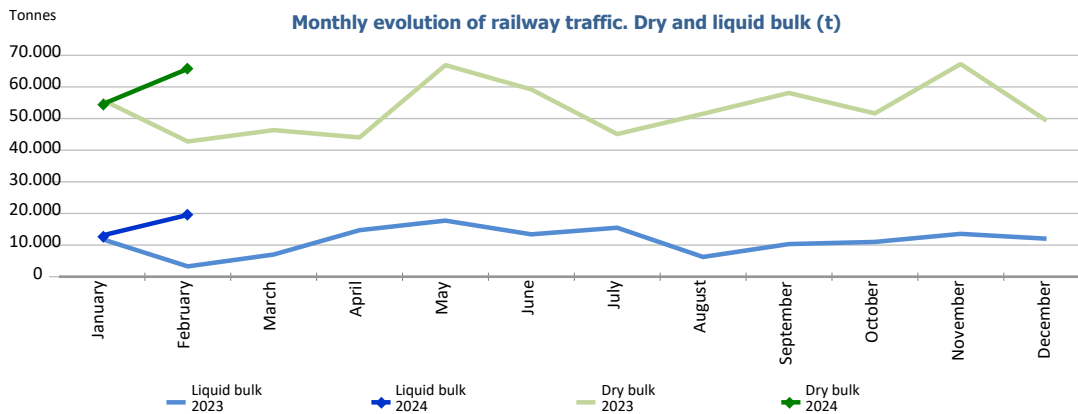
Monthly evolution of railway traffic	Automobile 2023			Automobile 2024			%		% of total port traffic 2024
	Loaded	Unloaded	Total	Loaded	Unloaded	Total	Monthly	Accumulated	
January	4.150	16.267	20.417	2.696	18.708	21.404	4,8%	4,8%	51,1%
February	5.096	22.553	27.649	4.150	27.099	31.249	13,0%	9,5%	60,6%
March	3.567	23.677	27.244						
April	4.515	19.415	23.930						
May	5.929	24.358	30.287						
June	5.878	27.021	32.899						
July	6.807	24.450	31.257						
August	1.982	10.394	12.376						
September	5.584	18.633	24.217						
October	6.117	25.138	31.255						
November	5.350	21.525	26.875						
December	3.150	17.854	21.004						
Total	58.125	251.285	309.410	6.846	45.807	52.653			56,3%



RAILWAY TRAFFIC

Monthly evolution of railway traffic. Dry and liquid bulk. Tonnes

Monthly evolution of railway traffic	Tonnes 2023			Tonnes 2024			%	
	Dry bulk	Liquid bulk	Total	Dry bulk	Liquid bulk	Total	Monthly	Accumulated
January	55.964	11.888	67.852	54.457	13.024	67.481	-0,5%	-0,5%
February	42.746	3.263	46.009	65.710	19.534	85.244	85,3%	34,1%
March	46.334	7.014	53.348					
April	44.027	14.701	58.728					
May	66.894	17.738	84.632					
June	59.200	13.398	72.598					
July	45.081	15.485	60.566					
August	51.511	6.251	57.762					
September	58.090	10.320	68.410					
October	51.617	10.995	62.612					
November	67.236	13.547	80.783					
December	49.345	12.016	61.361					
Total	638.045	136.616	774.661	120.167	32.558	152.725		



Railway traffic.

Railway gauge traffic (u)	Monthly accumulated		%	% of accumulated total 2024
	2023	2024		
Iberian gauge	1.184	1.126	-4,9%	62,3%
UIC	65	136	109,2%	7,5%
FGC	446	544	22,0%	30,1%
Total	1.695	1.806	6,5%	100%

