

Port of Barcelona traffic statistics

Accumulated data May 2024

Statistics Service

Index

Traffic indicators

Total traffic	3
Main indicators	4
Breakdown of total traffic	5
Breakdown of traffic in transit	6
Monthly evolution of traffic	7

Container traffic

TEU evolution	8
Container traffic (TEU)	9

Passenger traffic

Passenger traffic	10
Passenger classification	11

Automobile traffic

Automobile traffic	12
--------------------	----

Short Sea Shipping traffic (SSS)

SSS Goods classification	13
SSS General cargo and Motorways of the sea (MoS)	14
SSS Ranking countries	15

Vessel traffic

Vessel traffic	16
----------------	----

Goods traffic

Mode of packaging and navigation	17
Goods by classification 4.3.7.	18
Goods ranking	19
Containerized goods by classification 4.3.7.	20

Maritime traffic by origin/destination

Geographical areas. Tonnes	21
Geographical areas. Full TEU non transit	22
Ranquing countries. Full TEU non transit	23

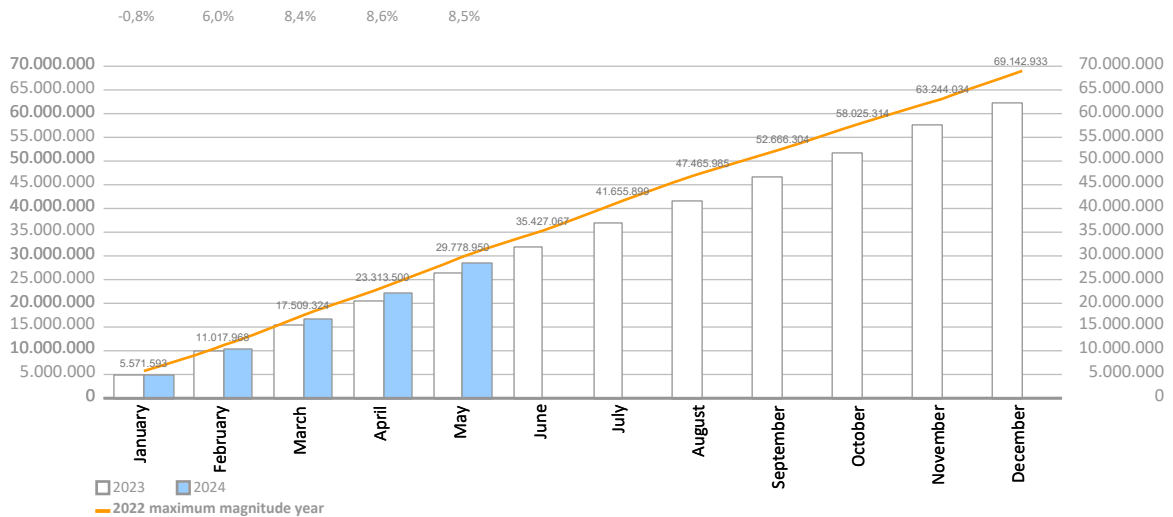
Railway traffic

Evolution of railway traffic (TEU and automobile)	24
Evolution of railway traffic (Solid and liquid bulk)	25
Railway gauge traffic	25

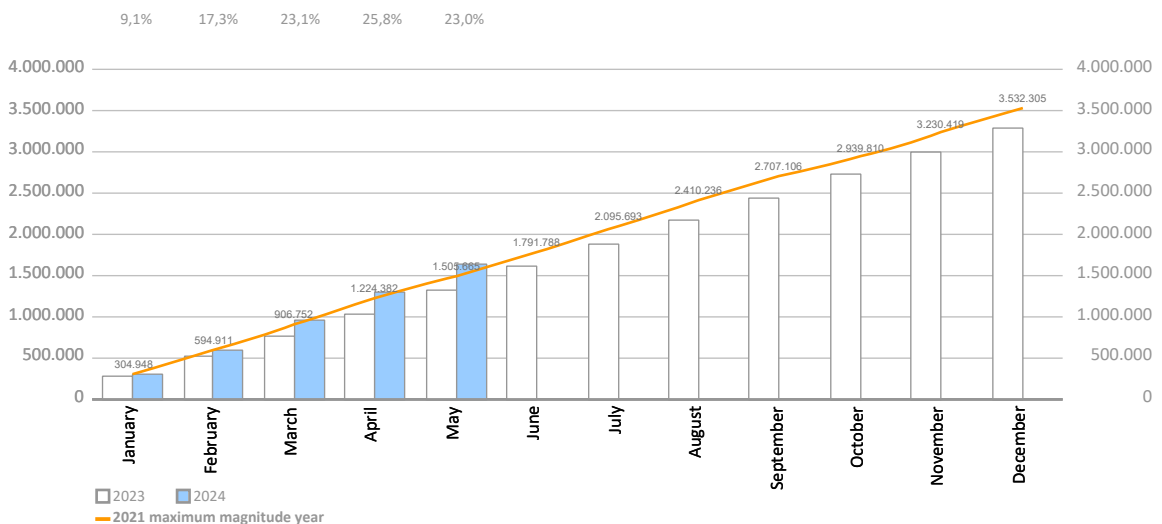
TRAFFIC INDICATORS

Total traffic	Monthly accumulated				% 24-23 accum. April	% 24-23 accum. March	Total traffic 2023
	2023	2024	Diff. 24-23	%			
Total throughput (tonnes)	26.400.927	28.635.488	2.234.561	8,5%	8,6%	8,4%	62.415.382
Supplies	659.564	684.478	24.914	3,8%	-2,2%	-5,9%	1.632.494
Fishing	660	944	284	43,1%	61,9%	43,1%	1.544
TOTAL TRAFFIC (tonnes)	27.061.151	29.320.911	2.259.760	8,4%	8,3%	8,1%	64.049.420
TEU	1.328.133	1.633.353	305.220	23,0%	25,8%	23,1%	3.280.234
UTI	171.243	178.292	7.050	4,1%	5,1%	3,7%	413.945
Automobiles (units)	337.872	323.562	-14.310	-4,2%	-7,6%	-6,3%	790.318
Vessels (units)	3.459	3.398	-61	-1,8%	-0,9%	-0,3%	8.766
Railway traffic (units)	4.370	4.909	539	12,3%	12,0%	7,7%	10.439
Cruise passengers (units)	996.081	1.035.456	39.375	4,0%	6,4%	9,4%	3.569.125
Ferry passengers (units)	472.800	483.526	10.726	2,3%	2,5%	10,8%	1.735.495
Automobile passengers (units)	127.522	135.932	8.410	6,6%	5,0%	12,2%	515.293

Monthly evolution of the accumulated traffic of goods. Tonnes



Monthly evolution of the accumulated traffic of goods. TEU



TRAFFIC INDICATORS

Main indicators	Monthly accumulated				Last 12 months	Total traffic 2023	% 12 months-2023
	2023	2024	Diff. 24-23	%			
Goods indicators by navigation and operation (tonnes)							
Navigation (t)	26.400.927	28.635.488	2.234.561	8,5%	64.649.943	62.415.382	3,6%
Domestic	3.386.315	3.392.717	6.402	0,2%	8.029.966	8.023.564	0,1%
Foreign	23.014.612	25.242.771	2.228.159	9,7%	56.619.976	54.391.818	4,1%
Operation (t)	26.400.927	28.635.488	2.234.561	8,5%	64.649.943	62.415.382	3,6%
Loaded	8.107.860	8.117.772	9.912	0,1%	19.173.076	19.163.164	0,1%
Unloaded	9.696.453	9.059.671	-636.782	-6,6%	22.022.087	22.658.869	-2,8%
Transit	8.596.613	11.458.044	2.861.431	33,3%	23.454.780	20.593.349	13,9%
Goods indicators by main units							
Containers (TEU)	1.328.133	1.633.353	305.220	23,0%	3.585.454	3.280.234	9,3%
TEU O/D	801.005	857.097	56.091	7,0%	2.016.455	1.960.364	2,9%
TEU transit	527.128	776.257	249.129	47,3%	1.568.999	1.319.871	18,9%
Containerized tonnes	13.807.109	16.454.774	2.647.665	19,2%	36.173.631	33.525.966	7,9%
Level of containerization	74,61%	77,09%			76,01%	74,92%	
Passengers (u)	1.468.881	1.518.982	50.101	3,4%	5.354.721	5.304.620	0,9%
Regular line	472.800	483.526	10.726	2,3%	1.746.221	1.735.495	0,6%
Pleasure cruises	996.081	1.035.456	39.375	4,0%	3.608.500	3.569.125	1,1%
Automobiles (u)	337.872	323.562	-14.310	-4,2%	776.008	790.318	-1,8%
Loaded	175.523	201.514	25.991	14,8%	438.423	412.432	6,3%
Unloaded	111.335	73.060	-38.275	-34,4%	217.307	255.582	-15,0%
Transit	51.014	48.988	-2.026	-4,0%	120.278	122.304	-1,7%
Vessels (u)	3.459	3.398	-61	-1,8%	8.705	8.766	-0,7%
Number of calls	3.459	3.398	-61	-1,8%	8.705	8.766	-0,7%
GT	141.228.302	141.119.816	-108.486	-0,1%	374.192.230	374.300.716	-0,0%
Average tonnes by vessel	7.633	8.427	795	10,4%	7.427	7.120	4,3%
UTI	171.243	178.292	7.050	4,1%	420.994	413.945	1,7%
Domestic	106.293	108.007	1.714	1,6%	261.210	259.496	0,7%
% Full	62,2%	63,2%			62,3%	61,9%	
Foreign	64.950	70.285	5.336	8,2%	159.784	154.449	3,5%
% Full	92,5%	91,0%			90,9%	91,5%	

TRAFFIC INDICATORS

Breakdown of total traffic (tonnes)	Monthly accumulated				% 24-23 accum. April	% 24-23 accum. March	% of total accum. 2024
	2023	2024	Diff. 24-23	%			
Goods indicators by type of packaging (t)	26.400.927	28.635.488	2.234.561	8,5%	8,6%	8,4%	100%
Liquid bulk	5.779.158	5.448.466	-330.693	-5,7%	-12,5%	-7,9%	19,0%
Hydrocarbons	4.119.322	3.521.524	-597.798	-14,5%	-20,6%	-14,4%	12,3%
Petrol	1.158.198	1.312.222	154.024	13,3%	1,2%	0,8%	4,6%
Diesel oils	977.483	972.390	-5.094	-0,5%	9,4%	15,7%	3,4%
Natural gas	1.315.903	774.871	-541.032	-41,1%	-56,0%	-46,0%	2,7%
Fuel oil	580.141	341.471	-238.669	-41,1%	-18,2%	-5,2%	1,2%
Other petroleum products	78.503	111.377	32.874	41,9%	29,2%	27,1%	0,4%
Remainder	9.094	9.192	98	1,1%	-17,4%	15,5%	0,0%
Other liquid bulk	1.659.836	1.926.942	267.105	16,1%	7,2%	7,3%	6,7%
Chemical products	602.631	982.337	379.706	63,0%	45,8%	57,7%	3,4%
Biofuel	631.973	471.510	-160.463	-25,4%	-24,1%	-29,2%	1,6%
Oils and fats	392.222	389.781	-2.441	-0,6%	-9,7%	-9,2%	1,4%
Natural/artificial fertilizer	27.094	38.253	11.159	41,2%	-14,2%	44,7%	0,1%
Other cargo by type	0	35.659	35.659	0,0%	0,0%	0,0%	0,1%
Remainder	5.917	9.402	3.486	58,9%	-46,8%		0,0%
Dry bulk	2.115.168	1.841.966	-273.202	-12,9%	-14,5%	-15,5%	6,4%
Special installation	1.989.227	1.719.328	-269.899	-13,6%	-14,5%	-16,1%	6,0%
Soya bean	697.651	667.357	-30.294	-4,3%	-0,3%	-6,2%	2,3%
Cement and clinker	449.818	324.364	-125.454	-27,9%	-47,7%	-52,8%	1,1%
Cereals and flours	402.021	291.582	-110.439	-27,5%	15,1%	20,0%	1,0%
Potashes	164.467	231.596	67.129	40,8%	28,7%	9,7%	0,8%
Common salt	263.220	190.726	-72.494	-27,5%	-52,4%	-49,8%	0,7%
Remainder	12.050	13.703	1.653	13,7%	89,0%	383,7%	0,0%
Without special installation	125.941	122.638	-3.303	-2,6%	-15,4%	-7,9%	0,4%
Scrap iron	86.487	70.330	-16.157	-18,7%	-18,3%	-9,1%	0,2%
Other non-metallic minerals	22.091	15.800	-6.291	-28,5%	-38,3%	-60,1%	0,1%
Other minerals and metallic waste	5.800	13.400	7.600	131,0%	44,8%	0,0%	0,0%
Chemical products	8.450	12.345	3.895	46,1%	25,5%	25,5%	0,0%
Common salt	3.113	5.912	2.799	89,9%	-13,3%	-13,3%	0,0%
Remainder	0	4.851	4.851				0,0%
General cargo	18.506.601	21.345.056	2.838.456	15,3%	18,0%	16,2%	74,5%
Containerized	13.807.109	16.454.774	2.647.665	19,2%	22,5%	20,6%	57,5%
Tare of containers	2.720.389	3.322.887	602.497	22,1%	25,0%	22,4%	11,6%
Chemical products	2.151.716	2.579.057	427.341	19,9%	22,2%	16,3%	9,0%
Other cargo by type	1.437.316	1.735.038	297.722	20,7%	28,5%	22,3%	6,1%
Other food products	1.388.930	1.586.379	197.449	14,2%	16,4%	18,1%	5,5%
Paper and pulp	1.015.037	1.146.959	131.922	13,0%	21,9%	23,0%	4,0%
Remainder	5.093.721	6.084.454	990.733	19,5%	21,5%	21,2%	21,2%
Non-containerized	4.699.492	4.890.283	190.791	4,1%	4,5%	3,0%	17,1%
Tare of platform and wagons (Ro-Ro)	1.763.598	1.815.276	51.678	2,9%	3,6%	1,8%	6,3%
Other cargo by type	782.747	825.306	42.559	5,4%	3,6%	2,1%	2,9%
Machinery and spare parts	466.862	514.443	47.581	10,2%	10,2%	7,0%	1,8%
Automobiles and parts	565.786	512.629	-53.157	-9,4%	-12,8%	-11,9%	1,8%
Frozen fish	217.490	213.072	-4.419	-2,0%	-0,1%	-0,7%	0,7%
Remainder	903.008	1.009.557	106.548	11,8%	16,8%	15,5%	3,5%

TRAFFIC INDICATORS

Breakdown of traffic in transit (tonnes)	Monthly accumulated				% 24-23 accum. April	% 24-23 accum. March	% of total accum. 2024
	2023	2024	Diff. 24-23	%			
Goods indicators by type of packaging (t)	8.596.613	11.458.044	2.861.431	33,3%	37,8%	39,7%	100%
Liquid bulk	1.992.119	2.330.897	338.779	17,0%	11,6%	18,5%	20,3%
Hydrocarbons	1.270.765	1.343.151	72.386	5,7%	2,5%	15,3%	11,7%
Petrol	556.792	782.077	225.285	40,5%	9,2%	9,8%	6,8%
Diesel oils	314.810	294.141	-20.670	-6,6%	12,7%	41,3%	2,6%
Fuel oil	399.163	253.426	-145.737	-36,5%	-22,0%	0,2%	2,2%
Other petroleum products	0	13.508	13.508				0,1%
Remainder	0	0	0				0,0%
Other liquid bulk	721.354	987.746	266.392	36,9%	25,8%	23,8%	8,6%
Chemical products	303.153	635.197	332.043	109,5%	73,0%	92,0%	5,5%
Biofuel	399.113	325.734	-73.379	-18,4%	-13,1%	-15,4%	2,8%
Oils and fats	19.087	15.418	-3.668	-19,2%	-50,9%	-80,4%	0,1%
Other cargo by type	0	11.397	11.397				0,1%
Remainder	0	0	0				0,0%
Dry bulk	0	0	0				0,0%
Special installation	0	0	0				0,0%
Remainder	0	0	0				0,0%
Without special installation	0	0	0				0,0%
Remainder	0	0	0				0,0%
General cargo	6.604.494	9.127.147	2.522.653	38,2%	45,2%	45,3%	79,7%
Containerized	6.410.571	8.856.503	2.445.932	38,2%	45,4%	45,2%	77,3%
Tare of containers	1.091.721	1.588.439	496.717	45,5%	52,9%	48,1%	13,9%
Chemical products	845.610	1.086.839	241.229	28,5%	34,3%	25,5%	9,5%
Other food products	810.291	1.064.321	254.030	31,4%	37,6%	44,1%	9,3%
Other cargo by type	626.045	902.123	276.078	44,1%	57,9%	48,9%	7,9%
Other construction materials	410.700	609.222	198.521	48,3%	53,5%	50,5%	5,3%
Remainder	2.626.203	3.605.560	979.357	37,3%	44,1%	48,6%	31,5%
Non-containerized	193.923	270.644	76.721	39,6%	39,1%	51,2%	2,4%
Automobiles and parts	83.232	88.693	5.461	6,6%	-3,1%	8,1%	0,8%
Tare of platform and wagons (Ro-Ro)	26.426	46.106	19.680	74,5%	80,0%	88,1%	0,4%
Other cargo by type	29.845	37.828	7.983	26,7%	22,1%	17,3%	0,3%
Oils and fats	5.079	30.806	25.727	506,6%	784,4%	909,6%	0,3%
Wines, beverages, spirits and derivatives	11.280	27.718	16.438	145,7%	180,3%	251,8%	0,2%
Remainder	38.061	39.493	1.432	3,8%	3,8%	4,3%	0,3%

TRAFFIC INDICATORS

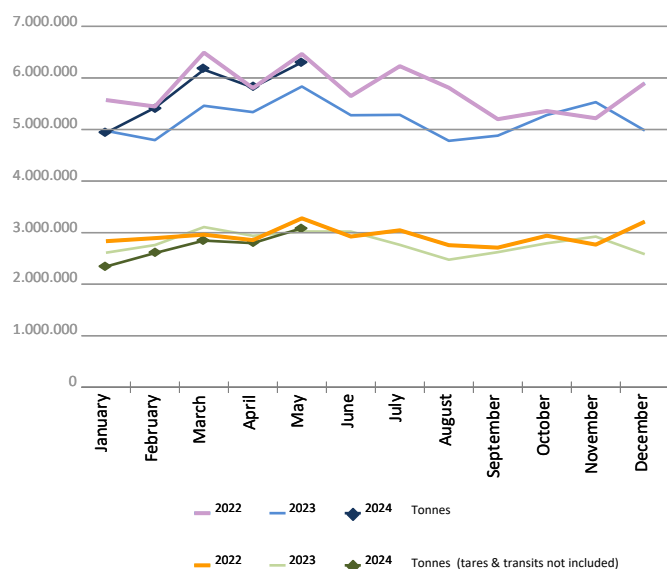
Monthly evolution of traffic. Tonnes

Monthly evolution of traffic	Total tonnes			%		Tonnes (tares & transits not included)			%	
	2023	2024	Diff. 24-23	Monthly	Accumulated	2023	2024	Diff. 24-23	Monthly	Accumulated
January	4.974.831	4.933.868	-40.963	-0,8%	-0,8%	2.610.318	2.341.824	-268.494	-10,3%	-10,3%
February	4.794.197	5.421.765	627.568	13,1%	6,0%	2.759.119	2.603.693	-155.426	-5,6%	-7,9%
March	5.460.878	6.160.254	699.377	12,8%	8,4%	3.107.624	2.845.457	-262.166	-8,4%	-8,1%
April	5.337.004	5.815.970	478.965	9,0%	8,6%	2.938.796	2.796.458	-142.337	-4,8%	-7,3%
May	5.834.016	6.303.631	469.614	8,0%	8,5%	3.022.618	3.086.393	63.775	2,1%	-5,3%
June	5.276.806					3.020.382				
July	5.284.608					2.762.705				
August	4.780.504					2.474.573				
September	4.880.699					2.621.228				
October	5.280.671					2.793.661				
November	5.530.665					2.922.780				
December	4.980.503					2.581.525				
Total	62.415.382	28.635.488				33.615.328	13.673.825			

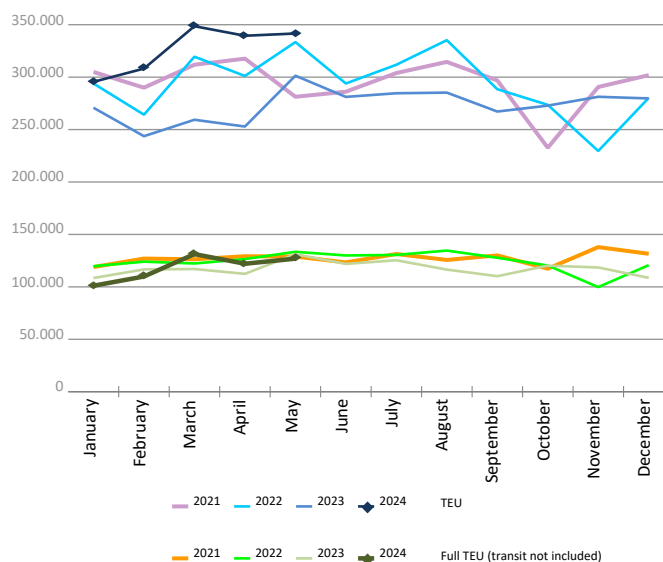
Monthly evolution of traffic. TEU

Monthly evolution of traffic	Total TEU			%		Full TEU (transit not included)			%	
	2023	2024	Diff. 24-23	Monthly	Accumulated	2023	2024	Diff. 24-23	Monthly	Accumulated
January	270.816	295.528	24.712	9,1%	9,1%	108.430	101.061	-7.369	-6,8%	-6,8%
February	243.685	308.162	64.477	26,5%	17,3%	116.640	109.884	-6.757	-5,8%	-6,3%
March	259.357	348.578	89.220	34,4%	23,1%	117.011	131.247	14.236	12,2%	0,0%
April	252.905	339.480	86.575	34,2%	25,8%	112.397	122.044	9.646	8,6%	2,1%
May	301.370	341.607	40.237	13,4%	23,0%	131.146	126.920	-4.227	-3,2%	0,9%
June	281.167					121.905				
July	284.638					125.356				
August	285.262					116.482				
September	267.204					110.162				
October	272.860					120.252				
November	281.277					118.502				
December	279.694					108.620				
Total	3.280.234	1.633.353				1.406.901	591.154			

Goods (total tonnes)



Containers (total TEU)



CONTAINER TRAFFIC

TEU evolution

Full-unloaded foreign	Full TEU			%		Full-loaded foreign	Full TEU			%	
	2023	2024	Diff. 24-23	Monthly	Accumulated		2023	2024	Diff. 24-23	Monthly	Accumulated
January	49.138	41.691	-7.447	-15,2%	-15,2%	January	51.046	49.933	-1.113	-2,2%	-2,2%
February	51.449	44.498	-6.951	-13,5%	-14,3%	February	56.052	55.500	-552	-1,0%	-1,6%
March	44.515	58.373	13.859	31,1%	-0,4%	March	60.781	61.850	1.069	1,8%	-0,4%
April	51.432	57.417	5.986	11,6%	2,8%	April	51.392	55.133	3.741	7,3%	1,4%
May	64.095	56.613	-7.482	-11,7%	-0,8%	May	56.516	60.476	3.960	7,0%	2,6%
June	53.940					June	57.195				
July	59.685					July	54.831				
August	56.638					August	50.134				
September	48.415					September	50.745				
October	52.489					October	57.938				
November	48.781					November	59.645				
December	43.001					December	55.662				
Total	623.574	258.592				Total	661.934	282.891			

Full-unloaded domestic	Full TEU			%		Full-loaded domestic	Full TEU			%	
	2023	2024	Diff. 24-23	Monthly	Accumulated		2023	2024	Diff. 24-23	Monthly	Accumulated
January	1.702	2.174	473	27,8%	27,8%	January	6.545	7.264	719	11,0%	11,0%
February	1.836	2.269	434	23,6%	25,6%	February	7.304	7.617	313	4,3%	7,4%
March	2.227	2.280	53	2,4%	16,6%	March	9.488	8.744	-744	-7,8%	1,2%
April	1.818	2.011	194	10,6%	15,2%	April	7.756	7.483	-274	-3,5%	0,0%
May	2.223	2.226	3	0,1%	11,8%	May	8.313	7.606	-708	-8,5%	-1,8%
June	1.938					June	8.833				
July	1.881					July	8.960				
August	1.989					August	7.722				
September	2.163					September	8.839				
October	2.164					October	7.662				
November	1.913					November	8.164				
December	1.886					December	8.072				
Total	23.737	10.959				Total	97.656	38.713			

Full - Transit	Full TEU			%		Empty	Empty TEU			%	
	2023	2024	Diff. 24-23	Monthly	Accumulated		2023	2024	Diff. 24-23	Monthly	Accumulated
January	97.136	112.121	14.985	15,4%	15,4%	January	65.251	82.346	17.096	26,2%	26,2%
February	71.919	117.901	45.982	63,9%	36,1%	February	55.126	80.377	25.251	45,8%	35,2%
March	83.590	133.694	50.104	59,9%	44,0%	March	58.757	83.638	24.881	42,3%	37,5%
April	83.957	133.600	49.644	59,1%	47,7%	April	56.551	83.836	27.285	48,2%	40,1%
May	97.489	116.349	18.860	19,3%	41,4%	May	72.735	98.338	25.603	35,2%	38,9%
June	84.535					June	74.728				
July	93.112					July	66.171				
August	83.799					August	84.981				
September	86.284					September	70.759				
October	90.687					October	61.921				
November	86.564					November	76.211				
December	90.643					December	80.432				
Total	1.049.712	613.664				Total	823.622	428.535			

CONTAINER TRAFFIC

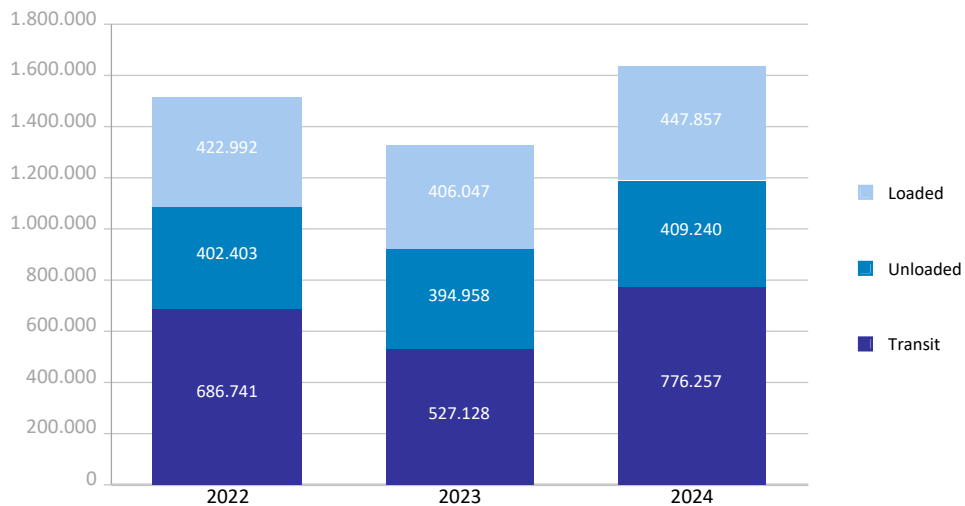
TEU

Container traffic	Monthly accumulated 2023			Monthly accumulated 2024			%
	Domestic	Foreign	Total	Domestic	Foreign	Total	
Total traffic	93.267	1.234.867	1.328.133	92.600	1.540.753	1.633.353	23,0%
Unloaded	49.834	620.844	670.678	49.106	777.990	827.096	23,3%
Roll On-Roll Off	11.106	5.976	17.082	9.496	5.203	14.699	-13,9%
Lift On-Lift Off	38.729	614.868	653.597	39.610	772.787	812.397	24,3%
Loaded	43.433	614.023	657.455	43.494	762.764	806.258	22,6%
Roll On-Roll Off	12.319	5.854	18.173	9.748	5.016	14.764	-18,8%
Lift On-Lift Off	31.114	608.169	639.282	33.746	757.748	791.494	23,8%

Breakdown by navigation and operation	Monthly accumulated 2023			Monthly accumulated 2024			%
	Domestic	Foreign	Total	Domestic	Foreign	Total	
Loaded	43.408	362.640	406.047	43.485	404.373	447.857	10,3%
Full	39.407	275.786	315.193	38.713	282.891	321.604	2,0%
Empty	4.001	86.854	90.855	4.772	121.482	126.254	39,0%
Unloaded	47.871	347.087	394.958	47.798	361.442	409.240	3,6%
Full	9.804	260.627	270.431	10.959	258.592	269.551	-0,3%
Empty	38.067	86.460	124.527	36.839	102.850	139.689	12,2%
Transit	1.988	525.140	527.128	1.318	774.939	776.257	47,3%
Full	38	434.052	434.090	11	613.654	613.664	41,4%
Empty	1.950	91.088	93.038	1.307	161.286	162.593	74,8%

Total traffic	93.267	1.234.867	1.328.133	92.600	1.540.753	1.633.353	23,0%
Full	49.249	970.465	1.019.714	49.682	1.155.136	1.204.818	18,2%
Empty	44.018	264.402	308.420	42.918	385.617	428.535	38,9%
% Empty	47,2%	21,4%	23,2%	46,3%	25,0%	26,2%	
% Transit	2,1%	42,5%	39,7%	1,4%	50,3%	47,5%	

General cargo distribution by operation (TEU)

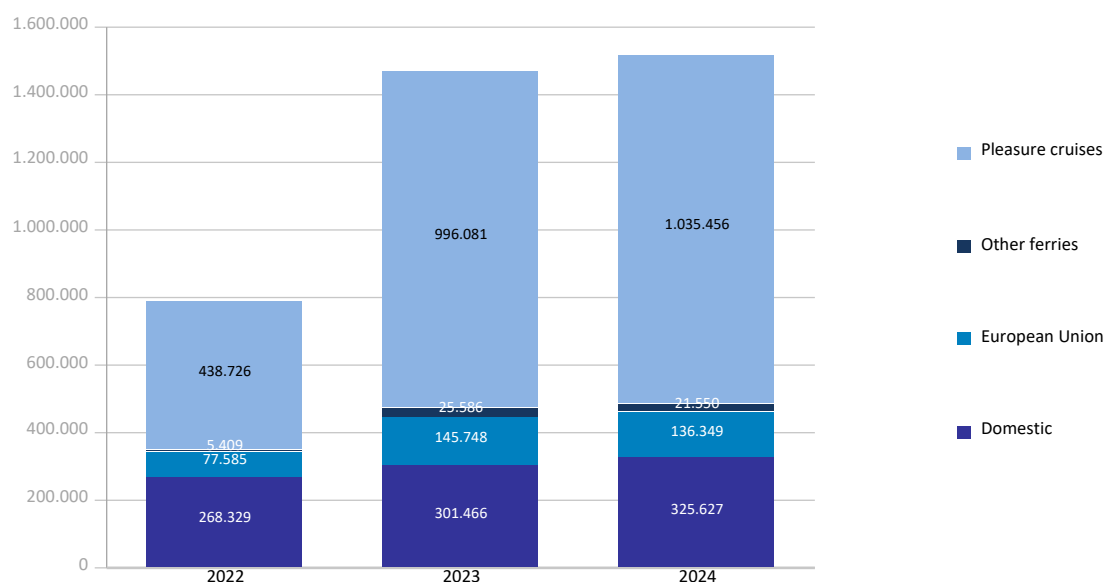


PASSENGER TRAFFIC

Total passenger traffic (units)	Monthly accumulated				% 24-23 accum. April	% 24-23 accum. March
	2023	2024	Diff. 24-23	%		
Total passengers	1.468.881	1.518.982	50.101	3,4%	4,9%	10,0%
Embarkation	499.906	521.994	22.088	4,4%	7,9%	23,7%
Disembarkation	454.305	485.890	31.585	7,0%	9,1%	16,0%
Transit	514.670	511.098	-3.572	-0,7%	-1,5%	-8,0%
Regular line ferries	472.800	483.526	10.726	2,3%	2,5%	10,8%
Embarkation	254.295	258.527	4.232	1,7%	1,9%	11,7%
Disembarkation	218.505	224.999	6.494	3,0%	3,2%	9,8%
Domestic	301.466	325.627	24.161	8,0%	5,1%	15,0%
Embarkation	169.401	181.906	12.505	7,4%	4,1%	14,0%
Disembarkation	132.065	143.721	11.656	8,8%	6,5%	16,4%
European Union	145.748	136.349	-9.399	-6,4%	-0,4%	6,7%
Embarkation	71.880	66.463	-5.417	-7,5%	0,7%	12,4%
Disembarkation	73.868	69.886	-3.982	-5,4%	-1,4%	2,1%
Other ferries	25.586	21.550	-4.036	-15,8%	-12,6%	-13,7%
Embarkation	13.014	10.158	-2.856	-21,9%	-20,9%	-19,8%
Disembarkation	12.572	11.392	-1.180	-9,4%	-3,8%	-8,5%
Pleasure cruises	996.081	1.035.456	39.375	4,0%	6,4%	9,4%
Embarkation	245.611	263.467	17.856	7,3%	17,9%	53,4%
Disembarkation	235.800	260.891	25.091	10,6%	17,7%	27,1%
Transit	514.670	511.098	-3.572	-0,7%	-1,5%	-8,0%

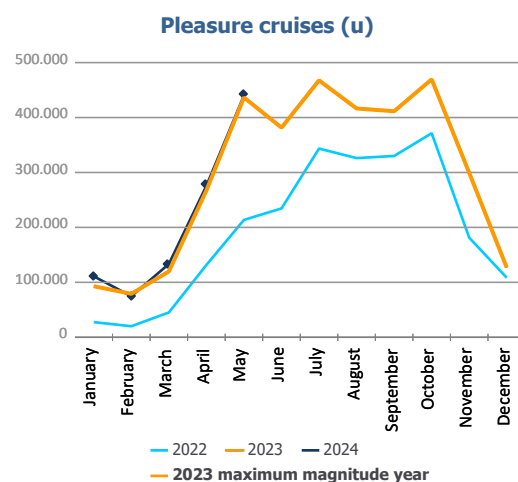
Total passenger calls (units)	Monthly accumulated				% 24-23 accum. April	% 24-23 accum. March
	2023	2024	Diff. 24-23	%		
Total number of calls	1.515	1.442	-73	-4,8%	-3,4%	-4,6%
Regular Line ferries	1.242	1.194	-48	-3,9%	-2,7%	-3,4%
Pleasure cruises	273	248	-25	-9,2%	-7,6%	-15,4%

Passenger traffic distribution (u)

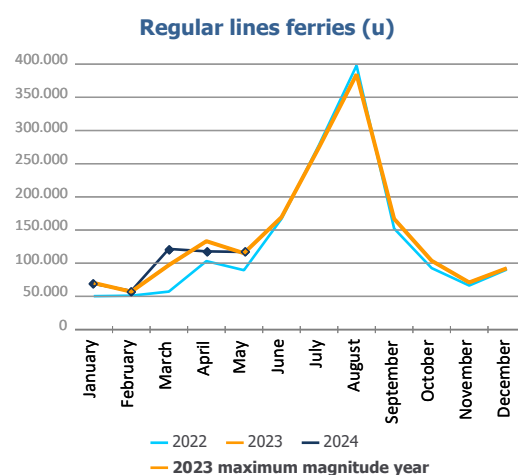


PASSENGER CLASSIFICATION

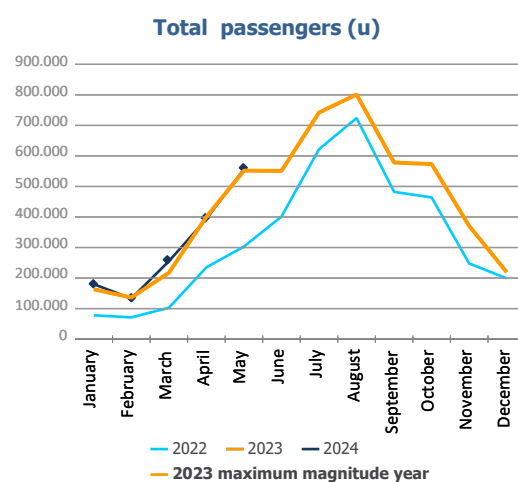
Monthly evolution of passenger traffic	Pleasure cruises			%	
	2023	2024	Diff. 24-23	Monthly	Accumulated
January	93.013	111.036	18.023	19,4%	19,4%
February	79.194	74.939	-4.255	-5,4%	8,0%
March	119.885	133.501	13.616	11,4%	9,4%
April	267.420	275.893	8.473	3,2%	6,4%
May	436.569	440.087	3.518	0,8%	4,0%
June	381.587				
July	467.607				
August	416.517				
September	411.457				
October	469.510				
November	299.424				
December	126.942				
Total	3.569.125	1.035.456			



Monthly evolution of passenger traffic	Regular lines ferries			%	
	2023	2024	Diff. 24-23	Monthly	Accumulated
January	70.262	68.931	-1.331	-1,9%	-1,9%
February	57.059	58.232	1.173	2,1%	-0,1%
March	97.166	121.528	24.362	25,1%	10,8%
April	133.201	117.845	-15.356	-11,5%	2,5%
May	115.112	116.990	1.878	1,6%	2,3%
June	169.419				
July	274.632				
August	384.652				
September	166.887				
October	103.714				
November	71.033				
December	92.358				
Total	1.735.495	483.526			



Monthly evolution of passenger traffic	Total passengers			%	
	2023	2024	Diff. 24-23	Monthly	Accumulated
January	163.275	179.967	16.692	10,2%	10,2%
February	136.253	133.171	-3.082	-2,3%	4,5%
March	217.051	255.029	37.978	17,5%	10,0%
April	400.621	393.738	-6.883	-1,7%	4,9%
May	551.681	557.077	5.396	1,0%	3,4%
June	551.006				
July	742.239				
August	801.169				
September	578.344				
October	573.224				
November	370.457				
December	219.300				
Total	5.304.620	1.518.982			

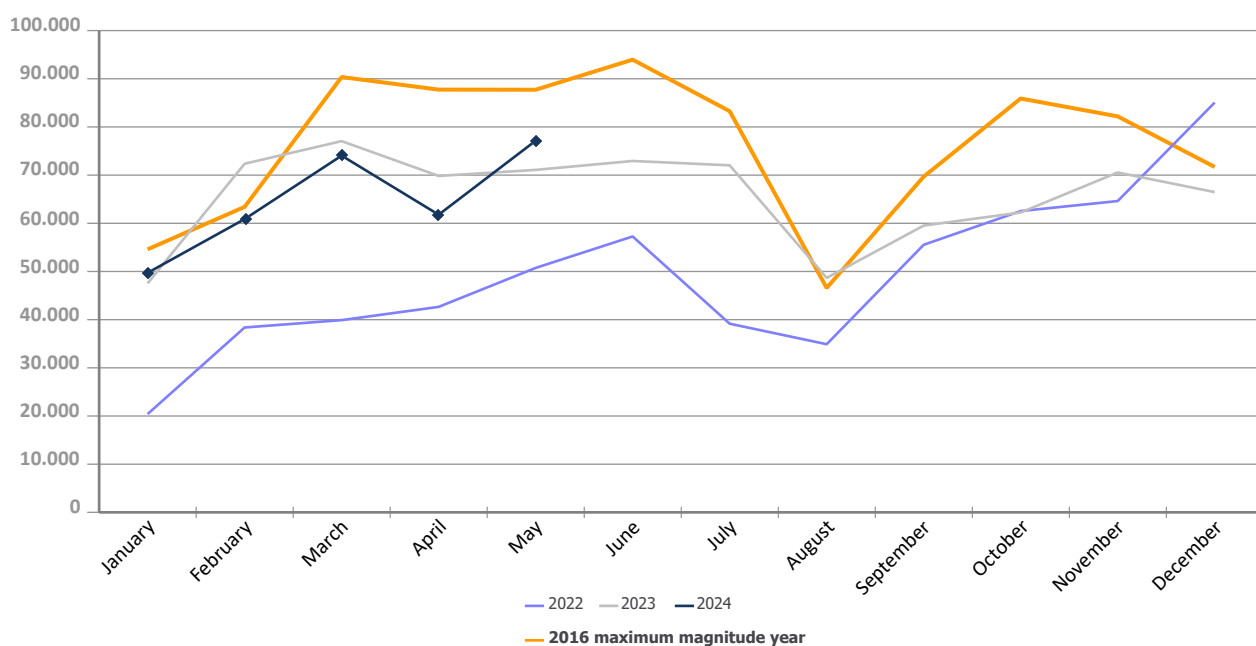


AUTOMOBILE TRAFFIC

Total automobile traffic (units)	Monthly accumulated				% 24-23 accum. April	% 24-23 accum. March
	2023	2024	Diff. 24-23	%		
Automobile traffic by navigation and operation	337.872	323.562	-14.310	-4,2%	-7,6%	-6,3%
Domestic	47.835	47.711	-124	-0,3%	-5,1%	-12,9%
Loaded	42.987	43.848	861	2,0%	-2,0%	-11,0%
Unloaded	4.827	3.790	-1.037	-21,5%	-29,4%	-28,0%
Transit	21	73	52	247,6%		
Foreign	290.037	275.851	-14.186	-4,9%	-8,0%	-5,2%
Loaded	132.536	157.666	25.130	19,0%	14,4%	13,4%
Unloaded	106.508	69.270	-37.238	-35,0%	-33,5%	-31,5%
Transit	50.993	48.915	-2.078	-4,1%	-9,5%	0,6%

Monthly automobile traffic (u)	Monthly		Accumulated		%	
	2023	2024	2023	2024	Monthly	Accumulated
January	47.534	49.721	47.534	49.721	4,6%	4,6%
February	72.364	60.872	119.898	110.593	-15,9%	-7,8%
March	77.057	74.044	196.955	184.637	-3,9%	-6,3%
April	69.834	61.791	266.789	246.428	-11,5%	-7,6%
May	71.083	77.134	337.872	323.562	8,5%	-4,2%
June	72.935		410.807			
July	72.037		482.844			
August	48.671		531.515			
September	59.527		591.042			
October	62.244		653.286			
November	70.552		723.838			
December	66.480		790.318			

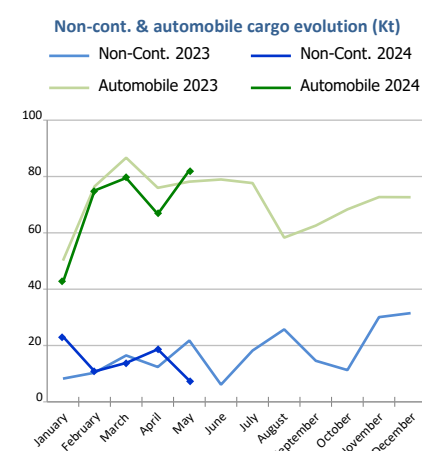
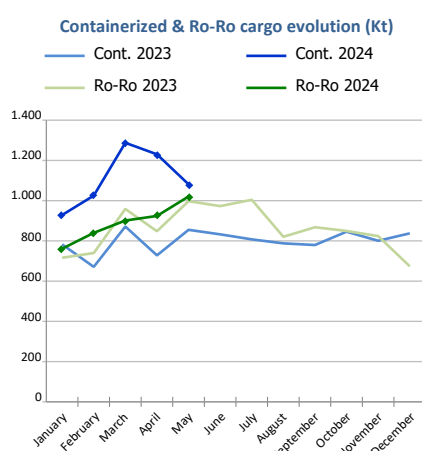
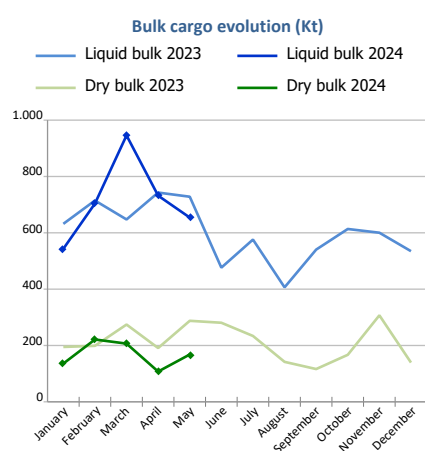
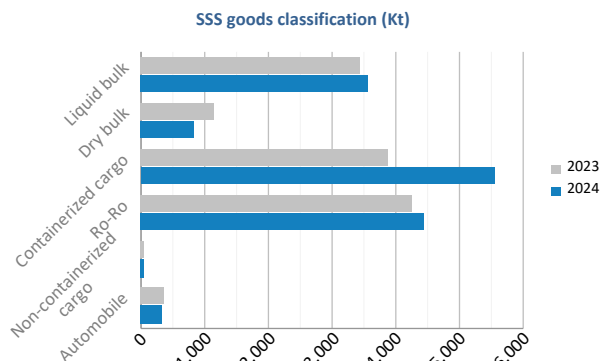
Evolution of monthly automobile traffic (u)



SHORT SEA SHIPPING (SSS)

SSS Goods classification

Goods classification. Tonnes	Monthly accumulated		%	% of total port traffic
	2023	2024		
Liquid bulk	3.464.920	3.578.967	3,3%	65,7%
Dry bulk	1.146.607	839.061	-26,8%	45,6%
Containerized cargo	3.908.059	5.552.852	42,1%	34,2%
Ro-Ro	4.259.884	4.446.801	4,4%	99,5%
Non-containerized cargo	69.200	73.964	6,9%	39,8%
Automobile	367.454	345.887	-5,9%	73,2%
Total	13.216.124	14.837.532	12,3%	51,8%



SSS General Cargo	Spanish Islands			SSS Remainder			TOTAL		
	2023	2024	%	2023	2024	%	2023	2024	%
Containerized cargo	366.264	398.986	8,9%	3.541.795	5.153.866	45,5%	3.908.059	5.552.852	42,1%
O/D	360.384	383.628	6,4%	1.322.342	1.618.452	22,4%	1.682.727	2.002.080	19,0%
Transit	5.879	15.358	161,2%	2.219.453	3.535.414	59,3%	2.225.332	3.550.772	59,6%
Ro-Ro	2.360.136	2.434.154	3,1%	1.899.748	2.012.647	5,9%	4.259.884	4.446.801	4,4%
O/D	2.360.136	2.434.112	3,1%	1.787.193	1.817.560	1,7%	4.147.328	4.251.672	2,5%
Transit	0	42		112.556	195.087	73,3%	112.556	195.129	73,4%
Non-cont. cargo	626	644	2,8%	68.573	73.320	6,9%	69.200	73.964	6,9%
O/D	626	644	2,8%	67.516	72.493	7,4%	68.142	73.137	7,3%
Transit	0	0		1.057	828	-21,7%	1.057	828	-21,7%
Automobile	70.762	69.128	-2,3%	296.692	276.759	-6,7%	367.454	345.887	-5,9%
O/D	70.612	69.100	-2,1%	242.096	229.413	-5,2%	312.708	298.513	-4,5%
Transit	150	28	-81,2%	54.596	47.346	-13,3%	54.746	47.374	-13,5%



Short Sea Shipping (SSS):

The transport of cargo/goods and passengers between ports situated in the European Union or between these ports and non-European ports with a coastline in seas bordering Europe. This applies to cargo either originating from or is destined for these countries (in accordance with the European Shortsea Network).

Motorways of the sea (MoS):

Short Sea Shipping services as an alternative to road transport and which fulfill the following criteria: minimum frequency of 3 calls per week and calling at a maximum of 3 different ports.

General cargo:

Including containerized cargo, non-containerized cargo, Ro-Ro and automobiles.

Containerized cargo:

Excluding container cargo by Ro-Ro.

Non-containerized cargo:

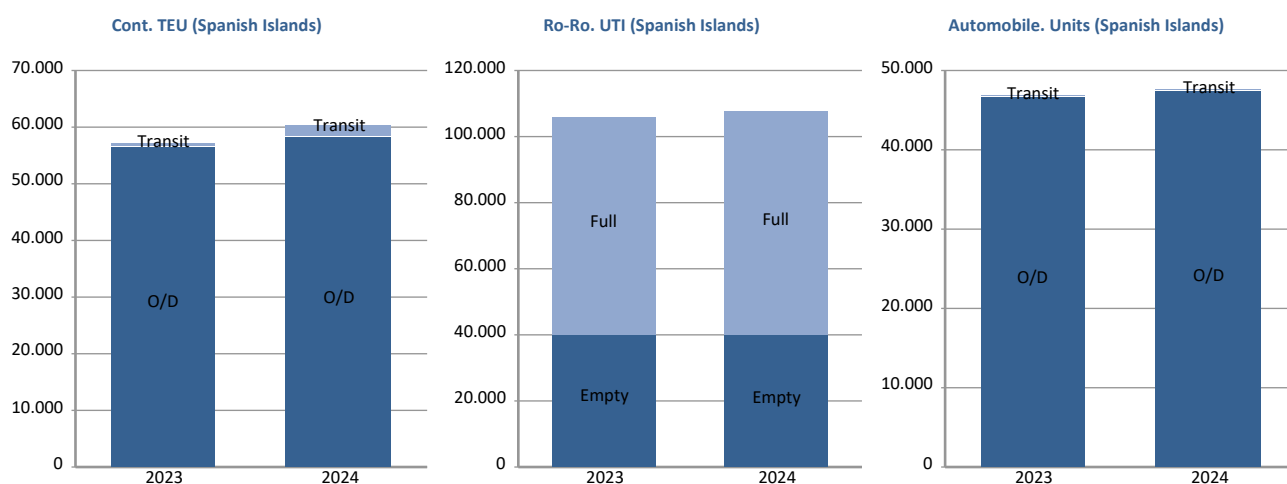
General non-containerized goods other than Ro-Ro and excluding automobiles.

Ro-Ro:

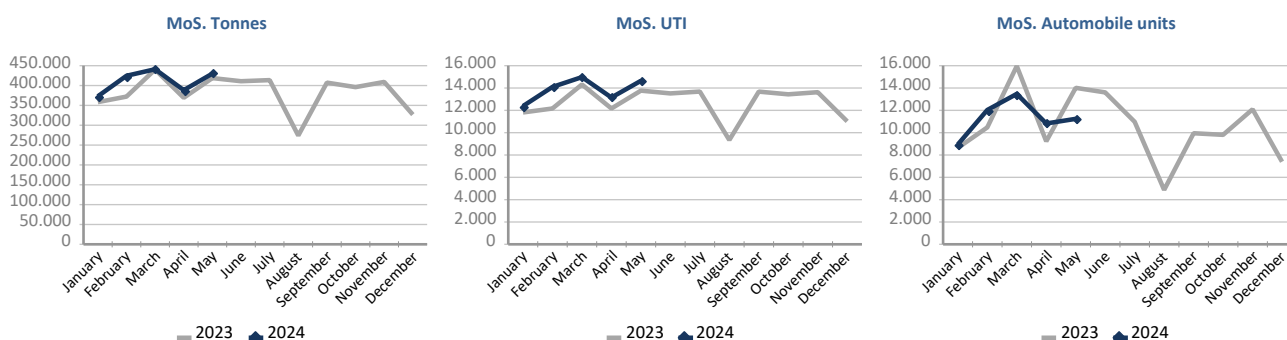
General cargo carried in UTI's. Excluding automobiles.

SHORT SEA SHIPPING (SSS)

SSS General cargo	Spanish Islands			SSS Remainder			TOTAL		
	2023	2024	%	2023	2024	%	2023	2024	%
Containerized cargo. TEU	57.015	60.418	6,0%	334.209	490.064	46,6%	391.224	550.482	40,7%
O/D	56.456	58.373	3,4%	160.623	202.216	25,9%	217.079	260.589	20,0%
Full	34.895	37.475	7,4%	93.348	111.967	19,9%	128.243	149.441	16,5%
Empty	21.561	20.898	-3,1%	67.275	90.249	34,2%	88.836	111.148	25,1%
Transit	559	2.046	265,9%	173.586	287.848	65,8%	174.145	289.894	66,5%
Full	475	1.274	168,1%	160.860	262.933	63,5%	161.335	264.206	63,8%
Empty	84	772	819,0%	12.726	24.916	95,8%	12.810	25.688	100,5%
Ro-Ro. UTI	106.085	107.872	1,7%	65.069	70.308	8,1%	171.154	178.180	4,1%
Full	66.170	68.314	3,2%	59.934	63.753	6,4%	126.104	132.067	4,7%
Empty	39.915	39.558	-0,9%	5.135	6.555	27,7%	45.050	46.113	2,4%
Automobile units	46.630	47.286	1,4%	204.360	200.727	-1,8%	250.990	248.013	-1,2%
O/D	46.529	47.264	1,6%	168.374	168.206	-0,1%	214.903	215.470	0,3%
Transit	101	22	-78,2%	35.986	32.521	-9,6%	36.087	32.543	-9,8%



Motorways of the Sea (MoS)	EU			Non-EU			TOTAL		
	2023	2024	%	2023	2024	%	2023	2024	%
Tonnes	1.945.641	2.052.561	5,5%	12.997	4.283	-67,0%	1.958.638	2.056.844	5,0%
Loaded	1.033.691	1.115.865	7,9%	8.180	3.765	-54,0%	1.041.871	1.119.630	7,5%
Unloaded	911.950	936.696	2,7%	4.817	518	-89,3%	916.767	937.214	2,2%
UTI	63.580	69.050	8,6%	647	204	-68,5%	64.227	69.254	7,8%
Loaded	32.430	35.790	10,4%	439	182	-58,5%	32.869	35.972	9,4%
Unloaded	31.150	33.260	6,8%	208	22	-89,4%	31.358	33.282	6,1%
Automobile units	58.202	55.361	-4,9%	117	1.153	885,5%	58.319	56.514	-3,1%
Loaded	54.940	52.331	-4,7%	112	1.153	929,5%	55.052	53.484	-2,8%
Unloaded	3.262	3.030	-7,1%	5	0		3.267	3.030	-7,3%

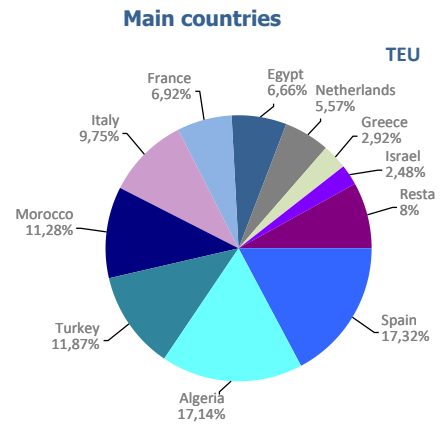


UTI: All those means of unitization, self-propelled or otherwise, that are directly or indirectly used as a means of land transport (e.g. trailers, platforms, trucks, freezer trucks, etc.) are considered as UTI. Containers are not considered to be included, except those that are handled by an equipment transport of the own terminal.

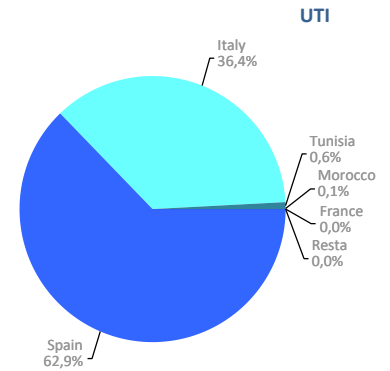
SHORT SEA SHIPPING (SSS)

SSS Ranking countries by mode of packaging

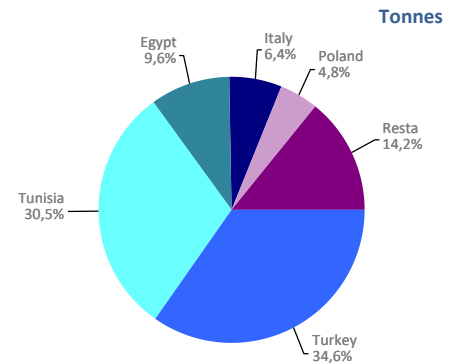
Containerized cargo. TEU	Monthly accumulated				% of total 2024
	2023	2024	Diff. 24-23	%	
Total	391.224	550.482	159.258	40,7%	100%
Spain	81.722	95.356	13.634	16,7%	17,3%
Algeria	70.032	94.347	24.315	34,7%	17,1%
Turkey	53.607	65.336	11.729	21,9%	11,9%
Morocco	48.527	62.078	13.551	27,9%	11,3%
Italy	30.518	53.699	23.181	76,0%	9,8%
France	31.891	38.091	6.200	19,4%	6,9%
Egypt	22.610	36.652	14.042	62,1%	6,7%
Netherlands	498	30.672	30.174	6058,9%	5,6%
Greece	12.764	16.055	3.292	25,8%	2,9%
Israel	8.342	13.648	5.307	63,6%	2,5%
Remainder	30.715	44.551	13.836	45,0%	8,1%



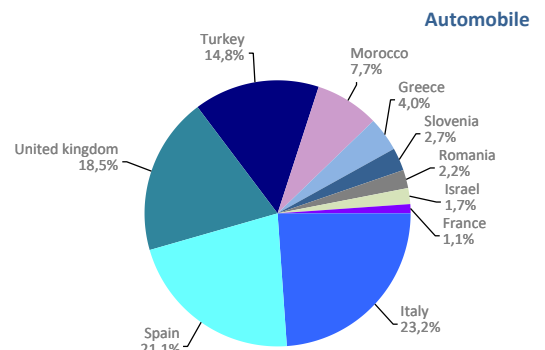
Ro-Ro. UTI	Monthly accumulated				% of total 2024
	2023	2024	Diff. 24-23	%	
Total	171.154	178.180	7.027	4,1%	100%
Spain	108.680	112.004	3.324	3,1%	62,9%
Italy	60.964	64.913	3.949	6,5%	36,4%
Tunisia	862	1.031	170	19,7%	0,6%
Morocco	647	218	-429	-66,3%	0,1%
France	0	11	11	0,0%	0,0%
Remainder	1	3	2	200,0%	0,0%



Non-cont. cargo. Tonnes	Monthly accumulated				% of total 2024
	2023	2024	Diff. 24-23	%	
Total	69.200	73.964	4.764	6,9%	100%
Turkey	647	25.580	24.933	3855,4%	34,6%
Tunisia	3.871	22.571	18.700	483,1%	30,5%
Egypt	28.583	7.085	-21.498	-75,2%	9,6%
Italy	24.551	4.710	-19.841	-80,8%	6,4%
Poland	0	3.536	3.536	0,0%	4,8%
Remainder	11.548	10.482	-1.066	-9,2%	14,2%



Automobile. Units	Monthly accumulated				% of total 2024
	2023	2024	Diff. 24-23	%	
Total	250.990	248.013	-2.977	-1,2%	100%
Italy	59.934	57.484	-2.450	-4,1%	23,2%
Spain	53.793	52.338	-1.455	-2,7%	21,1%
United kingdom	32.006	45.886	13.880	43,4%	18,5%
Turkey	22.897	36.658	13.761	60,1%	14,8%
Morocco	17.829	19.182	1.353	7,6%	7,7%
Greece	10.469	9.950	-519	-5,0%	4,0%
Slovenia	2.288	6.658	4.370	191,0%	2,7%
Romania	8.775	5.494	-3.281	-37,4%	2,2%
Israel	8.255	4.333	-3.922	-47,5%	1,7%
France	15.589	2.806	-12.783	-82,0%	1,1%
Remainder	19.155	7.224	-11.931	-62,3%	2,9%



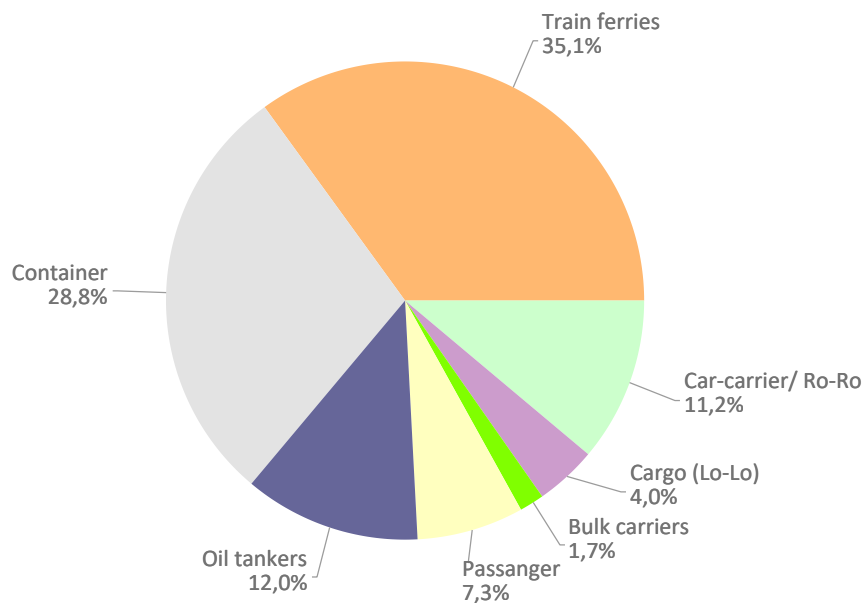
VESSELS TRAFFIC

Vessels traffic	Monthly accumulated		
	2023	2024	%
Number of calls	3.459	3.398	-1,8%
Tonnage	141.228.302	141.119.816	-0,1%
Average tonnes	40.829	41.530	1,7%

Type of vessels	Monthly accumulated					
	2023		2024		%	
	Calls	GT	Calls	GT	Calls	GT
Total	3.459	141.228.302	3.398	141.119.816	-1,8%	-0,1%
Car-carrier/ Ro-Ro	379	20.059.077	379	19.773.692	0,0%	-1,4%
Cargo (Lo-Lo)	141	811.978	136	1.253.172	-3,5%	54,3%
Bulk carriers	70	1.891.821	57	1.728.121	-18,6%	-8,7%
Passanger	273	31.274.837	247	29.117.010	-9,5%	-6,9%
Oil tankers	450	8.662.224	408	7.031.107	-9,3%	-18,8%
Container	891	39.945.631	980	46.449.275	10,0%	16,3%
Train ferries	1.255	38.582.734	1.191	35.767.439	-5,1%	-7,3%

Type of vessels (monthly accumulated 2024)	Domestic		Foreign	
	Calls	GT	Calls	GT
Total	1.218	29.444.781	2.180	111.675.035
Car-carrier/ Ro-Ro	30	712.033	349	19.061.659
Cargo (Lo-Lo)	13	67.100	123	1.186.072
Bulk carriers	4	74.231	53	1.653.890
Passanger	38	2.439.740	209	26.677.270
Oil tankers	45	506.363	363	6.524.744
Container	138	1.599.377	842	44.849.898
Train ferries	950	24.045.937	241	11.721.502

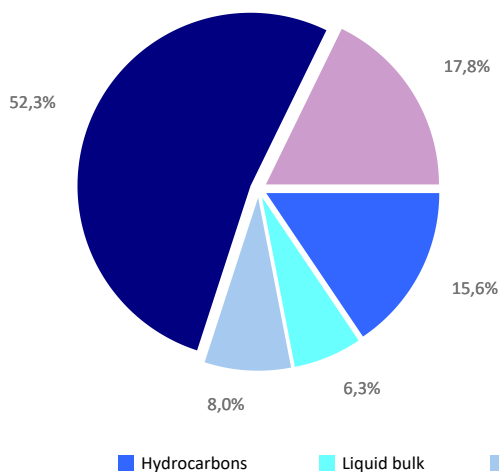
Distribution by type of vessel



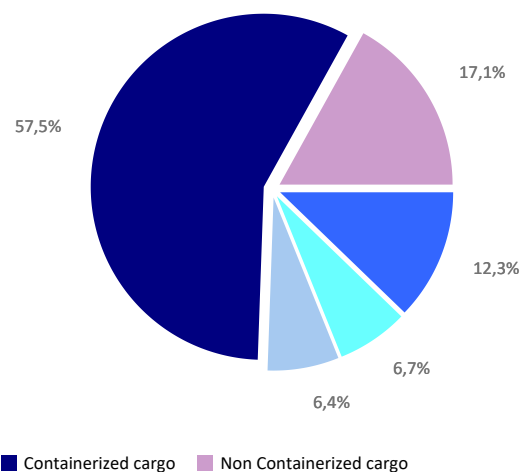
GOODS TRAFFIC

Type of packaging and navigation	Monthly accumulated 2023			Monthly accumulated 2024			%
	Domestic	Foreign	Total	Domestic	Foreign	Total	
Hydrocarbons	393.789	3.725.533	4.119.322	226.096	3.295.428	3.521.524	-14,5%
Incoming	335.807	2.995.265	3.331.072	118.085	2.697.095	2.815.179	-15,5%
Outgoing	57.982	730.268	788.250	108.011	598.333	706.345	-10,4%
Other liquid bulk	84.903	1.574.933	1.659.836	197.053	1.729.889	1.926.942	16,1%
Incoming	48.548	1.087.253	1.135.802	151.944	1.212.688	1.364.632	20,1%
Outgoing	36.355	487.680	524.035	45.109	517.201	562.310	7,3%
Dry bulk	67.772	2.047.395	2.115.168	35.243	1.806.723	1.841.966	-12,9%
Incoming	59.676	1.142.080	1.201.756	35.243	1.061.446	1.096.689	-8,7%
Outgoing	8.097	905.316	913.412	0	745.277	745.277	-18,4%
Containerized cargo	575.269	13.231.840	13.807.109	571.103	15.883.671	16.454.774	19,2%
Incoming	176.823	6.358.582	6.535.405	179.278	7.671.129	7.850.407	20,1%
Outgoing	398.446	6.873.258	7.271.704	391.824	8.212.542	8.604.366	18,3%
Non-containerized cargo	2.264.582	2.434.910	4.699.492	2.363.223	2.527.060	4.890.283	4,1%
Incoming	734.900	1.260.256	1.995.155	779.018	1.246.979	2.025.997	1,5%
Outgoing	1.529.682	1.174.655	2.704.336	1.584.205	1.280.081	2.864.286	5,9%
Total general cargo	2.839.850	15.666.750	18.506.601	2.934.326	18.410.731	21.345.056	15,3%
Incoming	911.722	7.618.837	8.530.560	958.297	8.918.108	9.876.404	15,8%
Outgoing	1.928.128	8.047.913	9.976.041	1.976.029	9.492.623	11.468.652	15,0%
Total throughput (tonnes)	3.386.315	23.014.612	26.400.927	3.392.717	25.242.771	28.635.488	8,5%
Incoming	1.355.754	12.843.436	14.199.190	1.263.568	13.889.337	15.152.905	6,7%
Outgoing	2.030.561	10.171.176	12.201.737	2.129.149	11.353.434	13.482.583	10,5%
Container traffic (TEU)	93.267	1.234.867	1.328.133	92.600	1.540.753	1.633.353	23,0%
Incoming	49.834	620.844	670.678	49.106	777.990	827.096	23,3%
Outgoing	43.433	614.023	657.455	43.494	762.764	806.258	22,6%

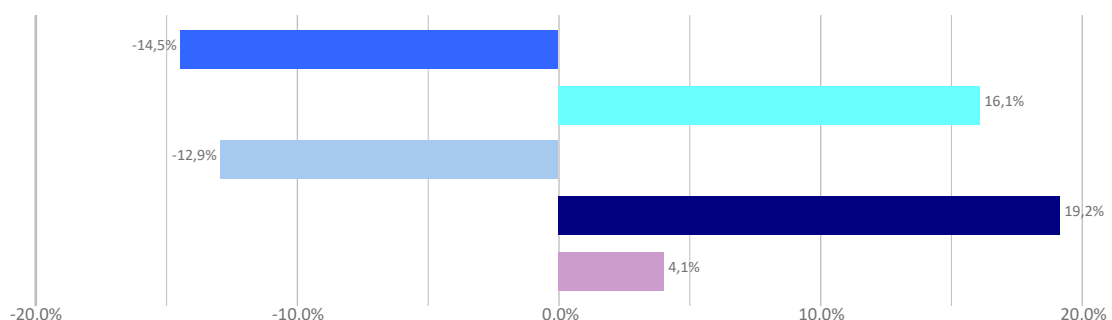
Distribution by type of packaging 2023



Distribution by type of packaging 2024



Annual growth by type of packaging



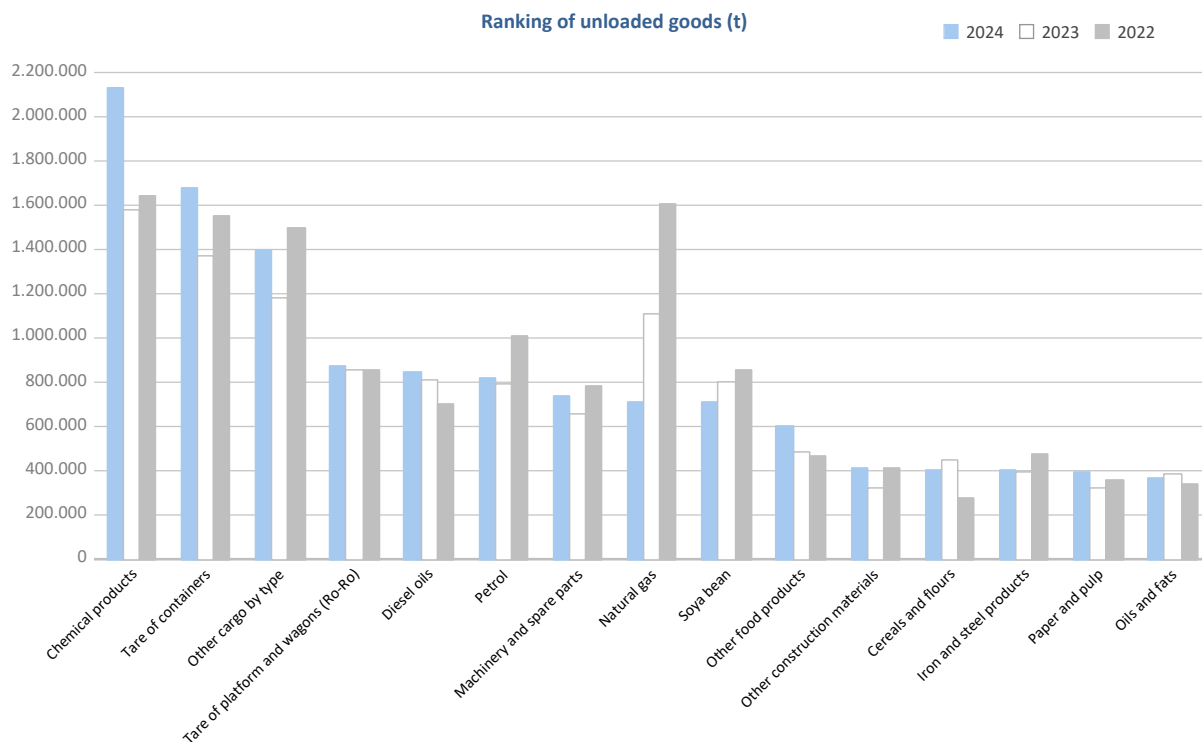
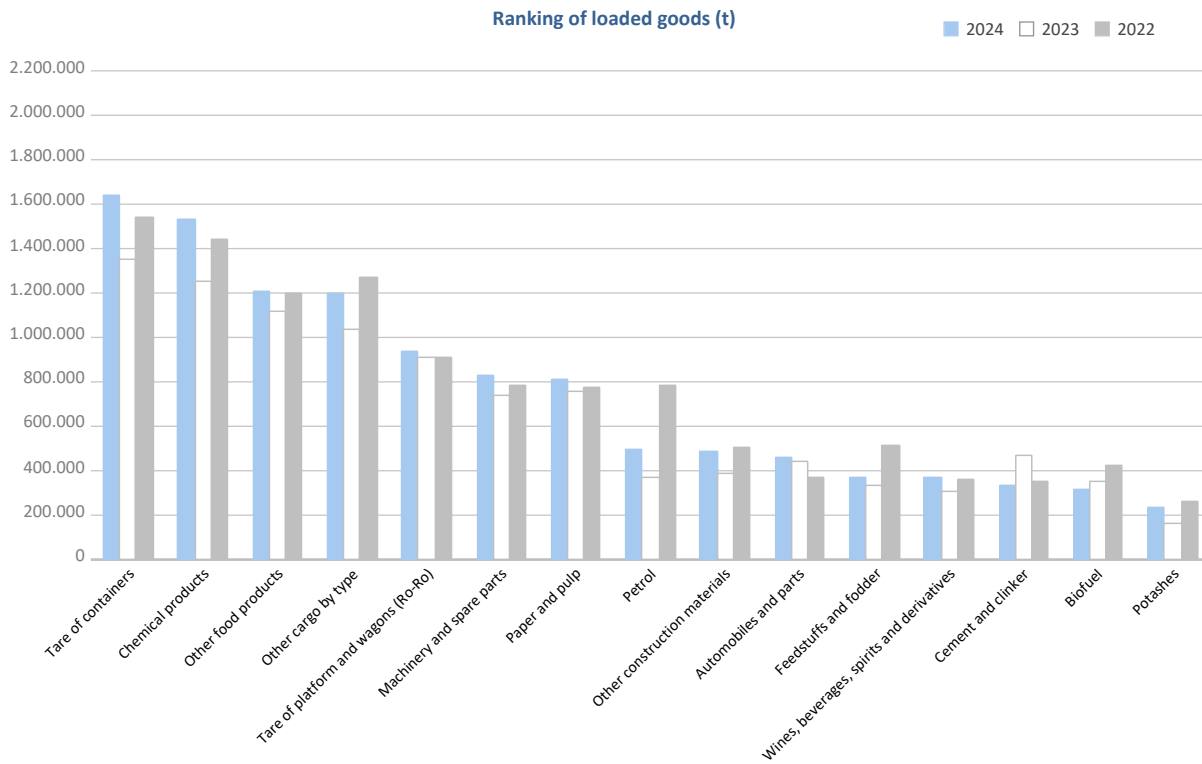
GOODS TRAFFIC

Goods by classification 4.3.7.	Monthly accumulated				% of total accum. 2024
	2023	2024	Diff. 24-23	%	
Tonnes	26.400.927	28.635.488	2.234.561	8,5%	100%
Energy	4.915.478	4.171.169	-744.309	-15,1%	14,6%
Crude oil	33	118	85	261,9%	0,0%
Fuel oil	599.314	364.982	-234.332	-39,1%	1,3%
Diesel oils	977.833	972.429	-5.404	-0,6%	3,4%
Petrol	1.158.198	1.312.280	154.082	13,3%	4,6%
Other petroleum products	104.233	137.897	33.664	32,3%	0,5%
Petroleum fuel gasses	22.287	26.318	4.032	18,1%	0,1%
Coal	32.927	27.170	-5.756	-17,5%	0,1%
Natural gas	1.315.906	774.871	-541.034	-41,1%	2,7%
Biofuel	704.749	555.103	-149.646	-21,2%	1,9%
Iron, steel and metallurgical products	1.217.751	1.288.535	70.784	5,8%	4,5%
Iron ore	2.015	3.286	1.271	63,0%	0,0%
Other minerals and metallic waste	169.172	273.186	104.014	61,5%	1,0%
Scrap iron	204.378	213.736	9.358	4,6%	0,7%
Iron and steel products	590.129	607.003	16.874	2,9%	2,1%
Other metallurgical products	252.057	191.324	-60.733	-24,1%	0,7%
Non-metallic minerals	453.429	459.509	6.080	1,3%	1,6%
Common salt	284.901	217.025	-67.876	-23,8%	0,8%
Other non-metallic minerals	168.528	242.484	73.956	43,9%	0,8%
Fertilizers	264.657	369.099	104.442	39,5%	1,3%
Phosphates	66	78	12	18,0%	0,0%
Potashes	166.059	247.449	81.390	49,0%	0,9%
Natural/artificial fertilizer	98.532	121.572	23.040	23,4%	0,4%
Chemicals	2.826.536	3.657.727	831.192	29,4%	12,8%
Chemical products	2.826.536	3.657.727	831.192	29,4%	12,8%
Construction materials	1.201.626	1.255.242	53.615	4,5%	4,4%
Asphalt	2.283	5.320	3.037	133,0%	0,0%
Cement and clinker	487.497	350.036	-137.461	-28,2%	1,2%
Other construction materials	711.846	899.886	188.040	26,4%	3,1%
Agriculture, livestock and food	5.360.118	5.834.610	474.492	8,9%	20,4%
Cereals and flours	504.472	517.810	13.338	2,6%	1,8%
Soya bean	904.663	775.687	-128.976	-14,3%	2,7%
Fruits, vegetables, pulses	226.004	280.782	54.778	24,2%	1,0%
Wines, beverages, spirits and derivatives	366.267	485.275	119.008	32,5%	1,7%
Canned goods	146.041	134.450	-11.591	-7,9%	0,5%
Tobacco, coffee, cocoa	343.785	465.340	121.554	35,4%	1,6%
Oils and fats	574.261	608.068	33.806	5,9%	2,1%
Other food products	1.604.282	1.808.685	204.403	12,7%	6,3%
Frozen fish	285.368	266.350	-19.018	-6,7%	0,9%
Feedstuffs and fodder	404.975	492.164	87.189	21,5%	1,7%
Other cargo	4.840.692	5.635.377	794.684	16,4%	19,7%
Timber	141.351	264.835	123.485	87,4%	0,9%
Paper and pulp	1.081.421	1.203.984	122.563	11,3%	4,2%
Machinery and spare parts	1.397.858	1.565.703	167.845	12,0%	5,5%
Other cargo by type	2.220.063	2.600.854	380.791	17,2%	9,1%
Vehicles and transport parts	5.320.640	5.964.221	643.580	12,1%	20,8%
Automobiles and parts	836.653	826.058	-10.595	-1,3%	2,9%
Tare of platform and wagons (Ro-Ro)	1.763.598	1.815.276	51.678	2,9%	6,3%
Tare of containers	2.720.389	3.322.887	602.497	22,1%	11,6%

GOODS TRAFFIC

Goods by classification 4.3.7.

Ranking of goods (tonnes)

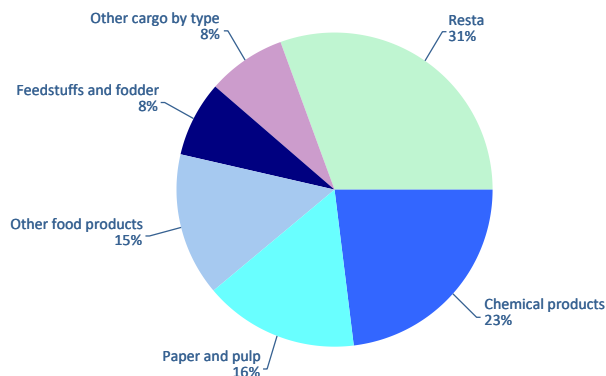


GOODS TRAFFIC

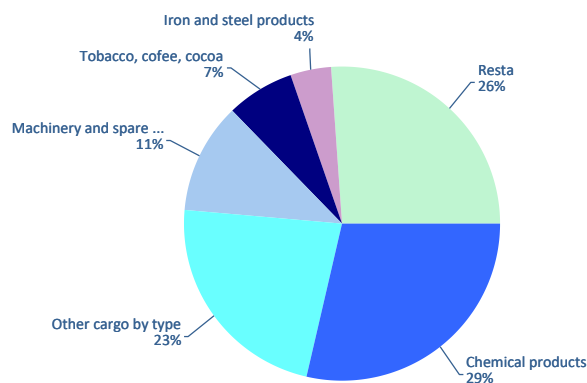
Containerized goods by classification 4.3.7. (Tares & transits not included)

Containerized goods classification	Loaded			Unloaded			Total monthly accumulated		
	2023	2024	%	2023	2024	%	2023	2024	%
Total tonnes (tares & transits not included)	3.284.116	3.376.542	2,8%	2.483.455	2.487.484	0,2%	5.767.571	5.864.026	1,7%
Chemical products	650.495	779.064	19,8%	655.638	713.154	8,8%	1.306.132	1.492.218	14,2%
Other cargo by type	266.429	268.247	0,7%	544.513	564.872	3,7%	810.942	833.119	2,7%
Paper and pulp	546.048	530.199	-2,9%	66.202	91.335	38,0%	612.250	621.534	1,5%
Other food products	534.932	496.670	-7,2%	43.706	25.388	-41,9%	578.639	522.058	-9,8%
Machinery and spare parts	196.576	188.718	-4,0%	340.594	284.774	-16,4%	537.169	473.493	-11,9%
Feedstuffs and fodder	258.038	269.061	4,3%	20.132	37.869	88,1%	278.170	306.930	10,3%
Tobacco, cofee, cocoa	32.679	32.839	0,5%	153.962	174.629	13,4%	186.641	207.468	11,2%
Other construction materials	115.987	120.274	3,7%	98.664	86.902	-11,9%	214.650	207.176	-3,5%
Wines, beverages, spirits and derivatives	162.301	158.311	-2,5%	16.104	16.869	4,8%	178.405	175.180	-1,8%
Iron and steel products	76.490	69.814	-8,7%	113.315	98.283	-13,3%	189.805	168.097	-11,4%
Automobiles and parts	56.836	52.077	-8,4%	81.396	92.795	14,0%	138.232	144.872	4,8%
Other minerals and metallic waste	74.385	94.380	26,9%	9.243	12.135	31,3%	83.628	106.515	27,4%
Other metallurgical products	38.663	34.044	-11,9%	72.191	55.761	-22,8%	110.854	89.804	-19,0%
Other non-metallic minerals	42.768	43.766	2,3%	31.411	35.632	13,4%	74.179	79.398	7,0%
Oils and fats	56.578	59.632	5,4%	18.779	14.674	-21,9%	75.357	74.306	-1,4%
Fruits, vegetables, pulses	13.318	12.209	-8,3%	65.849	53.258	-19,1%	79.167	65.467	-17,3%
Canned goods	31.404	28.260	-10,0%	37.799	30.538	-19,2%	69.202	58.798	-15,0%
Biofuel	39.523	46.253	17,0%	12.091	11.677	-3,4%	51.614	57.930	12,2%
Cereals and flours	23.951	17.243	-28,0%	15.709	16.944	7,9%	39.660	34.187	-13,8%
Natural/artificial fertilizer	16.577	19.263	16,2%	23.266	9.322	-59,9%	39.843	28.586	-28,3%
Scrap iron	7.692	11.193	45,5%	10.857	12.401	14,2%	18.548	23.593	27,2%
Frozen fish	3.855	870	-77,4%	17.404	17.036	-2,1%	21.259	17.907	-15,8%
Other petroleum products	8.166	9.690	18,7%	6.666	5.946	-10,8%	14.832	15.636	5,4%
Timber	4.758	4.765	0,1%	10.120	9.713	-4,0%	14.878	14.478	-2,7%
Common salt	11.687	13.099	12,1%	1.034	796	-23,0%	12.722	13.895	9,2%
Coal	1.501	1.441	-4,0%	13.128	7.107	-45,9%	14.628	8.548	-41,6%
Fuel oil	2.881	3.075	6,7%	1.823	2.828	55,1%	4.704	5.903	25,5%
Cement and clinker	6.045	5.369	-11,2%	24	28	16,2%	6.070	5.398	-11,1%
Petroleum fuel gasses	2.096	3.360	60,3%	303	243	-19,7%	2.400	3.603	50,2%
Soya bean	0	7		345	3.452	900,2%	345	3.459	902,3%
Asphalt	1.247	3.154	153,0%	0	20		1.247	3.174	154,6%
Potashes	34	80	135,3%	855	1.002	17,1%	889	1.081	21,6%
Crude oil	11	23	116,2%	22	75	240,9%	33	98	200,5%
Petrol	0	36		0	22		0	58	
Phosphates	66	33	-49,6%	0	0		66	33	-49,6%
Iron ore	25	25	3,3%	312	2	-99,2%	337	28	-91,7%
Diesel oils	73	0		0	0		73	0	
Natural gas	2	0		0	0		2	0	

Distribution of main goods Loaded 2024



Distribution of main goods Unloaded 2024

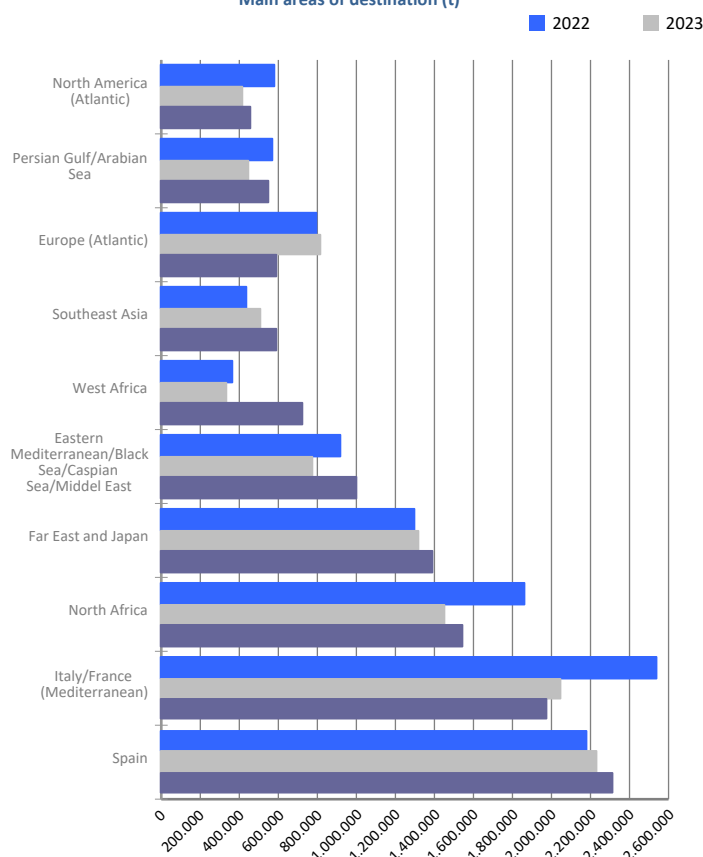


MARITIME TRAFFIC BY ORIGIN/DESTINATION

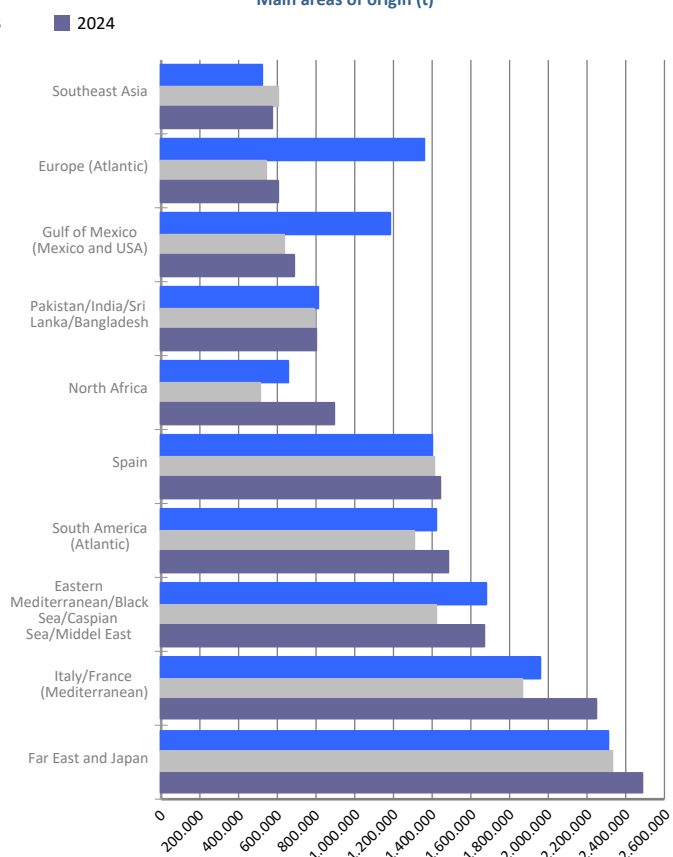
Geographical areas. Tonnes

Geographical areas	Monthly accumulated				% of total accum. 2024
	2023	2024	Diff. 24-23	%	
Tonnes	26.400.927	28.635.488	2.234.561	8,5%	100%
Italy/France (Mediterranean)	3.911.872	4.224.501	312.629	8,0%	14,8%
Far East and Japan	3.649.559	3.880.261	230.702	6,3%	13,6%
Spain	3.650.061	3.758.427	108.365	3,0%	13,1%
Eastern Mediterranean/Black Sea/Caspian Sea/Middel	2.199.189	2.672.113	472.924	21,5%	9,3%
North Africa	1.967.355	2.442.809	475.454	24,2%	8,5%
South America (Atlantic)	1.514.665	1.725.062	210.397	13,9%	6,0%
Pakistan/India/Sri Lanka/Bangladesh	1.128.174	1.206.926	78.752	7,0%	4,2%
Europe (Atlantic)	1.363.688	1.195.215	-168.473	-12,4%	4,2%
Southeast Asia	1.118.456	1.168.029	49.573	4,4%	4,1%
West Africa	726.938	1.095.599	368.661	50,7%	3,8%
Persian Gulf/Arabian Sea	1.504.682	1.037.857	-466.826	-31,0%	3,6%
Gulf of Mexico (Mexico and USA)	1.012.674	1.032.625	19.951	2,0%	3,6%
North America (Atlantic)	630.541	765.717	135.176	21,4%	2,7%
Red Sea	413.120	698.523	285.403	69,1%	2,4%
Central America and Caribbean	460.930	471.316	10.386	2,3%	1,6%
Unknown area (Tare of empty containers)	194.136	342.595	148.459	76,5%	1,2%
Canada (Atlantic) and Great Lakes	472.309	263.733	-208.576	-44,2%	0,9%
South-Eastern Africa/Indian Ocean	157.740	250.398	92.658	58,7%	0,9%
South America (Pacific)	200.151	213.060	12.909	6,4%	0,7%
North America (Pacific)	33.257	96.997	63.739	191,7%	0,3%
Australia, New Zealand/Pacific Islands	91.429	93.727	2.298	2,5%	0,3%

Main areas of destination (t)



Main areas of origin (t)

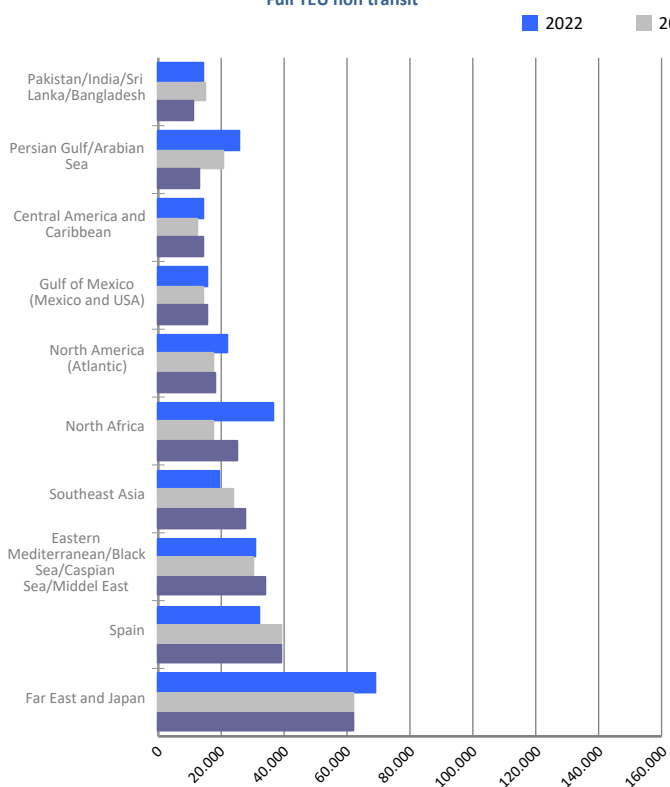


MARITIME TRAFFIC BY ORIGIN/DESTINATION

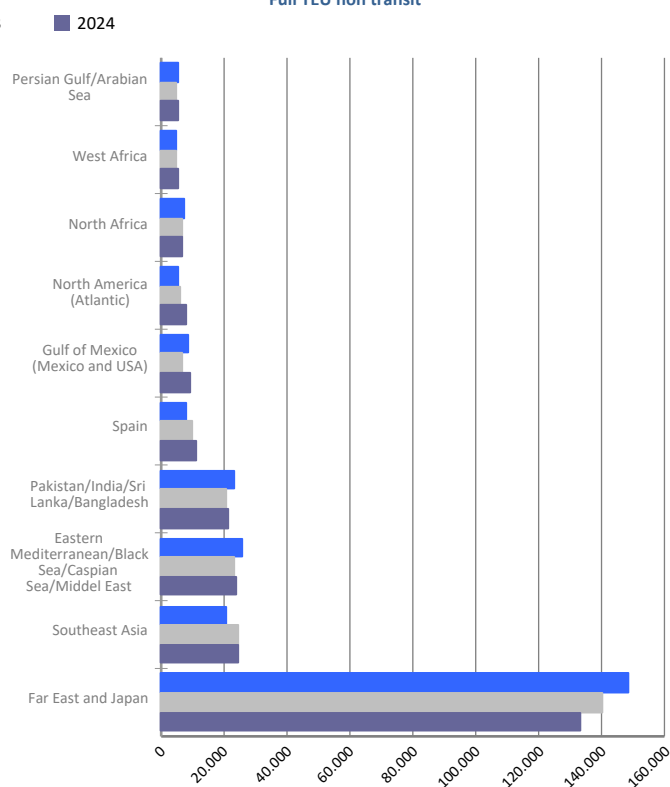
Geographical areas. Full TEU non transit

Geographical areas	Monthly accumulated				% of total accum. 2024
	2023	2024	Diff. 24-23	%	
Full TEU non transit	585.624	591.154	5.531	0,9%	100%
Far East and Japan	202.198	195.439	-6.759	-3,3%	33,1%
Eastern Mediterranean/Black Sea/Caspian Sea/Middel	53.792	57.972	4.180	7,8%	9,8%
Southeast Asia	48.476	52.048	3.573	7,4%	8,8%
Spain	49.130	50.015	885	1,8%	8,5%
North Africa	24.039	32.234	8.195	34,1%	5,5%
Pakistan/India/Sri Lanka/Bangladesh	35.723	32.189	-3.534	-9,9%	5,4%
North America (Atlantic)	23.671	25.816	2.145	9,1%	4,4%
Gulf of Mexico (Mexico and USA)	21.244	24.927	3.683	17,3%	4,2%
Persian Gulf/Arabian Sea	25.624	18.623	-7.001	-27,3%	3,2%
Central America and Caribbean	16.030	16.826	796	5,0%	2,8%
South America (Atlantic)	14.319	14.609	291	2,0%	2,5%
West Africa	12.560	14.039	1.479	11,8%	2,4%
Red Sea	12.910	12.781	-129	-1,0%	2,2%
South America (Pacific)	12.624	12.703	79	0,6%	2,1%
South-Eastern Africa/Indian Ocean	10.167	9.823	-344	-3,4%	1,7%
Canada (Atlantic) and Great Lakes	5.788	6.002	214	3,7%	1,0%
Italy/France (Mediterranean)	8.065	4.724	-3.341	-41,4%	0,8%
Australia, New Zealand/Pacific Islands	4.767	4.721	-46	-1,0%	0,8%
North America (Pacific)	2.508	3.261	753	30,0%	0,6%
Europe (Atlantic)	1.992	2.405	413	20,7%	0,4%

Main areas of destination
Full TEU non transit



Main areas of origin
Full TEU non transit

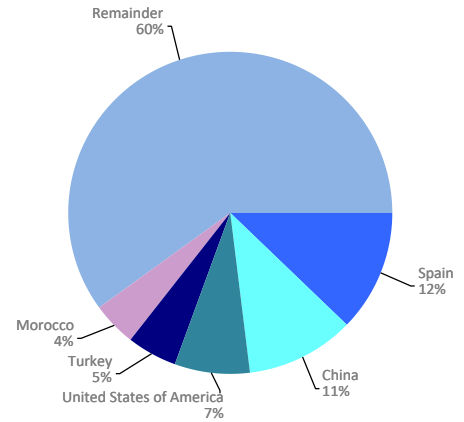


MARITIME TRAFFIC BY ORIGIN/DESTINATION

Ranking countries. Full TEU non transit

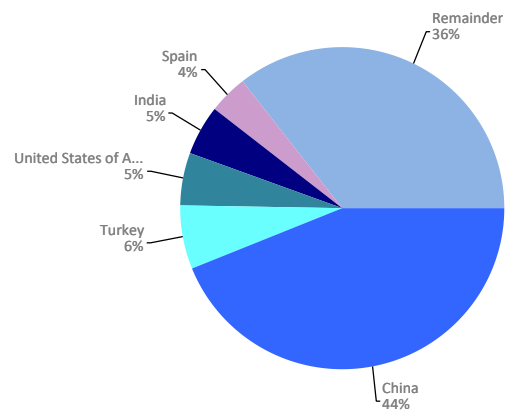
Loaded	Full TEU	% 24-23	% a/packaging
Spain	39.056	-0,7%	12,1%
China	35.332	3,6%	11,0%
United States of America	24.079	7,2%	7,5%
Turkey	15.734	9,6%	4,9%
Morocco	14.061	60,7%	4,4%
Mexico	13.445	14,9%	4,2%
Japan	10.726	-4,8%	3,3%
United Arab Emirates	8.640	-40,1%	2,7%
India	8.186	-35,0%	2,5%
Saudi Arabia	7.889	-6,2%	2,5%
Vietnam	7.847	53,4%	2,4%
Malaysia	7.592	-0,3%	2,4%
Egypt	7.064	43,5%	2,2%
Korea (South)	6.751	-9,9%	2,1%
Israel	6.537	28,8%	2,0%
Remainder	108.666	1,0%	33,8%
TOTAL	321.604	2,0%	100%

Main countries. Loaded



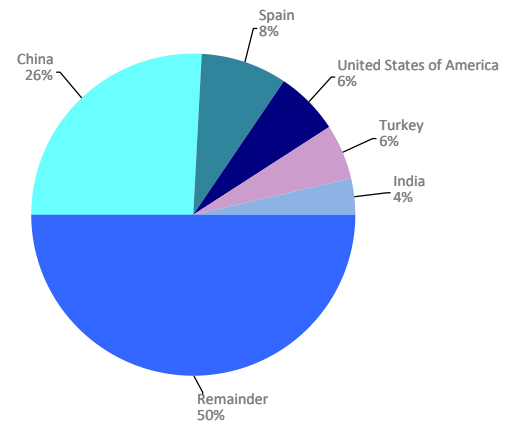
Unloaded	Full TEU	% 24-23	% a/packaging
China	118.625	-3,8%	44,0%
Turkey	17.084	5,0%	6,3%
United States of America	14.345	21,7%	5,3%
India	12.827	8,6%	4,8%
Spain	10.959	11,7%	4,1%
Vietnam	10.866	-3,5%	4,0%
Korea (South)	9.013	-12,3%	3,3%
Saudi Arabia	5.525	22,8%	2,0%
Egypt	5.292	1,6%	2,0%
Thailand	4.323	33,9%	1,6%
Bangladesh	4.286	-24,0%	1,6%
Greece	3.859	-2,2%	1,4%
Mexico	3.575	27,5%	1,3%
Brazil	3.545	23,0%	1,3%
Cote d'Ivoire	3.115	57,6%	1,2%
Remainder	42.315	-7,5%	15,7%
TOTAL	269.551	-0,3%	100%

Main countries. Unloaded



Total	Full TEU	% 24-23	% a/packaging
China	153.957	-2,2%	26,0%
Spain	50.015	1,8%	8,5%
United States of America	38.424	12,2%	6,5%
Turkey	32.818	7,1%	5,6%
India	21.013	-13,9%	3,6%
Vietnam	18.713	14,3%	3,2%
Mexico	17.020	17,3%	2,9%
Korea (South)	15.764	-11,3%	2,7%
Morocco	15.238	58,7%	2,6%
Saudi Arabia	13.414	3,9%	2,3%
Japan	13.239	-7,5%	2,2%
Egypt	12.355	22,0%	2,1%
Greece	10.234	7,3%	1,7%
United Arab Emirates	9.951	-37,1%	1,7%
Brazil	9.399	13,3%	1,6%
Remainder	159.603	-0,6%	27,0%
TOTAL	591.154	0,9%	100%

Main countries. Total



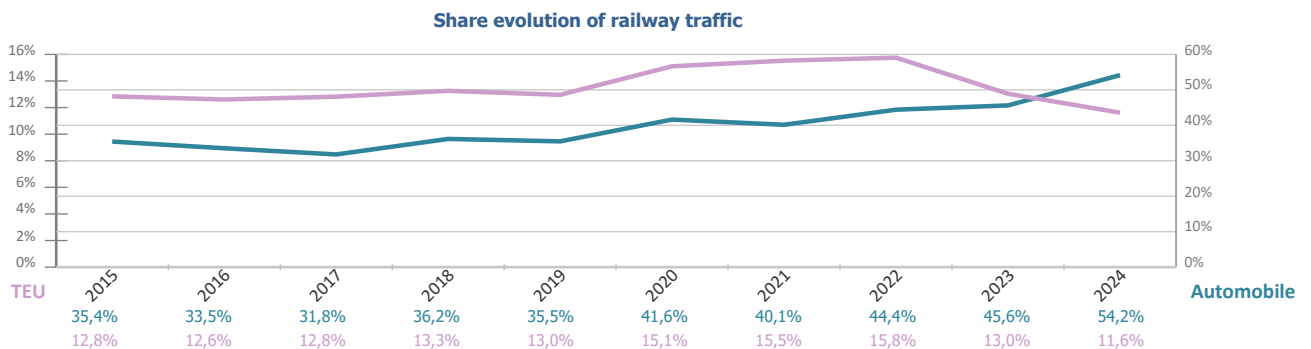
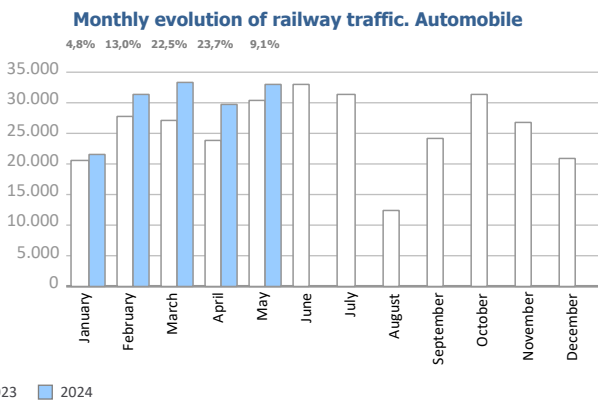
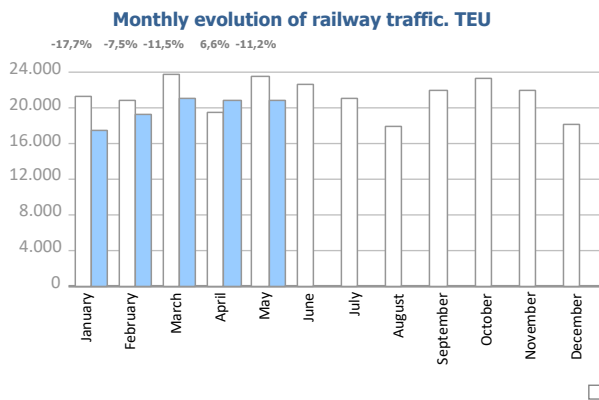
RAILWAY TRAFFIC

Monthly evolution of railway traffic. TEU

Monthly evolution of railway traffic	TEU 2023			TEU 2024			%		% of total port traffic 2024
	Loaded	Unloaded	Total	Loaded	Unloaded	Total	Monthly	Accumulated	
January	10.946	10.351	21.297	7.901	9.633	17.534	-17,7%	-17,7%	11,4%
February	10.012	10.850	20.862	8.751	10.545	19.296	-7,5%	-12,6%	12,2%
March	11.720	12.120	23.840	9.664	11.438	21.102	-11,5%	-12,2%	11,1%
April	9.632	9.846	19.478	10.070	10.684	20.754	6,6%	-7,9%	12,4%
May	12.232	11.299	23.531	9.880	11.019	20.899	-11,2%	-8,6%	11,0%
June	11.297	11.397	22.694						
July	10.049	10.979	21.028						
August	8.856	9.030	17.886						
September	10.815	11.129	21.944						
October	11.031	12.246	23.277						
November	10.067	11.795	21.862						
December	8.192	9.931	18.122						
Total	124.847	130.971	255.818	46.266	53.319	99.585			11,6%

Monthly evolution of railway traffic. Automobile

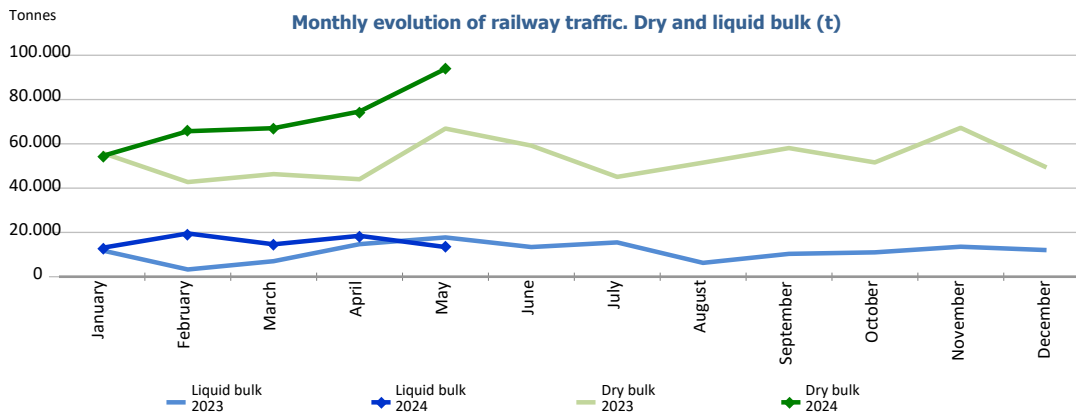
Monthly evolution of railway traffic	Automobile 2023			Automobile 2024			%		% of total port traffic 2024
	Loaded	Unloaded	Total	Loaded	Unloaded	Total	Monthly	Accumulated	
January	4.150	16.267	20.417	2.696	18.708	21.404	4,8%	4,8%	52,4%
February	5.096	22.553	27.649	4.150	27.099	31.249	13,0%	9,5%	61,5%
March	3.567	23.677	27.244	4.458	28.926	33.384	22,5%	14,2%	51,9%
April	4.515	19.415	23.930	3.573	26.030	29.603	23,7%	16,5%	55,4%
May	5.929	24.358	30.287	4.399	28.658	33.057	9,1%	14,8%	50,6%
June	5.878	27.021	32.899						
July	6.807	24.450	31.257						
August	1.982	10.394	12.376						
September	5.584	18.633	24.217						
October	6.117	25.138	31.255						
November	5.350	21.525	26.875						
December	3.150	17.854	21.004						
Total	58.125	251.285	309.410	19.276	129.421	148.697			54,2%



RAILWAY TRAFFIC

Monthly evolution of railway traffic. Dry and liquid bulk. Tonnes

Monthly evolution of railway traffic	Tonnes 2023			Tonnes 2024			%	
	Dry bulk	Liquid bulk	Total	Dry bulk	Liquid bulk	Total	Monthly	Accumulated
January	55.964	11.888	67.852	54.457	13.024	67.481	-0,5%	-0,5%
February	42.746	3.263	46.009	65.710	19.534	85.244	85,3%	34,1%
March	46.334	7.014	53.348	67.073	14.630	81.703	53,2%	40,2%
April	44.027	14.701	58.728	74.604	18.473	93.077	58,5%	45,0%
May	66.894	17.738	84.632	93.873	13.397	107.270	26,7%	40,0%
June	59.200	13.398	72.598					
July	45.081	15.485	60.566					
August	51.511	6.251	57.762					
September	58.090	10.320	68.410					
October	51.617	10.995	62.612					
November	67.236	13.547	80.783					
December	49.345	12.016	61.361					
Total	638.045	136.616	774.661	355.717	79.058	434.775		



Railway traffic.

Railway gauge traffic (u)	Monthly accumulated		%	% of accumulated total 2024
	2023	2024		
Iberian gauge	3.050	3.014	-1,2%	61,4%
UIC	167	1.526	813,8%	31,1%
FGC	1.153	369	-68,0%	7,5%
Total	4.370	4.909	12,3%	100%

