

Port of Barcelona traffic statistics

Accumulated data August 2024

Statistics Service

Index

Traffic indicators

Total traffic	3
Main indicators	4
Breakdown of total traffic	5
Breakdown of traffic in transit	6
Monthly evolution of traffic	7

Container traffic

TEU evolution	8
Container traffic (TEU)	9

Passenger traffic

Passenger traffic	10
Passenger classification	11

Automobile traffic

Automobile traffic	12
--------------------	----

Short Sea Shipping traffic (SSS)

SSS Goods classification	13
SSS General cargo and Motorways of the sea (MoS)	14
SSS Ranking countries	15

Vessel traffic

Vessel traffic	16
----------------	----

Goods traffic

Mode of packaging and navigation	17
Goods by classification 4.3.7.	18
Goods ranking	19
Containerized goods by classification 4.3.7.	20

Maritime traffic by origin/destination

Geographical areas. Tonnes	21
Geographical areas. Full TEU non transit	22
Ranqing countries. Full TEU non transit	23

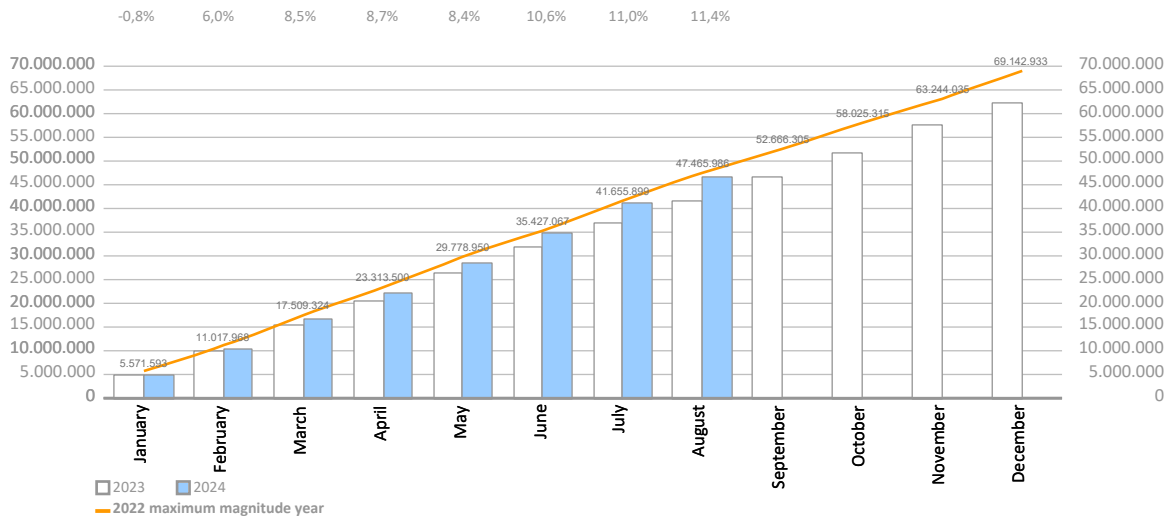
Railway traffic

Evolution of railway traffic (TEU and automobile)	24
Evolution of railway traffic (Solid and liquid bulk)	25
Railway gauge traffic	25

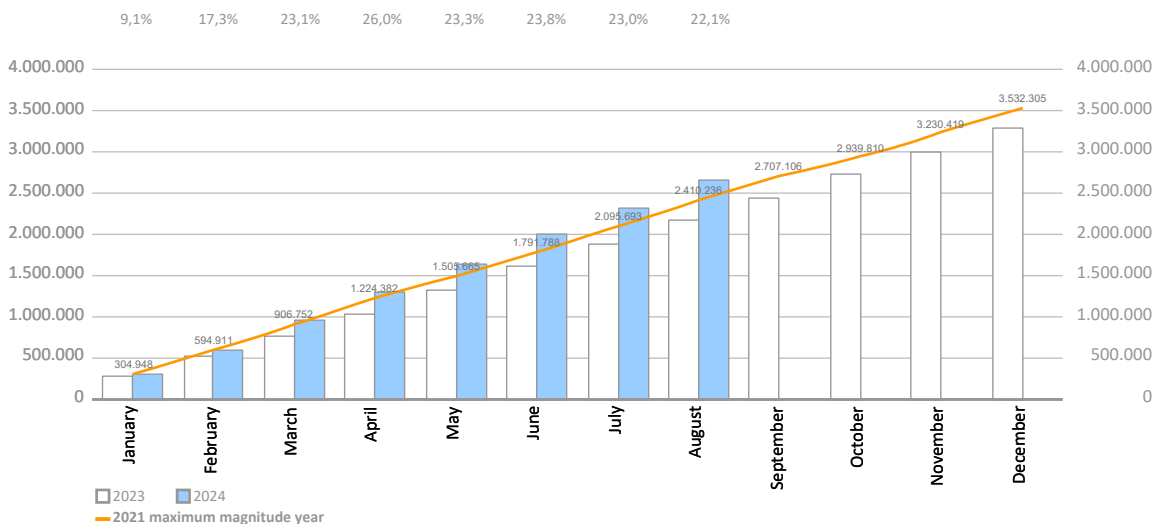
TRAFFIC INDICATORS

Total traffic	Monthly accumulated				% 24-23 accum. July	% 24-23 accum. June	Total traffic 2023
	2023	2024	Diff. 24-23	%			
Total throughput (tonnes)	41.749.562	46.518.728	4.769.166	11,4%	11,0%	10,6%	62.427.890
Supplies	1.095.115	1.214.900	119.786	10,9%	9,1%	7,2%	1.629.500
Fishing	1.222	2.145	923	75,6%	79,5%	52,5%	1.544
TOTAL TRAFFIC (tonnes)	42.845.899	47.735.774	4.889.875	11,4%	11,0%	10,5%	64.058.934
TEU	2.179.211	2.660.122	480.911	22,1%	23,0%	23,8%	3.280.239
UTI	285.672	293.460	7.789	2,7%	3,1%	3,1%	416.003
Automobiles (units)	531.515	467.590	-63.925	-12,0%	-8,6%	-5,5%	790.318
Vessels (units)	5.859	5.656	-203	-3,5%	-2,8%	-2,0%	8.766
Railway traffic (units)	6.875	7.606	731	10,6%	11,1%	11,7%	10.439
Cruise passengers (units)	2.261.792	2.372.060	110.268	4,9%	3,8%	6,2%	3.569.125
Ferry passengers (units)	1.301.503	1.312.115	10.612	0,8%	0,6%	3,1%	1.735.495
Automobile passengers (units)	372.706	384.433	11.727	3,1%	3,2%	6,7%	515.293

Monthly evolution of the accumulated traffic of goods. Tonnes



Monthly evolution of the accumulated traffic of goods. TEU



TRAFFIC INDICATORS

Main indicators	Monthly accumulated				Last 12 months	Total traffic 2023	% 12 months-2023
	2023	2024	Diff. 24-23	%			
Goods indicators by navigation and operation (tonnes)							
Navigation (t)	41.749.562	46.518.728	4.769.166	11,4%	67.197.056	62.427.890	7,6%
Domestic	5.567.579	5.788.456	220.878	4,0%	8.249.930	8.029.052	2,8%
Foreign	36.181.984	40.730.272	4.548.288	12,6%	58.947.126	54.398.838	8,4%
Operation (t)	41.749.562	46.518.728	4.769.166	11,4%	67.197.056	62.427.890	7,6%
Loaded	13.078.841	13.323.440	244.599	1,9%	19.407.855	19.163.256	1,3%
Unloaded	15.208.340	14.687.642	-520.698	-3,4%	22.147.003	22.667.702	-2,3%
Transit	13.462.382	18.507.647	5.045.265	37,5%	25.642.197	20.596.933	24,5%
Goods indicators by main units							
Containers (TEU)	2.179.211	2.660.122	480.911	22,1%	3.761.150	3.280.239	14,7%
TEU O/D	1.311.423	1.415.610	104.187	7,9%	2.064.549	1.960.362	5,3%
TEU transit	867.788	1.244.512	376.724	43,4%	1.696.602	1.319.878	28,5%
Containerized tonnes	22.224.709	26.226.033	4.001.325	18,0%	37.527.418	33.526.094	11,9%
Level of containerization	74,28%	76,86%			76,65%	74,90%	
Passengers (u)	3.563.295	3.684.175	120.880	3,4%	5.425.500	5.304.620	2,3%
Regular line	1.301.503	1.312.115	10.612	0,8%	1.746.107	1.735.495	0,6%
Pleasure cruises	2.261.792	2.372.060	110.268	4,9%	3.679.393	3.569.125	3,1%
Automobiles (u)	531.515	467.590	-63.925	-12,0%	726.393	790.318	-8,1%
Loaded	283.603	295.314	11.711	4,1%	424.143	412.432	2,8%
Unloaded	166.631	100.360	-66.271	-39,8%	189.311	255.582	-25,9%
Transit	81.281	71.916	-9.365	-11,5%	112.939	122.304	-7,7%
Vessels (u)	5.859	5.656	-203	-3,5%	8.563	8.766	-2,3%
Number of calls	5.859	5.656	-203	-3,5%	8.563	8.766	-2,3%
GT	246.482.930	242.151.840	-4.331.090	-1,8%	369.969.626	374.300.716	-1,2%
Average tonnes by vessel	7.126	8.225	1.099	15,4%	7.847	7.122	10,2%
UTI	285.672	293.460	7.789	2,7%	423.791	416.003	1,9%
Domestic	182.666	183.594	928	0,5%	260.457	259.529	0,4%
% Full	61,8%	62,1%			62,1%	61,9%	
Foreign	103.006	109.866	6.861	6,7%	163.334	156.474	4,4%
% Full	90,9%	89,5%			89,5%	90,4%	

TRAFFIC INDICATORS

Breakdown of total traffic (tonnes)	Monthly accumulated				% 24-23 accum. July	% 24-23 accum. June	% of total accum. 2024
	2023	2024	Diff. 24-23	%			
Goods indicators by type of packaging (t)	41.749.562	46.518.728	4.769.166	11,4%	11,0%	10,6%	100%
Liquid bulk	8.467.459	9.399.501	932.042	11,0%	5,5%	1,9%	20,2%
Hydrocarbons	6.079.449	6.221.065	141.616	2,3%	-4,6%	-7,4%	13,4%
Petrol	1.764.319	2.817.839	1.053.521	59,7%	47,8%	39,4%	6,1%
Diesel oils	1.424.915	1.466.570	41.655	2,9%	-4,8%	-6,0%	3,2%
Natural gas	1.926.458	1.114.746	-811.712	-42,1%	-41,1%	-41,2%	2,4%
Fuel oil	836.941	636.867	-200.074	-23,9%	-35,0%	-32,8%	1,4%
Other petroleum products	112.690	170.842	58.152	51,6%	49,0%	38,5%	0,4%
Remainder	14.127	14.200	73	0,5%	0,7%	0,9%	0,0%
Other liquid bulk	2.388.010	3.178.437	790.426	33,1%	31,7%	24,8%	6,8%
Chemical products	847.466	1.735.137	887.671	104,7%	96,9%	84,2%	3,7%
Biofuel	943.172	748.811	-194.361	-20,6%	-20,1%	-18,5%	1,6%
Oils and fats	547.296	602.435	55.139	10,1%	14,7%	-3,7%	1,3%
Natural/artificial fertilizer	40.351	49.232	8.880	22,0%	22,0%	18,0%	0,1%
Other cargo by type	3.808	32.993	29.185	766,4%	0,0%	0,0%	0,1%
Remainder	5.917	9.828	3.912	66,1%	58,9%	58,9%	0,0%
Dry bulk	3.360.204	2.999.315	-360.889	-10,7%	-9,5%	-13,3%	6,4%
Special installation	3.165.342	2.815.104	-350.238	-11,1%	-9,8%	-14,7%	6,1%
Soya bean	1.074.333	1.018.562	-55.771	-5,2%	-0,2%	-9,6%	2,2%
Cement and clinker	748.405	513.315	-235.090	-31,4%	-30,1%	-37,3%	1,1%
Cereals and flours	602.760	508.795	-93.965	-15,6%	-12,5%	-3,2%	1,1%
Potashes	315.737	414.308	98.571	31,2%	32,5%	30,0%	0,9%
Common salt	403.929	342.219	-61.710	-15,3%	-23,5%	-39,4%	0,7%
Remainder	20.179	17.905	-2.273	-11,3%	-24,1%	-24,1%	0,0%
Without special installation	194.862	184.211	-10.651	-5,5%	-5,6%	10,6%	0,4%
Scrap iron	133.410	115.270	-18.139	-13,6%	-11,1%	4,3%	0,2%
Other non-metallic minerals	31.730	24.333	-7.398	-23,3%	-36,7%	-34,4%	0,1%
Chemical products	12.950	16.045	3.095	23,9%	23,9%	46,1%	0,0%
Other minerals and metallic waste	10.916	13.400	2.484	22,8%	22,8%	131,0%	0,0%
Other cargo by type	0	9.251	9.251	0,0%	0,0%	0,0%	0,0%
Remainder	5.856	5.912	56	1,0%	1,0%	89,9%	0,0%
General cargo	29.921.900	34.119.912	4.198.013	14,0%	14,9%	16,1%	73,3%
Containerized	22.224.709	26.226.033	4.001.325	18,0%	18,9%	20,3%	56,4%
Tare of containers	4.456.251	5.395.732	939.480	21,1%	22,1%	22,9%	11,6%
Chemical products	3.344.721	4.273.200	928.478	27,8%	25,4%	23,3%	9,2%
Other cargo by type	2.397.219	2.968.118	570.899	23,8%	23,2%	24,4%	6,4%
Other food products	2.387.953	2.169.227	-218.727	-9,2%	-0,7%	8,7%	4,7%
Machinery and spare parts	1.453.417	1.801.581	348.164	24,0%	21,1%	18,9%	3,9%
Remainder	8.185.147	9.618.176	1.433.029	17,5%	18,4%	20,0%	20,7%
Non-containerized	7.697.191	7.893.879	196.688	2,6%	3,5%	3,8%	17,0%
Tare of platform and wagons (Ro-Ro)	2.975.209	3.036.201	60.992	2,1%	2,4%	2,3%	6,5%
Other cargo by type	1.227.110	1.319.271	92.161	7,5%	7,3%	7,4%	2,8%
Machinery and spare parts	750.917	790.157	39.239	5,2%	6,0%	7,1%	1,7%
Automobiles and parts	884.234	735.872	-148.362	-16,8%	-13,5%	-10,4%	1,6%
Other food products	374.409	374.141	-268	-0,1%	0,8%	0,7%	0,8%
Remainder	1.485.311	1.638.237	152.925	10,3%	12,3%	11,7%	3,5%

TRAFFIC INDICATORS

Breakdown of traffic in transit (tonnes)	Monthly accumulated				% 24-23 accum. July	% 24-23 accum. June	% of total accum. 2024
	2023	2024	Diff. 24-23	%			
Goods indicators by type of packaging (t)	13.462.382	18.507.647	5.045.265	37,5%	38,8%	40,3%	100%
Liquid bulk	2.805.369	4.510.526	1.705.157	60,8%	50,3%	40,4%	24,4%
Hydrocarbons	1.756.919	2.766.096	1.009.178	57,4%	44,6%	31,2%	14,9%
Petrol	766.967	1.792.382	1.025.415	133,7%	107,8%	85,7%	9,7%
Fuel oil	577.636	507.652	-69.984	-12,1%	-20,0%	-18,4%	2,7%
Diesel oils	412.316	378.346	-33.970	-8,2%	-11,1%	-14,0%	2,0%
Natural gas	0	71.124	71.124				0,4%
Other petroleum products	0	16.593	16.593				0,1%
Remainder	0	0	0				0,0%
Other liquid bulk	1.048.450	1.744.430	695.980	66,4%	59,9%	54,8%	9,4%
Chemical products	410.227	1.145.500	735.273	179,2%	158,2%	132,1%	6,2%
Biofuel	619.136	554.283	-64.852	-10,5%	-7,7%	-4,2%	3,0%
Oils and fats	19.087	33.249	14.162	74,2%	74,2%	-8,8%	0,2%
Other cargo by type	0	11.397	11.397				0,1%
Remainder	0	0	0				0,0%
Dry bulk	19.081	0	-19.081				0,0%
Special installation	19.081	0	-19.081				0,0%
Cereals and flours	12.698	0	-12.698				0,0%
Potashes	6.383	0	-6.383				0,0%
Remainder	0	0	0				0,0%
Without special installation	0	0	0				0,0%
Remainder	0	0	0				0,0%
General cargo	10.637.932	13.997.121	3.359.189	31,6%	35,9%	40,3%	75,6%
Containerized	10.345.513	13.630.951	3.285.438	31,8%	36,1%	40,4%	73,7%
Tare of containers	1.792.490	2.531.182	738.692	41,2%	46,5%	48,6%	13,7%
Chemical products	1.270.460	1.820.453	549.993	43,3%	40,0%	37,4%	9,8%
Other cargo by type	1.044.949	1.516.546	471.596	45,1%	46,0%	48,1%	8,2%
Other food products	1.516.004	1.339.990	-176.014	-11,6%	3,5%	20,9%	7,2%
Other construction materials	636.126	1.036.051	399.925	62,9%	60,1%	57,1%	5,6%
Remainder	4.085.483	5.386.728	1.301.245	31,9%	35,2%	39,7%	29,1%
Non-containerized	292.419	366.170	73.751	25,2%	32,0%	38,1%	2,0%
Automobiles and parts	132.673	127.149	-5.525	-4,2%	3,2%	8,2%	0,7%
Tare of platform and wagons (Ro-Ro)	37.237	61.640	24.404	65,5%	68,6%	71,2%	0,3%
Other cargo by type	35.091	49.834	14.744	42,0%	40,1%	36,5%	0,3%
Oils and fats	11.088	36.547	25.459	229,6%	273,3%	402,2%	0,2%
Machinery and spare parts	45.535	34.672	-10.863	-23,9%	-20,1%	-17,8%	0,2%
Remainder	30.796	56.328	25.532	82,9%	85,7%	92,9%	0,3%

TRAFFIC INDICATORS

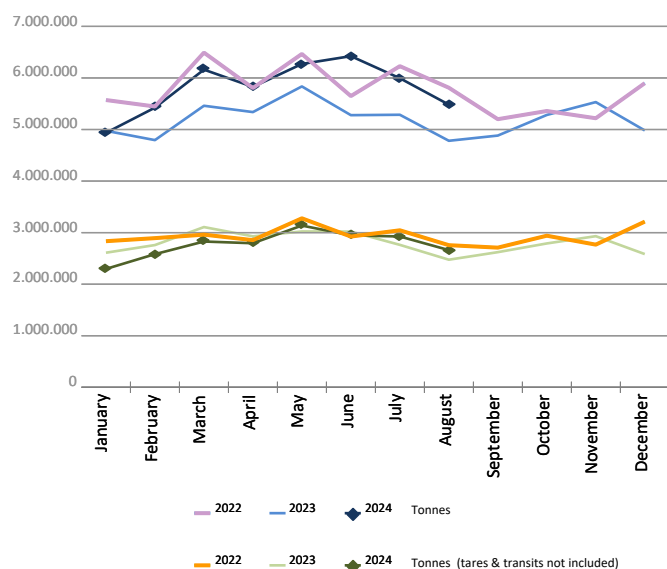
Monthly evolution of traffic. Tonnes

Monthly evolution of traffic	Total tonnes			%		Tonnes (tares & transits not included)			%	
	2023	2024	Diff. 24-23	Monthly	Accumulated	2023	2024	Diff. 24-23	Monthly	Accumulated
January	4.974.831	4.935.516	-39.315	-0,8%	-0,8%	2.610.318	2.296.181	-314.137	-12,0%	-12,0%
February	4.794.197	5.423.584	629.387	13,1%	6,0%	2.759.119	2.582.203	-176.916	-6,4%	-9,1%
March	5.460.878	6.161.555	700.676	12,8%	8,5%	3.107.624	2.827.711	-279.913	-9,0%	-9,1%
April	5.337.938	5.826.633	488.695	9,2%	8,7%	2.928.109	2.794.385	-133.724	-4,6%	-7,9%
May	5.835.621	6.271.292	435.672	7,5%	8,4%	3.022.618	3.136.760	114.142	3,8%	-5,5%
June	5.278.336	6.423.165	1.144.829	21,7%	10,6%	3.020.382	2.948.017	-72.365	-2,4%	-4,9%
July	5.286.327	5.994.448	708.121	13,4%	11,0%	2.762.708	2.925.340	162.632	5,9%	-3,5%
August	4.781.434	5.482.534	701.100	14,7%	11,4%	2.474.574	2.661.375	186.802	7,5%	-2,3%
September	4.882.475					2.621.228				
October	5.282.217					2.789.825				
November	5.531.706					2.931.465				
December	4.981.930					2.583.935				
Total	62.427.890	46.518.728				33.611.903	22.171.971			

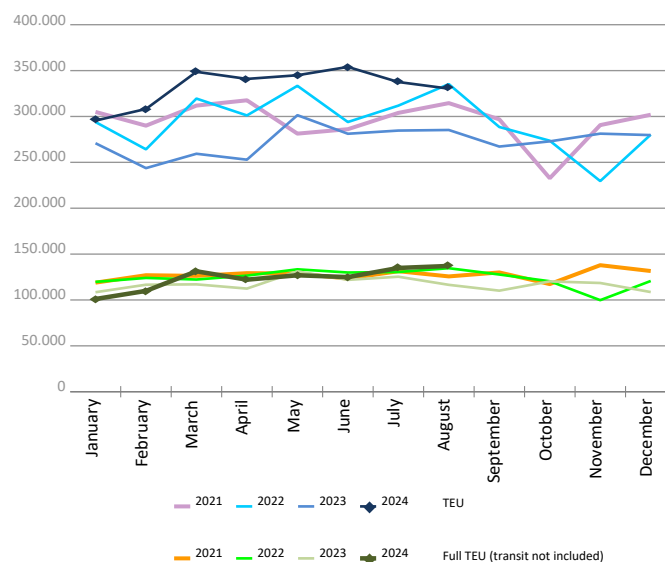
Monthly evolution of traffic. TEU

Monthly evolution of traffic	Total TEU			%		Full TEU (transit not included)			%	
	2023	2024	Diff. 24-23	Monthly	Accumulated	2023	2024	Diff. 24-23	Monthly	Accumulated
January	270.816	295.528	24.712	9,1%	9,1%	108.430	101.061	-7.369	-6,8%	-6,8%
February	243.685	308.158	64.473	26,5%	17,3%	116.640	109.884	-6.757	-5,8%	-6,3%
March	259.357	348.665	89.307	34,4%	23,1%	117.011	131.254	14.243	12,2%	0,0%
April	252.905	340.935	88.030	34,8%	26,0%	112.397	122.132	9.734	8,7%	2,2%
May	301.382	344.926	43.544	14,4%	23,3%	131.146	126.935	-4.212	-3,2%	1,0%
June	281.167	354.006	72.840	25,9%	23,8%	121.905	124.916	3.012	2,5%	1,2%
July	284.638	337.558	52.920	18,6%	23,0%	125.356	134.887	9.532	7,6%	2,2%
August	285.262	330.349	45.087	15,8%	22,1%	116.482	137.067	20.585	17,7%	4,1%
September	267.204					110.162				
October	272.864					120.252				
November	281.267					118.502				
December	279.693					108.620				
Total	3.280.239	2.660.122				1.406.901	988.134			

Goods (total tonnes)



Containers (total TEU)



CONTAINER TRAFFIC

TEU evolution

Full-unloaded foreign	Full TEU			%		Full-loaded foreign	Full TEU			%	
	2023	2024	Diff. 24-23	Monthly	Accumulated		2023	2024	Diff. 24-23	Monthly	Accumulated
January	49.138	41.691	-7.447	-15,2%	-15,2%	January	51.046	49.933	-1.113	-2,2%	-2,2%
February	51.449	44.498	-6.951	-13,5%	-14,3%	February	56.052	55.500	-552	-1,0%	-1,6%
March	44.515	58.372	13.858	31,1%	-0,4%	March	60.781	61.858	1.077	1,8%	-0,3%
April	51.432	57.413	5.982	11,6%	2,8%	April	51.392	55.225	3.833	7,5%	1,5%
May	64.095	56.609	-7.486	-11,7%	-0,8%	May	56.516	60.495	3.979	7,0%	2,6%
June	53.940	59.148	5.208	9,7%	1,0%	June	57.195	55.728	-1.467	-2,6%	1,7%
July	59.685	63.596	3.911	6,6%	1,9%	July	54.831	61.478	6.648	12,1%	3,2%
August	56.638	66.939	10.301	18,2%	4,0%	August	50.134	60.357	10.224	20,4%	5,2%
September	48.415					September	50.745				
October	52.489					October	57.938				
November	48.781					November	59.645				
December	43.001					December	55.662				
Total	623.574	448.265				Total	661.934	460.573			

Full-unloaded domestic	Full TEU			%		Full-loaded domestic	Full TEU			%	
	2023	2024	Diff. 24-23	Monthly	Accumulated		2023	2024	Diff. 24-23	Monthly	Accumulated
January	1.702	2.174	473	27,8%	27,8%	January	6.545	7.264	719	11,0%	11,0%
February	1.836	2.269	434	23,6%	25,6%	February	7.304	7.617	313	4,3%	7,4%
March	2.227	2.280	53	2,4%	16,6%	March	9.488	8.744	-744	-7,8%	1,2%
April	1.818	2.011	194	10,6%	15,2%	April	7.756	7.483	-274	-3,5%	0,0%
May	2.223	2.226	3	0,1%	11,8%	May	8.313	7.606	-708	-8,5%	-1,8%
June	1.938	1.919	-19	-1,0%	9,7%	June	8.833	8.122	-712	-8,1%	-2,9%
July	1.881	1.988	107	5,7%	9,1%	July	8.960	7.826	-1.134	-12,7%	-4,4%
August	1.989	1.935	-54	-2,7%	7,6%	August	7.722	7.836	115	1,5%	-3,7%
September	2.163					September	8.839				
October	2.164					October	7.662				
November	1.913					November	8.164				
December	1.886					December	8.072				
Total	23.737	16.801				Total	97.656	62.496			

Full - Transit	Full TEU			%		Empty	Empty TEU			%	
	2023	2024	Diff. 24-23	Monthly	Accumulated		2023	2024	Diff. 24-23	Monthly	Accumulated
January	97.136	112.121	14.985	15,4%	15,4%	January	65.251	82.346	17.096	26,2%	26,2%
February	71.919	117.897	45.978	63,9%	36,1%	February	55.126	80.377	25.251	45,8%	35,2%
March	83.590	133.694	50.104	59,9%	44,0%	March	58.757	83.718	24.961	42,5%	37,6%
April	83.957	134.387	50.431	60,1%	48,0%	April	56.551	84.416	27.865	49,3%	40,4%
May	97.501	116.347	18.846	19,3%	41,5%	May	72.735	101.644	28.909	39,7%	40,2%
June	84.535	139.159	54.624	64,6%	45,3%	June	74.728	89.932	15.204	20,3%	36,4%
July	93.112	121.659	28.547	30,7%	43,1%	July	66.171	81.012	14.841	22,4%	34,3%
August	83.799	107.624	23.825	28,4%	41,3%	August	84.981	85.658	677	0,8%	29,0%
September	86.284					September	70.759				
October	90.691					October	61.921				
November	86.555					November	76.210				
December	90.642					December	80.432				
Total	1.049.718	982.886				Total	823.621	689.103			

CONTAINER TRAFFIC

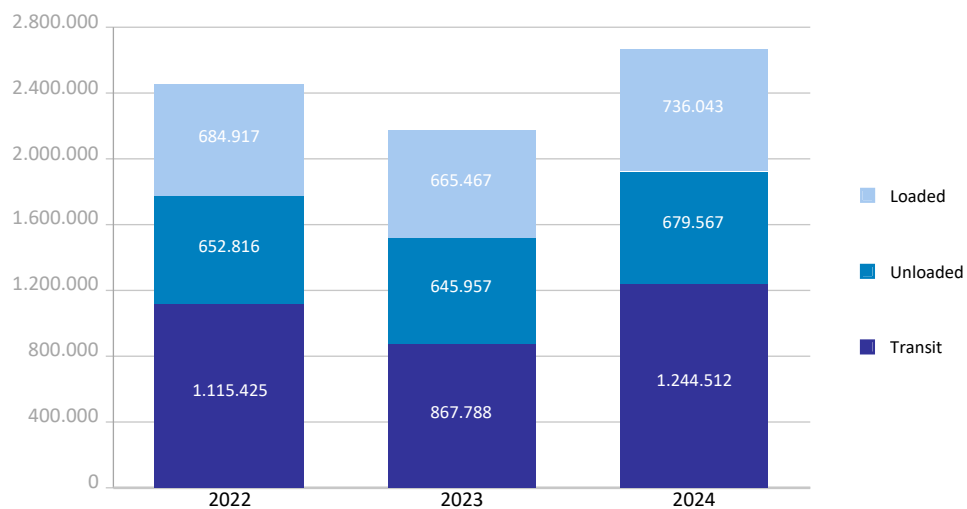
TEU

Container traffic	Monthly accumulated 2023			Monthly accumulated 2024			%
	Domestic	Foreign	Total	Domestic	Foreign	Total	
Total traffic	151.358	2.027.854	2.179.211	148.755	2.511.367	2.660.122	22,1%
Unloaded	79.306	1.018.758	1.098.064	79.451	1.256.857	1.336.308	21,7%
Roll On-Roll Off	19.063	9.934	28.997	15.922	6.095	22.017	-24,1%
Lift On-Lift Off	60.243	1.008.824	1.069.067	63.529	1.250.762	1.314.291	22,9%
Loaded	72.052	1.009.096	1.081.148	69.304	1.254.511	1.323.815	22,4%
Roll On-Roll Off	20.978	9.478	30.456	16.487	6.062	22.549	-26,0%
Lift On-Lift Off	51.074	999.618	1.050.692	52.817	1.248.449	1.301.266	23,8%

Breakdown by navigation and operation	Monthly accumulated 2023			Monthly accumulated 2024			%
	Domestic	Foreign	Total	Domestic	Foreign	Total	
Loaded	71.929	593.538	665.467	69.225	666.819	736.043	10,6%
Full	64.921	437.945	502.865	62.496	460.573	523.069	4,0%
Empty	7.009	155.593	162.602	6.729	206.246	212.974	31,0%
Unloaded	76.545	569.412	645.957	76.986	602.581	679.567	5,2%
Full	15.612	430.889	446.501	16.801	448.265	465.065	4,2%
Empty	60.933	138.523	199.456	60.186	154.317	214.502	7,5%
Transit	2.884	864.904	867.788	2.545	1.241.968	1.244.512	43,4%
Full	38	695.509	695.547	11	982.875	982.886	41,3%
Empty	2.846	169.395	172.241	2.534	259.093	261.627	51,9%

Total traffic	151.358	2.027.854	2.179.211	148.755	2.511.367	2.660.122	22,1%
Full	80.570	1.564.343	1.644.913	79.307	1.891.713	1.971.020	19,8%
Empty	70.788	463.511	534.299	69.448	619.655	689.103	29,0%
% Empty	46,8%	22,9%	24,5%	46,7%	24,7%	25,9%	
% Transit	1,9%	42,7%	39,8%	1,7%	49,5%	46,8%	

General cargo distribution by operation (TEU)

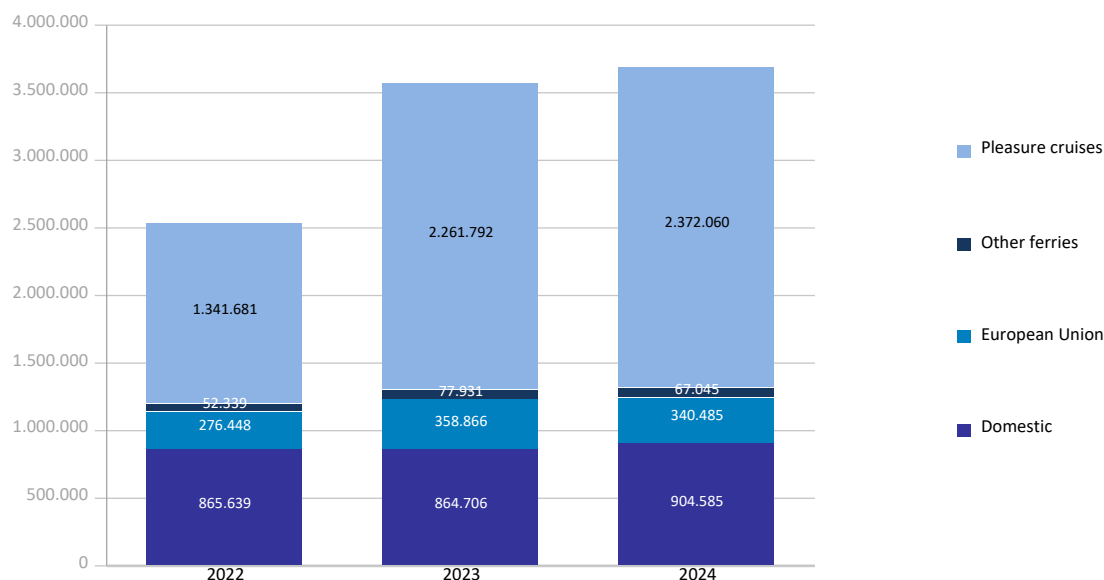


PASSENGER TRAFFIC

Total passenger traffic (units)	Monthly accumulated				% 24-23 accum. July	% 24-23 accum. June
	2023	2024	Diff. 24-23	%		
Total passengers	3.563.295	3.684.175	120.880	3,4%	2,8%	5,2%
Embarkation	1.302.186	1.360.374	58.188	4,5%	3,8%	7,3%
Disembarkation	1.216.852	1.283.944	67.092	5,5%	5,3%	9,1%
Transit	1.044.257	1.039.857	-4.400	-0,4%	-1,1%	-0,7%
Regular line ferries	1.301.503	1.312.115	10.612	0,8%	0,6%	3,1%
Embarkation	685.699	689.877	4.178	0,6%	0,0%	2,8%
Disembarkation	615.804	622.238	6.434	1,0%	1,3%	3,5%
Domestic	864.706	904.585	39.879	4,6%	4,4%	8,2%
Embarkation	462.012	484.395	22.383	4,8%	3,8%	7,3%
Disembarkation	402.694	420.190	17.496	4,3%	5,2%	9,3%
European Union	358.866	340.485	-18.381	-5,1%	-6,3%	-5,7%
Embarkation	180.701	170.096	-10.605	-5,9%	-7,5%	-5,8%
Disembarkation	178.165	170.389	-7.776	-4,4%	-5,0%	-5,6%
Other ferries	77.931	67.045	-10.886	-14,0%	-10,4%	-10,7%
Embarkation	42.986	35.386	-7.600	-17,7%	-9,5%	-12,3%
Disembarkation	34.945	31.659	-3.286	-9,4%	-11,9%	-8,7%
Pleasure cruises	2.261.792	2.372.060	110.268	4,9%	3,8%	6,2%
Embarkation	616.487	670.497	54.010	8,8%	7,5%	11,7%
Disembarkation	601.048	661.706	60.658	10,1%	8,7%	13,9%
Transit	1.044.257	1.039.857	-4.400	-0,4%	-1,1%	-0,7%

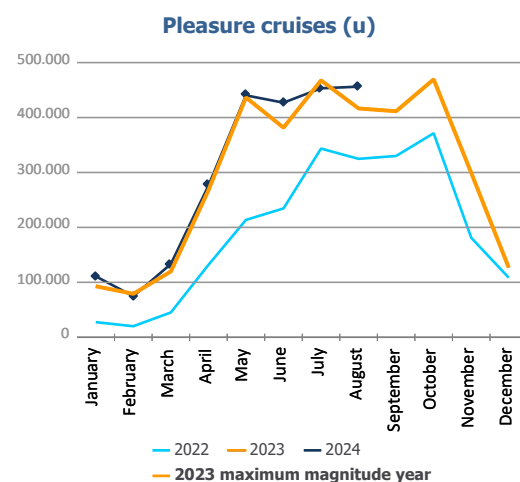
Total passenger calls (units)	Monthly accumulated				% 24-23 accum. July	% 24-23 accum. June
	2023	2024	Diff. 24-23	%		
Total number of calls	2.724	2.550	-174	-6,4%	-6,2%	-5,2%
Regular Line ferries	2.225	2.072	-153	-6,9%	-6,2%	-4,9%
Pleasure cruises	499	478	-21	-4,2%	-6,1%	-6,6%

Passenger traffic distribution (u)

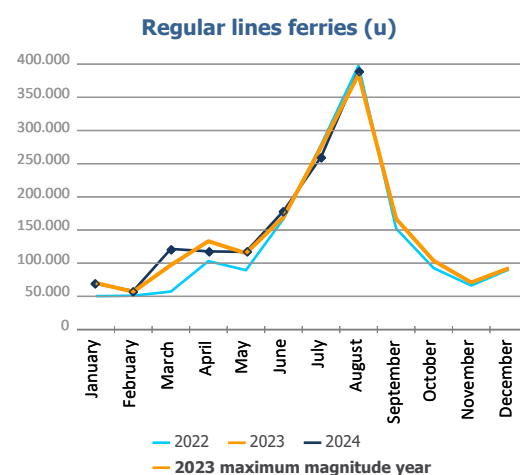


PASSENGER CLASSIFICATION

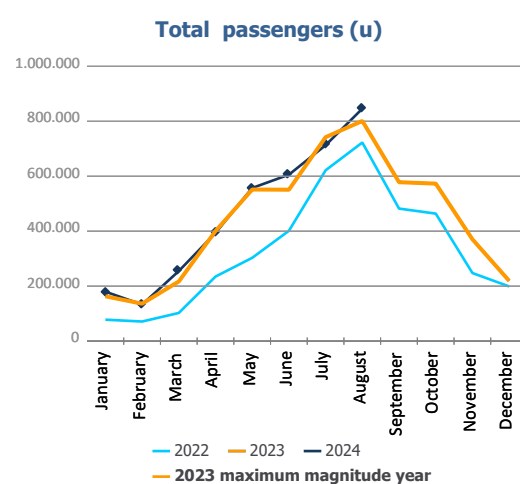
Monthly evolution of passenger traffic	Pleasure cruises			%	
	2023	2024	Diff. 24-23	Monthly	Accumulated
January	93.013	111.036	18.023	19,4%	19,4%
February	79.194	74.939	-4.255	-5,4%	8,0%
March	119.885	133.501	13.616	11,4%	9,4%
April	267.420	275.893	8.473	3,2%	6,4%
May	436.569	440.310	3.741	0,9%	4,0%
June	381.587	427.017	45.430	11,9%	6,2%
July	467.607	453.184	-14.423	-3,1%	3,8%
August	416.517	456.180	39.663	9,5%	4,9%
September	411.457				
October	469.510				
November	299.424				
December	126.942				
Total	3.569.125	2.372.060			



Monthly evolution of passenger traffic	Regular lines ferries			%	
	2023	2024	Diff. 24-23	Monthly	Accumulated
January	70.262	68.931	-1.331	-1,9%	-1,9%
February	57.059	58.232	1.173	2,1%	-0,1%
March	97.166	121.528	24.362	25,1%	10,8%
April	133.201	117.845	-15.356	-11,5%	2,5%
May	115.112	117.084	1.972	1,7%	2,3%
June	169.419	178.722	9.303	5,5%	3,1%
July	274.632	259.895	-14.737	-5,4%	0,6%
August	384.652	389.878	5.226	1,4%	0,8%
September	166.887				
October	103.714				
November	71.033				
December	92.358				
Total	1.735.495	1.312.115			



Monthly evolution of passenger traffic	Total passengers			%	
	2023	2024	Diff. 24-23	Monthly	Accumulated
January	163.275	179.967	16.692	10,2%	10,2%
February	136.253	133.171	-3.082	-2,3%	4,5%
March	217.051	255.029	37.978	17,5%	10,0%
April	400.621	393.738	-6.883	-1,7%	4,9%
May	551.681	557.394	5.713	1,0%	3,4%
June	551.006	605.739	54.733	9,9%	5,2%
July	742.239	713.079	-29.160	-3,9%	2,8%
August	801.169	846.058	44.889	5,6%	3,4%
September	578.344				
October	573.224				
November	370.457				
December	219.300				
Total	5.304.620	3.684.175			

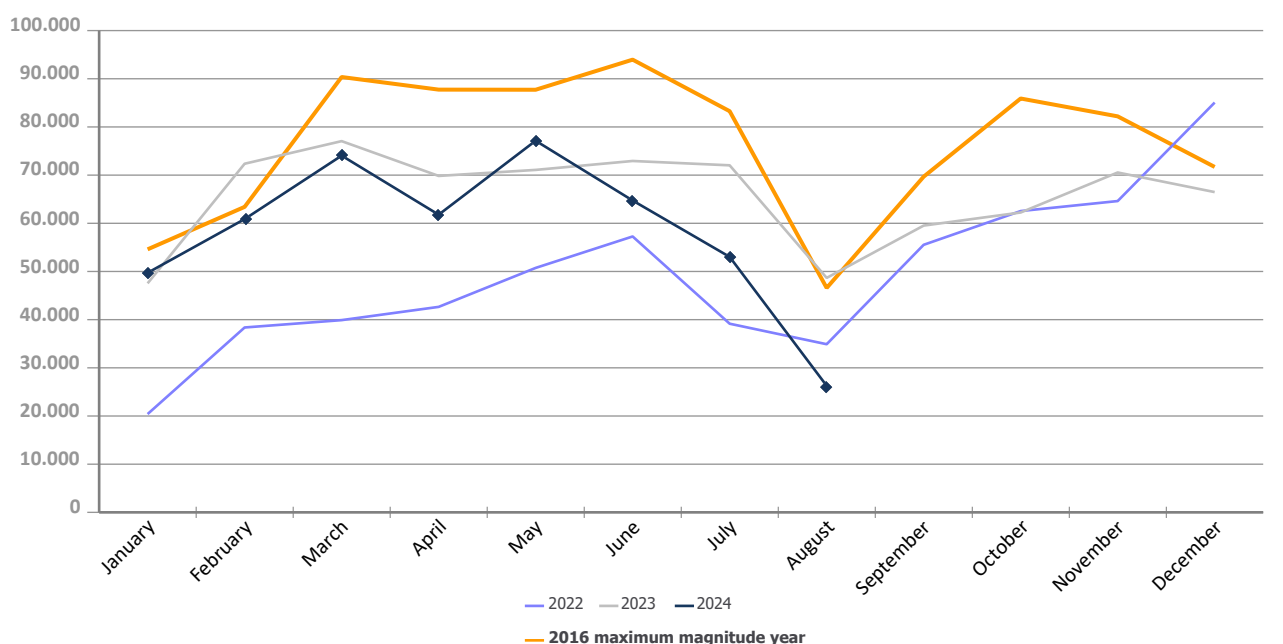


AUTOMOBILE TRAFFIC

Total automobile traffic (units)	Monthly accumulated				% 24-23 accum. July	% 24-23 accum. June
	2023	2024	Diff. 24-23	%		
Automobile traffic by navigation and operation	531.515	467.590	-63.925	-12,0%	-8,6%	-5,5%
Domestic	74.480	72.450	-2.030	-2,7%	2,1%	2,3%
Loaded	67.289	65.808	-1.481	-2,2%	3,0%	3,7%
Unloaded	7.085	6.569	-516	-7,3%	-7,4%	-11,9%
Transit	106	73	-33	-31,1%	247,6%	247,6%
Foreign	457.035	395.140	-61.895	-13,5%	-10,4%	-6,8%
Loaded	216.314	229.506	13.192	6,1%	11,1%	13,9%
Unloaded	159.546	93.791	-65.755	-41,2%	-41,0%	-35,4%
Transit	81.175	71.843	-9.332	-11,5%	-5,7%	-3,8%

Monthly automobile traffic (u)	Monthly		Accumulated		%	
	2023	2024	2023	2024	Monthly	Accumulated
January	47.534	49.721	47.534	49.721	4,6%	4,6%
February	72.364	60.872	119.898	110.593	-15,9%	-7,8%
March	77.057	74.044	196.955	184.637	-3,9%	-6,3%
April	69.834	61.791	266.789	246.428	-11,5%	-7,6%
May	71.083	77.134	337.872	323.562	8,5%	-4,2%
June	72.935	64.728	410.807	388.290	-11,3%	-5,5%
July	72.037	53.033	482.844	441.323	-26,4%	-8,6%
August	48.671	26.267	531.515	467.590	-46,0%	-12,0%
September	59.527		591.042			
October	62.244		653.286			
November	70.552		723.838			
December	66.480		790.318			

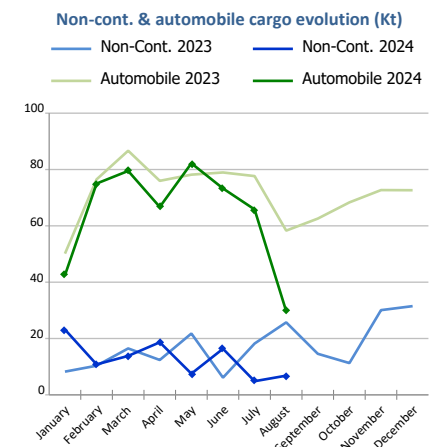
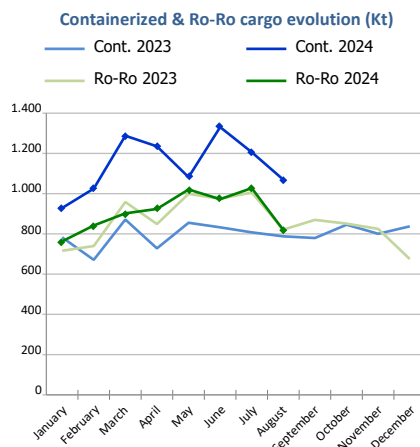
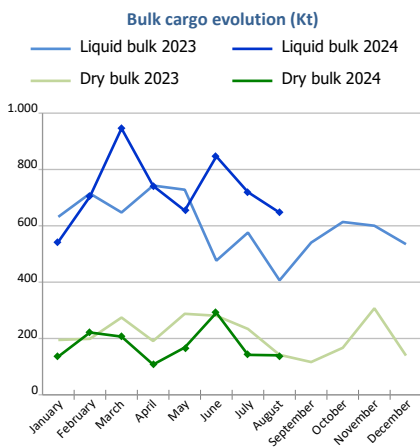
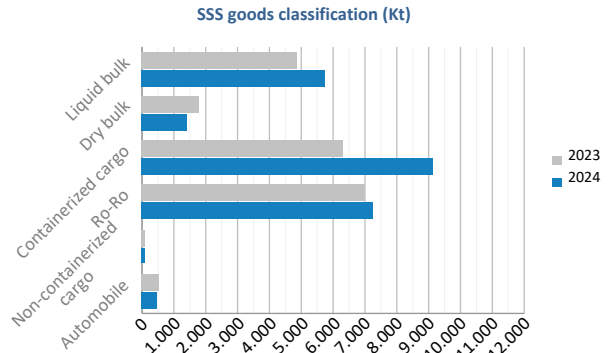
Evolution of monthly automobile traffic (u)



SHORT SEA SHIPPING (SSS)

SSS Goods classification

Goods classification. Tonnes	Monthly accumulated		%	% of total port traffic
	2023	2024		
Liquid bulk	4.923.880	5.801.610	17,8%	61,7%
Dry bulk	1.803.027	1.412.366	-21,7%	47,1%
Containerized cargo	6.336.139	9.164.515	44,6%	35,4%
Ro-Ro	7.064.007	7.269.907	2,9%	99,7%
Non-containerized cargo	119.247	101.967	-14,5%	37,1%
Automobile	582.363	514.700	-11,6%	75,5%
Total	20.828.662	24.265.066	16,5%	52,2%



SSS General Cargo	Spanish Islands			SSS Remainder			TOTAL		
	2023	2024	%	2023	2024	%	2023	2024	%
Containerized cargo	590.567	633.557	7,3%	5.745.573	8.530.958	48,5%	6.336.139	9.164.515	44,6%
O/D	576.563	608.272	5,5%	2.108.540	2.625.383	24,5%	2.685.104	3.233.655	20,4%
Transit	14.003	25.285	80,6%	3.637.032	5.905.575	62,4%	3.651.036	5.930.860	62,4%
Ro-Ro	4.089.990	4.159.875	1,7%	2.974.017	3.110.032	4,6%	7.064.007	7.269.907	2,9%
O/D	4.089.990	4.159.821	1,7%	2.815.747	2.850.469	1,2%	6.905.737	7.010.290	1,5%
Transit	0	54		158.269	259.563	64,0%	158.269	259.617	64,0%
Non-cont. cargo	1.231	931	-24,3%	118.016	101.036	-14,4%	119.247	101.967	-14,5%
O/D	1.231	931	-24,3%	114.879	99.711	-13,2%	116.110	100.642	-13,3%
Transit	0	0		3.137	1.326	-57,7%	3.137	1.326	-57,7%
Automobile	113.343	108.069	-4,7%	469.020	406.632	-13,3%	582.363	514.700	-11,6%
O/D	112.958	108.017	-4,4%	384.821	334.779	-13,0%	497.779	442.796	-11,0%
Transit	385	52	-86,5%	84.198	71.853	-14,7%	84.584	71.904	-15,0%



Short Sea Shipping (SSS):

The transport of cargo/goods and passengers between ports situated in the European Union or between these ports and non-European ports with a coastline in seas bordering Europe. This applies to cargo either originating from or is destined for these countries (in accordance with the European Shortsea Network).

Motorways of the sea (MoS):

Short Sea Shipping services as an alternative to road transport and which fulfill the following criteria: minimum frequency of 3 calls per week and calling at a maximum of 3 different ports.

General cargo:

Including containerized cargo, non-containerized cargo, Ro-Ro and automobiles.

Containerized cargo:

Excluding container cargo by Ro-Ro.

Non-containerized cargo:

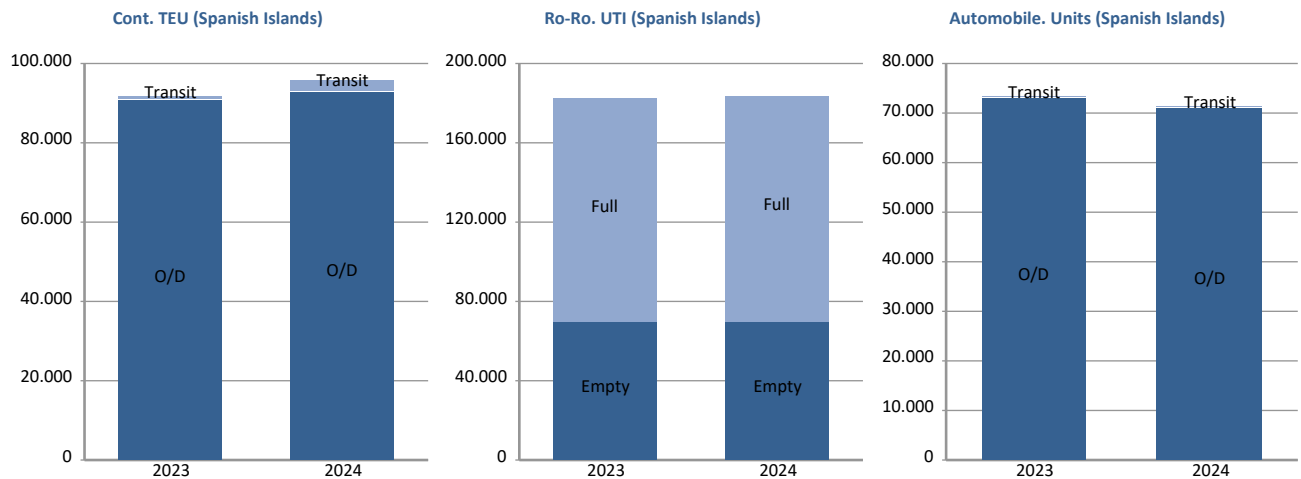
General non-containerized goods other than Ro-Ro and excluding automobiles.

Ro-Ro:

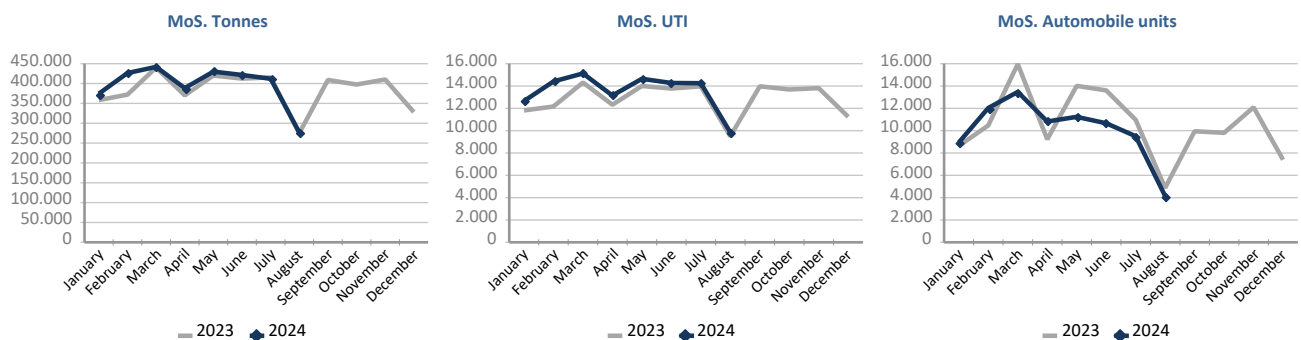
General cargo carried in UTI's. Excluding automobiles.

SHORT SEA SHIPPING (SSS)

SSS General cargo	Spanish Islands			SSS Remainder			TOTAL		
	2023	2024	%	2023	2024	%	2023	2024	%
Containerized cargo. TEU	91.950	95.994	4,4%	547.500	819.985	49,8%	639.450	915.979	43,2%
O/D	90.602	92.680	2,3%	255.940	316.071	23,5%	346.542	408.751	18,0%
Full	55.668	59.269	6,5%	150.692	182.438	21,1%	206.359	241.707	17,1%
Empty	34.935	33.411	-4,4%	105.248	133.634	27,0%	140.182	167.045	19,2%
Transit	1.348	3.314	145,8%	291.560	503.914	72,8%	292.908	507.228	73,2%
Full	1.124	2.284	103,2%	263.364	452.473	71,8%	264.488	454.757	71,9%
Empty	224	1.030	359,8%	28.196	51.441	82,4%	28.420	52.471	84,6%
Ro-Ro. UTI	182.408	183.314	0,5%	103.135	110.034	6,7%	285.543	293.348	2,7%
Full	112.963	114.038	1,0%	93.434	98.181	5,1%	206.397	212.219	2,8%
Empty	69.445	69.276	-0,2%	9.701	11.853	22,2%	79.146	81.129	2,5%
Automobile units	73.403	71.022	-3,2%	322.330	294.794	-8,5%	395.733	365.816	-7,6%
O/D	73.120	70.984	-2,9%	267.243	244.304	-8,6%	340.363	315.288	-7,4%
Transit	283	38	-86,6%	55.087	50.490	-8,3%	55.370	50.528	-8,7%



Motorways of the Sea (MoS)	2023	EU		Non-EU			TOTAL		
		2024	%	2023	2024	%	2023	2024	%
Tonnes	3.048.885	3.165.531	3,8%	14.876	6.059	-59,3%	3.063.762	3.171.590	3,5%
Loaded	1.625.209	1.707.616	5,1%	9.791	4.845	-50,5%	1.635.000	1.712.461	4,7%
Unloaded	1.423.676	1.457.915	2,4%	5.085	1.214	-76,1%	1.428.762	1.459.130	2,1%
UTI	101.125	108.087	6,9%	734	273	-62,8%	101.859	108.360	6,4%
Loaded	51.410	55.496	7,9%	498	212	-57,4%	51.908	55.708	7,3%
Unloaded	49.715	52.591	5,8%	236	61	-74,2%	49.951	52.652	5,4%
Automobile units	86.550	79.549	-8,1%	1.226	1.281	4,5%	87.776	80.830	-7,9%
Loaded	80.586	75.647	-6,1%	1.221	1.275	4,4%	81.807	76.922	-6,0%
Unloaded	5.964	3.902	-34,6%	5	6	20,0%	5.969	3.908	-34,5%



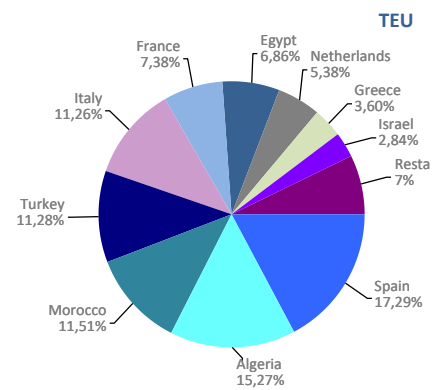
UTI: All those means of unitization, self-propelled or otherwise, that are directly or indirectly used as a means of land transport (e.g. trailers, platforms, trucks, freezer trucks, etc.) are considered as UTI. Containers are not considered to be included, except those that are handled by an equipment transport of the own terminal.

SHORT SEA SHIPPING (SSS)

SSS Ranking countries by mode of packaging

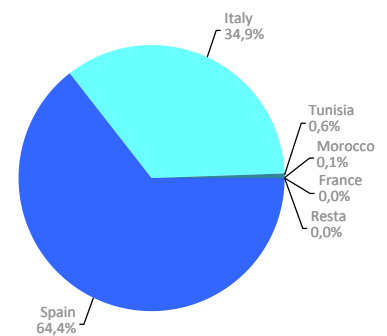
Containerized cargo. TEU	Monthly accumulated				% of total 2024
	2023	2024	Diff. 24-23	%	
Total	639.450	915.979	276.529	43,2%	100%
Spain	134.167	158.395	24.228	18,1%	17,3%
Algeria	125.622	139.904	14.282	11,4%	15,3%
Morocco	76.577	105.463	28.886	37,7%	11,5%
Turkey	85.217	103.298	18.081	21,2%	11,3%
Italy	44.920	103.118	58.199	129,6%	11,3%
France	44.022	67.597	23.575	53,6%	7,4%
Egypt	41.841	62.835	20.994	50,2%	6,9%
Netherlands	890	49.245	48.356	5436,3%	5,4%
Greece	21.342	32.968	11.626	54,5%	3,6%
Israel	15.811	26.054	10.243	64,8%	2,8%
Remainder	49.043	67.104	18.061	36,8%	7,3%

Main countries



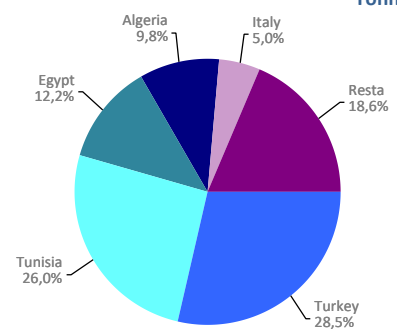
Ro-Ro. UTI	Monthly accumulated				% of total 2024
	2023	2024	Diff. 24-23	%	
Total	285.543	293.348	7.806	2,7%	100%
Spain	186.045	188.919	2.874	1,5%	64,4%
Italy	97.468	102.477	5.009	5,1%	34,9%
Tunisia	1.283	1.651	369	28,7%	0,6%
Morocco	734	287	-447	-60,9%	0,1%
France	0	11	11	0,0%	0,0%
Remainder	13	3	-10	-76,9%	0,0%

UTI



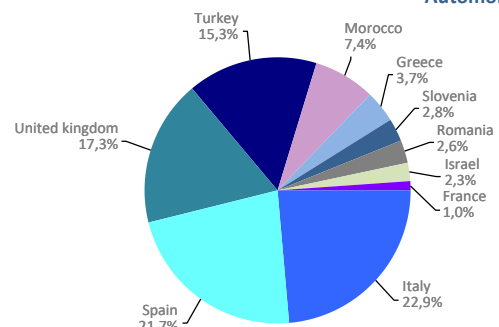
Non-cont. cargo. Tonnes	Monthly accumulated				% of total 2024
	2023	2024	Diff. 24-23	%	
Total	119.247	101.967	-17.279	-14,5%	100%
Turkey	3.975	29.066	25.091	631,2%	28,5%
Tunisia	3.926	26.461	22.535	574,0%	26,0%
Egypt	45.008	12.424	-32.584	-72,4%	12,2%
Algeria	14.389	10.004	-4.385	-30,5%	9,8%
Italy	41.911	5.088	-36.823	-87,9%	5,0%
Remainder	10.037	18.925	8.888	88,6%	18,6%

Tonnes



Automobile. Units	Monthly accumulated				% of total 2024
	2023	2024	Diff. 24-23	%	
Total	395.733	365.816	-29.917	-7,6%	100%
Italy	91.952	83.942	-8.010	-8,7%	22,9%
Spain	82.830	79.464	-3.366	-4,1%	21,7%
United kingdom	61.261	63.294	2.033	3,3%	17,3%
Turkey	41.387	56.149	14.762	35,7%	15,3%
Morocco	26.901	27.241	340	1,3%	7,4%
Greece	14.330	13.467	-863	-6,0%	3,7%
Slovenia	4.224	10.103	5.879	139,2%	2,8%
Romania	12.513	9.592	-2.921	-23,3%	2,6%
Israel	11.213	8.452	-2.761	-24,6%	2,3%
France	22.035	3.688	-18.347	-83,3%	1,0%
Remainder	27.087	10.424	-16.663	-61,5%	2,8%

Automobile



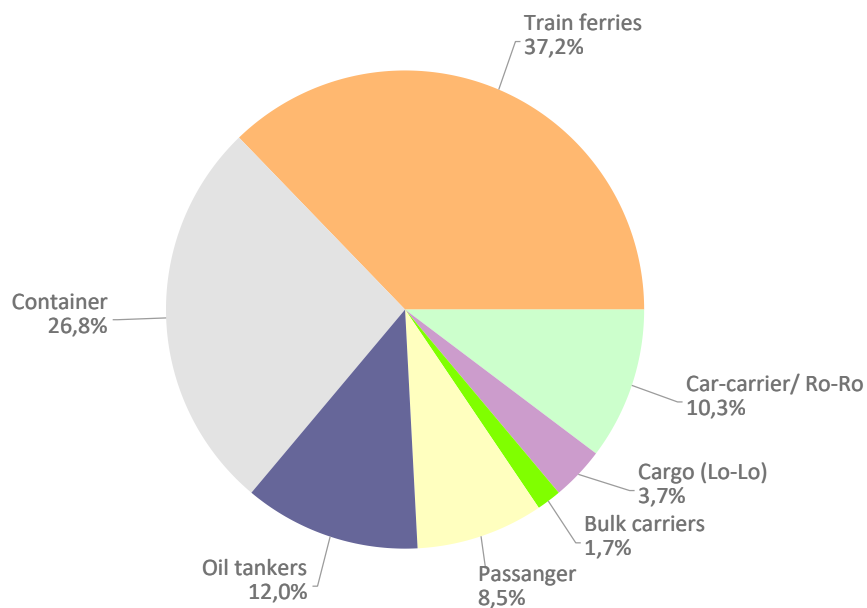
VESSELS TRAFFIC

Vessels traffic	Monthly accumulated		
	2023	2024	%
Number of calls	5.859	5.656	-3,5%
Tonnage	246.482.930	242.151.840	-1,8%
Average tonnes	42.069	42.813	1,8%

Type of vessels	Monthly accumulated					
	2023		2024		%	
	Calls	GT	Calls	GT	Calls	GT
Total	5.859	246.482.930	5.656	242.151.840	-3,5%	-1,8%
Car-carrier/ Ro-Ro	602	31.931.144	581	30.246.710	-3,5%	-5,3%
Cargo (Lo-Lo)	243	1.468.660	207	1.855.267	-14,8%	26,3%
Bulk carriers	108	3.058.248	96	2.765.382	-11,1%	-9,6%
Passanger	499	62.497.457	478	60.730.959	-4,2%	-2,8%
Oil tankers	659	12.631.220	678	11.717.842	2,9%	-7,2%
Container	1.481	67.214.465	1.513	72.745.934	2,2%	8,2%
Train ferries	2.267	67.681.736	2.103	62.089.746	-7,2%	-8,3%

Type of vessels (monthly accumulated 2024)	Domestic		Foreign	
	Calls	GT	Calls	GT
Total	2.097	50.933.967	3.559	191.217.873
Car-carrier/ Ro-Ro	40	860.640	541	29.386.070
Cargo (Lo-Lo)	22	116.633	185	1.738.634
Bulk carriers	7	81.590	89	2.683.792
Passanger	66	5.243.934	412	55.487.025
Oil tankers	76	846.279	602	10.871.563
Container	227	2.792.191	1.286	69.953.743
Train ferries	1.659	40.992.700	444	21.097.046

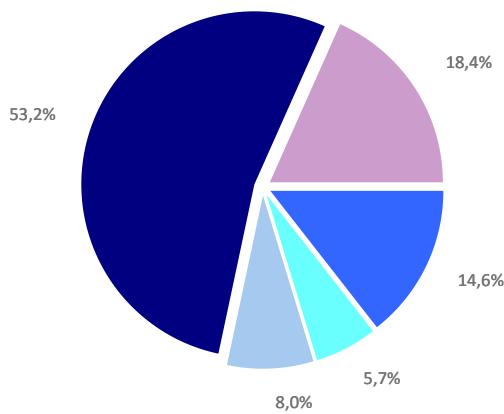
Distribution by type of vessel



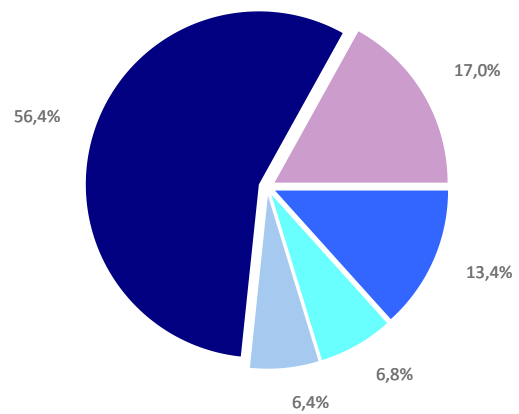
GOODS TRAFFIC

Type of packaging and navigation	Monthly accumulated 2023			Monthly accumulated 2024			%
	Domestic	Foreign	Total	Domestic	Foreign	Total	
Hydrocarbons	516.329	5.563.120	6.079.449	445.552	5.775.512	6.221.065	2,3%
Incoming	406.598	4.588.867	4.995.465	214.833	4.604.489	4.819.321	-3,5%
Outgoing	109.731	974.253	1.083.984	230.720	1.171.024	1.401.743	29,3%
Other liquid bulk	107.174	2.280.836	2.388.010	338.891	2.839.546	3.178.437	33,1%
Incoming	63.656	1.511.086	1.574.742	264.741	1.903.649	2.168.390	37,7%
Outgoing	43.518	769.750	813.268	74.150	935.896	1.010.046	24,2%
Dry bulk	88.259	3.271.944	3.360.204	55.551	2.943.764	2.999.315	-10,7%
Incoming	80.163	1.778.881	1.859.044	55.551	1.686.631	1.742.182	-6,3%
Outgoing	8.097	1.493.063	1.501.160	0	1.257.133	1.257.133	-16,3%
Containerized cargo	943.148	21.281.561	22.224.709	915.621	25.310.412	26.226.033	18,0%
Incoming	278.894	10.258.478	10.537.371	281.724	12.255.816	12.537.540	19,0%
Outgoing	664.254	11.023.083	11.687.337	633.897	13.054.596	13.688.493	17,1%
Non-containerized cargo	3.912.668	3.784.523	7.697.191	4.032.841	3.861.038	7.893.879	2,6%
Incoming	1.267.431	1.929.855	3.197.286	1.317.166	1.902.104	3.219.271	0,7%
Outgoing	2.645.238	1.854.667	4.499.905	2.715.674	1.958.934	4.674.608	3,9%
Total general cargo	4.855.816	25.066.084	29.921.900	4.948.462	29.171.451	34.119.912	14,0%
Incoming	1.546.324	12.188.333	13.734.658	1.598.890	14.157.921	15.756.811	14,7%
Outgoing	3.309.491	12.877.750	16.187.242	3.349.571	15.013.530	18.363.101	13,4%
Total throughput (tonnes)	5.567.579	36.181.984	41.749.562	5.788.456	40.730.272	46.518.728	11,4%
Incoming	2.096.741	20.067.167	22.163.908	2.134.015	22.352.689	24.486.705	10,5%
Outgoing	3.470.837	16.114.817	19.585.654	3.654.441	18.377.583	22.032.023	12,5%
Container traffic (TEU)	151.358	2.027.854	2.179.211	148.755	2.511.367	2.660.122	22,1%
Incoming	79.306	1.018.758	1.098.064	79.451	1.256.857	1.336.308	21,7%
Outgoing	72.052	1.009.096	1.081.148	69.304	1.254.511	1.323.815	22,4%

Distribution by type of packaging 2023

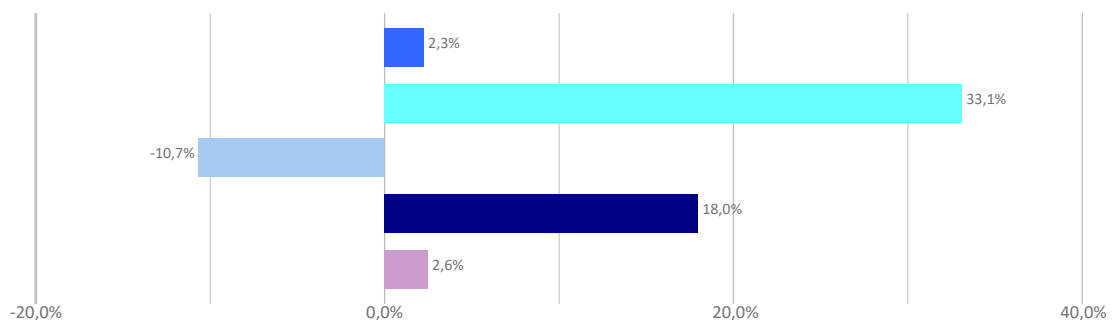


Distribution by type of packaging 2024



Hydrocarbons Liquid bulk Dry bulk Containerized cargo Non Containerized cargo

Annual growth by type of packaging



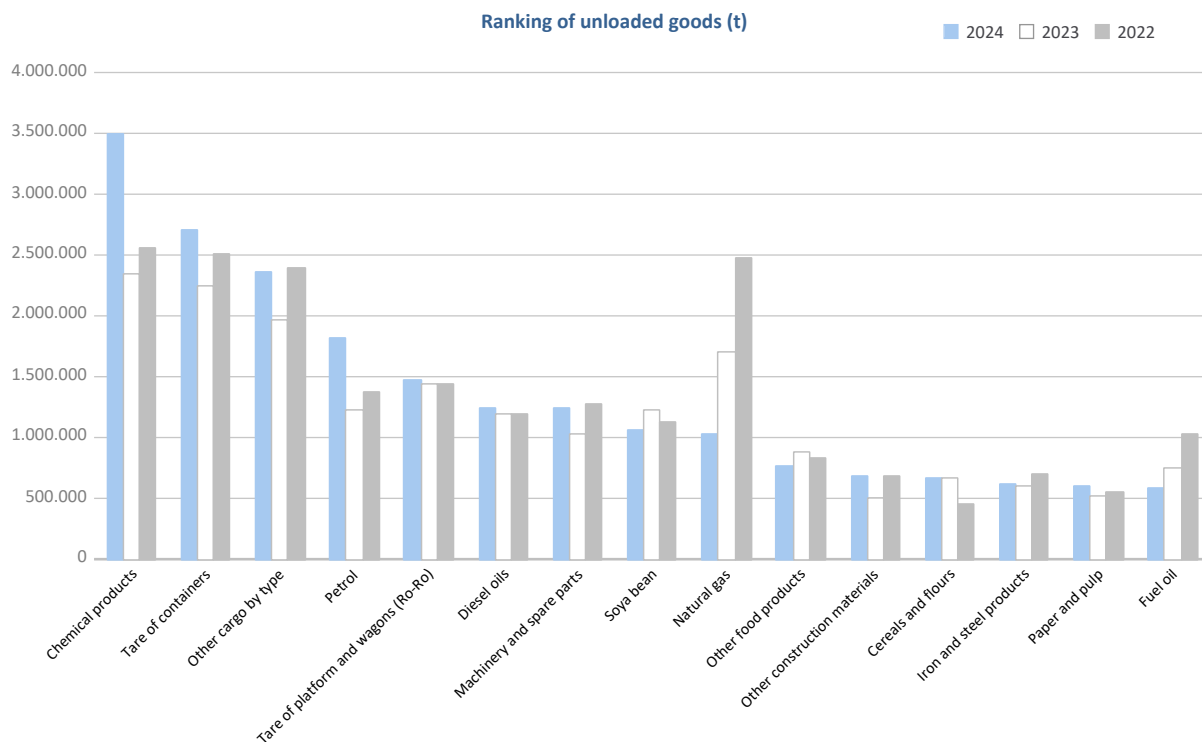
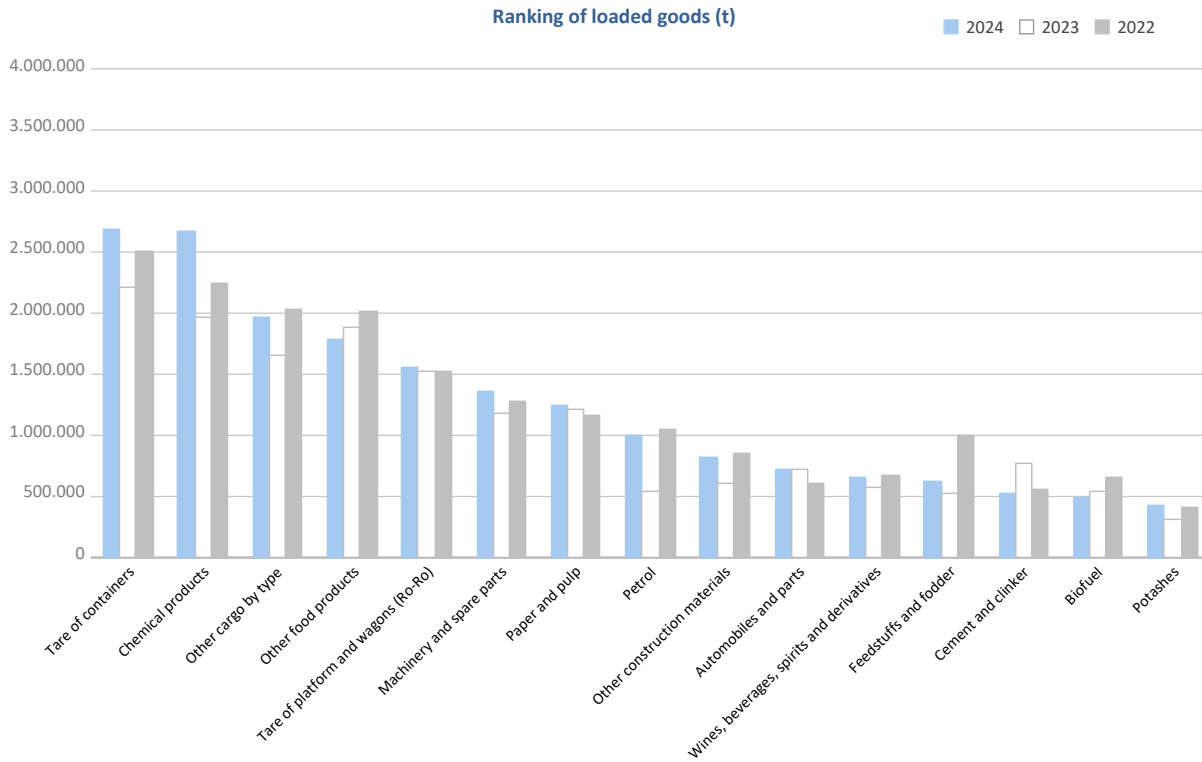
GOODS TRAFFIC

Goods by classification 4.3.7.	Monthly accumulated				% of total accum. 2024
	2023	2024	Diff. 24-23	%	
Tonnes	41.749.562	46.518.728	4.769.166	11,4%	100%
Energy	7.276.856	7.258.068	-18.789	-0,3%	15,6%
Crude oil	33	590	556	1667,3%	0,0%
Fuel oil	867.860	669.138	-198.721	-22,9%	1,4%
Diesel oils	1.426.988	1.467.786	40.799	2,9%	3,2%
Petrol	1.764.360	2.817.897	1.053.538	59,7%	6,1%
Other petroleum products	152.376	218.731	66.356	43,5%	0,5%
Petroleum fuel gasses	39.179	45.045	5.866	15,0%	0,1%
Coal	46.574	42.830	-3.743	-8,0%	0,1%
Natural gas	1.926.460	1.114.746	-811.714	-42,1%	2,4%
Biofuel	1.053.027	881.303	-171.725	-16,3%	1,9%
Iron, steel and metallurgical products	1.835.529	1.969.211	133.682	7,3%	4,2%
Iron ore	3.063	3.923	860	28,1%	0,0%
Other minerals and metallic waste	259.470	409.262	149.792	57,7%	0,9%
Scrap iron	335.981	292.967	-43.014	-12,8%	0,6%
Iron and steel products	887.969	935.321	47.352	5,3%	2,0%
Other metallurgical products	349.045	327.738	-21.307	-6,1%	0,7%
Non-metallic minerals	711.806	750.921	39.115	5,5%	1,6%
Common salt	439.962	384.050	-55.912	-12,7%	0,8%
Other non-metallic minerals	271.844	366.872	95.028	35,0%	0,8%
Fertilizers	470.277	630.814	160.537	34,1%	1,4%
Phosphates	83	95	12	14,0%	0,0%
Potashes	319.000	439.293	120.293	37,7%	0,9%
Natural/artificial fertilizer	151.194	191.426	40.232	26,6%	0,4%
Chemicals	4.306.986	6.161.619	1.854.633	43,1%	13,2%
Chemical products	4.306.986	6.161.619	1.854.633	43,1%	13,2%
Construction materials	1.910.970	2.071.505	160.535	8,4%	4,5%
Asphalt	5.207	7.978	2.771	53,2%	0,0%
Cement and clinker	807.929	558.342	-249.587	-30,9%	1,2%
Other construction materials	1.097.834	1.505.184	407.351	37,1%	3,2%
Agriculture, livestock and food	8.600.116	8.845.834	245.718	2,9%	19,0%
Cereals and flours	758.615	843.609	84.994	11,2%	1,8%
Soya bean	1.378.180	1.136.372	-241.808	-17,5%	2,4%
Fruits, vegetables, pulses	346.450	404.379	57.929	16,7%	0,9%
Wines, beverages, spirits and derivatives	661.344	833.274	171.930	26,0%	1,8%
Canned goods	232.603	219.770	-12.832	-5,5%	0,5%
Tobacco, coffee, cocoa	530.938	684.984	154.046	29,0%	1,5%
Oils and fats	834.585	932.826	98.241	11,8%	2,0%
Other food products	2.768.279	2.552.770	-215.509	-7,8%	5,5%
Frozen fish	464.375	451.396	-12.980	-2,8%	1,0%
Feedstuffs and fodder	624.747	786.454	161.706	25,9%	1,7%
Other cargo	7.843.088	9.130.709	1.287.621	16,4%	19,6%
Timber	279.439	358.849	79.410	28,4%	0,8%
Paper and pulp	1.731.178	1.850.490	119.312	6,9%	4,0%
Machinery and spare parts	2.204.334	2.591.738	387.403	17,6%	5,6%
Other cargo by type	3.628.136	4.329.633	701.496	19,3%	9,3%
Vehicles and transport parts	8.793.934	9.700.047	906.113	10,3%	20,9%
Automobiles and parts	1.362.473	1.268.114	-94.359	-6,9%	2,7%
Tare of platform and wagons (Ro-Ro)	2.975.209	3.036.201	60.992	2,1%	6,5%
Tare of containers	4.456.251	5.395.732	939.480	21,1%	11,6%

GOODS TRAFFIC

Goods by classification 4.3.7.

Ranking of goods (tonnes)

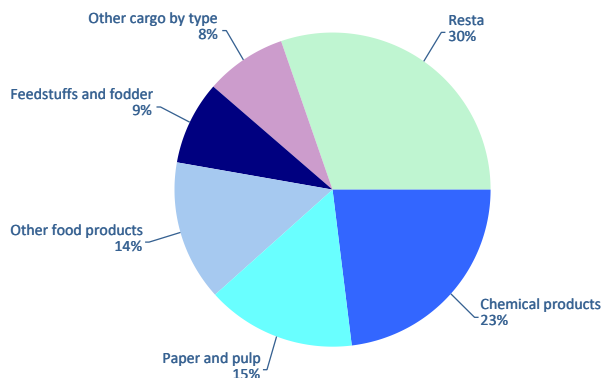


GOODS TRAFFIC

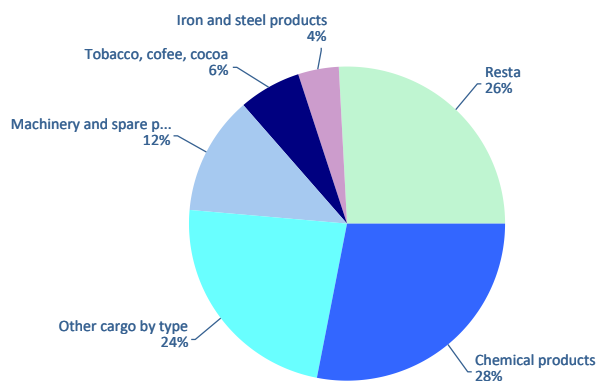
Containerized goods by classification 4.3.7. (Tares & transits not included)

Containerized goods classification	Loaded			Unloaded			Total monthly accumulated		
	2023	2024	%	2023	2024	%	2023	2024	%
Total tonnes (tares & transits not included)	5.215.574	5.487.257	5,2%	3.999.819	4.243.480	6,1%	9.215.394	9.730.737	5,6%
Chemical products	1.036.998	1.266.522	22,1%	1.037.290	1.186.225	14,4%	2.074.288	2.452.747	18,2%
Other cargo by type	432.731	452.569	4,6%	919.514	999.208	8,7%	1.352.245	1.451.776	7,4%
Paper and pulp	878.141	842.591	-4,0%	115.033	158.325	37,6%	993.173	1.000.916	0,8%
Other food products	800.899	786.787	-1,8%	71.051	42.450	-40,3%	871.949	829.237	-4,9%
Machinery and spare parts	318.565	305.460	-4,1%	529.422	512.012	-3,3%	847.987	817.472	-3,6%
Feedstuffs and fodder	399.869	470.002	17,5%	35.843	64.358	79,6%	435.712	534.360	22,6%
Other construction materials	181.842	196.033	7,8%	153.842	150.372	-2,3%	335.684	346.405	3,2%
Tobacco, coffee, cocoa	51.968	54.028	4,0%	239.588	269.519	12,5%	291.556	323.547	11,0%
Wines, beverages, spirits and derivatives	273.635	270.860	-1,0%	25.546	28.357	11,0%	299.181	299.217	0,0%
Iron and steel products	116.573	110.703	-5,0%	182.473	179.550	-1,6%	299.046	290.253	-2,9%
Automobiles and parts	91.721	85.306	-7,0%	144.083	156.433	8,6%	235.804	241.739	2,5%
Other minerals and metallic waste	120.292	145.158	20,7%	16.573	20.217	22,0%	136.865	165.375	20,8%
Other metallurgical products	58.859	52.703	-10,5%	112.368	100.413	-10,6%	171.227	153.116	-10,6%
Other non-metallic minerals	72.536	66.611	-8,2%	55.872	61.665	10,4%	128.408	128.276	-0,1%
Oils and fats	93.339	86.511	-7,3%	29.516	24.645	-16,5%	122.855	111.156	-9,5%
Canned goods	47.787	44.773	-6,3%	63.996	54.745	-14,5%	111.783	99.517	-11,0%
Fruits, vegetables, pulses	20.175	19.122	-5,2%	97.267	76.463	-21,4%	117.442	95.584	-18,6%
Biofuel	62.547	71.345	14,1%	18.394	20.026	8,9%	80.941	91.371	12,9%
Cereals and flours	38.504	32.921	-14,5%	22.957	23.627	2,9%	61.460	56.548	-8,0%
Natural/artificial fertilizer	28.783	32.285	12,2%	34.235	13.712	-59,9%	63.018	45.997	-27,0%
Scrap iron	18.047	18.581	3,0%	15.805	18.353	16,1%	33.852	36.935	9,1%
Frozen fish	4.946	1.313	-73,5%	27.615	32.436	17,5%	32.560	33.749	3,6%
Other petroleum products	12.461	16.084	29,1%	10.050	9.599	-4,5%	22.511	25.683	14,1%
Timber	8.079	8.970	11,0%	16.323	16.712	2,4%	24.401	25.682	5,2%
Common salt	19.536	20.775	6,3%	1.531	1.509	-1,5%	21.068	22.284	5,8%
Coal	1.603	1.455	-9,2%	18.196	12.365	-32,0%	19.799	13.820	-30,2%
Fuel oil	5.075	5.099	0,5%	2.732	4.592	68,1%	7.807	9.691	24,1%
Petroleum fuel gasses	5.800	9.156	57,9%	573	344	-39,9%	6.372	9.500	49,1%
Cement and clinker	9.855	7.631	-22,6%	51	28	-44,0%	9.906	7.659	-22,7%
Asphalt	3.822	5.413	41,6%	16	20	24,4%	3.838	5.433	41,6%
Soya bean	0	7		509	3.474	582,6%	509	3.481	584,0%
Potashes	73	163	123,6%	1.207	1.530	26,7%	1.280	1.692	32,2%
Crude oil	11	28	143,1%	22	170	672,4%	33	198	492,2%
Diesel oils	368	131	-64,2%	0	0		368	131	-64,3%
Iron ore	25	78	218,5%	312	4	-98,7%	337	82	-75,6%
Petrol	25	36	42,8%	16	22	39,0%	41	58	41,4%
Phosphates	83	50	-39,9%	0	0		83	50	-39,9%
Natural gas	2	0		0	0		2	0	

Distribution of main goods Loaded 2024



Distribution of main goods Unloaded 2024

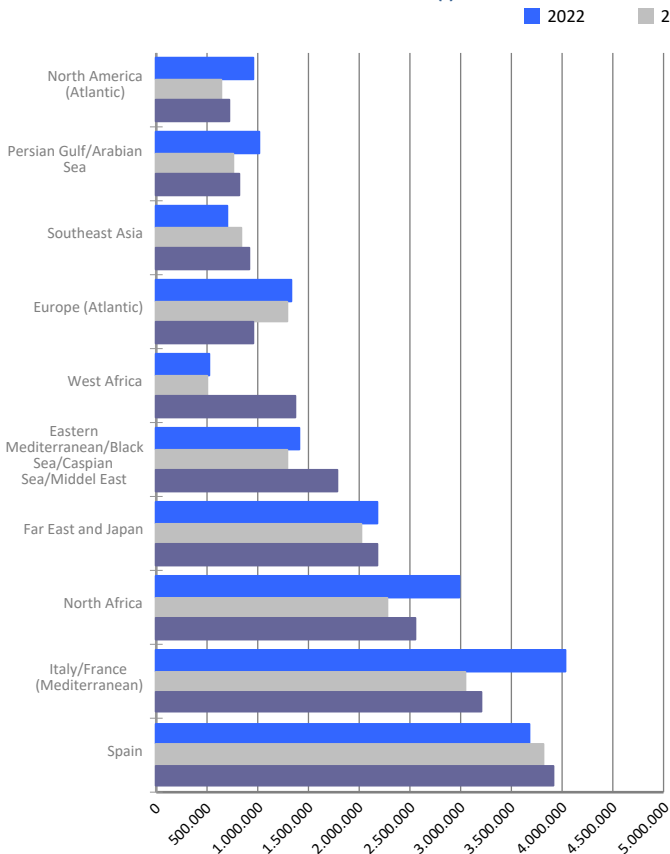


MARITIME TRAFFIC BY ORIGIN/DESTINATION

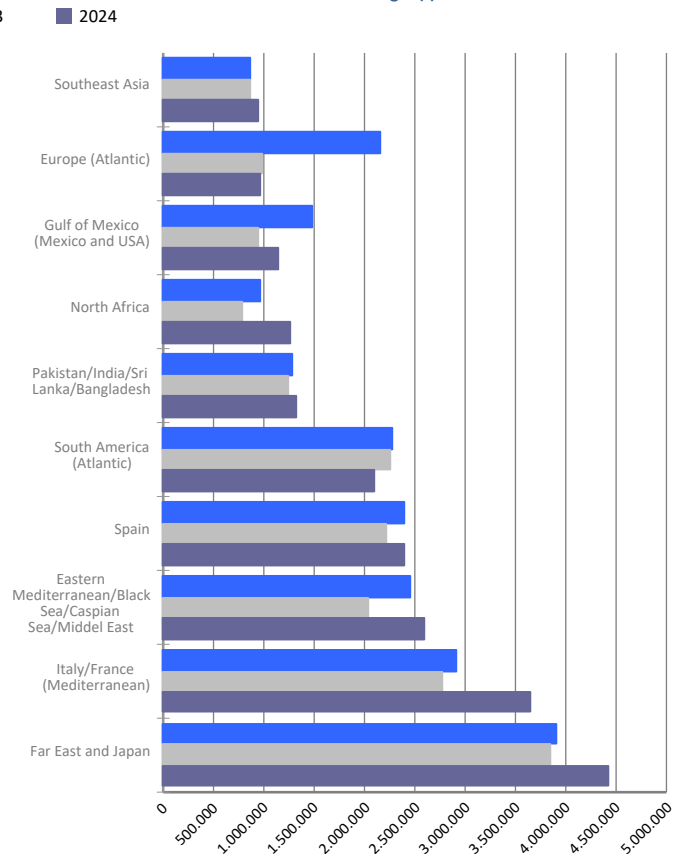
Geographical areas. Tonnes

Geographical areas	Monthly accumulated				% of total accum. 2024
	2023	2024	Diff. 24-23	%	
Tonnes	41.749.562	46.518.728	4.769.166	11,4%	100%
Italy/France (Mediterranean)	5.822.522	6.865.496	1.042.975	17,9%	14,8%
Far East and Japan	5.865.550	6.592.059	726.509	12,4%	14,2%
Spain	6.043.738	6.304.498	260.760	4,3%	13,6%
Eastern Mediterranean/Black Sea/Caspian Sea/Middel	3.328.246	4.385.742	1.057.496	31,8%	9,4%
North Africa	3.073.752	3.808.048	734.296	23,9%	8,2%
South America (Atlantic)	2.568.006	2.516.967	-51.039	-2,0%	5,4%
Europe (Atlantic)	2.294.951	1.929.815	-365.136	-15,9%	4,1%
Pakistan/India/Sri Lanka/Bangladesh	1.791.393	1.913.600	122.207	6,8%	4,1%
Southeast Asia	1.700.919	1.857.025	156.106	9,2%	4,0%
West Africa	982.358	1.854.203	871.845	88,8%	4,0%
Persian Gulf/Arabian Sea	2.435.538	1.754.607	-680.932	-28,0%	3,8%
Gulf of Mexico (Mexico and USA)	1.523.288	1.717.640	194.352	12,8%	3,7%
North America (Atlantic)	927.951	1.161.181	233.230	25,1%	2,5%
Red Sea	603.105	1.112.046	508.941	84,4%	2,4%
Central America and Caribbean	771.184	795.818	24.634	3,2%	1,7%
Unknown area (Tare of empty containers)	340.625	498.331	157.706	46,3%	1,1%
South-Eastern Africa/Indian Ocean	330.850	408.154	77.303	23,4%	0,9%
South America (Pacific)	408.962	372.872	-36.090	-8,8%	0,8%
Canada (Atlantic) and Great Lakes	718.408	355.273	-363.135	-50,5%	0,8%
Australia, New Zealand/Pacific Islands	152.980	168.221	15.241	10,0%	0,4%
North America (Pacific)	65.236	147.132	81.896	125,5%	0,3%

Main areas of destination (t)



Main areas of origin (t)

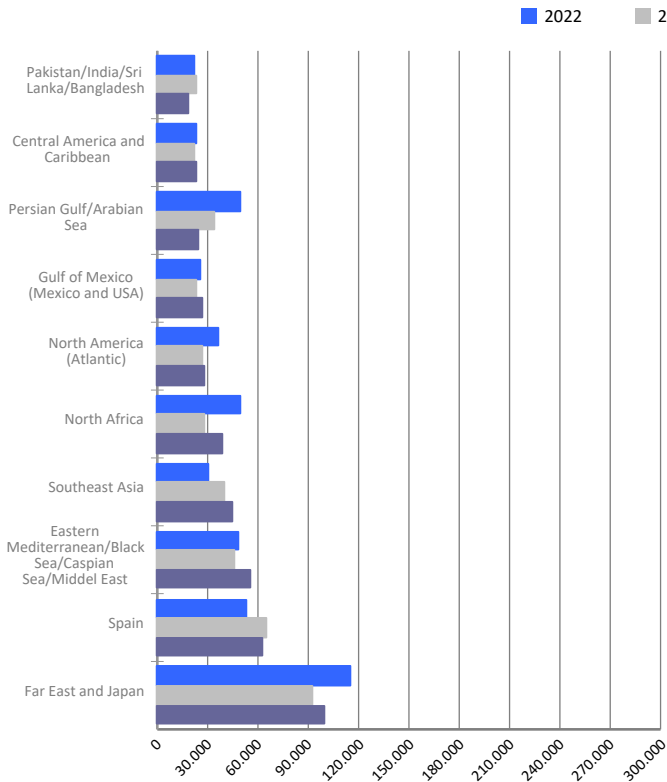


MARITIME TRAFFIC BY ORIGIN/DESTINATION

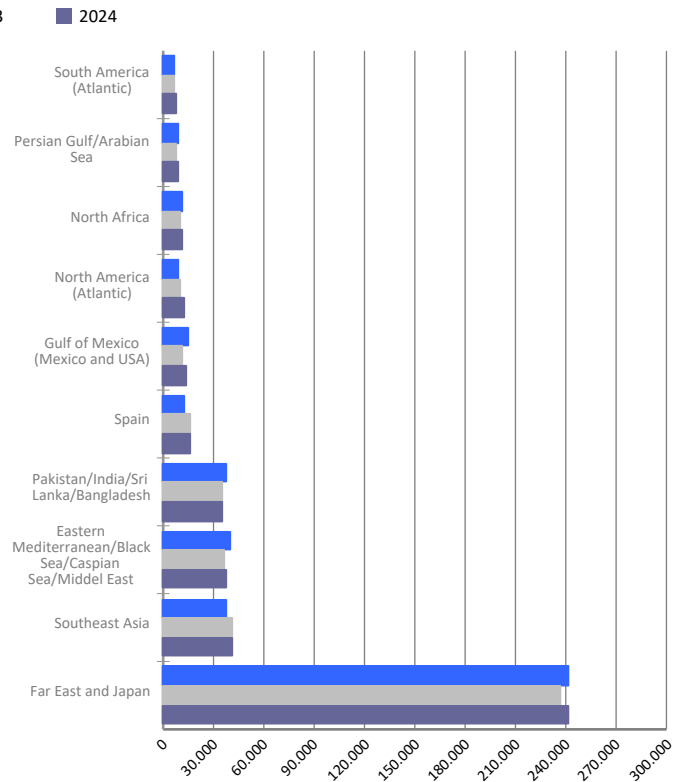
Geographical areas. Full TEU non transit

Geographical areas	Monthly accumulated				% of total accum. 2024
	2023	2024	Diff. 24-23	%	
Full TEU non transit	949.366	988.134	38.769	4,1%	100%
Far East and Japan	329.202	341.765	12.563	3,8%	34,6%
Eastern Mediterranean/Black Sea/Caspian Sea/Middel	82.847	93.424	10.577	12,8%	9,5%
Southeast Asia	82.188	85.816	3.628	4,4%	8,7%
Spain	80.513	79.827	-687	-0,9%	8,1%
Pakistan/India/Sri Lanka/Bangladesh	58.457	54.242	-4.215	-7,2%	5,5%
North Africa	37.813	49.419	11.607	30,7%	5,0%
North America (Atlantic)	37.489	41.536	4.047	10,8%	4,2%
Gulf of Mexico (Mexico and USA)	34.574	40.812	6.238	18,0%	4,1%
Persian Gulf/Arabian Sea	41.443	34.094	-7.349	-17,7%	3,5%
Central America and Caribbean	27.150	27.766	616	2,3%	2,8%
South America (Atlantic)	23.729	23.930	202	0,8%	2,4%
South America (Pacific)	20.939	22.838	1.899	9,1%	2,3%
Red Sea	19.290	21.246	1.957	10,1%	2,2%
West Africa	19.622	21.061	1.439	7,3%	2,1%
South-Eastern Africa/Indian Ocean	16.765	17.127	362	2,2%	1,7%
Canada (Atlantic) and Great Lakes	8.878	9.423	545	6,1%	1,0%
Australia, New Zealand/Pacific Islands	7.917	8.087	170	2,1%	0,8%
Italy/France (Mediterranean)	13.107	6.676	-6.431	-49,1%	0,7%
North America (Pacific)	4.324	5.418	1.094	25,3%	0,5%
Europe (Atlantic)	3.121	3.629	508	16,3%	0,4%

Main areas of destination
Full TEU non transit



Main areas of origin
Full TEU non transit

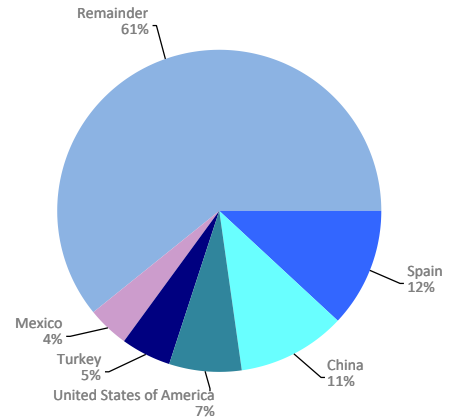


MARITIME TRAFFIC BY ORIGIN/DESTINATION

Ranking countries. Full TEU non transit

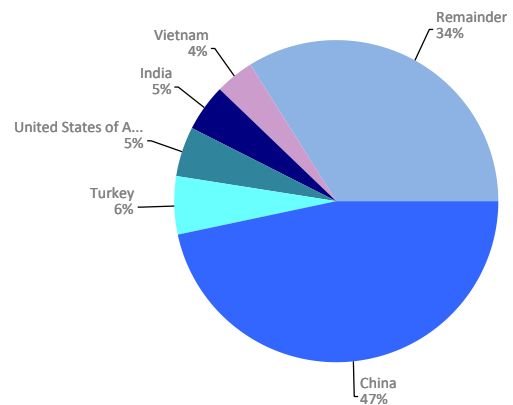
Loaded	Full TEU	% 24-23	% a/packaging
Spain	63.026	-2,9%	12,0%
China	55.824	9,7%	10,7%
United States of America	38.411	9,1%	7,3%
Turkey	25.354	20,6%	4,8%
Mexico	22.469	16,1%	4,3%
Morocco	20.969	47,7%	4,0%
Japan	16.638	-0,9%	3,2%
Saudi Arabia	15.779	1,2%	3,0%
United Arab Emirates	14.710	-29,6%	2,8%
India	14.067	-27,9%	2,7%
Vietnam	12.977	39,1%	2,5%
Malaysia	12.340	6,0%	2,4%
Korea (South)	11.926	5,5%	2,3%
Egypt	10.855	39,0%	2,1%
Israel	10.640	21,7%	2,0%
Remainder	177.085	0,8%	33,9%
TOTAL	523.069	4,0%	100%

Main countries. Loaded



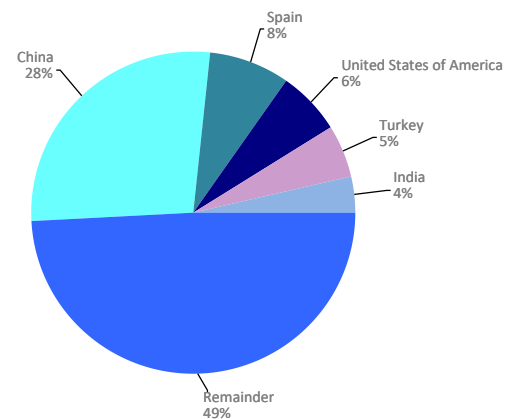
Unloaded	Full TEU	% 24-23	% a/packaging
China	216.848	3,9%	46,6%
Turkey	26.871	3,9%	5,8%
United States of America	23.859	23,0%	5,1%
India	21.656	8,9%	4,7%
Vietnam	18.372	-4,2%	4,0%
Spain	16.801	7,6%	3,6%
Korea (South)	15.372	-7,6%	3,3%
Saudi Arabia	9.209	32,4%	2,0%
Egypt	8.348	10,5%	1,8%
Bangladesh	7.332	-20,8%	1,6%
Thailand	6.783	30,9%	1,5%
Brazil	6.250	24,8%	1,3%
Greece	6.212	2,6%	1,3%
Indonesia	5.513	-10,3%	1,2%
Pakistan	5.160	-4,4%	1,1%
Remainder	70.483	1,1%	15,2%
TOTAL	465.065	4,2%	100%

Main countries. Unloaded



Total	Full TEU	% 24-23	% a/packaging
China	272.672	5,0%	27,6%
Spain	79.827	-0,9%	8,1%
United States of America	62.269	14,1%	6,3%
Turkey	52.225	11,4%	5,3%
India	35.723	-9,3%	3,6%
Vietnam	31.349	10,0%	3,2%
Mexico	27.530	14,8%	2,8%
Korea (South)	27.298	-2,3%	2,8%
Saudi Arabia	24.988	10,8%	2,5%
Morocco	22.759	45,1%	2,3%
Japan	20.868	-4,1%	2,1%
Egypt	19.203	25,0%	1,9%
United Arab Emirates	16.965	-26,8%	1,7%
Greece	16.143	11,7%	1,6%
Brazil	15.640	12,2%	1,6%
Remainder	262.678	0,6%	26,6%
TOTAL	988.134	4,1%	100%

Main countries. Total



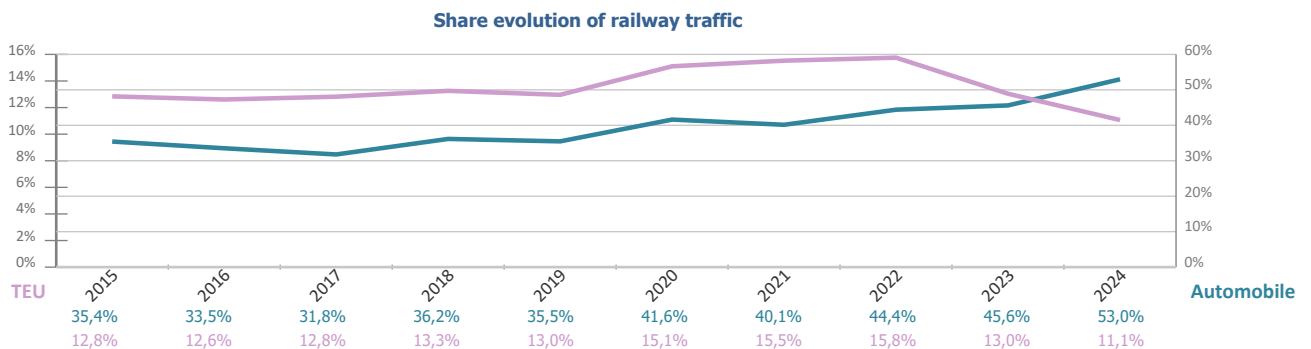
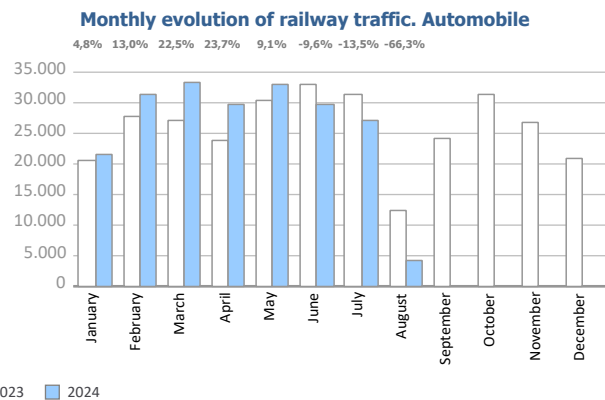
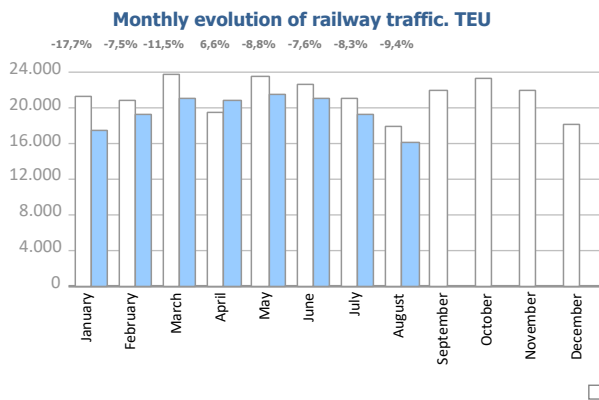
RAILWAY TRAFFIC

Monthly evolution of railway traffic. TEU

Monthly evolution of railway traffic	TEU 2023			TEU 2024			%		% of total port traffic 2024
	Loaded	Unloaded	Total	Loaded	Unloaded	Total	Monthly	Accumulated	
January	10.946	10.351	21.297	7.901	9.633	17.534	-17,7%	-17,7%	11,4%
February	10.012	10.850	20.862	8.751	10.545	19.296	-7,5%	-12,6%	12,2%
March	11.720	12.120	23.840	9.664	11.438	21.102	-11,5%	-12,2%	11,1%
April	9.632	9.846	19.478	10.070	10.684	20.754	6,6%	-7,9%	12,4%
May	12.232	11.299	23.531	10.133	11.320	21.453	-8,8%	-8,1%	11,2%
June	11.297	11.397	22.694	10.637	10.334	20.971	-7,6%	-8,0%	11,9%
July	10.049	10.979	21.028	9.288	9.992	19.280	-8,3%	-8,1%	10,6%
August	8.856	9.030	17.886	7.503	8.699	16.202	-9,4%	-8,2%	8,3%
September	10.815	11.129	21.944						
October	11.031	12.246	23.277						
November	10.067	11.795	21.862						
December	8.192	9.931	18.122						
Total	124.847	130.971	255.818	73.947	82.645	156.592			11,1%

Monthly evolution of railway traffic. Automobile

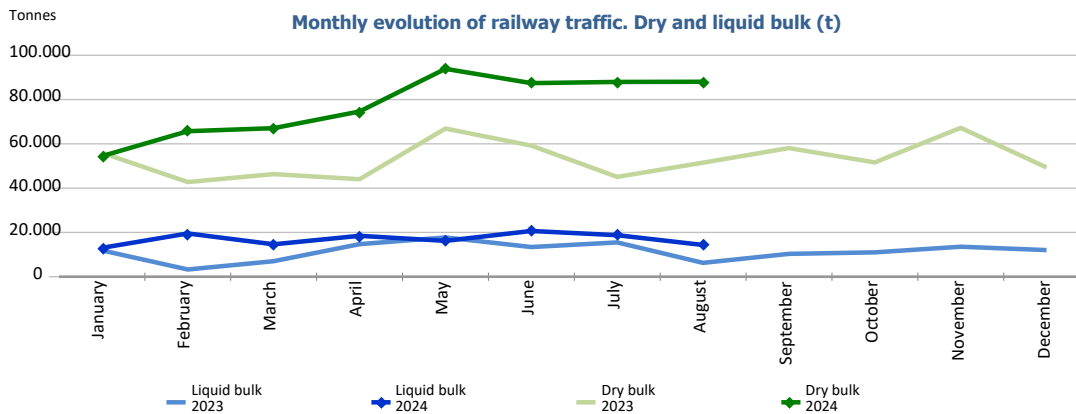
Monthly evolution of railway traffic	Automobile 2023			Automobile 2024			%		% of total port traffic 2024
	Loaded	Unloaded	Total	Loaded	Unloaded	Total	Monthly	Accumulated	
January	4.150	16.267	20.417	2.696	18.708	21.404	4,8%	4,8%	52,4%
February	5.096	22.553	27.649	4.150	27.099	31.249	13,0%	9,5%	61,5%
March	3.567	23.677	27.244	4.458	28.926	33.384	22,5%	14,2%	51,9%
April	4.515	19.415	23.930	3.573	26.030	29.603	23,7%	16,5%	55,4%
May	5.929	24.358	30.287	4.399	28.658	33.057	9,1%	14,8%	51,0%
June	5.878	27.021	32.899	4.552	25.180	29.732	-9,6%	9,9%	51,4%
July	6.807	24.450	31.257	5.752	21.286	27.038	-13,5%	6,1%	63,5%
August	1.982	10.394	12.376	799	3.375	4.174	-66,3%	1,7%	19,8%
September	5.584	18.633	24.217						
October	6.117	25.138	31.255						
November	5.350	21.525	26.875						
December	3.150	17.854	21.004						
Total	58.125	251.285	309.410	30.379	179.262	209.641			53,0%



RAILWAY TRAFFIC

Monthly evolution of railway traffic. Dry and liquid bulk. Tonnes

Monthly evolution of railway traffic	Tonnes 2023			Tonnes 2024			%	
	Dry bulk	Liquid bulk	Total	Dry bulk	Liquid bulk	Total	Monthly	Accumulated
January	55.964	11.888	67.852	54.457	13.024	67.481	-0,5%	-0,5%
February	42.746	3.263	46.009	65.710	19.534	85.244	85,3%	34,1%
March	46.334	7.014	53.348	67.073	14.630	81.703	53,2%	40,2%
April	44.027	14.701	58.728	74.604	18.473	93.077	58,5%	45,0%
May	66.894	17.738	84.632	93.873	16.191	110.064	30,1%	40,9%
June	59.200	13.398	72.598	87.416	20.649	108.065	48,9%	42,4%
July	45.081	15.485	60.566	87.962	18.748	106.710	76,2%	47,0%
August	51.511	6.251	57.762	88.033	14.326	102.359	77,2%	50,5%
September	58.090	10.320	68.410					
October	51.617	10.995	62.612					
November	67.236	13.547	80.783					
December	49.345	12.016	61.361					
Total	638.045	136.616	774.661	619.128	135.575	754.703		



Railway traffic.

Railway gauge traffic (u)	Monthly accumulated		%	% of accumulated total 2024
	2023	2024		
Iberian gauge	4.669	4.534	-2,9%	59,6%
UIC	308	622	101,9%	8,2%
FGC	1.898	2.450	29,1%	32,2%
Total	6.875	7.606	10,6%	100%

