

Port of Barcelona traffic statistics

Accumulated data October 2024

Statistics Service

Index

Traffic indicators

Total traffic	3
Main indicators	4
Breakdown of total traffic	5
Breakdown of traffic in transit	6
Monthly evolution of traffic	7

Container traffic

TEU evolution	8
Container traffic (TEU)	9

Passenger traffic

Passenger traffic	10
Passenger classification	11

Automobile traffic

Automobile traffic	12
--------------------	----

Short Sea Shipping traffic (SSS)

SSS Goods classification	13
SSS General cargo and Motorways of the sea (MoS)	14
SSS Ranking countries	15

Vessel traffic

Vessel traffic	16
----------------	----

Goods traffic

Mode of packaging and navigation	17
Goods by classification 4.3.7.	18
Goods ranking	19
Containerized goods by classification 4.3.7.	20

Maritime traffic by origin/destination

Geographical areas. Tonnes	21
Geographical areas. Full TEU non transit	22
Ranqing countries. Full TEU non transit	23

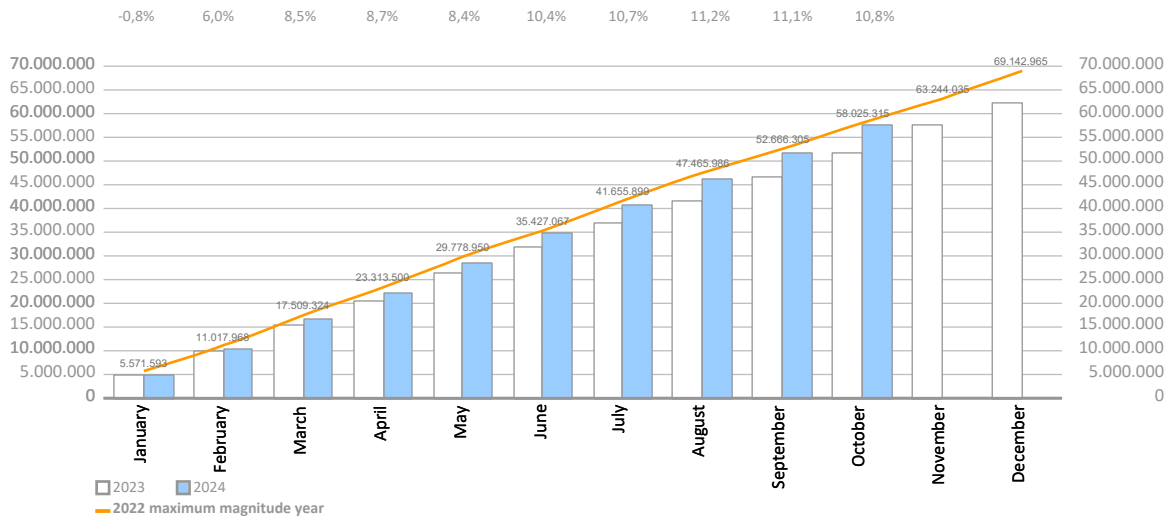
Railway traffic

Evolution of railway traffic (TEU and automobile)	24
Evolution of railway traffic (Solid and liquid bulk)	25
Railway gauge traffic	25

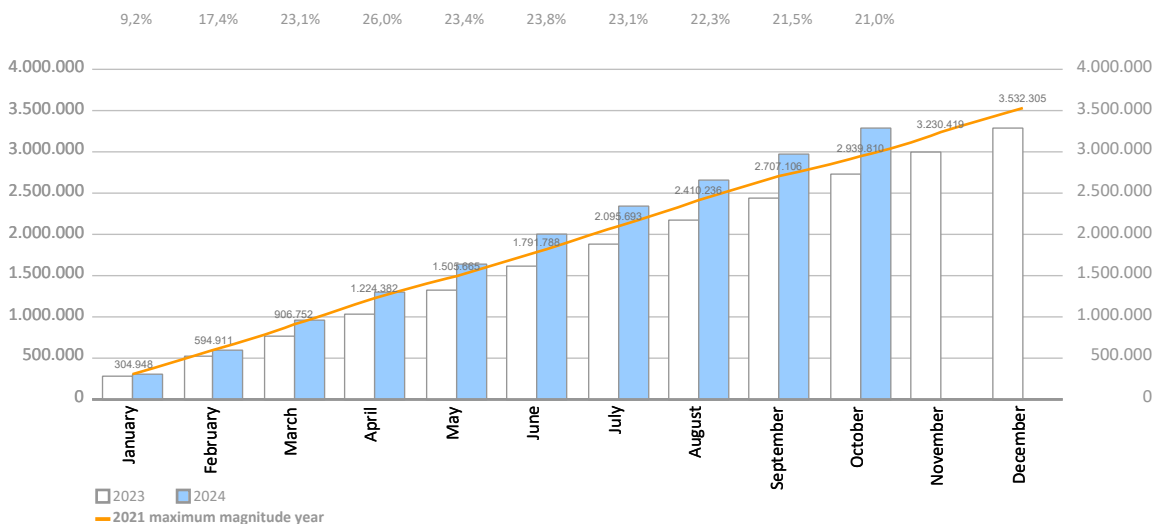
TRAFFIC INDICATORS

Total traffic	Monthly accumulated				% 24-23 accum. September	% 24-23 accum. August	Total traffic 2023
	2023	2024	Diff. 24-23	%			
Total throughput (tonnes)	51.914.262	57.545.482	5.631.220	10,8%	11,1%	11,2%	62.427.898
Supplies	1.370.701	1.580.388	209.687	15,3%	14,6%	14,1%	1.603.429
Fishing	1.418	2.490	1.072	75,6%	76,4%	75,6%	1.544
TOTAL TRAFFIC (tonnes)	53.286.381	59.128.361	5.841.979	11,0%	11,2%	11,3%	64.032.870
TEU	2.719.279	3.289.537	570.258	21,0%	21,5%	22,3%	3.280.239
UTI	355.404	367.333	11.930	3,4%	2,6%	2,7%	416.003
Automobiles (units)	653.286	566.481	-86.805	-13,3%	-13,8%	-12,0%	790.318
Vessels (units)	7.406	7.110	-296	-4,0%	-3,9%	-3,4%	8.766
Railway traffic (units)	8.740	9.266	526	6,0%	6,5%	10,6%	10.439
Cruise passengers (units)	3.142.759	3.239.574	96.815	3,1%	6,1%	4,9%	3.569.125
Ferry passengers (units)	1.572.104	1.580.989	8.885	0,6%	1,1%	0,8%	1.735.495
Automobile passengers (units)	463.804	477.193	13.389	2,9%	3,4%	3,1%	515.293

Monthly evolution of the accumulated traffic of goods. Tonnes



Monthly evolution of the accumulated traffic of goods. TEU



TRAFFIC INDICATORS

Main indicators	Monthly accumulated				Last 12 months	Total traffic 2023	% 12 months-2023
	2023	2024	Diff. 24-23	%			
Goods indicators by navigation and operation (tonnes)							
Navigation (t)	51.914.262	57.545.482	5.631.220	10,8%	68.059.118	62.427.898	9,0%
Domestic	6.857.701	7.281.430	423.729	6,2%	8.452.781	8.029.052	5,3%
Foreign	45.056.561	50.264.052	5.207.491	11,6%	59.606.337	54.398.845	9,6%
Operation (t)	51.914.262	57.545.482	5.631.220	10,8%	68.059.118	62.427.898	9,0%
Loaded	16.161.511	16.568.177	406.666	2,5%	19.569.929	19.163.264	2,1%
Unloaded	18.892.600	18.822.819	-69.782	-0,4%	22.597.918	22.667.699	-0,3%
Transit	16.860.151	22.154.487	5.294.336	31,4%	25.891.271	20.596.935	25,7%
Goods indicators by main units							
Containers (TEU)	2.719.279	3.289.537	570.258	21,0%	3.850.497	3.280.239	17,4%
TEU O/D	1.633.466	1.780.969	147.503	9,0%	2.107.864	1.960.361	7,5%
TEU transit	1.085.814	1.508.568	422.755	38,9%	1.742.633	1.319.879	32,0%
Containerized tonnes	27.788.462	31.996.536	4.208.074	15,1%	37.734.176	33.526.101	12,6%
Level of containerization	74,46%	76,29%			76,41%	74,90%	
Passengers (u)	4.714.863	4.820.563	105.700	2,2%	5.410.320	5.304.620	2,0%
Regular line	1.572.104	1.580.989	8.885	0,6%	1.744.380	1.735.495	0,5%
Pleasure cruises	3.142.759	3.239.574	96.815	3,1%	3.665.940	3.569.125	2,7%
Automobiles (u)	653.286	566.481	-86.805	-13,3%	703.513	790.318	-11,0%
Loaded	344.970	354.397	9.427	2,7%	421.859	412.432	2,3%
Unloaded	206.188	126.846	-79.342	-38,5%	176.240	255.582	-31,0%
Transit	102.128	85.238	-16.890	-16,5%	105.414	122.304	-13,8%
Vessels (u)	7.406	7.110	-296	-4,0%	8.470	8.766	-3,4%
Number of calls	7.406	7.110	-296	-4,0%	8.470	8.766	-3,4%
GT	317.253.657	310.538.857	-6.714.800	-2,1%	367.585.916	374.300.716	-1,8%
Average tonnes by vessel	7.010	8.094	1.084	15,5%	8.035	7.122	12,8%
UTI	355.404	367.333	11.930	3,4%	427.932	416.003	2,9%
Domestic	224.374	228.886	4.512	2,0%	264.041	259.529	1,7%
% Full	61,8%	62,0%			62,1%	61,9%	
Foreign	131.030	138.447	7.418	5,7%	163.891	156.474	4,7%
% Full	90,4%	89,5%			89,6%	90,4%	

TRAFFIC INDICATORS

Breakdown of total traffic (tonnes)	Monthly accumulated				% 24-23 accum. September	% 24-23 accum. August	% of total accum. 2024
	2023	2024	Diff. 24-23	%			
Goods indicators by type of packaging (t)	51.914.262	57.545.482	5.631.220	10,8%	11,1%	11,2%	100%
Liquid bulk	10.656.976	11.770.793	1.113.818	10,5%	10,8%	9,9%	20,5%
Hydrocarbons	7.749.260	7.977.316	228.056	2,9%	2,5%	0,8%	13,9%
Petrol	2.233.994	3.470.008	1.236.014	55,3%	63,9%	54,4%	6,0%
Diesel oils	1.711.551	1.877.530	165.979	9,7%	2,8%	3,2%	3,3%
Natural gas	2.631.013	1.625.995	-1.005.018	-38,2%	-40,7%	-42,5%	2,8%
Fuel oil	987.642	763.751	-223.891	-22,7%	-24,8%	-23,6%	1,3%
Other petroleum products	167.570	222.462	54.892	32,8%	45,8%	51,6%	0,4%
Remainder	17.490	17.569	79	0,5%	0,5%	0,5%	0,0%
Other liquid bulk	2.907.715	3.793.478	885.762	30,5%	32,2%	33,1%	6,6%
Chemical products	989.930	2.106.239	1.116.309	112,8%	105,1%	104,8%	3,7%
Biofuel	1.154.298	872.851	-281.446	-24,4%	-20,7%	-20,6%	1,5%
Oils and fats	699.590	715.636	16.046	2,3%	6,4%	10,1%	1,2%
Natural/artificial fertilizer	45.089	49.232	4.143	9,2%	22,0%	22,0%	0,1%
Other cargo by type	6.890	32.993	26.103	378,8%	766,4%	766,4%	0,1%
Remainder	11.918	16.526	4.608	38,7%	34,1%	66,1%	0,0%
Dry bulk	3.939.776	3.834.808	-104.968	-2,7%	-5,9%	-10,8%	6,7%
Special installation	3.687.327	3.614.877	-72.449	-2,0%	-6,0%	-11,1%	6,3%
Soya bean	1.239.003	1.353.812	114.809	9,3%	6,5%	-5,2%	2,4%
Cereals and flours	719.852	686.185	-33.667	-4,7%	-18,1%	-15,6%	1,2%
Cement and clinker	846.263	658.442	-187.821	-22,2%	-27,1%	-31,4%	1,1%
Potashes	403.940	486.730	82.790	20,5%	21,3%	31,2%	0,8%
Common salt	458.090	406.893	-51.197	-11,2%	-1,4%	-15,3%	0,7%
Remainder	20.179	22.816	2.637	13,1%	-11,3%	-11,3%	0,0%
Without special installation	252.450	219.931	-32.519	-12,9%	-4,7%	-5,5%	0,4%
Scrap iron	160.898	126.989	-33.908	-21,1%	-17,0%	-13,6%	0,2%
Other non-metallic minerals	49.230	35.033	-14.198	-28,8%	-11,5%	-23,3%	0,1%
Other minerals and metallic waste	16.416	21.150	4.734	28,8%	93,8%	22,8%	0,0%
Chemical products	17.300	18.495	1.195	6,9%	-7,3%	23,9%	0,0%
Other cargo by type	0	9.251	9.251	0,0%	0,0%	0,0%	0,0%
Remainder	8.606	9.013	407	4,7%	4,7%	1,0%	0,0%
General cargo	37.317.510	41.939.881	4.622.371	12,4%	13,0%	14,1%	72,9%
Containerized	27.788.462	31.996.536	4.208.074	15,1%	16,5%	18,1%	55,6%
Tare of containers	5.558.276	6.663.613	1.105.337	19,9%	20,4%	21,3%	11,6%
Chemical products	4.109.428	5.240.492	1.131.064	27,5%	27,5%	27,8%	9,1%
Other cargo by type	3.013.317	3.651.801	638.484	21,2%	23,3%	23,4%	6,3%
Other food products	3.032.961	2.559.164	-473.798	-15,6%	-12,7%	-9,1%	4,4%
Machinery and spare parts	1.764.837	2.178.743	413.906	23,5%	24,8%	24,0%	3,8%
Remainder	10.309.642	11.702.724	1.393.081	13,5%	15,0%	17,6%	20,3%
Non-containerized	9.529.048	9.943.345	414.296	4,3%	2,9%	2,6%	17,3%
Tare of platform and wagons (Ro-Ro)	3.689.532	3.802.862	113.330	3,1%	2,2%	2,1%	6,6%
Other cargo by type	1.531.371	1.663.251	131.880	8,6%	7,3%	7,5%	2,9%
Machinery and spare parts	941.178	978.931	37.753	4,0%	4,0%	5,2%	1,7%
Automobiles and parts	1.085.406	903.707	-181.699	-16,7%	-18,0%	-16,7%	1,6%
Other food products	464.156	470.642	6.486	1,4%	0,5%	-0,1%	0,8%
Remainder	1.817.405	2.123.952	306.547	16,9%	13,3%	10,3%	3,7%

TRAFFIC INDICATORS

Breakdown of traffic in transit (tonnes)	Monthly accumulated				% 24-23 accum. September	% 24-23 accum. August	% of total accum. 2024
	2023	2024	Diff. 24-23	%			
Goods indicators by type of packaging (t)	16.860.151	22.154.487	5.294.336	31,4%	34,1%	36,5%	100%
Liquid bulk	3.435.036	5.511.325	2.076.289	60,4%	60,7%	55,8%	24,9%
Hydrocarbons	2.211.675	3.413.146	1.201.471	54,3%	54,1%	48,2%	15,4%
Petrol	993.255	2.233.520	1.240.265	124,9%	139,4%	121,5%	10,1%
Fuel oil	698.277	630.095	-68.181	-9,8%	-12,8%	-11,7%	2,8%
Diesel oils	482.957	524.047	41.090	8,5%	-6,3%	-8,2%	2,4%
Other petroleum products	37.187	25.484	-11.703	-31,5%	44,1%		0,1%
Remainder	0	0	0				0,0%
Other liquid bulk	1.223.360	2.098.179	874.818	71,5%	72,2%	68,5%	9,5%
Chemical products	467.112	1.389.978	922.866	197,6%	182,1%	179,8%	6,3%
Biofuel	734.079	658.354	-75.725	-10,3%	-5,6%	-7,7%	3,0%
Oils and fats	19.087	38.449	19.362	101,4%	101,4%	87,8%	0,2%
Other cargo by type	3.082	11.397	8.315	269,7%			0,1%
Remainder	0	0	0				0,0%
Dry bulk	25.464	0	-25.464				0,0%
Special installation	25.464	0	-25.464				0,0%
Potashes	12.766	0	-12.766				0,0%
Cereals and flours	12.698	0	-12.698				0,0%
Remainder	0	0	0				0,0%
Without special installation	0	0	0				0,0%
Remainder	0	0	0				0,0%
General cargo	13.399.651	16.643.162	3.243.511	24,2%	27,6%	31,7%	75,1%
Containerized	13.023.615	16.187.806	3.164.191	24,3%	27,8%	31,8%	73,1%
Tare of containers	2.241.765	3.061.244	819.479	36,6%	39,3%	41,5%	13,8%
Chemical products	1.535.911	2.204.913	669.002	43,6%	42,7%	43,3%	10,0%
Other cargo by type	1.322.345	1.810.417	488.072	36,9%	42,2%	45,2%	8,2%
Other food products	1.961.794	1.538.301	-423.493	-21,6%	-16,8%	-11,6%	6,9%
Other construction materials	773.776	1.244.557	470.781	60,8%	60,5%	63,1%	5,6%
Remainder	5.188.024	6.328.374	1.140.350	22,0%	26,2%	31,9%	28,6%
Non-containerized	376.036	455.356	79.321	21,1%	20,8%	25,2%	2,1%
Automobiles and parts	167.126	153.655	-13.471	-8,1%	-7,7%	-4,2%	0,7%
Tare of platform and wagons (Ro-Ro)	48.439	77.137	28.699	59,2%	59,8%	65,5%	0,3%
Other cargo by type	47.132	58.576	11.444	24,3%	32,6%	42,0%	0,3%
Machinery and spare parts	56.771	47.796	-8.976	-15,8%	-19,3%	-23,9%	0,2%
Oils and fats	14.028	40.282	26.254	187,2%	191,1%	229,6%	0,2%
Remainder	42.540	77.910	35.370	83,1%	74,9%	82,9%	0,4%

TRAFFIC INDICATORS

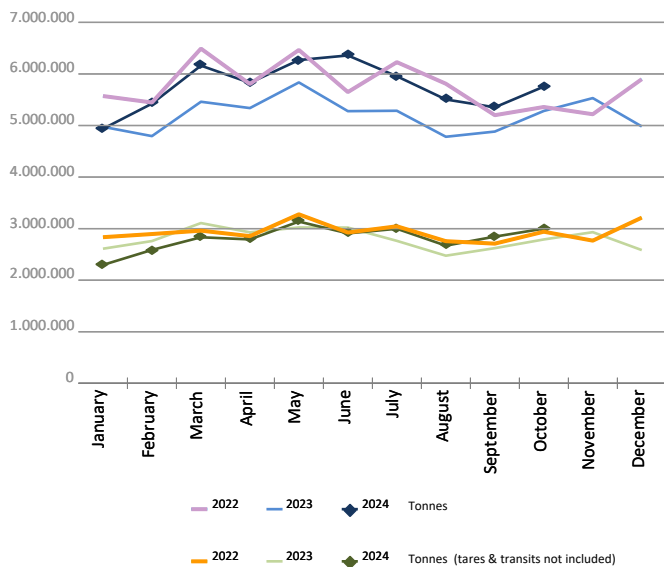
Monthly evolution of traffic. Tonnes

Monthly evolution of traffic	Total tonnes			%		Tonnes (tares & transits not included)			%	
	2023	2024	Diff. 24-23	Monthly	Accumulated	2023	2024	Diff. 24-23	Monthly	Accumulated
January	4.974.831	4.935.928	-38.903	-0,8%	-0,8%	2.610.318	2.296.193	-314.125	-12,0%	-12,0%
February	4.794.198	5.423.826	629.628	13,1%	6,0%	2.759.119	2.586.819	-172.300	-6,2%	-9,1%
March	5.460.878	6.161.229	700.351	12,8%	8,5%	3.107.624	2.832.299	-275.325	-8,9%	-9,0%
April	5.337.938	5.828.413	490.475	9,2%	8,7%	2.928.109	2.790.566	-137.543	-4,7%	-7,9%
May	5.835.621	6.269.832	434.211	7,4%	8,4%	3.022.618	3.136.795	114.177	3,8%	-5,4%
June	5.278.336	6.359.080	1.080.743	20,5%	10,4%	3.020.382	2.908.191	-112.190	-3,7%	-5,1%
July	5.286.328	5.955.335	669.007	12,7%	10,7%	2.762.709	2.997.318	234.609	8,5%	-3,3%
August	4.781.440	5.504.891	723.451	15,1%	11,2%	2.474.579	2.670.075	195.495	7,9%	-2,1%
September	4.882.475	5.352.906	470.431	9,6%	11,1%	2.621.228	2.844.823	223.595	8,5%	-1,0%
October	5.282.217	5.754.043	471.826	8,9%	10,8%	2.789.825	2.999.823	209.998	7,5%	-0,1%
November	5.531.706					2.931.465				
December	4.981.930					2.583.935				
Total	62.427.898	57.545.482				33.611.911	28.062.902			

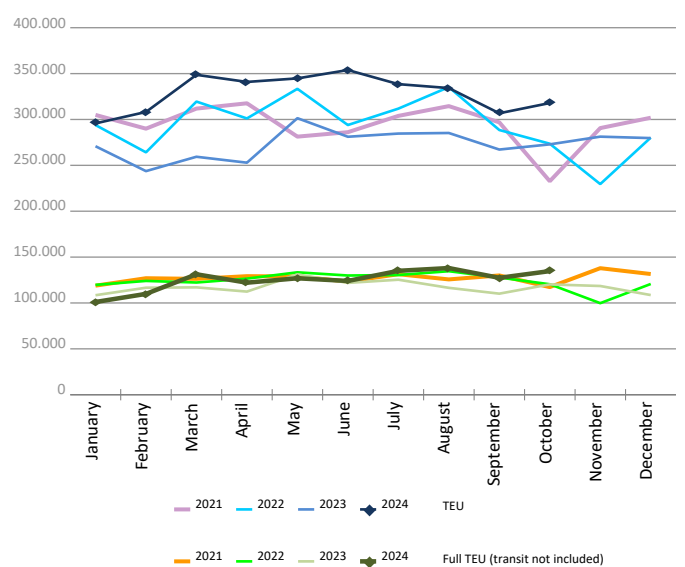
Monthly evolution of traffic. TEU

Monthly evolution of traffic	Total TEU			%		Full TEU (transit not included)			%	
	2023	2024	Diff. 24-23	Monthly	Accumulated	2023	2024	Diff. 24-23	Monthly	Accumulated
January	270.816	295.728	24.912	9,2%	9,2%	108.430	101.061	-7.369	-6,8%	-6,8%
February	243.685	308.167	64.482	26,5%	17,4%	116.640	109.884	-6.757	-5,8%	-6,3%
March	259.357	348.654	89.296	34,4%	23,1%	117.011	131.259	14.248	12,2%	0,0%
April	252.905	340.931	88.026	34,8%	26,0%	112.397	122.134	9.736	8,7%	2,2%
May	301.382	344.792	43.410	14,4%	23,4%	131.146	126.935	-4.212	-3,2%	1,0%
June	281.167	353.878	72.712	25,9%	23,8%	121.905	124.001	2.097	1,7%	1,1%
July	284.638	338.485	53.847	18,9%	23,1%	125.356	135.035	9.680	7,7%	2,1%
August	285.262	334.218	48.956	17,2%	22,3%	116.482	138.045	21.563	18,5%	4,1%
September	267.204	306.763	39.559	14,8%	21,5%	110.162	127.401	17.239	15,6%	5,3%
October	272.864	317.923	45.060	16,5%	21,0%	120.252	134.736	14.484	12,0%	6,0%
November	281.267					118.502				
December	279.693					108.620				
Total	3.280.239	3.289.537				1.406.901	1.250.488			

Goods (total tonnes)



Containers (total TEU)



CONTAINER TRAFFIC

TEU evolution

Full-unloaded foreign	Full TEU			%		Full-loaded foreign	Full TEU			%	
	2023	2024	Diff. 24-23	Monthly	Accumulated		2023	2024	Diff. 24-23	Monthly	Accumulated
January	49.138	41.691	-7.447	-15,2%	-15,2%	January	51.046	49.933	-1.113	-2,2%	-2,2%
February	51.449	44.498	-6.951	-13,5%	-14,3%	February	56.052	55.500	-552	-1,0%	-1,6%
March	44.515	58.372	13.858	31,1%	-0,4%	March	60.781	61.863	1.082	1,8%	-0,3%
April	51.432	57.413	5.982	11,6%	2,8%	April	51.392	55.227	3.835	7,5%	1,5%
May	64.095	56.609	-7.486	-11,7%	-0,8%	May	56.516	60.495	3.979	7,0%	2,6%
June	53.940	59.082	5.142	9,5%	1,0%	June	57.195	54.879	-2.316	-4,0%	1,5%
July	59.685	63.600	3.915	6,6%	1,9%	July	54.831	61.609	6.779	12,4%	3,0%
August	56.638	66.920	10.282	18,2%	4,0%	August	50.134	61.354	11.221	22,4%	5,2%
September	48.415	65.354	16.939	35,0%	7,1%	September	50.745	52.169	1.424	2,8%	5,0%
October	52.489	61.796	9.307	17,7%	8,2%	October	57.938	62.294	4.357	7,5%	5,2%
November	48.781					November	59.645				
December	43.001					December	55.662				
Total	623.574	575.333				Total	661.934	575.322			

Full-unloaded domestic	Full TEU			%		Full-loaded domestic	Full TEU			%	
	2023	2024	Diff. 24-23	Monthly	Accumulated		2023	2024	Diff. 24-23	Monthly	Accumulated
January	1.702	2.174	473	27,8%	27,8%	January	6.545	7.264	719	11,0%	11,0%
February	1.836	2.269	434	23,6%	25,6%	February	7.304	7.617	313	4,3%	7,4%
March	2.227	2.280	53	2,4%	16,6%	March	9.488	8.744	-744	-7,8%	1,2%
April	1.818	2.011	194	10,6%	15,2%	April	7.756	7.483	-274	-3,5%	0,0%
May	2.223	2.226	3	0,1%	11,8%	May	8.313	7.606	-708	-8,5%	-1,8%
June	1.938	1.919	-19	-1,0%	9,7%	June	8.833	8.122	-712	-8,1%	-2,9%
July	1.881	1.988	107	5,7%	9,1%	July	8.960	7.839	-1.121	-12,5%	-4,4%
August	1.989	1.935	-54	-2,7%	7,6%	August	7.722	7.836	115	1,5%	-3,7%
September	2.163	1.981	-182	-8,4%	5,7%	September	8.839	7.898	-942	-10,7%	-4,5%
October	2.164	2.373	209	9,7%	6,1%	October	7.662	8.273	611	8,0%	-3,4%
November	1.913					November	8.164				
December	1.886					December	8.072				
Total	23.737	21.155				Total	97.656	78.679			

Full - Transit	Full TEU			%		Empty	Empty TEU			%	
	2023	2024	Diff. 24-23	Monthly	Accumulated		2023	2024	Diff. 24-23	Monthly	Accumulated
January	97.136	112.121	14.985	15,4%	15,4%	January	65.251	82.546	17.296	26,5%	26,5%
February	71.919	117.906	45.987	63,9%	36,1%	February	55.126	80.377	25.251	45,8%	35,3%
March	83.590	133.678	50.088	59,9%	44,0%	March	58.757	83.718	24.961	42,5%	37,7%
April	83.957	134.381	50.425	60,1%	48,0%	April	56.551	84.416	27.865	49,3%	40,5%
May	97.501	116.214	18.713	19,2%	41,5%	May	72.735	101.644	28.909	39,7%	40,3%
June	84.535	139.946	55.411	65,5%	45,4%	June	74.728	89.932	15.204	20,3%	36,4%
July	93.112	121.785	28.673	30,8%	43,2%	July	66.171	81.665	15.494	23,4%	34,5%
August	83.799	107.824	24.025	28,7%	41,5%	August	84.981	88.349	3.368	4,0%	29,6%
September	86.284	96.701	10.417	12,1%	38,2%	September	70.759	82.662	11.903	16,8%	28,1%
October	90.691	97.675	6.985	7,7%	35,0%	October	61.921	85.513	23.592	38,1%	29,1%
November	86.555					November	76.210				
December	90.642					December	80.432				
Total	1.049.718	1.178.229				Total	823.621	860.820			

CONTAINER TRAFFIC

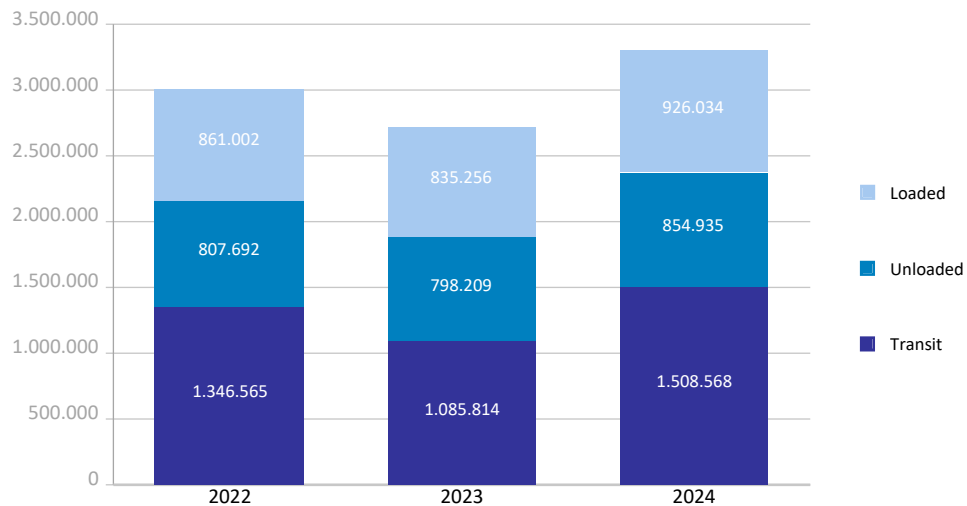
TEU

Container traffic	Monthly accumulated 2023			Monthly accumulated 2024			%
	Domestic	Foreign	Total	Domestic	Foreign	Total	
Total traffic	187.137	2.532.142	2.719.279	185.132	3.104.405	3.289.537	21,0%
Unloaded	97.597	1.266.726	1.364.322	97.355	1.553.047	1.650.402	21,0%
Roll On-Roll Off	22.943	12.383	35.326	19.544	6.858	26.402	-25,3%
Lift On-Lift Off	74.654	1.254.343	1.328.997	77.811	1.546.189	1.624.000	22,2%
Loaded	89.540	1.265.417	1.354.957	87.778	1.551.358	1.639.135	21,0%
Roll On-Roll Off	25.130	12.271	37.401	20.454	6.783	27.237	-27,2%
Lift On-Lift Off	64.411	1.253.146	1.317.556	67.324	1.544.575	1.611.898	22,3%

Breakdown by navigation and operation	Monthly accumulated 2023			Monthly accumulated 2024			%
	Domestic	Foreign	Total	Domestic	Foreign	Total	
Loaded	89.417	745.839	835.256	87.660	838.374	926.034	10,9%
Full	81.421	546.627	628.048	78.679	575.322	654.001	4,1%
Empty	7.996	199.212	207.208	8.981	263.052	272.033	31,3%
Unloaded	94.360	703.850	798.209	94.184	760.752	854.935	7,1%
Full	19.939	531.793	551.731	21.155	575.333	596.487	8,1%
Empty	74.421	172.057	246.478	73.029	185.419	258.448	4,9%
Transit	3.360	1.082.454	1.085.814	3.289	1.505.280	1.508.568	38,9%
Full	38	872.483	872.521	11	1.178.218	1.178.229	35,0%
Empty	3.322	209.971	213.293	3.278	327.062	330.340	54,9%

Total traffic	187.137	2.532.142	2.719.279	185.132	3.104.405	3.289.537	21,0%
Full	101.398	1.950.903	2.052.300	99.844	2.328.873	2.428.717	18,3%
Empty	85.739	581.240	666.979	85.288	775.532	860.820	29,1%
% Empty	45,8%	23,0%	24,5%	46,1%	25,0%	26,2%	
% Transit	1,8%	42,7%	39,9%	1,8%	48,5%	45,9%	

General cargo distribution by operation (TEU)

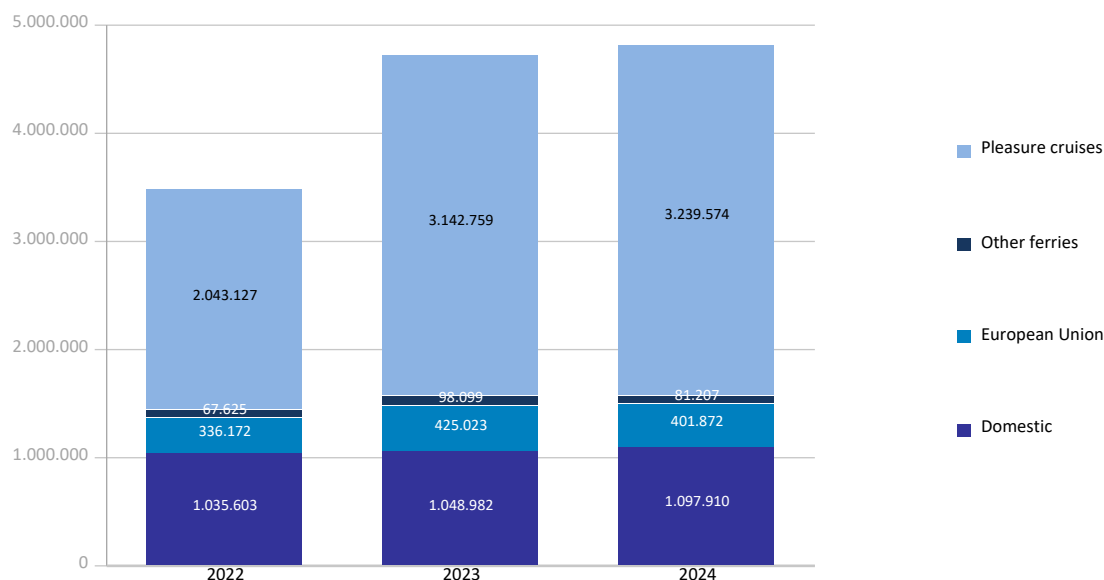


PASSENGER TRAFFIC

Total passenger traffic (units)	Monthly accumulated				% 24-23 accum. September	% 24-23 accum. August
	2023	2024	Diff. 24-23	%		
Total passengers	4.714.863	4.820.563	105.700	2,2%	4,3%	3,4%
Embarkation	1.661.183	1.726.807	65.624	4,0%	5,9%	4,5%
Disembarkation	1.613.526	1.684.954	71.428	4,4%	6,5%	5,5%
Transit	1.440.154	1.408.802	-31.352	-2,2%	-0,2%	-0,4%
Regular line ferries	1.572.104	1.580.989	8.885	0,6%	1,1%	0,8%
Embarkation	804.360	811.635	7.275	0,9%	1,4%	0,6%
Disembarkation	767.744	769.354	1.610	0,2%	0,7%	1,0%
Domestic	1.048.982	1.097.910	48.928	4,7%	5,3%	4,6%
Embarkation	544.401	572.419	28.018	5,1%	5,8%	4,8%
Disembarkation	504.581	525.491	20.910	4,1%	4,8%	4,3%
European Union	425.023	401.872	-23.151	-5,4%	-5,2%	-5,1%
Embarkation	210.380	198.695	-11.685	-5,6%	-5,2%	-5,9%
Disembarkation	214.643	203.177	-11.466	-5,3%	-5,2%	-4,4%
Other ferries	98.099	81.207	-16.892	-17,2%	-16,7%	-14,0%
Embarkation	49.579	40.521	-9.058	-18,3%	-18,1%	-17,7%
Disembarkation	48.520	40.686	-7.834	-16,1%	-15,3%	-9,4%
Pleasure cruises	3.142.759	3.239.574	96.815	3,1%	6,1%	4,9%
Embarkation	856.823	915.172	58.349	6,8%	10,5%	8,9%
Disembarkation	845.782	915.600	69.818	8,3%	12,3%	10,1%
Transit	1.440.154	1.408.802	-31.352	-2,2%	-0,2%	-0,4%

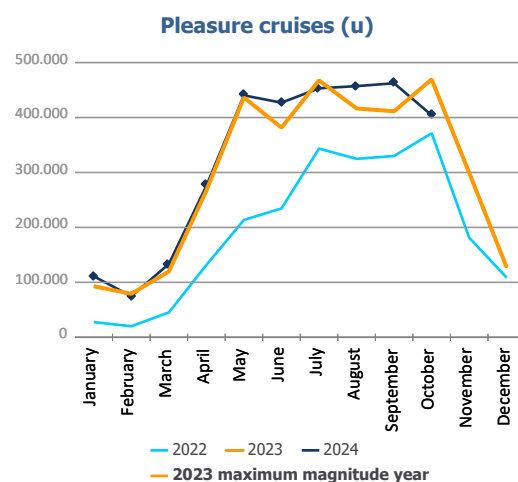
Total passenger calls (units)	Monthly accumulated				% 24-23 accum. September	% 24-23 accum. August
	2023	2024	Diff. 24-23	%		
Total number of calls	3.482	3.279	-203	-5,8%	-6,2%	-6,4%
Regular Line ferries	2.787	2.603	-184	-6,6%	-7,0%	-6,9%
Pleasure cruises	695	676	-19	-2,7%	-2,7%	-4,2%

Passenger traffic distribution (u)

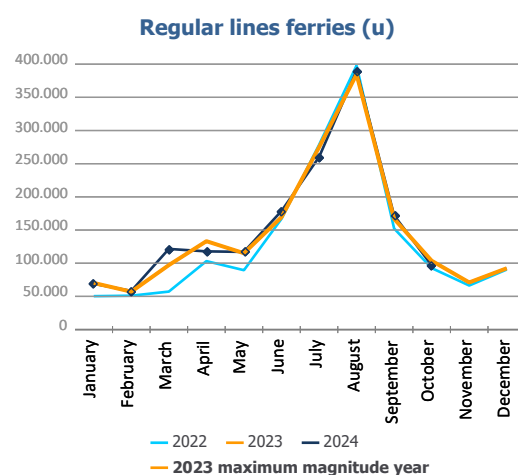


PASSENGER CLASSIFICATION

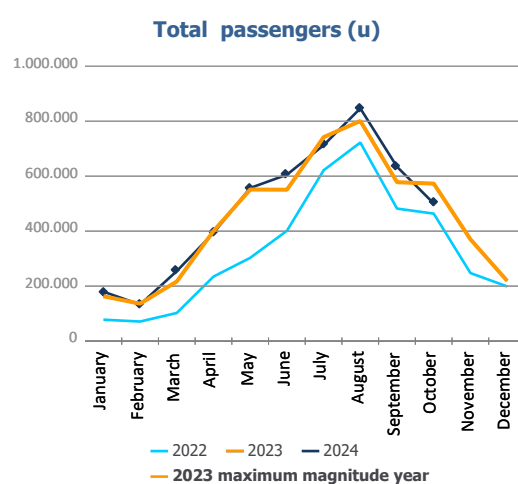
Monthly evolution of passenger traffic	Pleasure cruises			%	
	2023	2024	Diff. 24-23	Monthly	Accumulated
January	93.013	111.036	18.023	19,4%	19,4%
February	79.194	74.939	-4.255	-5,4%	8,0%
March	119.885	133.501	13.616	11,4%	9,4%
April	267.420	275.893	8.473	3,2%	6,4%
May	436.569	440.310	3.741	0,9%	4,0%
June	381.587	427.017	45.430	11,9%	6,2%
July	467.607	453.184	-14.423	-3,1%	3,8%
August	416.517	457.134	40.617	9,8%	4,9%
September	411.457	462.381	50.924	12,4%	6,1%
October	469.510	404.179	-65.331	-13,9%	3,1%
November	299.424				
December	126.942				
Total	3.569.125	3.239.574			



Monthly evolution of passenger traffic	Regular lines ferries			%	
	2023	2024	Diff. 24-23	Monthly	Accumulated
January	70.262	68.931	-1.331	-1,9%	-1,9%
February	57.059	58.232	1.173	2,1%	-0,1%
March	97.166	121.528	24.362	25,1%	10,8%
April	133.201	117.845	-15.356	-11,5%	2,5%
May	115.112	117.084	1.972	1,7%	2,3%
June	169.419	178.722	9.303	5,5%	3,1%
July	274.632	259.895	-14.737	-5,4%	0,6%
August	384.652	389.879	5.227	1,4%	0,8%
September	166.887	172.031	5.144	3,1%	1,1%
October	103.714	96.842	-6.872	-6,6%	0,6%
November	71.033				
December	92.358				
Total	1.735.495	1.580.989			



Monthly evolution of passenger traffic	Total passengers			%	
	2023	2024	Diff. 24-23	Monthly	Accumulated
January	163.275	179.967	16.692	10,2%	10,2%
February	136.253	133.171	-3.082	-2,3%	4,5%
March	217.051	255.029	37.978	17,5%	10,0%
April	400.621	393.738	-6.883	-1,7%	4,9%
May	551.681	557.394	5.713	1,0%	3,4%
June	551.006	605.739	54.733	9,9%	5,2%
July	742.239	713.079	-29.160	-3,9%	2,8%
August	801.169	847.013	45.844	5,7%	3,4%
September	578.344	634.412	56.068	9,7%	4,3%
October	573.224	501.021	-72.203	-12,6%	2,2%
November	370.457				
December	219.300				
Total	5.304.620	4.820.563			

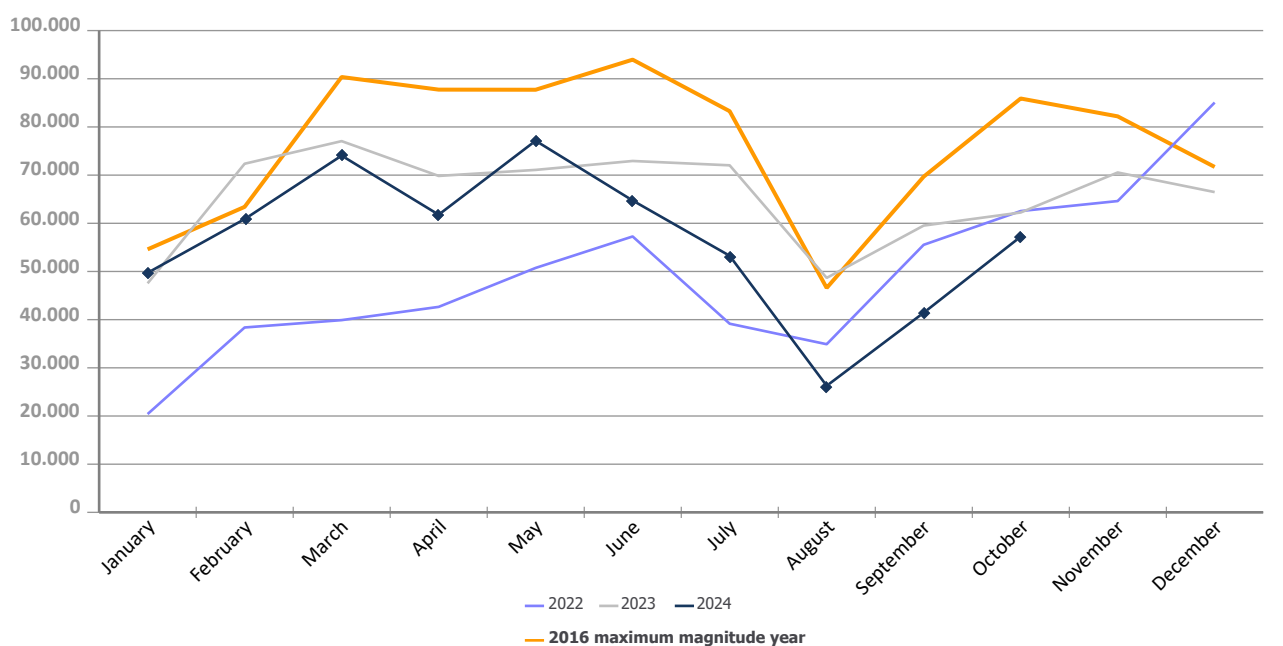


AUTOMOBILE TRAFFIC

Total automobile traffic (units)	Monthly accumulated				% 24-23 accum. September	% 24-23 accum. August
	2023	2024	Diff. 24-23	%		
Automobile traffic by navigation and operation	653.286	566.481	-86.805	-13,3%	-13,8%	-12,0%
Domestic	90.717	90.001	-716	-0,8%	-1,3%	-2,7%
Loaded	76.884	75.166	-1.718	-2,2%	-1,7%	-2,2%
Unloaded	13.727	14.762	1.035	7,5%	2,8%	-7,3%
Transit	106	73	-33	-31,1%	-31,1%	-31,1%
Foreign	562.569	476.480	-86.089	-15,3%	-15,8%	-13,5%
Loaded	268.086	279.231	11.145	4,2%	3,6%	6,2%
Unloaded	192.461	112.084	-80.377	-41,8%	-42,4%	-41,2%
Transit	102.022	85.165	-16.857	-16,5%	-16,6%	-11,5%

Monthly automobile traffic (u)	Monthly		Accumulated		%	
	2023	2024	2023	2024	Monthly	Accumulated
January	47.534	49.721	47.534	49.721	4,6%	4,6%
February	72.364	60.872	119.898	110.593	-15,9%	-7,8%
March	77.057	74.044	196.955	184.637	-3,9%	-6,3%
April	69.834	61.791	266.789	246.428	-11,5%	-7,6%
May	71.083	77.134	337.872	323.562	8,5%	-4,2%
June	72.935	64.728	410.807	388.290	-11,3%	-5,5%
July	72.037	53.260	482.844	441.550	-26,1%	-8,6%
August	48.671	26.273	531.515	467.823	-46,0%	-12,0%
September	59.527	41.432	591.042	509.255	-30,4%	-13,8%
October	62.244	57.226	653.286	566.481	-8,1%	-13,3%
November	70.552		723.838			
December	66.480		790.318			

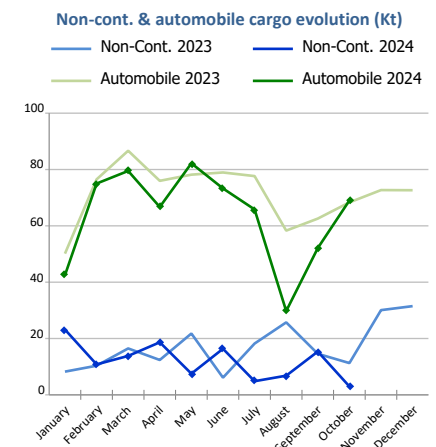
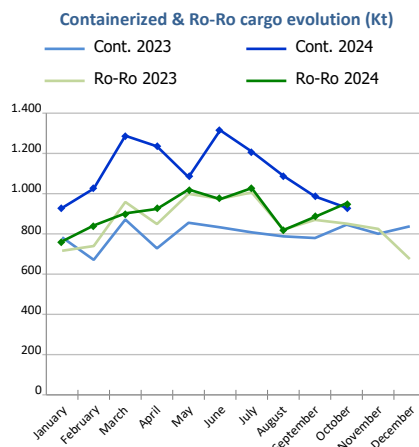
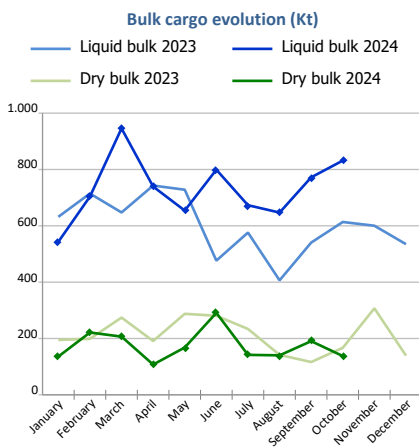
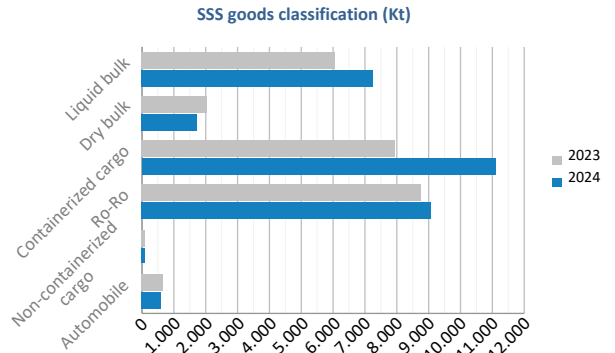
Evolution of monthly automobile traffic (u)



SHORT SEA SHIPPING (SSS)

SSS Goods classification

Goods classification. Tonnes	Monthly accumulated		%	% of total port traffic
	2023	2024		
Liquid bulk	6.077.839	7.309.179	20,3%	62,1%
Dry bulk	2.086.239	1.740.115	-16,6%	45,4%
Containerized cargo	7.961.287	11.087.650	39,3%	35,1%
Ro-Ro	8.784.511	9.107.142	3,7%	99,8%
Non-containerized cargo	145.100	120.319	-17,1%	29,7%
Automobile	713.268	635.887	-10,8%	76,3%
Total	25.768.242	30.000.290	16,4%	52,1%



SSS General Cargo	Spanish Islands			SSS Remainder			TOTAL		
	2023	2024	%	2023	2024	%	2023	2024	%
Containerized cargo	753.496	799.234	6,1%	7.207.790	10.288.416	42,7%	7.961.287	11.087.650	39,3%
O/D	733.747	768.129	4,7%	2.687.814	3.211.870	19,5%	3.421.561	3.979.999	16,3%
Transit	19.749	31.105	57,5%	4.519.977	7.076.546	56,6%	4.539.726	7.107.651	56,6%
Ro-Ro	5.021.358	5.188.450	3,3%	3.763.152	3.918.692	4,1%	8.784.511	9.107.142	3,7%
O/D	5.021.358	5.188.396	3,3%	3.557.397	3.588.043	0,9%	8.578.755	8.776.439	2,3%
Transit	0	54		205.756	330.649	60,7%	205.756	330.703	60,7%
Non-cont. cargo	1.762	1.148	-34,9%	143.338	119.171	-16,9%	145.100	120.319	-17,1%
O/D	1.762	1.148	-34,9%	138.977	116.601	-16,1%	140.739	117.748	-16,3%
Transit	0	0		4.360	2.570	-41,1%	4.361	2.570	-41,1%
Automobile	139.895	138.633	-0,9%	573.373	497.254	-13,3%	713.268	635.887	-10,8%
O/D	139.510	138.581	-0,7%	467.636	410.571	-12,2%	607.146	549.152	-9,6%
Transit	385	52	-86,5%	105.737	86.683	-18,0%	106.122	86.735	-18,3%



Short Sea Shipping (SSS):

The transport of cargo/goods and passengers between ports situated in the European Union or between these ports and non-European ports with a coastline in seas bordering Europe. This applies to cargo either originating from or is destined for these countries (in accordance with the European Shortsea Network).

Motorways of the sea (MoS):

Short Sea Shipping services as an alternative to road transport and which fulfill the following criteria: minimum frequency of 3 calls per week and calling at a maximum of 3 different ports.

General cargo:

Including containerized cargo, non-containerized cargo, Ro-Ro and automobiles.

Containerized cargo:

Excluding container cargo by Ro-Ro.

Non-containerized cargo:

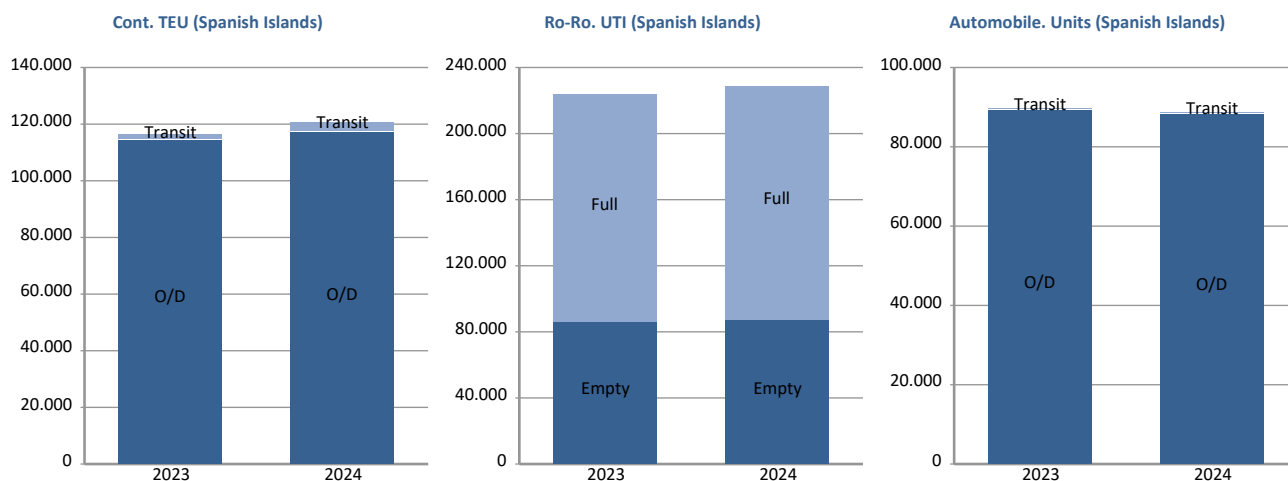
General non-containerized goods other than Ro-Ro and excluding automobiles.

Ro-Ro:

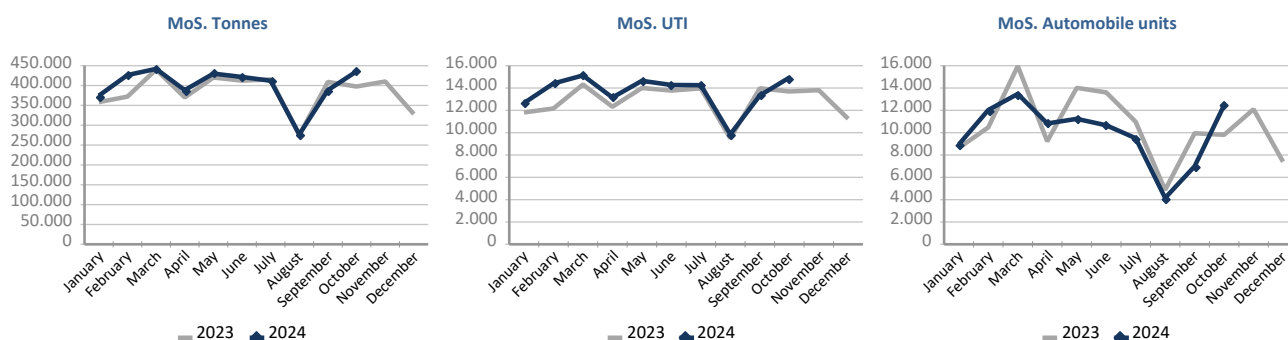
General cargo carried in UTI's. Excluding automobiles.

SHORT SEA SHIPPING (SSS)

SSS General cargo	Spanish Islands			SSS Remainder			TOTAL		
	2023	2024	%	2023	2024	%	2023	2024	%
Containerized cargo. TEU	116.126	120.954	4,2%	689.064	1.003.541	45,6%	805.189	1.124.495	39,7%
O/D	114.237	116.849	2,3%	326.960	385.235	17,8%	441.197	502.084	13,8%
Full	70.979	75.080	5,8%	191.580	222.827	16,3%	262.559	297.907	13,5%
Empty	43.259	41.769	-3,4%	135.380	162.409	20,0%	178.639	204.178	14,3%
Transit	1.889	4.105	117,4%	362.104	618.306	70,8%	363.992	622.411	71,0%
Full	1.657	2.796	68,8%	327.862	546.069	66,6%	329.518	548.865	66,6%
Empty	232	1.309	464,2%	34.242	72.237	111,0%	34.474	73.546	113,3%
Ro-Ro. UTI	224.074	228.483	2,0%	131.187	138.738	5,8%	355.261	367.221	3,4%
Full	138.702	141.944	2,3%	118.238	123.699	4,6%	256.940	265.643	3,4%
Empty	85.372	86.539	1,4%	12.949	15.039	16,1%	98.321	101.578	3,3%
Automobile units	89.616	88.332	-1,4%	395.146	358.695	-9,2%	484.762	447.027	-7,8%
O/D	89.333	88.294	-1,2%	326.172	297.673	-8,7%	415.505	385.967	-7,1%
Transit	283	38	-86,6%	68.974	61.022	-11,5%	69.257	61.060	-11,8%



Motorways of the Sea (MoS)	EU			Non-EU			TOTAL		
	2023	2024	%	2023	2024	%	2023	2024	%
Tonnes	3.854.196	3.987.619	3,5%	16.180	8.280	-48,8%	3.870.376	3.995.898	3,2%
Loaded	2.050.820	2.135.999	4,2%	10.983	6.635	-39,6%	2.061.803	2.142.634	3,9%
Unloaded	1.803.376	1.851.620	2,7%	5.197	1.645	-68,4%	1.808.574	1.853.264	2,5%
UTI	128.751	136.240	5,8%	772	384	-50,3%	129.523	136.624	5,5%
Loaded	65.367	69.722	6,7%	528	295	-44,1%	65.895	70.017	6,3%
Unloaded	63.384	66.518	4,9%	244	89	-63,5%	63.628	66.607	4,7%
Automobile units	106.210	98.912	-6,9%	1.322	1.368	3,5%	107.532	100.280	-6,7%
Loaded	99.453	94.371	-5,1%	1.317	1.362	3,4%	100.770	95.733	-5,0%
Unloaded	6.757	4.541	-32,8%	5	6	20,0%	6.762	4.547	-32,8%

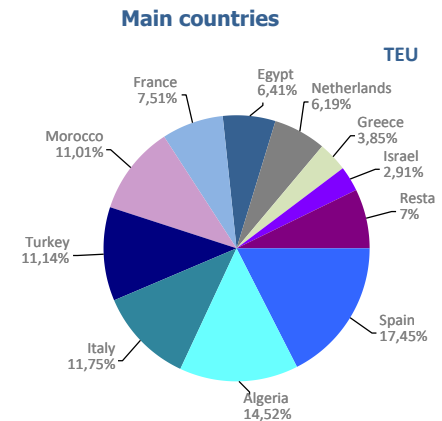


UTI: All those means of unitization, self-propelled or otherwise, that are directly or indirectly used as a means of land transport (e.g. trailers, platforms, trucks, freezer trucks, etc.) are considered as UTI. Containers are not considered to be included, except those that are handled by an equipment transport of the own terminal.

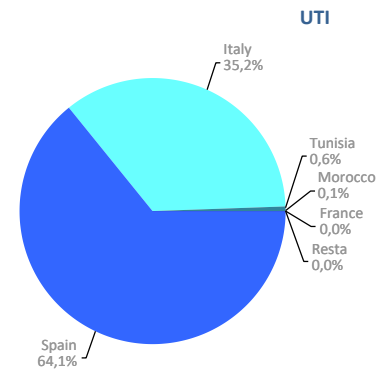
SHORT SEA SHIPPING (SSS)

SSS Ranking countries by mode of packaging

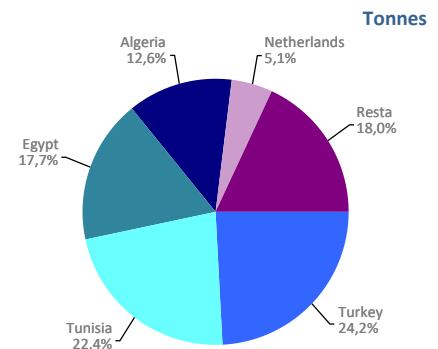
Containerized cargo. TEU	Monthly accumulated				% of total 2024
	2023	2024	Diff. 24-23	%	
Total	805.189	1.124.495	319.306	39,7%	100%
Spain	168.540	196.248	27.709	16,4%	17,5%
Algeria	164.654	163.276	-1.379	-0,8%	14,5%
Italy	56.298	132.178	75.880	134,8%	11,8%
Turkey	105.412	125.274	19.863	18,8%	11,1%
Morocco	94.073	123.794	29.721	31,6%	11,0%
France	53.149	84.430	31.281	58,9%	7,5%
Egypt	52.678	72.078	19.400	36,8%	6,4%
Netherlands	1.264	69.636	68.373	5411,4%	6,2%
Greece	26.406	43.240	16.835	63,8%	3,8%
Israel	21.278	32.677	11.399	53,6%	2,9%
Remainder	61.441	81.667	20.226	32,9%	7,3%



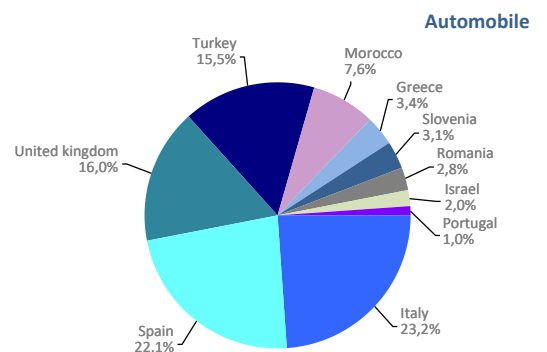
Ro-Ro. UTI	Monthly accumulated				% of total 2024
	2023	2024	Diff. 24-23	%	
Total	355.261	367.221	11.961	3,4%	100%
Spain	228.775	235.496	6.721	2,9%	64,1%
Italy	124.029	129.220	5.191	4,2%	35,2%
Tunisia	1.614	2.090	477	29,5%	0,6%
Morocco	829	398	-431	-52,0%	0,1%
France	0	13	13	0,0%	0,0%
Remainder	14	4	-10	-71,4%	0,0%



Non-cont. cargo. Tonnes	Monthly accumulated				% of total 2024
	2023	2024	Diff. 24-23	%	
Total	145.100	120.319	-24.781	-17,1%	100%
Turkey	4.365	29.173	24.808	568,3%	24,2%
Tunisia	7.367	26.904	19.537	265,2%	22,4%
Egypt	55.994	21.278	-34.715	-62,0%	17,7%
Algeria	14.394	15.190	796	5,5%	12,6%
Netherlands	0	6.152	6.152	0,0%	5,1%
Remainder	62.980	21.621	-41.359	-65,7%	18,0%



Automobile. Units	Monthly accumulated				% of total 2024
	2023	2024	Diff. 24-23	%	
Total	484.762	447.027	-37.735	-7,8%	100%
Italy	114.573	103.618	-10.955	-9,6%	23,2%
Spain	100.381	98.949	-1.432	-1,4%	22,1%
United kingdom	73.607	71.479	-2.128	-2,9%	16,0%
Turkey	55.323	69.182	13.859	25,1%	15,5%
Morocco	33.335	34.137	802	2,4%	7,6%
Greece	17.696	15.286	-2.410	-13,6%	3,4%
Slovenia	5.537	14.010	8.473	153,0%	3,1%
Romania	14.507	12.595	-1.912	-13,2%	2,8%
Israel	12.093	8.838	-3.255	-26,9%	2,0%
Portugal	4.572	4.253	-319	-7,0%	1,0%
Remainder	53.138	14.680	-38.458	-72,4%	3,3%



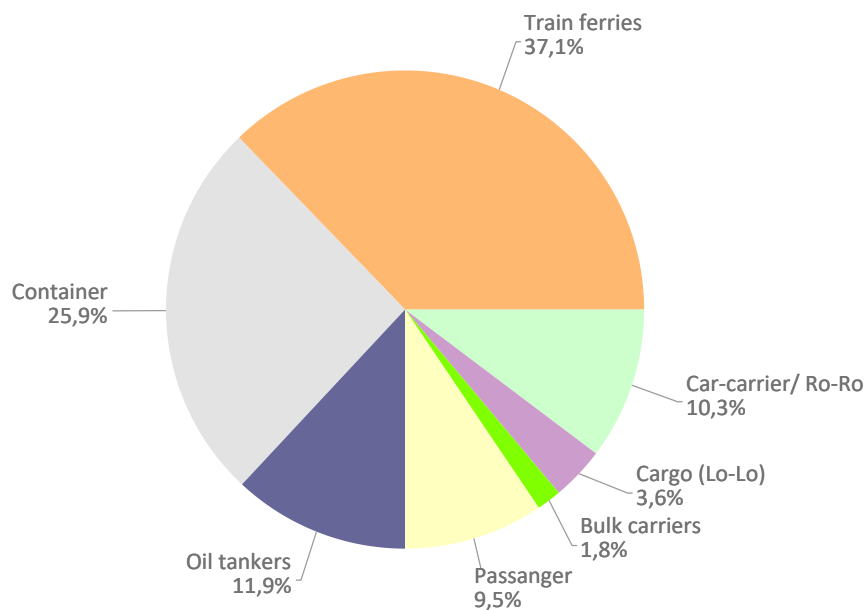
VESSELS TRAFFIC

Vessels traffic	Monthly accumulated		
	2023	2024	%
Number of calls	7.406	7.110	-4,0%
Tonnage	317.253.657	310.538.857	-2,1%
Average tonnes	42.837	43.676	2,0%

Type of vessels	Monthly accumulated					
	2023		2024		%	
	Calls	GT	Calls	GT	Calls	GT
Total	7.406	317.253.657	7.110	310.538.857	-4,0%	-2,1%
Car-carrier/ Ro-Ro	760	40.332.994	729	38.116.234	-4,1%	-5,5%
Cargo (Lo-Lo)	304	1.837.933	254	2.276.269	-16,4%	23,8%
Bulk carriers	126	3.576.944	126	3.668.712	0,0%	2,6%
Passanger	695	86.145.774	676	83.566.490	-2,7%	-3,0%
Oil tankers	818	16.075.739	844	15.047.085	3,2%	-6,4%
Container	1.866	84.870.442	1.842	90.049.303	-1,3%	6,1%
Train ferries	2.837	84.413.831	2.639	77.814.764	-7,0%	-7,8%

Type of vessels (monthly accumulated 2024)	Domestic		Foreign	
	Calls	GT	Calls	GT
Total	2.632	64.400.540	4.478	246.138.317
Car-carrier/ Ro-Ro	49	1.019.266	680	37.096.968
Cargo (Lo-Lo)	26	139.434	228	2.136.835
Bulk carriers	9	161.437	117	3.507.275
Passanger	98	7.132.661	578	76.433.829
Oil tankers	87	978.112	757	14.068.973
Container	283	3.650.792	1.559	86.398.511
Train ferries	2.080	51.318.838	559	26.495.926

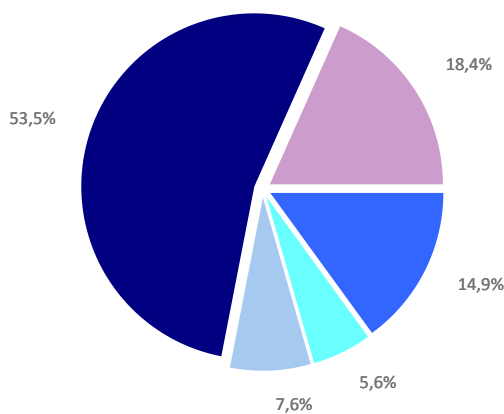
Distribution by type of vessel



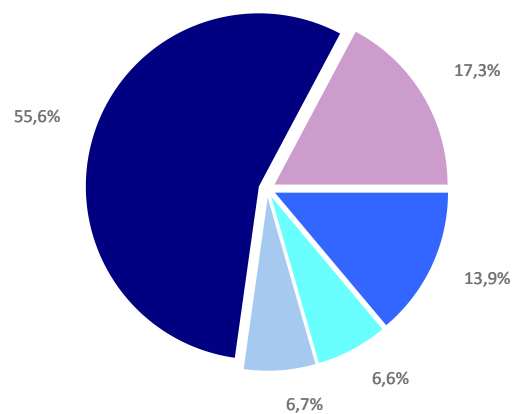
GOODS TRAFFIC

Type of packaging and navigation	Monthly accumulated 2023			Monthly accumulated 2024			%
	Domestic	Foreign	Total	Domestic	Foreign	Total	
Hydrocarbons	622.482	7.126.778	7.749.260	583.187	7.394.129	7.977.316	2,9%
Incoming	470.787	5.994.524	6.465.311	342.992	5.802.542	6.145.534	-4,9%
Outgoing	151.695	1.132.255	1.283.949	240.195	1.591.587	1.831.781	42,7%
Other liquid bulk	131.153	2.776.563	2.907.715	445.897	3.347.580	3.793.478	30,5%
Incoming	77.090	1.827.115	1.904.205	367.353	2.263.897	2.631.250	38,2%
Outgoing	54.063	949.448	1.003.511	78.544	1.083.683	1.162.227	15,8%
Dry bulk	113.108	3.826.668	3.939.776	68.422	3.766.386	3.834.808	-2,7%
Incoming	91.010	2.102.258	2.193.269	63.157	2.237.394	2.300.552	4,9%
Outgoing	22.098	1.724.410	1.746.508	5.265	1.528.992	1.534.257	-12,2%
Containerized cargo	1.179.667	26.608.795	27.788.462	1.146.108	30.850.428	31.996.536	15,1%
Incoming	350.681	12.775.197	13.125.878	349.828	14.935.214	15.285.042	16,4%
Outgoing	828.986	13.833.598	14.662.584	796.280	15.915.214	16.711.494	14,0%
Non-containerized cargo	4.811.291	4.717.757	9.529.048	5.037.815	4.905.530	9.943.345	4,3%
Incoming	1.577.543	2.386.491	3.964.033	1.653.191	2.460.141	4.113.332	3,8%
Outgoing	3.233.749	2.331.266	5.565.015	3.384.624	2.445.388	5.830.013	4,8%
Total general cargo	5.990.958	31.326.552	37.317.510	6.183.924	35.755.957	41.939.881	12,4%
Incoming	1.928.223	15.161.688	17.089.911	2.003.019	17.395.355	19.398.374	13,5%
Outgoing	4.062.735	16.164.864	20.227.599	4.180.905	18.360.602	22.541.507	11,4%
Total throughput (tonnes)	6.857.701	45.056.561	51.914.262	7.281.430	50.264.052	57.545.482	10,8%
Incoming	2.567.111	25.085.585	27.652.696	2.776.522	27.699.189	30.475.710	10,2%
Outgoing	4.290.591	19.970.976	24.261.566	4.504.909	22.564.863	27.069.772	11,6%
Container traffic (TEU)	187.137	2.532.142	2.719.279	185.132	3.104.405	3.289.537	21,0%
Incoming	97.597	1.266.726	1.364.322	97.355	1.553.047	1.650.402	21,0%
Outgoing	89.540	1.265.417	1.354.957	87.778	1.551.358	1.639.135	21,0%

Distribution by type of packaging 2023

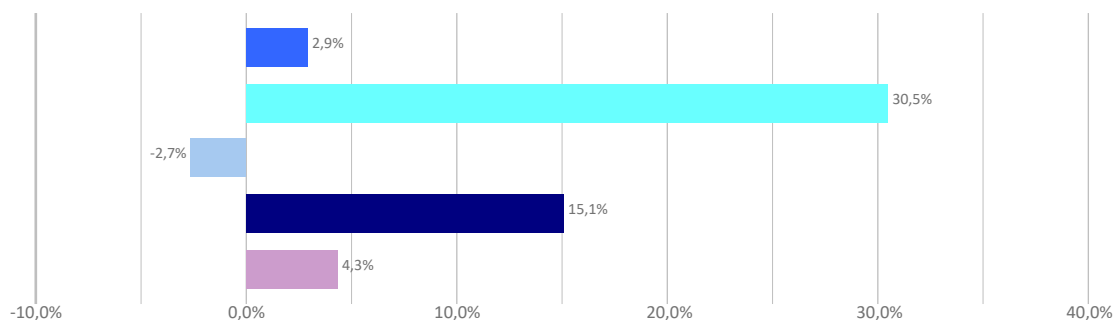


Distribution by type of packaging 2024



■ Hydrocarbons ■ Liquid bulk ■ Dry bulk ■ Containerized cargo ■ Non Containerized cargo

Annual growth by type of packaging



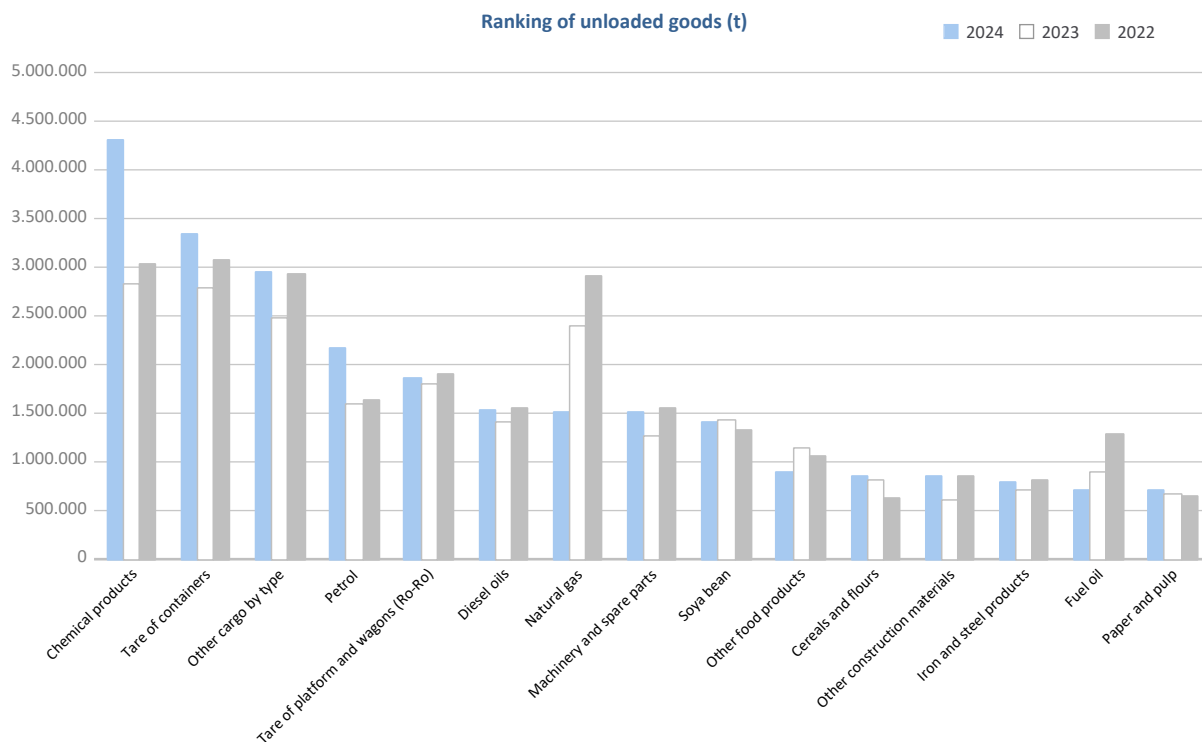
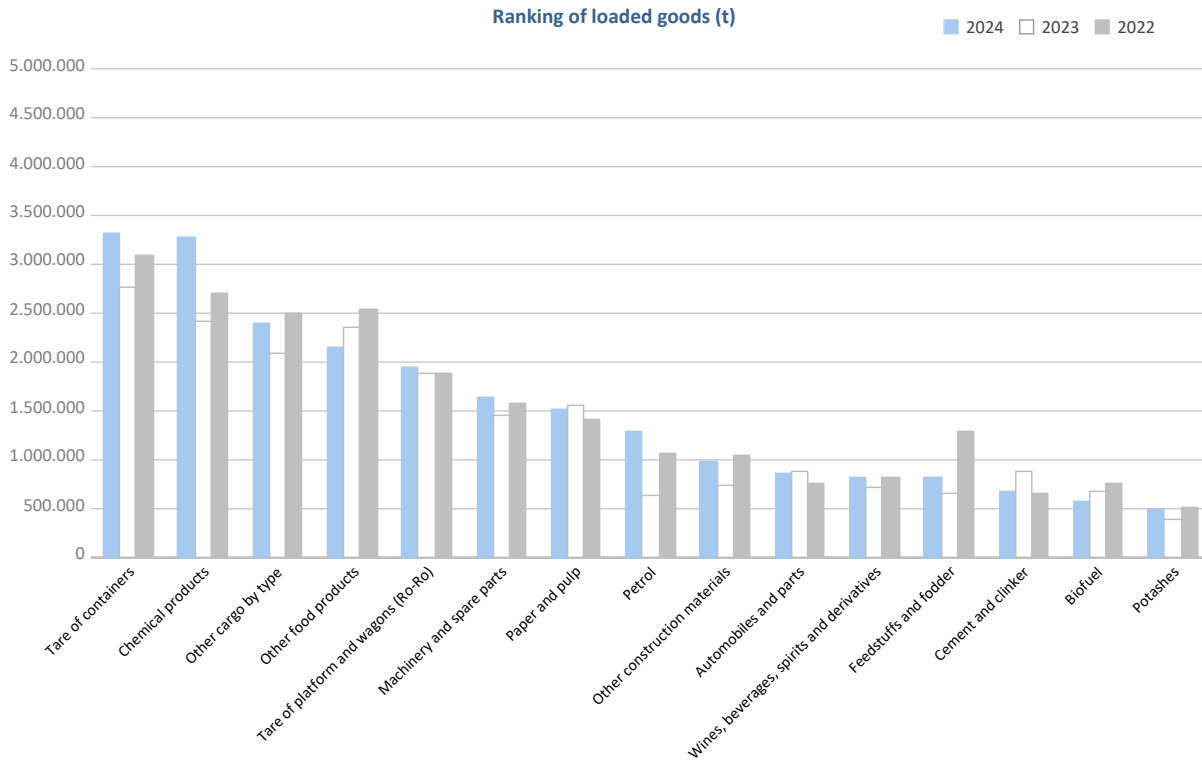
GOODS TRAFFIC

Goods by classification 4.3.7.	Monthly accumulated				% of total accum. 2024
	2023	2024	Diff. 24-23	%	
Tonnes	51.914.262	57.545.482	5.631.220	10,8%	100%
Energy	9.218.187	9.202.819	-15.368	-0,2%	16,0%
Crude oil	33	963	929	2785,6%	0,0%
Fuel oil	1.026.959	802.521	-224.437	-21,9%	1,4%
Diesel oils	1.714.398	1.879.384	164.986	9,6%	3,3%
Petrol	2.234.039	3.470.084	1.236.045	55,3%	6,0%
Other petroleum products	215.821	280.129	64.308	29,8%	0,5%
Petroleum fuel gasses	48.279	57.715	9.436	19,5%	0,1%
Coal	55.950	50.584	-5.366	-9,6%	0,1%
Natural gas	2.631.015	1.625.995	-1.005.020	-38,2%	2,8%
Biofuel	1.291.693	1.035.444	-256.249	-19,8%	1,8%
Iron, steel and metallurgical products	2.282.278	2.448.026	165.748	7,3%	4,3%
Iron ore	3.477	8.980	5.503	158,3%	0,0%
Other minerals and metallic waste	330.668	509.150	178.482	54,0%	0,9%
Scrap iron	452.349	335.777	-116.572	-25,8%	0,6%
Iron and steel products	1.073.347	1.169.948	96.601	9,0%	2,0%
Other metallurgical products	422.437	424.172	1.734	0,4%	0,7%
Non-metallic minerals	861.889	902.960	41.071	4,8%	1,6%
Common salt	504.208	460.468	-43.740	-8,7%	0,8%
Other non-metallic minerals	357.681	442.492	84.811	23,7%	0,8%
Fertilizers	587.853	736.663	148.810	25,3%	1,3%
Phosphates	107	156	49	46,2%	0,0%
Potashes	407.458	511.838	104.380	25,6%	0,9%
Natural/artificial fertilizer	180.288	224.668	44.380	24,6%	0,4%
Chemicals	5.243.877	7.575.441	2.331.564	44,5%	13,2%
Chemical products	5.243.877	7.575.441	2.331.564	44,5%	13,2%
Construction materials	2.259.712	2.558.645	298.933	13,2%	4,4%
Asphalt	6.973	9.482	2.509	36,0%	0,0%
Cement and clinker	915.498	714.002	-201.496	-22,0%	1,2%
Other construction materials	1.337.241	1.835.161	497.920	37,2%	3,2%
Agriculture, livestock and food	10.674.157	10.920.001	245.843	2,3%	19,0%
Cereals and flours	928.867	1.065.458	136.591	14,7%	1,9%
Soya bean	1.614.961	1.471.674	-143.287	-8,9%	2,6%
Fruits, vegetables, pulses	444.196	481.413	37.217	8,4%	0,8%
Wines, beverages, spirits and derivatives	827.057	1.040.220	213.164	25,8%	1,8%
Canned goods	282.710	272.269	-10.442	-3,7%	0,5%
Tobacco, coffee, cocoa	663.458	847.773	184.315	27,8%	1,5%
Oils and fats	1.040.453	1.107.355	66.901	6,4%	1,9%
Other food products	3.509.035	3.045.358	-463.678	-13,2%	5,3%
Frozen fish	576.853	562.353	-14.501	-2,5%	1,0%
Feedstuffs and fodder	786.566	1.026.128	239.562	30,5%	1,8%
Other cargo	9.853.545	11.163.592	1.310.046	13,3%	19,4%
Timber	370.634	430.839	60.205	16,2%	0,7%
Paper and pulp	2.225.318	2.217.784	-7.534	-0,3%	3,9%
Machinery and spare parts	2.706.015	3.157.674	451.659	16,7%	5,5%
Other cargo by type	4.551.578	5.357.296	805.717	17,7%	9,3%
Vehicles and transport parts	10.932.763	12.037.335	1.104.572	10,1%	20,9%
Automobiles and parts	1.684.956	1.570.860	-114.096	-6,8%	2,7%
Tare of platform and wagons (Ro-Ro)	3.689.532	3.802.862	113.330	3,1%	6,6%
Tare of containers	5.558.276	6.663.613	1.105.337	19,9%	11,6%

GOODS TRAFFIC

Goods by classification 4.3.7.

Ranking of goods (tonnes)

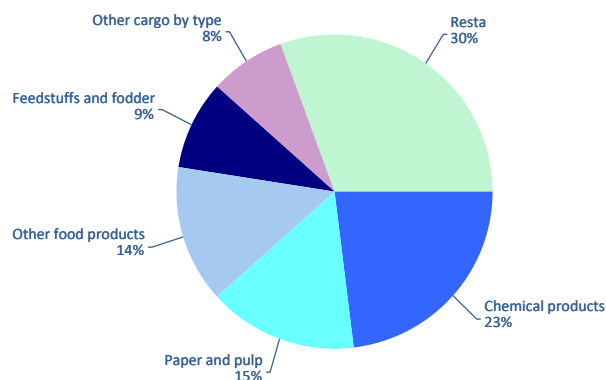


GOODS TRAFFIC

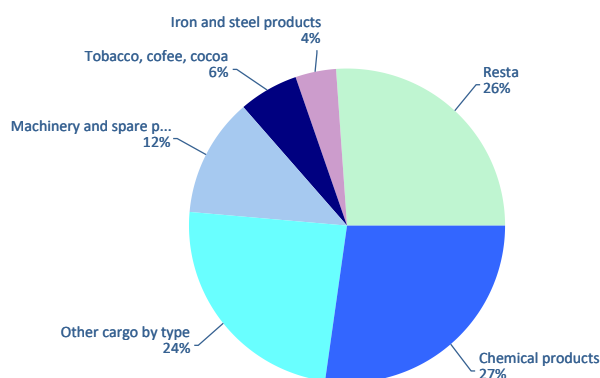
Containerized goods by classification 4.3.7. (Tares & transits not included)

Containerized goods classification	Loaded			Unloaded			Total monthly accumulated		
	2023	2024	%	2023	2024	%	2023	2024	%
Total tonnes (tares & transits not included)	6.518.791	6.859.087	5,2%	4.929.539	5.347.478	8,5%	11.448.330	12.206.565	6,6%
Chemical products	1.301.149	1.579.784	21,4%	1.272.243	1.455.794	14,4%	2.573.393	3.035.578	18,0%
Other cargo by type	539.726	547.647	1,5%	1.151.391	1.293.941	12,4%	1.691.116	1.841.588	8,9%
Paper and pulp	1.105.911	1.045.952	-5,4%	145.134	202.284	39,4%	1.251.046	1.248.236	-0,2%
Other food products	982.957	968.834	-1,4%	88.210	52.029	-41,0%	1.071.167	1.020.863	-4,7%
Machinery and spare parts	386.585	373.757	-3,3%	641.160	646.486	0,8%	1.027.745	1.020.243	-0,7%
Feedstuffs and fodder	520.280	630.114	21,1%	45.534	82.742	81,7%	565.814	712.856	26,0%
Other construction materials	217.905	246.148	13,0%	188.096	193.605	2,9%	406.001	439.753	8,3%
Tobacco, coffee, cocoa	66.300	67.874	2,4%	279.991	327.465	17,0%	346.290	395.339	14,2%
Wines, beverages, spirits and derivatives	344.953	347.540	0,7%	32.383	37.440	15,6%	377.336	384.980	2,0%
Iron and steel products	142.020	134.317	-5,4%	226.677	227.045	0,2%	368.697	361.362	-2,0%
Automobiles and parts	113.126	107.524	-5,0%	178.051	209.910	17,9%	291.177	317.434	9,0%
Other minerals and metallic waste	149.634	179.491	20,0%	22.985	24.714	7,5%	172.619	204.205	18,3%
Other metallurgical products	75.321	67.190	-10,8%	139.231	129.154	-7,2%	214.552	196.343	-8,5%
Other non-metallic minerals	94.366	79.259	-16,0%	74.600	75.825	1,6%	168.966	155.084	-8,2%
Oils and fats	114.830	106.118	-7,6%	36.415	30.731	-15,6%	151.245	136.849	-9,5%
Canned goods	59.427	55.632	-6,4%	83.343	70.435	-15,5%	142.770	126.067	-11,7%
Fruits, vegetables, pulses	30.710	28.111	-8,5%	117.835	95.141	-19,3%	148.545	123.252	-17,0%
Biofuel	80.886	90.086	11,4%	23.078	25.003	8,3%	103.964	115.090	10,7%
Cereals and flours	46.607	45.635	-2,1%	25.881	27.384	5,8%	72.487	73.019	0,7%
Natural/artificial fertilizer	35.371	39.883	12,8%	45.693	17.670	-61,3%	81.064	57.552	-29,0%
Scrap iron	22.104	22.390	1,3%	18.311	23.149	26,4%	40.415	45.539	12,7%
Frozen fish	5.383	1.706	-68,3%	32.325	38.353	18,6%	37.708	40.059	6,2%
Timber	9.900	10.408	5,1%	19.271	20.998	9,0%	29.171	31.406	7,7%
Other petroleum products	15.930	19.525	22,6%	12.328	11.337	-8,0%	28.259	30.862	9,2%
Common salt	25.058	25.422	1,5%	1.971	2.167	10,0%	27.028	27.589	2,1%
Coal	1.781	1.789	0,4%	20.873	15.533	-25,6%	22.654	17.322	-23,5%
Petroleum fuel gasses	6.836	13.787	101,7%	872	394	-54,9%	7.708	14.181	84,0%
Fuel oil	5.935	6.437	8,5%	3.283	5.449	66,0%	9.218	11.885	28,9%
Cement and clinker	11.603	9.686	-16,5%	56	28	-49,1%	11.659	9.714	-16,7%
Asphalt	5.325	6.350	19,3%	16	20	24,4%	5.341	6.370	19,3%
Soya bean	3	7	127,2%	509	3.474	582,6%	512	3.481	579,8%
Potashes	139	234	69,1%	1.387	1.561	12,6%	1.525	1.795	17,7%
Crude oil	11	28	143,1%	22	192	772,4%	33	220	558,1%
Diesel oils	560	155	-72,4%	0	0		561	155	-72,4%
Phosphates	107	111	4,2%	0	0		107	111	4,2%
Iron ore	25	101	311,3%	367	4	-98,9%	391	105	-73,2%
Petrol	28	54	88,5%	16	22	39,0%	44	76	70,7%
Natural gas	2	0		0	0		2	0	

Distribution of main goods Loaded 2024



Distribution of main goods Unloaded 2024



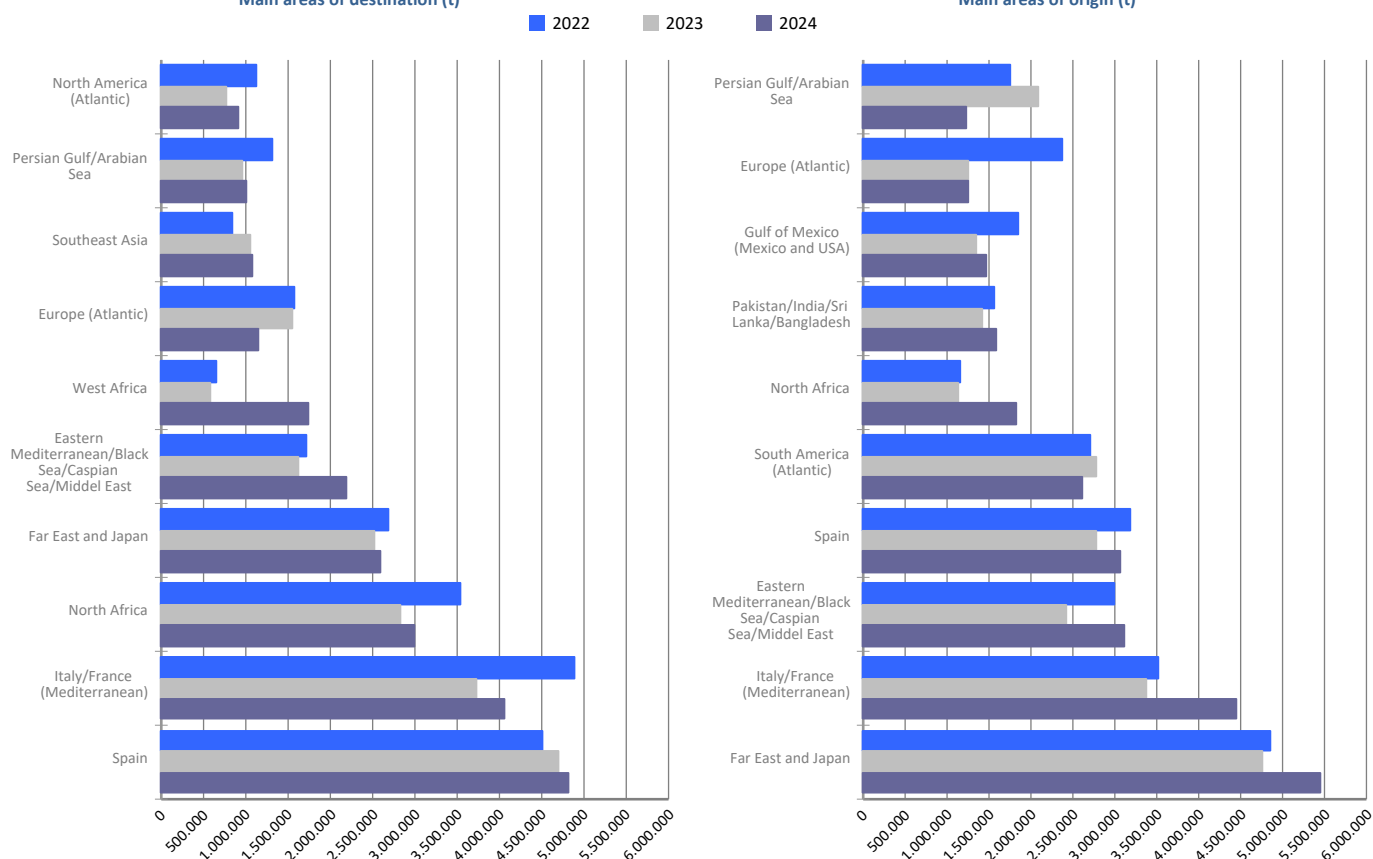
MARITIME TRAFFIC BY ORIGIN/DESTINATION

Geographical areas. Tonnes

Geographical areas	Monthly accumulated				% of total accum. 2024
	2023	2024	Diff. 24-23	%	
Tonnes	51.914.262	57.545.482	5.631.220	10,8%	100%
Italy/France (Mediterranean)	7.127.086	8.496.836	1.369.750	19,2%	14,8%
Far East and Japan	7.281.423	8.056.397	774.974	10,6%	14,0%
Spain	7.471.123	7.891.950	420.826	5,6%	13,7%
Eastern Mediterranean/Black Sea/Caspian Sea/Middel	4.041.926	5.318.539	1.276.613	31,6%	9,2%
North Africa	3.971.969	4.815.254	843.285	21,2%	8,4%
South America (Atlantic)	3.198.287	3.148.647	-49.640	-1,6%	5,5%
Europe (Atlantic)	2.807.440	2.407.162	-400.278	-14,3%	4,2%
Pakistan/India/Sri Lanka/Bangladesh	2.132.849	2.333.580	200.732	9,4%	4,1%
West Africa	1.187.134	2.317.466	1.130.332	95,2%	4,0%
Southeast Asia	2.090.214	2.276.598	186.384	8,9%	4,0%
Persian Gulf/Arabian Sea	3.034.670	2.248.429	-786.241	-25,9%	3,9%
Gulf of Mexico (Mexico and USA)	2.058.087	2.192.805	134.718	6,5%	3,8%
North America (Atlantic)	1.167.096	1.414.240	247.144	21,2%	2,5%
Red Sea	745.559	1.318.535	572.976	76,9%	2,3%
Central America and Caribbean	980.618	959.656	-20.962	-2,1%	1,7%
Unknown area (Tare of empty containers)	442.365	608.314	165.949	37,5%	1,1%
South-Eastern Africa/Indian Ocean	432.260	504.306	72.046	16,7%	0,9%
South America (Pacific)	494.635	475.975	-18.660	-3,8%	0,8%
Canada (Atlantic) and Great Lakes	979.584	383.467	-596.116	-60,9%	0,7%
Australia, New Zealand/Pacific Islands	175.980	202.572	26.592	15,1%	0,4%
North America (Pacific)	93.957	174.754	80.798	86,0%	0,3%

Main areas of destination (t)

Main areas of origin (t)

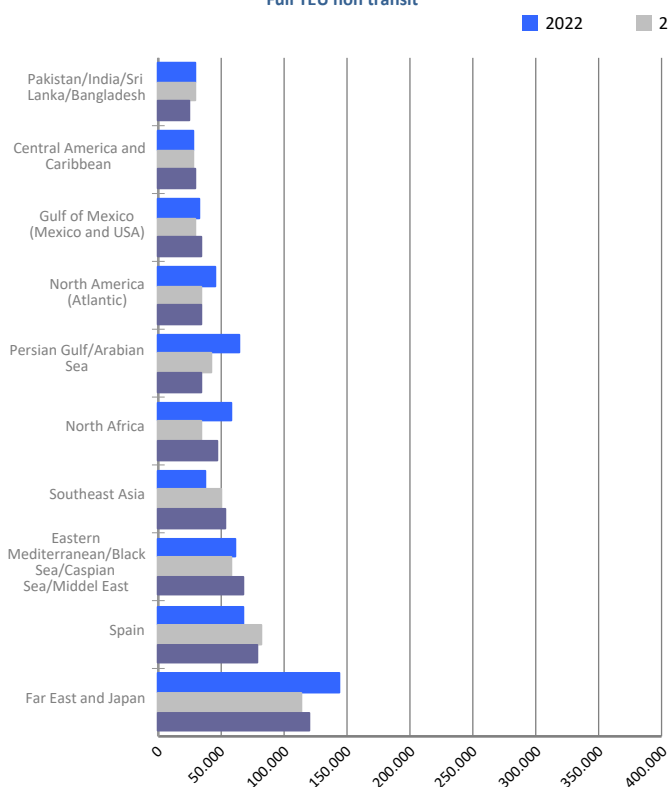


MARITIME TRAFFIC BY ORIGIN/DESTINATION

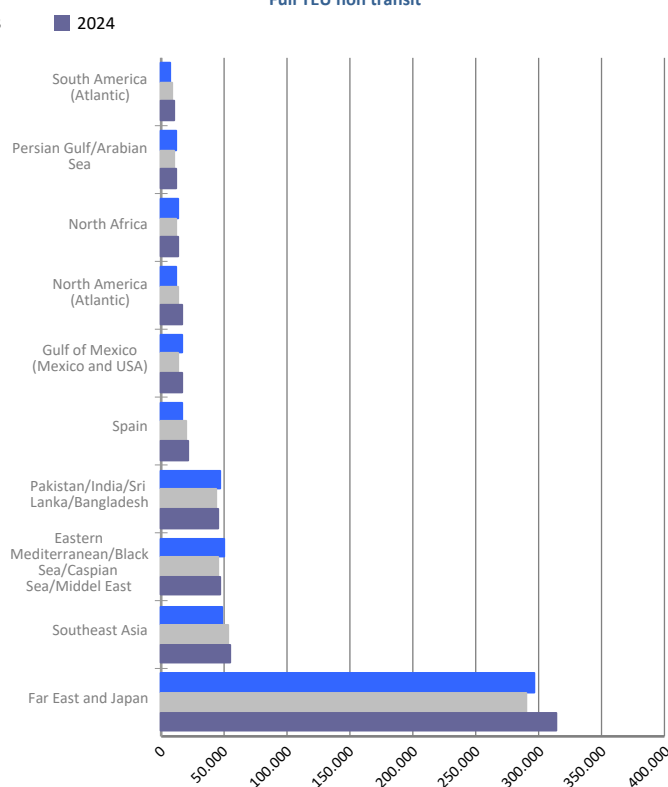
Geographical areas. Full TEU non transit

Geographical areas	Monthly accumulated				% of total accum. 2024
	2023	2024	Diff. 24-23	%	
Full TEU non transit	1.179.779	1.250.488	70.709	6,0%	100%
Far East and Japan	403.574	435.552	31.978	7,9%	34,8%
Eastern Mediterranean/Black Sea/Caspian Sea/Middel	103.072	115.307	12.235	11,9%	9,2%
Southeast Asia	103.428	108.557	5.129	5,0%	8,7%
Spain	101.445	100.295	-1.150	-1,1%	8,0%
Pakistan/India/Sri Lanka/Bangladesh	72.881	69.483	-3.399	-4,7%	5,6%
North Africa	47.417	61.134	13.717	28,9%	4,9%
North America (Atlantic)	46.890	51.288	4.398	9,4%	4,1%
Gulf of Mexico (Mexico and USA)	43.666	51.004	7.338	16,8%	4,1%
Persian Gulf/Arabian Sea	52.142	46.795	-5.347	-10,3%	3,7%
Central America and Caribbean	34.000	35.057	1.057	3,1%	2,8%
South America (Atlantic)	29.181	31.058	1.878	6,4%	2,5%
South America (Pacific)	26.328	28.735	2.407	9,1%	2,3%
Red Sea	24.236	27.464	3.228	13,3%	2,2%
West Africa	23.492	26.036	2.544	10,8%	2,1%
South-Eastern Africa/Indian Ocean	20.835	21.679	844	4,0%	1,7%
Canada (Atlantic) and Great Lakes	11.003	11.556	553	5,0%	0,9%
Australia, New Zealand/Pacific Islands	9.771	10.353	583	6,0%	0,8%
Italy/France (Mediterranean)	17.093	7.767	-9.326	-54,6%	0,6%
North America (Pacific)	5.635	6.815	1.180	20,9%	0,5%
Europe (Atlantic)	3.694	4.556	863	23,4%	0,4%

Main areas of destination
Full TEU non transit



Main areas of origin
Full TEU non transit

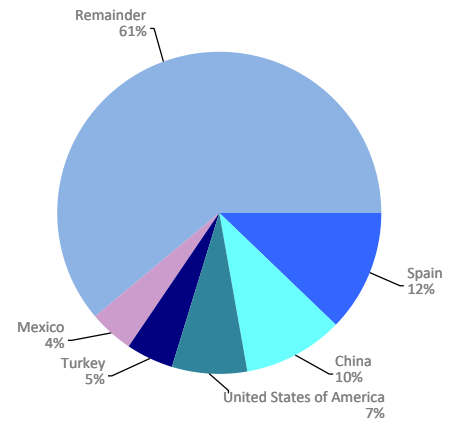


MARITIME TRAFFIC BY ORIGIN/DESTINATION

Ranking countries. Full TEU non transit

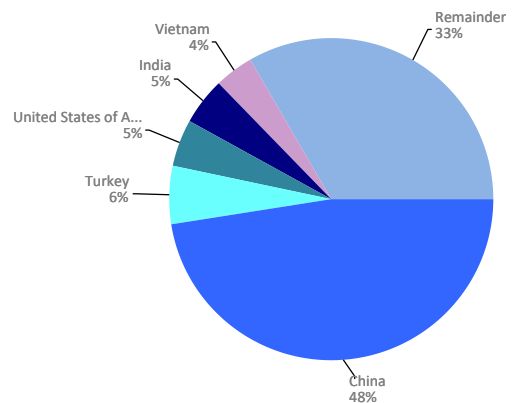
Loaded	Full TEU	% 24-23	% a/packaging
Spain	79.140	-2,9%	12,1%
China	67.074	6,7%	10,3%
United States of America	47.663	8,6%	7,3%
Turkey	31.250	21,1%	4,8%
Mexico	28.629	15,7%	4,4%
Morocco	26.320	46,1%	4,0%
Saudi Arabia	21.492	-0,4%	3,3%
Japan	19.904	-1,2%	3,0%
United Arab Emirates	19.744	-19,3%	3,0%
India	18.736	-23,0%	2,9%
Malaysia	15.349	6,9%	2,3%
Vietnam	15.132	24,8%	2,3%
Korea (South)	14.741	7,4%	2,3%
Israel	13.841	17,9%	2,1%
Egypt	13.318	40,6%	2,0%
Remainder	221.670	1,1%	33,9%
TOTAL	654.001	4,1%	100%

Main countries. Loaded



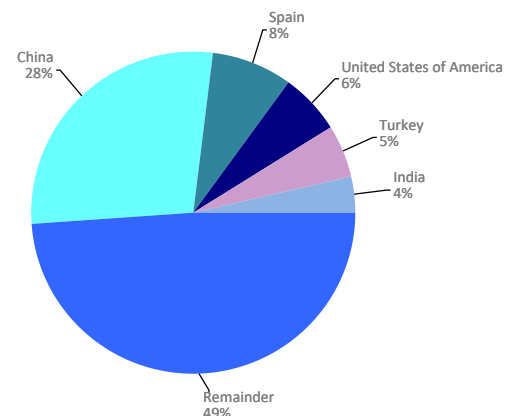
Unloaded	Full TEU	% 24-23	% a/packaging
China	284.111	10,7%	47,6%
Turkey	33.483	5,4%	5,6%
United States of America	29.522	20,5%	4,9%
India	27.127	9,0%	4,5%
Vietnam	24.180	5,4%	4,1%
Spain	21.155	6,1%	3,5%
Korea (South)	18.078	-8,3%	3,0%
Saudi Arabia	12.412	40,3%	2,1%
Egypt	10.517	11,7%	1,8%
Bangladesh	9.842	-12,4%	1,6%
Thailand	8.451	31,6%	1,4%
Brazil	8.056	30,4%	1,4%
Greece	7.770	4,1%	1,3%
Cambodia	7.676	23,3%	1,3%
Indonesia	7.400	3,6%	1,2%
Remainder	86.711	-1,9%	14,5%
TOTAL	596.487	8,1%	100%

Main countries. Unloaded



Total	Full TEU	% 24-23	% a/packaging
China	351.185	9,9%	28,1%
Spain	100.295	-1,1%	8,0%
United States of America	77.184	12,8%	6,2%
Turkey	64.733	12,5%	5,2%
India	45.863	-6,8%	3,7%
Vietnam	39.312	12,1%	3,1%
Mexico	34.476	13,5%	2,8%
Saudi Arabia	33.904	11,5%	2,7%
Korea (South)	32.819	-1,9%	2,6%
Morocco	28.424	42,4%	2,3%
Japan	25.146	-3,6%	2,0%
Egypt	23.835	26,2%	1,9%
United Arab Emirates	22.767	-16,3%	1,8%
Brazil	20.006	15,4%	1,6%
Greece	19.847	10,8%	1,6%
Remainder	330.696	1,1%	26,4%
TOTAL	1.250.488	6,0%	100%

Main countries. Total



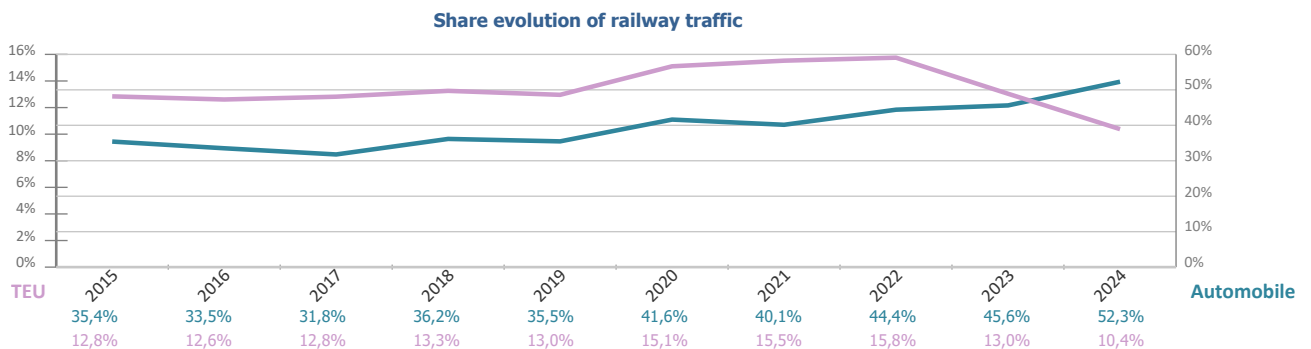
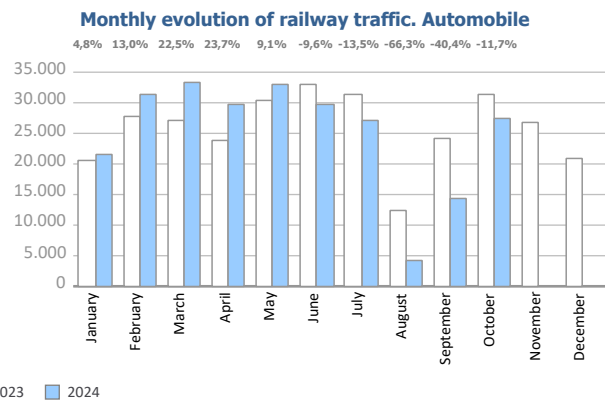
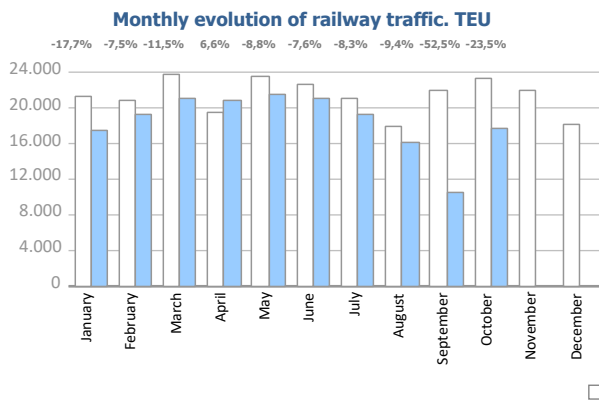
RAILWAY TRAFFIC

Monthly evolution of railway traffic. TEU

Monthly evolution of railway traffic	TEU 2023			TEU 2024			%		% of total port traffic 2024
	Loaded	Unloaded	Total	Loaded	Unloaded	Total	Monthly	Accumulated	
January	10.946	10.351	21.297	7.901	9.633	17.534	-17,7%	-17,7%	11,4%
February	10.012	10.850	20.862	8.751	10.545	19.296	-7,5%	-12,6%	12,2%
March	11.720	12.120	23.840	9.664	11.438	21.102	-11,5%	-12,2%	11,1%
April	9.632	9.846	19.478	10.070	10.684	20.754	6,6%	-7,9%	12,4%
May	12.232	11.299	23.531	10.133	11.320	21.453	-8,8%	-8,1%	11,2%
June	11.297	11.397	22.694	10.637	10.334	20.971	-7,6%	-8,0%	11,9%
July	10.049	10.979	21.028	9.288	9.992	19.280	-8,3%	-8,1%	10,5%
August	8.856	9.030	17.886	7.503	8.699	16.202	-9,4%	-8,2%	8,2%
September	10.815	11.129	21.944	5.460	4.964	10.424	-52,5%	-13,3%	5,9%
October	11.031	12.246	23.277	8.560	9.245	17.805	-23,5%	-14,4%	9,5%
November	10.067	11.795	21.862						
December	8.192	9.931	18.122						
Total	124.847	130.971	255.818	87.967	96.854	184.821			10,4%

Monthly evolution of railway traffic. Automobile

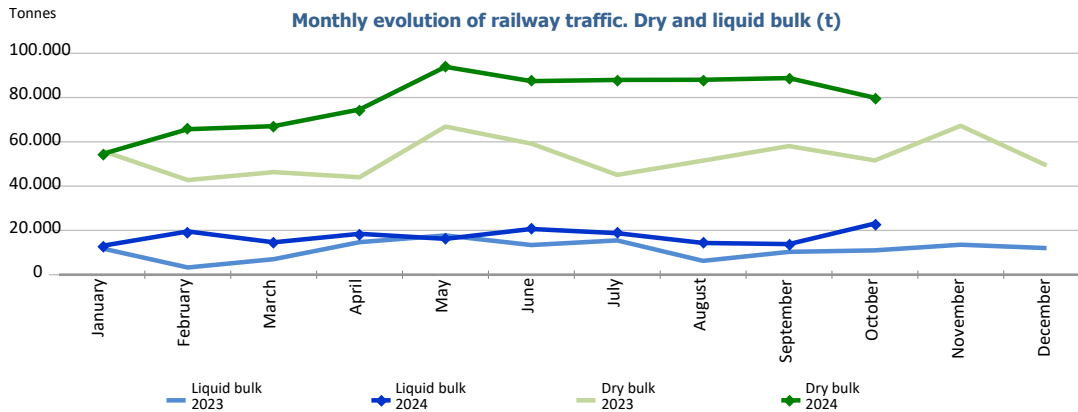
Monthly evolution of railway traffic	Automobile 2023			Automobile 2024			%		% of total port traffic 2024
	Loaded	Unloaded	Total	Loaded	Unloaded	Total	Monthly	Accumulated	
January	4.150	16.267	20.417	2.696	18.708	21.404	4,8%	4,8%	52,4%
February	5.096	22.553	27.649	4.150	27.099	31.249	13,0%	9,5%	61,5%
March	3.567	23.677	27.244	4.458	28.926	33.384	22,5%	14,2%	51,9%
April	4.515	19.415	23.930	3.573	26.030	29.603	23,7%	16,5%	55,4%
May	5.929	24.358	30.287	4.399	28.658	33.057	9,1%	14,8%	51,0%
June	5.878	27.021	32.899	4.552	25.180	29.732	-9,6%	9,9%	51,4%
July	6.807	24.450	31.257	5.752	21.286	27.038	-13,5%	6,1%	63,1%
August	1.982	10.394	12.376	799	3.375	4.174	-66,3%	1,7%	19,8%
September	5.584	18.633	24.217	1.963	12.459	14.422	-40,4%	-2,7%	41,1%
October	6.117	25.138	31.255	3.699	23.902	27.601	-11,7%	-3,8%	54,9%
November	5.350	21.525	26.875						
December	3.150	17.854	21.004						
Total	58.125	251.285	309.410	36.041	215.623	251.664			52,3%



RAILWAY TRAFFIC

Monthly evolution of railway traffic. Dry and liquid bulk. Tonnes

Monthly evolution of railway traffic	Tonnes 2023			Tonnes 2024			%	
	Dry bulk	Liquid bulk	Total	Dry bulk	Liquid bulk	Total	Monthly	Accumulated
January	55.964	11.888	67.852	54.457	13.024	67.481	-0,5%	-0,5%
February	42.746	3.263	46.009	65.710	19.534	85.244	85,3%	34,1%
March	46.334	7.014	53.348	67.073	14.630	81.703	53,2%	40,2%
April	44.027	14.701	58.728	74.604	18.473	93.077	58,5%	45,0%
May	66.894	17.738	84.632	93.873	16.191	110.064	30,1%	40,9%
June	59.200	13.398	72.598	87.416	20.649	108.065	48,9%	42,4%
July	45.081	15.485	60.566	87.962	18.748	106.710	76,2%	47,0%
August	51.511	6.251	57.762	88.033	14.326	102.359	77,2%	50,5%
September	58.090	10.320	68.410	88.794	13.828	102.622	50,0%	50,4%
October	51.617	10.995	62.612	79.898	23.100	102.998	64,5%	51,8%
November	67.236	13.547	80.783					
December	49.345	12.016	61.361					
Total	638.045	136.616	774.661	787.820	172.503	960.323		



Railway traffic.

Railway gauge traffic (u)	Monthly accumulated		%	% of accumulated total 2024
	2023	2024		
Iberian gauge	5.901	5.438	-7,8%	58,7%
UIC	419	764	82,3%	8,2%
FGC	2.420	3.064	26,6%	33,1%
Total	8.740	9.266	6,0%	100%

