

Port of Barcelona traffic statistics

Accumulated data November 2024

Statistics Service

Index

Traffic indicators

Total traffic	3
Main indicators	4
Breakdown of total traffic	5
Breakdown of traffic in transit	6
Monthly evolution of traffic	7

Container traffic

TEU evolution	8
Container traffic (TEU)	9

Passenger traffic

Passenger traffic	10
Passenger classification	11

Automobile traffic

Automobile traffic	12
--------------------	----

Short Sea Shipping traffic (SSS)

SSS Goods classification	13
SSS General cargo and Motorways of the sea (MoS)	14
SSS Ranking countries	15

Vessel traffic

Vessel traffic	16
----------------	----

Goods traffic

Mode of packaging and navigation	17
Goods by classification 4.3.7.	18
Goods ranking	19
Containerized goods by classification 4.3.7.	20

Maritime traffic by origin/destination

Geographical areas. Tonnes	21
Geographical areas. Full TEU non transit	22
Ranqing countries. Full TEU non transit	23

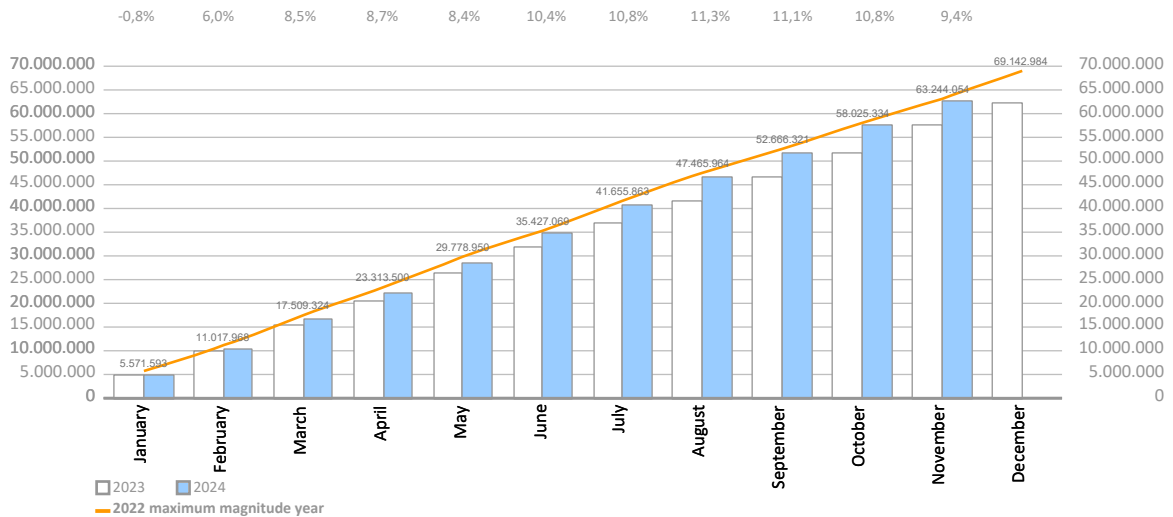
Railway traffic

Evolution of railway traffic (TEU and automobile)	24
Evolution of railway traffic (Solid and liquid bulk)	25
Railway gauge traffic	25

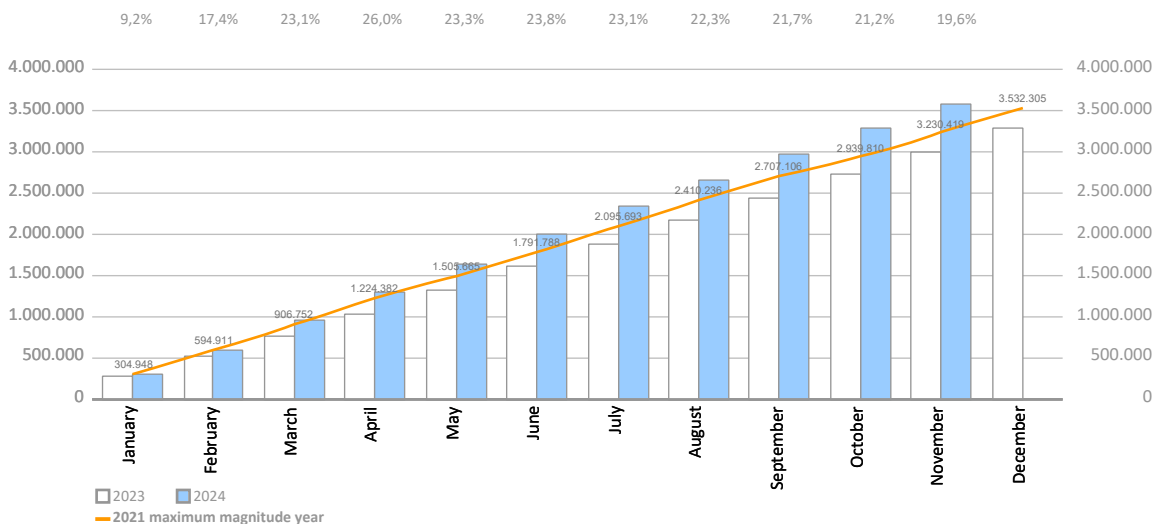
TRAFFIC INDICATORS

Total traffic	Monthly accumulated				% 24-23 accum. October	% 24-23 accum. September	Total traffic 2023
	2023	2024	Diff. 24-23	%			
Total throughput (tonnes)	57.446.027	62.871.643	5.425.616	9,4%	10,8%	11,1%	62.427.953
Supplies	1.504.489	1.743.213	238.723	15,9%	15,5%	14,6%	1.602.836
Fishing	1.518	2.541	1.023	67,4%	75,6%	76,4%	1.544
TOTAL TRAFFIC (tonnes)	58.952.035	64.617.397	5.665.362	9,6%	11,0%	11,2%	64.032.333
TEU	3.000.552	3.588.444	587.892	19,6%	21,2%	21,7%	3.280.243
UTI	388.714	400.774	12.061	3,1%	3,4%	2,6%	416.002
Automobiles (units)	723.838	631.093	-92.745	-12,8%	-13,3%	-13,8%	790.318
Vessels (units)	8.113	7.772	-341	-4,2%	-4,0%	-3,9%	8.766
Railway traffic (units)	9.693	10.217	524	5,4%	6,0%	6,5%	10.439
Cruise passengers (units)	3.442.183	3.533.035	90.852	2,6%	3,1%	6,1%	3.569.125
Ferry passengers (units)	1.643.137	1.653.836	10.699	0,7%	0,6%	1,1%	1.735.495
Automobile passengers (units)	486.727	502.155	15.428	3,2%	2,9%	3,4%	515.293

Monthly evolution of the accumulated traffic of goods. Tonnes



Monthly evolution of the accumulated traffic of goods. TEU



TRAFFIC INDICATORS

Main indicators	Monthly accumulated				Last 12 months	Total traffic 2023	% 12 months-2023
	2023	2024	Diff. 24-23	%			
Goods indicators by navigation and operation (tonnes)							
Navigation (t)	57.446.027	62.871.643	5.425.616	9,4%	67.853.568	62.427.953	8,7%
Domestic	7.506.859	8.009.440	502.581	6,7%	8.531.634	8.029.052	6,3%
Foreign	49.939.168	54.862.203	4.923.034	9,9%	59.321.935	54.398.900	9,0%
Operation (t)	57.446.027	62.871.643	5.425.616	9,4%	67.853.568	62.427.953	8,7%
Loaded	17.774.269	18.267.626	493.356	2,8%	19.656.625	19.163.269	2,6%
Unloaded	20.879.630	20.952.611	72.981	0,3%	22.740.680	22.667.699	0,3%
Transit	18.792.128	23.651.407	4.859.279	25,9%	25.456.263	20.596.985	23,6%
Goods indicators by main units							
Containers (TEU)	3.000.552	3.588.444	587.892	19,6%	3.868.135	3.280.243	17,9%
TEU O/D	1.801.101	1.965.850	164.749	9,1%	2.125.108	1.960.359	8,4%
TEU transit	1.199.452	1.622.594	423.143	35,3%	1.743.027	1.319.885	32,1%
Containerized tonnes	30.699.252	34.706.720	4.007.468	13,1%	37.533.624	33.526.156	12,0%
Level of containerization	74,60%	76,14%			76,30%	74,90%	
Passengers (u)	5.085.320	5.186.871	101.551	2,0%	5.406.171	5.304.620	1,9%
Regular line	1.643.137	1.653.836	10.699	0,7%	1.746.194	1.735.495	0,6%
Pleasure cruises	3.442.183	3.533.035	90.852	2,6%	3.659.977	3.569.125	2,5%
Automobiles (u)	723.838	631.093	-92.745	-12,8%	697.573	790.318	-11,7%
Loaded	380.493	393.644	13.151	3,5%	425.583	412.432	3,2%
Unloaded	232.460	145.194	-87.266	-37,5%	168.316	255.582	-34,1%
Transit	110.885	92.255	-18.630	-16,8%	103.674	122.304	-15,2%
Vessels (u)	8.113	7.772	-341	-4,2%	8.425	8.766	-3,9%
Number of calls	8.113	7.772	-341	-4,2%	8.425	8.766	-3,9%
GT	348.558.463	339.974.585	-8.583.878	-2,5%	365.716.838	374.300.716	-2,3%
Average tonnes by vessel	7.081	8.090	1.009	14,2%	8.054	7.122	13,1%
UTI	388.714	400.774	12.061	3,1%	428.062	416.002	2,9%
Domestic	243.649	249.869	6.220	2,6%	265.749	259.529	2,4%
% Full	61,9%	62,0%			62,0%	61,9%	
Foreign	145.065	150.905	5.841	4,0%	162.313	156.473	3,7%
% Full	90,4%	89,6%			89,6%	90,4%	

TRAFFIC INDICATORS

Breakdown of total traffic (tonnes)	Monthly accumulated				% 24-23 accum. October	% 24-23 accum. September	% of total accum. 2024
	2023	2024	Diff. 24-23	%			
Goods indicators by type of packaging (t)	57.446.027	62.871.643	5.425.616	9,4%	10,8%	11,1%	100%
Liquid bulk	11.859.475	12.931.727	1.072.252	9,0%	10,2%	10,7%	20,6%
Hydrocarbons	8.685.476	8.821.375	135.900	1,6%	2,7%	2,4%	14,0%
Petrol	2.503.562	3.739.147	1.235.585	49,4%	56,3%	64,6%	5,9%
Diesel oils	1.951.232	2.190.941	239.709	12,3%	9,7%	2,8%	3,5%
Natural gas	2.926.864	1.854.111	-1.072.753	-36,7%	-38,8%	-41,4%	2,9%
Fuel oil	1.069.395	781.171	-288.225	-27,0%	-24,1%	-24,8%	1,2%
Other petroleum products	213.553	236.754	23.201	10,9%	27,6%	45,8%	0,4%
Remainder	20.869	19.252	-1.617	-7,8%	0,5%	0,5%	0,0%
Other liquid bulk	3.174.000	4.110.351	936.352	29,5%	30,2%	32,2%	6,5%
Chemical products	1.048.636	2.324.789	1.276.153	121,7%	111,9%	105,1%	3,7%
Biofuel	1.274.139	911.209	-362.930	-28,5%	-24,4%	-20,7%	1,4%
Oils and fats	782.148	775.457	-6.692	-0,9%	2,3%	6,4%	1,2%
Natural/artificial fertilizer	45.089	49.232	4.143	9,2%	9,2%	22,0%	0,1%
Other cargo by type	12.069	32.993	20.924	173,4%	378,8%	766,4%	0,1%
Remainder	11.918	16.672	4.754	39,9%	38,7%	34,1%	0,0%
Dry bulk	4.432.778	4.359.097	-73.681	-1,7%	-2,7%	-5,9%	6,9%
Special installation	4.147.104	4.113.007	-34.097	-0,8%	-2,0%	-6,0%	6,5%
Soya bean	1.346.888	1.492.303	145.414	10,8%	9,3%	6,5%	2,4%
Cereals and flours	895.584	820.689	-74.895	-8,4%	-4,7%	-18,1%	1,3%
Cement and clinker	916.684	808.892	-107.792	-11,8%	-22,2%	-27,1%	1,3%
Potashes	447.430	496.099	48.669	10,9%	20,5%	21,3%	0,8%
Common salt	520.339	470.443	-49.896	-9,6%	-11,2%	-1,4%	0,7%
Remainder	20.179	24.582	4.403	21,8%	13,1%	-11,3%	0,0%
Without special installation	285.674	246.090	-39.585	-13,9%	-12,9%	-4,7%	0,4%
Scrap iron	183.516	143.475	-40.041	-21,8%	-21,1%	-17,0%	0,2%
Other non-metallic minerals	49.230	44.706	-4.524	-9,2%	-28,8%	-11,5%	0,1%
Other minerals and metallic waste	16.416	21.150	4.734	28,8%	28,8%	93,8%	0,0%
Chemical products	21.700	18.495	-3.205	-14,8%	6,9%	-7,3%	0,0%
Other cargo by type	0	9.251	9.251	0,0%	0,0%	0,0%	0,0%
Remainder	14.812	9.013	-5.799	-39,2%	4,7%	4,7%	0,0%
General cargo	41.153.774	45.580.820	4.427.045	10,8%	12,4%	13,0%	72,5%
Containerized	30.699.252	34.706.720	4.007.468	13,1%	15,2%	16,5%	55,2%
Tare of containers	6.134.499	7.263.991	1.129.491	18,4%	20,1%	20,6%	11,6%
Chemical products	4.484.627	5.729.267	1.244.640	27,8%	27,5%	27,5%	9,1%
Other cargo by type	3.315.891	3.966.959	651.068	19,6%	21,5%	23,5%	6,3%
Other food products	3.487.599	2.731.401	-756.197	-21,7%	-15,6%	-12,7%	4,3%
Machinery and spare parts	1.914.661	2.351.466	436.804	22,8%	23,5%	24,8%	3,7%
Remainder	11.361.974	12.663.636	1.301.662	11,5%	13,5%	15,0%	20,1%
Non-containerized	10.454.523	10.874.100	419.577	4,0%	4,3%	2,9%	17,3%
Tare of platform and wagons (Ro-Ro)	4.022.918	4.148.402	125.484	3,1%	3,1%	2,2%	6,6%
Other cargo by type	1.684.093	1.821.193	137.100	8,1%	8,6%	7,3%	2,9%
Machinery and spare parts	1.041.942	1.080.089	38.147	3,7%	4,0%	4,0%	1,7%
Automobiles and parts	1.198.990	1.007.602	-191.388	-16,0%	-16,7%	-18,0%	1,6%
Other food products	500.704	509.511	8.807	1,8%	1,4%	0,5%	0,8%
Remainder	2.005.877	2.307.303	301.426	15,0%	16,9%	13,3%	3,7%

TRAFFIC INDICATORS

Breakdown of traffic in transit (tonnes)	Monthly accumulated				% 24-23 accum. October	% 24-23 accum. September	% of total accum. 2024
	2023	2024	Diff. 24-23	%			
Goods indicators by type of packaging (t)	18.792.128	23.651.407	4.859.279	25,9%	31,2%	34,0%	100%
Liquid bulk	3.903.138	5.852.855	1.949.718	50,0%	59,6%	60,3%	24,7%
Hydrocarbons	2.561.777	3.615.695	1.053.919	41,1%	53,0%	53,4%	15,3%
Petrol	1.133.027	2.345.206	1.212.179	107,0%	124,2%	138,6%	9,9%
Fuel oil	746.025	647.515	-98.510	-13,2%	-11,8%	-12,8%	2,7%
Diesel oils	607.476	597.491	-9.985	-1,6%	7,1%	-7,8%	2,5%
Other petroleum products	75.249	25.484	-49.765	-66,1%	-31,5%	44,1%	0,1%
Remainder	0	0	0				0,0%
Other liquid bulk	1.341.361	2.237.160	895.799	66,8%	71,4%	72,2%	9,5%
Chemical products	482.046	1.509.319	1.027.274	213,1%	197,2%	182,1%	6,4%
Biofuel	833.688	677.994	-155.694	-18,7%	-10,3%	-5,6%	2,9%
Oils and fats	19.087	38.449	19.362	101,4%	101,4%	101,4%	0,2%
Other cargo by type	6.540	11.397	4.857	74,3%	269,7%		0,0%
Remainder	0	0	0				0,0%
Dry bulk	38.163	0	-38.163				0,0%
Special installation	38.163	0	-38.163				0,0%
Cereals and flours	25.397	0	-25.397				0,0%
Potashes	12.766	0	-12.766				0,0%
Remainder	0	0	0				0,0%
Without special installation	0	0	0				0,0%
Remainder	0	0	0				0,0%
General cargo	14.850.828	17.798.551	2.947.724	19,8%	24,2%	27,6%	75,3%
Containerized	14.436.436	17.307.167	2.870.731	19,9%	24,3%	27,7%	73,2%
Tare of containers	2.477.331	3.289.915	812.585	32,8%	36,6%	39,3%	13,9%
Chemical products	1.660.294	2.405.825	745.531	44,9%	43,5%	42,7%	10,2%
Other cargo by type	1.460.264	1.938.114	477.850	32,7%	36,9%	42,1%	8,2%
Other food products	2.294.813	1.612.348	-682.465	-29,7%	-21,6%	-16,8%	6,8%
Other construction materials	834.779	1.365.597	530.818	63,6%	60,8%	60,4%	5,8%
Remainder	5.708.955	6.695.368	986.412	17,3%	22,0%	26,2%	28,3%
Non-containerized	414.391	491.384	76.993	18,6%	21,1%	20,8%	2,1%
Automobiles and parts	181.172	166.810	-14.362	-7,9%	-8,1%	-7,7%	0,7%
Tare of platform and wagons (Ro-Ro)	54.169	80.682	26.514	48,9%	59,2%	59,8%	0,3%
Other cargo by type	52.743	60.767	8.024	15,2%	24,3%	32,6%	0,3%
Machinery and spare parts	61.280	60.144	-1.135	-1,9%	-15,8%	-19,3%	0,3%
Wines, beverages, spirits and derivatives	25.150	41.542	16.392	65,2%	82,6%	99,1%	0,2%
Remainder	39.878	81.438	41.560	104,2%	125,5%	110,1%	0,3%

TRAFFIC INDICATORS

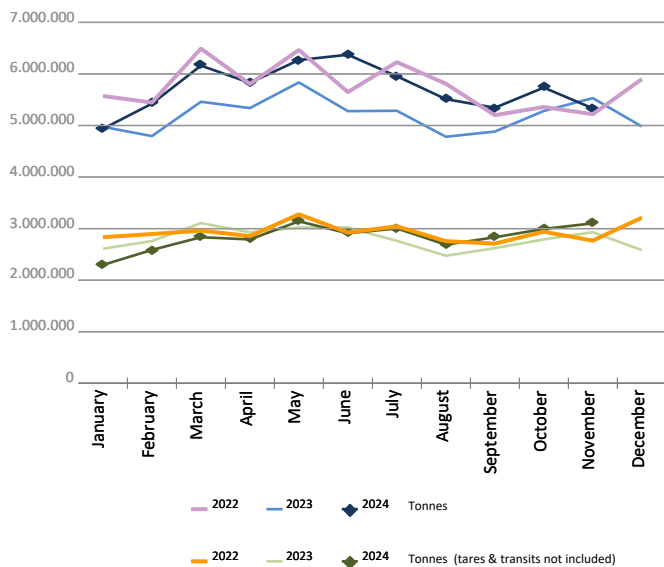
Monthly evolution of traffic. Tonnes

Monthly evolution of traffic	Total tonnes			%		Tonnes (tares & transits not included)			%	
	2023	2024	Diff. 24-23	Monthly	Accumulated	2023	2024	Diff. 24-23	Monthly	Accumulated
January	4.974.831	4.935.928	-38.903	-0,8%	-0,8%	2.610.318	2.296.193	-314.125	-12,0%	-12,0%
February	4.794.198	5.423.831	629.633	13,1%	6,0%	2.759.120	2.586.825	-172.295	-6,2%	-9,1%
March	5.460.878	6.161.231	700.353	12,8%	8,5%	3.107.624	2.833.101	-274.523	-8,8%	-9,0%
April	5.337.976	5.828.406	490.430	9,2%	8,7%	2.928.109	2.790.566	-137.543	-4,7%	-7,9%
May	5.835.621	6.269.806	434.185	7,4%	8,4%	3.022.618	3.141.401	118.783	3,9%	-5,4%
June	5.278.348	6.372.467	1.094.118	20,7%	10,4%	3.020.382	2.909.508	-110.874	-3,7%	-5,1%
July	5.286.328	5.955.652	669.325	12,7%	10,8%	2.762.709	3.003.035	240.326	8,7%	-3,2%
August	4.781.449	5.512.019	730.571	15,3%	11,3%	2.474.588	2.688.439	213.851	8,6%	-1,9%
September	4.882.475	5.344.119	461.644	9,5%	11,1%	2.621.228	2.832.340	211.112	8,1%	-0,9%
October	5.282.218	5.734.864	452.646	8,6%	10,8%	2.789.825	2.994.117	204.292	7,3%	-0,1%
November	5.531.706	5.333.319	-198.387	-3,6%	9,4%	2.931.465	3.102.916	171.451	5,8%	0,5%
December	4.981.925					2.583.934				
Total	62.427.953	62.871.643				33.611.920	31.178.441			

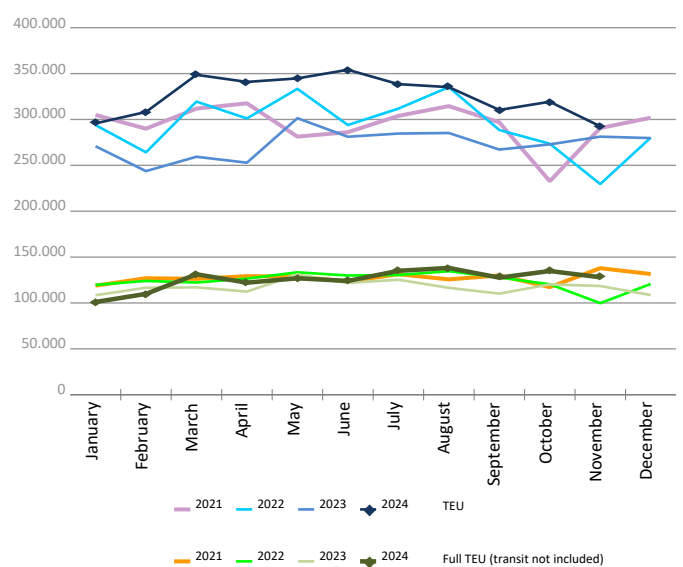
Monthly evolution of traffic. TEU

Monthly evolution of traffic	Total TEU			%		Full TEU (transit not included)			%	
	2023	2024	Diff. 24-23	Monthly	Accumulated	2023	2024	Diff. 24-23	Monthly	Accumulated
January	270.816	295.728	24.912	9,2%	9,2%	108.430	101.061	-7.369	-6,8%	-6,8%
February	243.685	308.167	64.482	26,5%	17,4%	116.640	109.884	-6.757	-5,8%	-6,3%
March	259.357	348.654	89.296	34,4%	23,1%	117.011	131.259	14.248	12,2%	0,0%
April	252.909	340.929	88.020	34,8%	26,0%	112.397	122.134	9.736	8,7%	2,2%
May	301.382	344.790	43.408	14,4%	23,3%	131.146	126.935	-4.212	-3,2%	1,0%
June	281.169	354.151	72.983	26,0%	23,8%	121.905	124.002	2.098	1,7%	1,1%
July	284.638	338.508	53.870	18,9%	23,1%	125.356	135.035	9.680	7,7%	2,1%
August	285.262	335.252	49.990	17,5%	22,3%	116.482	138.193	21.711	18,6%	4,1%
September	267.204	310.405	43.201	16,2%	21,7%	110.162	127.593	17.431	15,8%	5,3%
October	272.864	319.332	46.468	17,0%	21,2%	120.252	134.821	14.569	12,1%	6,0%
November	281.267	292.531	11.263	4,0%	19,6%	118.502	128.023	9.521	8,0%	6,2%
December	279.691					108.618				
Total	3.280.243	3.588.444				1.406.899	1.378.937			

Goods (total tonnes)



Containers (total TEU)



CONTAINER TRAFFIC

TEU evolution

Full-unloaded foreign	Full TEU			%		Full-loaded foreign	Full TEU			%	
	2023	2024	Diff. 24-23	Monthly	Accumulated		2023	2024	Diff. 24-23	Monthly	Accumulated
January	49.138	41.691	-7.447	-15,2%	-15,2%	January	51.046	49.933	-1.113	-2,2%	-2,2%
February	51.449	44.498	-6.951	-13,5%	-14,3%	February	56.052	55.500	-552	-1,0%	-1,6%
March	44.515	58.372	13.858	31,1%	-0,4%	March	60.781	61.863	1.082	1,8%	-0,3%
April	51.432	57.413	5.982	11,6%	2,8%	April	51.392	55.227	3.835	7,5%	1,5%
May	64.095	56.609	-7.486	-11,7%	-0,8%	May	56.516	60.495	3.979	7,0%	2,6%
June	53.940	59.082	5.142	9,5%	1,0%	June	57.195	54.880	-2.315	-4,0%	1,5%
July	59.685	63.600	3.915	6,6%	1,9%	July	54.831	61.609	6.779	12,4%	3,0%
August	56.638	66.928	10.290	18,2%	4,0%	August	50.134	61.448	11.315	22,6%	5,3%
September	48.415	65.353	16.938	35,0%	7,1%	September	50.745	52.236	1.491	2,9%	5,0%
October	52.489	61.794	9.305	17,7%	8,2%	October	57.938	62.384	4.447	7,7%	5,3%
November	48.781	58.500	9.719	19,9%	9,2%	November	59.645	58.585	-1.060	-1,8%	4,6%
December	43.001					December	55.660				
Total	623.574	633.837				Total	661.932	634.159			

Full-unloaded domestic	Full TEU			%		Full-loaded domestic	Full TEU			%	
	2023	2024	Diff. 24-23	Monthly	Accumulated		2023	2024	Diff. 24-23	Monthly	Accumulated
January	1.702	2.174	473	27,8%	27,8%	January	6.545	7.264	719	11,0%	11,0%
February	1.836	2.269	434	23,6%	25,6%	February	7.304	7.617	313	4,3%	7,4%
March	2.227	2.280	53	2,4%	16,6%	March	9.488	8.744	-744	-7,8%	1,2%
April	1.818	2.011	194	10,6%	15,2%	April	7.756	7.483	-274	-3,5%	0,0%
May	2.223	2.226	3	0,1%	11,8%	May	8.313	7.606	-708	-8,5%	-1,8%
June	1.938	1.919	-19	-1,0%	9,7%	June	8.833	8.122	-712	-8,1%	-2,9%
July	1.881	1.988	107	5,7%	9,1%	July	8.960	7.839	-1.121	-12,5%	-4,4%
August	1.989	1.935	-54	-2,7%	7,6%	August	7.722	7.882	161	2,1%	-3,6%
September	2.163	1.981	-182	-8,4%	5,7%	September	8.839	8.024	-816	-9,2%	-4,3%
October	2.164	2.370	206	9,5%	6,1%	October	7.662	8.273	611	8,0%	-3,2%
November	1.913	2.091	178	9,3%	6,4%	November	8.164	8.848	685	8,4%	-2,1%
December	1.886					December	8.072				
Total	23.737	23.242				Total	97.656	87.699			

Full - Transit	Full TEU			%		Empty	Empty TEU			%	
	2023	2024	Diff. 24-23	Monthly	Accumulated		2023	2024	Diff. 24-23	Monthly	Accumulated
January	97.136	112.121	14.985	15,4%	15,4%	January	65.251	82.546	17.296	26,5%	26,5%
February	71.919	117.906	45.987	63,9%	36,1%	February	55.126	80.377	25.251	45,8%	35,3%
March	83.590	133.678	50.088	59,9%	44,0%	March	58.757	83.718	24.961	42,5%	37,7%
April	83.961	134.379	50.419	60,1%	48,0%	April	56.551	84.416	27.865	49,3%	40,5%
May	97.501	116.212	18.711	19,2%	41,5%	May	72.735	101.644	28.909	39,7%	40,3%
June	84.537	140.218	55.681	65,9%	45,5%	June	74.728	89.932	15.204	20,3%	36,4%
July	93.112	121.808	28.696	30,8%	43,2%	July	66.171	81.665	15.494	23,4%	34,5%
August	83.799	107.933	24.134	28,8%	41,5%	August	84.981	89.126	4.145	4,9%	29,8%
September	86.284	96.349	10.065	11,7%	38,2%	September	70.759	86.464	15.705	22,2%	28,9%
October	90.691	97.680	6.990	7,7%	35,0%	October	61.921	86.831	24.910	40,2%	29,9%
November	86.555	82.957	-3.599	-4,2%	31,5%	November	76.210	81.552	5.341	7,0%	27,6%
December	90.642					December	80.432				
Total	1.049.724	1.261.238				Total	823.621	948.269			

CONTAINER TRAFFIC

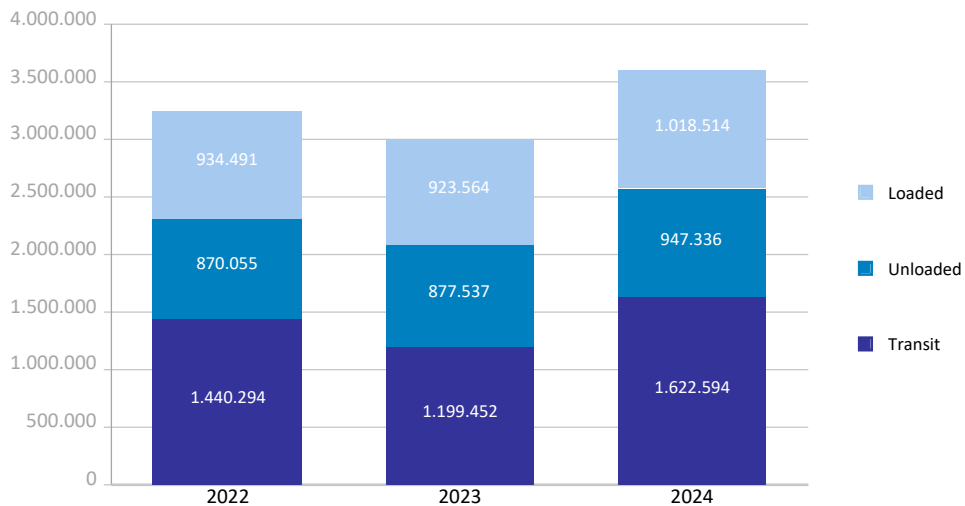
TEU

Container traffic	Monthly accumulated 2023			Monthly accumulated 2024			%
	Domestic	Foreign	Total	Domestic	Foreign	Total	
Total traffic	205.534	2.795.019	3.000.552	203.075	3.385.369	3.588.444	19,6%
Unloaded	107.307	1.399.584	1.506.891	105.346	1.694.877	1.800.223	19,5%
Roll On-Roll Off	24.907	13.787	38.694	21.260	7.160	28.420	-26,6%
Lift On-Lift Off	82.401	1.385.797	1.468.198	84.087	1.687.717	1.771.803	20,7%
Loaded	98.227	1.395.435	1.493.661	97.729	1.690.493	1.788.221	19,7%
Roll On-Roll Off	27.173	13.783	40.956	22.207	7.240	29.447	-28,1%
Lift On-Lift Off	71.054	1.381.652	1.452.706	75.522	1.683.253	1.758.775	21,1%

Breakdown by navigation and operation	Monthly accumulated 2023			Monthly accumulated 2024			%
	Domestic	Foreign	Total	Domestic	Foreign	Total	
Loaded	98.016	825.548	923.564	97.609	920.905	1.018.514	10,3%
Full	89.585	606.272	695.856	87.699	634.159	721.858	3,7%
Empty	8.431	219.277	227.708	9.910	286.747	296.657	30,3%
Unloaded	103.872	773.665	877.537	102.105	845.231	947.336	8,0%
Full	21.852	580.574	602.425	23.242	633.837	657.079	9,1%
Empty	82.021	193.092	275.112	78.863	211.394	290.257	5,5%
Transit	3.646	1.195.806	1.199.452	3.361	1.619.234	1.622.594	35,3%
Full	38	959.044	959.082	13	1.261.226	1.261.238	31,5%
Empty	3.608	236.762	240.370	3.348	358.008	361.356	50,3%

Total traffic	205.534	2.795.019	3.000.552	203.075	3.385.369	3.588.444	19,6%
Full	111.474	2.145.889	2.257.363	110.954	2.529.221	2.640.175	17,0%
Empty	94.060	649.130	743.189	92.121	856.148	948.269	27,6%
% Empty	45,8%	23,2%	24,8%	45,4%	25,3%	26,4%	
% Transit	1,8%	42,8%	40,0%	1,7%	47,8%	45,2%	

General cargo distribution by operation (TEU)

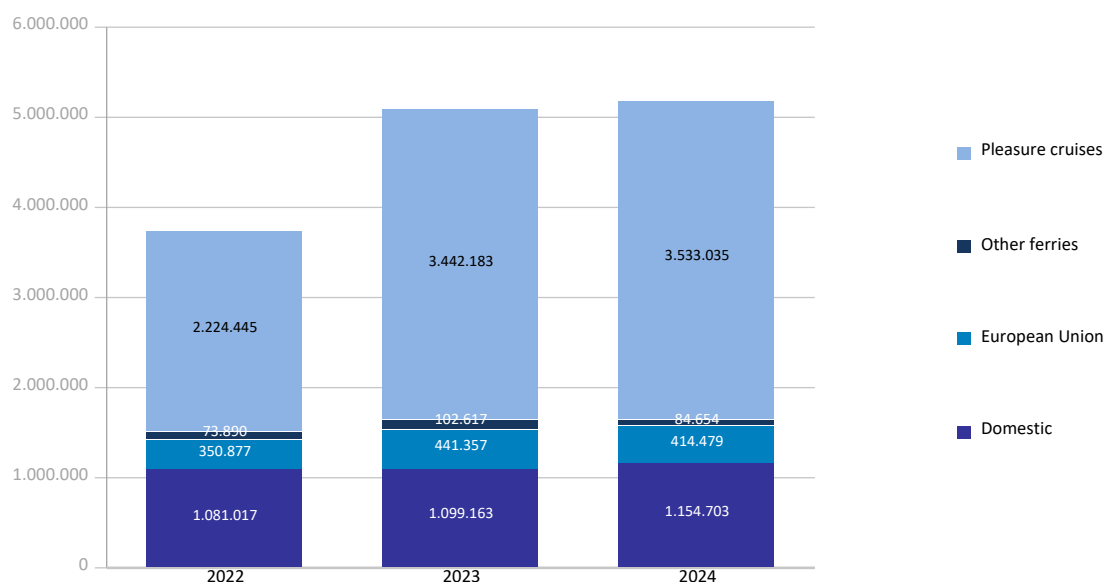


PASSENGER TRAFFIC

Total passenger traffic (units)	Monthly accumulated				% 24-23 accum. October	% 24-23 accum. September
	2023	2024	Diff. 24-23	%		
Total passengers	5.085.320	5.186.871	101.551	2,0%	2,2%	4,3%
Embarkation	1.770.540	1.842.056	71.516	4,0%	4,0%	5,9%
Disembarkation	1.727.815	1.802.446	74.631	4,3%	4,4%	6,5%
Transit	1.586.965	1.542.369	-44.596	-2,8%	-2,2%	-0,2%
Regular line ferries	1.643.137	1.653.836	10.699	0,7%	0,6%	1,1%
Embarkation	836.864	844.396	7.532	0,9%	0,9%	1,4%
Disembarkation	806.273	809.440	3.167	0,4%	0,2%	0,7%
Domestic	1.099.163	1.154.703	55.540	5,1%	4,7%	5,3%
Embarkation	566.667	597.319	30.652	5,4%	5,1%	5,8%
Disembarkation	532.496	557.384	24.888	4,7%	4,1%	4,8%
European Union	441.357	414.479	-26.878	-6,1%	-5,4%	-5,2%
Embarkation	218.645	204.684	-13.961	-6,4%	-5,6%	-5,2%
Disembarkation	222.712	209.795	-12.917	-5,8%	-5,3%	-5,2%
Other ferries	102.617	84.654	-17.963	-17,5%	-17,2%	-16,7%
Embarkation	51.552	42.393	-9.159	-17,8%	-18,3%	-18,1%
Disembarkation	51.065	42.261	-8.804	-17,2%	-16,1%	-15,3%
Pleasure cruises	3.442.183	3.533.035	90.852	2,6%	3,1%	6,1%
Embarkation	933.676	997.660	63.984	6,9%	6,8%	10,5%
Disembarkation	921.542	993.006	71.464	7,8%	8,2%	12,3%
Transit	1.586.965	1.542.369	-44.596	-2,8%	-2,2%	-0,2%

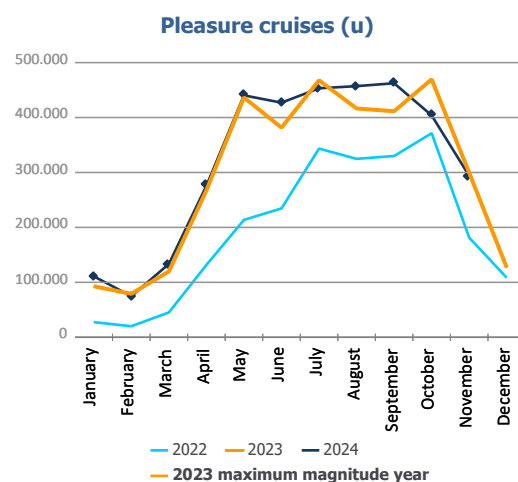
Total passenger calls (units)	Monthly accumulated				% 24-23 accum. October	% 24-23 accum. September
	2023	2024	Diff. 24-23	%		
Total number of calls	3.799	3.590	-209	-5,5%	-5,8%	-6,2%
Regular Line ferries	3.027	2.832	-195	-6,4%	-6,6%	-7,0%
Pleasure cruises	772	758	-14	-1,8%	-2,7%	-2,7%

Passenger traffic distribution (u)

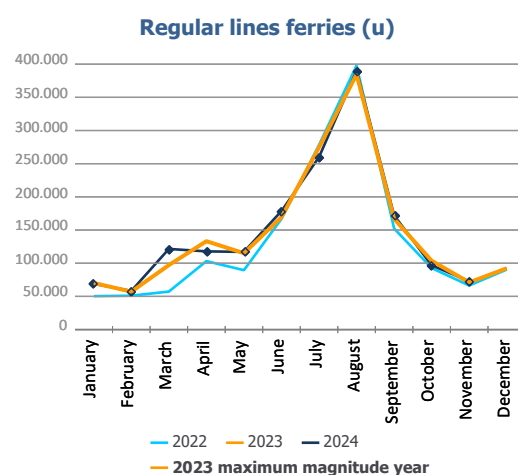


PASSENGER CLASSIFICATION

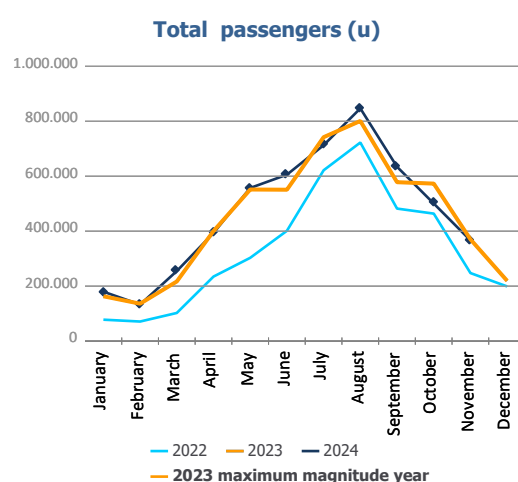
Monthly evolution of passenger traffic	Pleasure cruises			%	
	2023	2024	Diff. 24-23	Monthly	Accumulated
January	93.013	111.036	18.023	19,4%	19,4%
February	79.194	74.939	-4.255	-5,4%	8,0%
March	119.885	133.501	13.616	11,4%	9,4%
April	267.420	275.893	8.473	3,2%	6,4%
May	436.569	440.310	3.741	0,9%	4,0%
June	381.587	427.017	45.430	11,9%	6,2%
July	467.607	453.184	-14.423	-3,1%	3,8%
August	416.517	457.134	40.617	9,8%	4,9%
September	411.457	462.381	50.924	12,4%	6,1%
October	469.510	403.903	-65.607	-14,0%	3,1%
November	299.424	293.737	-5.687	-1,9%	2,6%
December	126.942				
Total	3.569.125	3.533.035			



Monthly evolution of passenger traffic	Regular lines ferries			%	
	2023	2024	Diff. 24-23	Monthly	Accumulated
January	70.262	68.931	-1.331	-1,9%	-1,9%
February	57.059	58.232	1.173	2,1%	-0,1%
March	97.166	121.528	24.362	25,1%	10,8%
April	133.201	117.845	-15.356	-11,5%	2,5%
May	115.112	117.084	1.972	1,7%	2,3%
June	169.419	178.722	9.303	5,5%	3,1%
July	274.632	259.895	-14.737	-5,4%	0,6%
August	384.652	389.879	5.227	1,4%	0,8%
September	166.887	172.031	5.144	3,1%	1,1%
October	103.714	96.842	-6.872	-6,6%	0,6%
November	71.033	72.847	1.814	2,6%	0,7%
December	92.358				
Total	1.735.495	1.653.836			



Monthly evolution of passenger traffic	Total passengers			%	
	2023	2024	Diff. 24-23	Monthly	Accumulated
January	163.275	179.967	16.692	10,2%	10,2%
February	136.253	133.171	-3.082	-2,3%	4,5%
March	217.051	255.029	37.978	17,5%	10,0%
April	400.621	393.738	-6.883	-1,7%	4,9%
May	551.681	557.394	5.713	1,0%	3,4%
June	551.006	605.739	54.733	9,9%	5,2%
July	742.239	713.079	-29.160	-3,9%	2,8%
August	801.169	847.013	45.844	5,7%	3,4%
September	578.344	634.412	56.068	9,7%	4,3%
October	573.224	500.745	-72.479	-12,6%	2,2%
November	370.457	366.584	-3.873	-1,0%	2,0%
December	219.300				
Total	5.304.620	5.186.871			

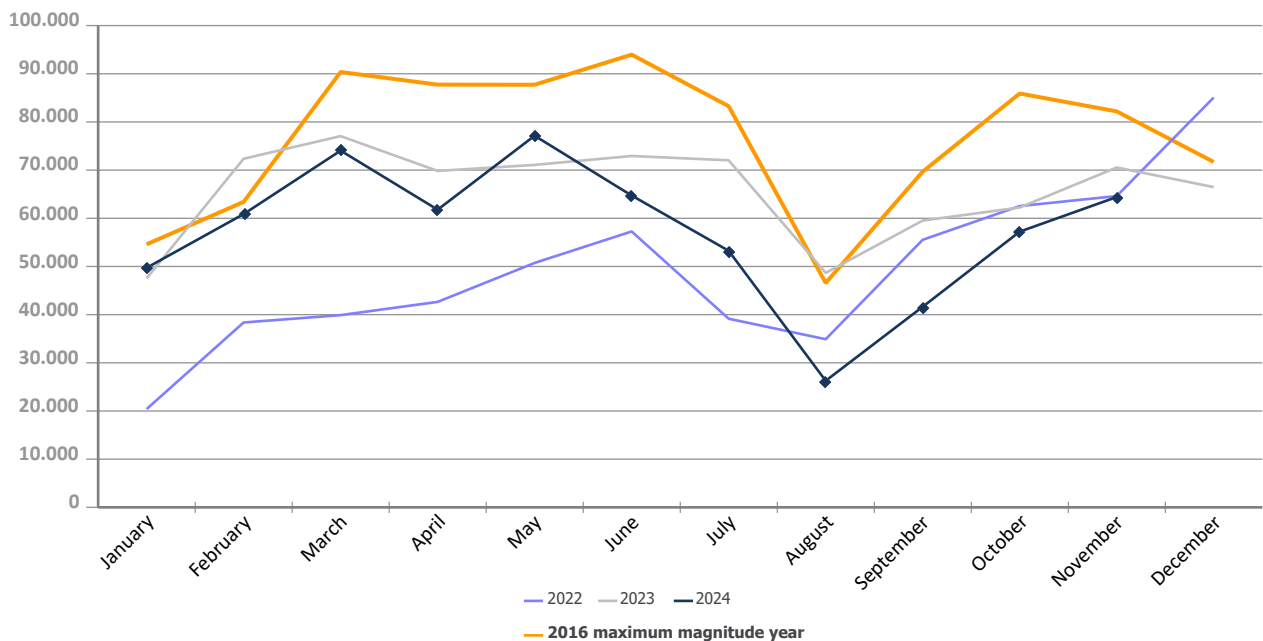


AUTOMOBILE TRAFFIC

Total automobile traffic (units)	Monthly accumulated				% 24-23 accum. October	% 24-23 accum. September
	2023	2024	Diff. 24-23	%		
Automobile traffic by navigation and operation	723.838	631.093	-92.745	-12,8%	-13,3%	-13,8%
Domestic	100.861	104.142	3.281	3,3%	-0,8%	-1,3%
Loaded	82.631	80.958	-1.673	-2,0%	-2,2%	-1,7%
Unloaded	18.124	23.111	4.987	27,5%	7,5%	2,8%
Transit	106	73	-33	-31,1%	-31,1%	-31,1%
Foreign	622.977	526.951	-96.026	-15,4%	-15,3%	-15,8%
Loaded	297.862	312.686	14.824	5,0%	4,2%	3,7%
Unloaded	214.336	122.083	-92.253	-43,0%	-41,8%	-42,4%
Transit	110.779	92.182	-18.597	-16,8%	-16,5%	-16,6%

Monthly automobile traffic (u)	Monthly		Accumulated		%	
	2023	2024	2023	2024	Monthly	Accumulated
January	47.534	49.721	47.534	49.721	4,6%	4,6%
February	72.364	60.872	119.898	110.593	-15,9%	-7,8%
March	77.057	74.044	196.955	184.637	-3,9%	-6,3%
April	69.834	61.791	266.789	246.428	-11,5%	-7,6%
May	71.083	77.134	337.872	323.562	8,5%	-4,2%
June	72.935	64.728	410.807	388.290	-11,3%	-5,5%
July	72.037	53.260	482.844	441.550	-26,1%	-8,6%
August	48.671	26.273	531.515	467.823	-46,0%	-12,0%
September	59.527	41.632	591.042	509.455	-30,1%	-13,8%
October	62.244	57.226	653.286	566.681	-8,1%	-13,3%
November	70.552	64.412	723.838	631.093	-8,7%	-12,8%
December	66.480		790.318			

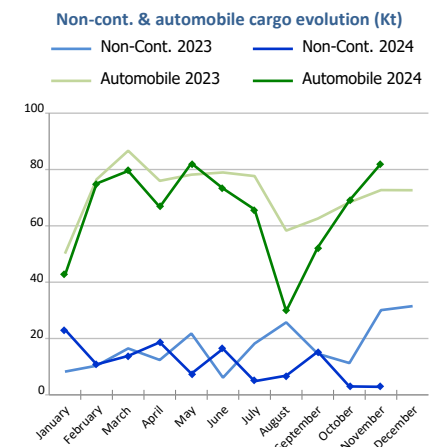
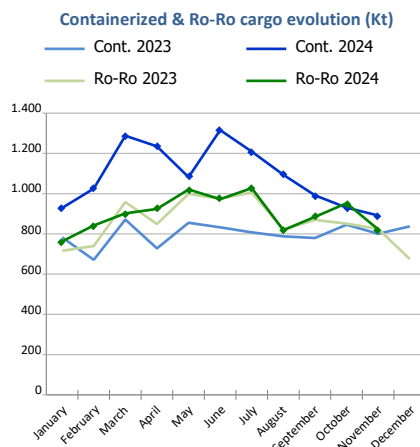
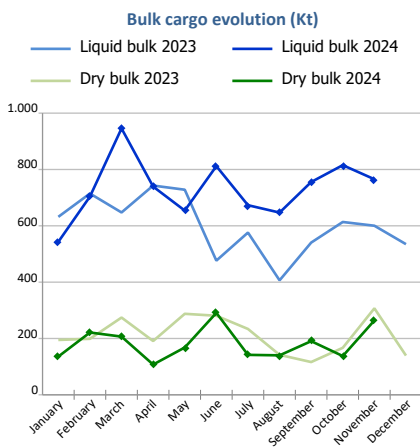
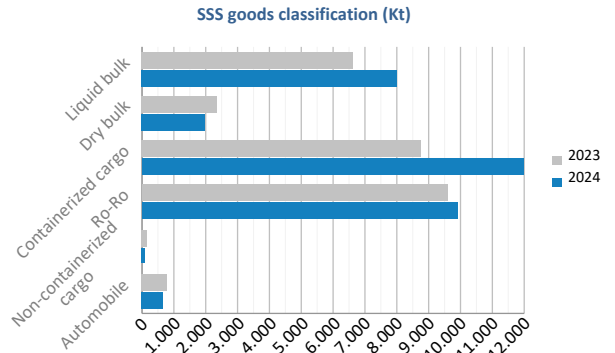
Evolution of monthly automobile traffic (u)



SHORT SEA SHIPPING (SSS)

SSS Goods classification

Goods classification. Tonnes	Monthly accumulated		%	% of total port traffic
	2023	2024		
Liquid bulk	6.678.179	8.054.282	20,6%	62,3%
Dry bulk	2.393.293	2.004.115	-16,3%	46,0%
Containerized cargo	8.761.892	11.990.768	36,9%	35,0%
Ro-Ro	9.609.374	9.929.563	3,3%	99,8%
Non-containerized cargo	175.169	123.117	-29,7%	27,5%
Automobile	785.963	718.251	-8,6%	77,1%
Total	28.403.869	32.820.097	15,5%	52,2%



SSS General Cargo	Spanish Islands			SSS Remainder			TOTAL		
	2023	2024	%	2023	2024	%	2023	2024	%
Containerized cargo	833.275	888.988	6,7%	7.928.618	11.101.780	40,0%	8.761.892	11.990.768	36,9%
O/D	811.759	855.559	5,4%	3.000.870	3.480.056	16,0%	3.812.629	4.335.616	13,7%
Transit	21.516	33.428	55,4%	4.927.748	7.621.724	54,7%	4.949.263	7.655.152	54,7%
Ro-Ro	5.445.812	5.654.617	3,8%	4.163.561	4.274.947	2,7%	9.609.374	9.929.563	3,3%
O/D	5.445.812	5.654.563	3,8%	3.933.350	3.926.786	-0,2%	9.379.162	9.581.348	2,2%
Transit	0	54		230.212	348.161	51,2%	230.212	348.215	51,3%
Non-cont. cargo	1.926	1.208	-37,3%	173.243	121.908	-29,6%	175.169	123.117	-29,7%
O/D	1.926	1.208	-37,3%	168.780	119.032	-29,5%	170.706	120.240	-29,6%
Transit	0	0		4.463	2.877	-35,5%	4.463	2.877	-35,5%
Automobile	157.293	162.931	3,6%	628.669	555.320	-11,7%	785.963	718.251	-8,6%
O/D	156.906	162.878	3,8%	513.565	462.159	-10,0%	670.471	625.037	-6,8%
Transit	387	53	-86,4%	115.105	93.162	-19,1%	115.492	93.214	-19,3%



Short Sea Shipping (SSS):

The transport of cargo/goods and passengers between ports situated in the European Union or between these ports and non-European ports with a coastline in seas bordering Europe. This applies to cargo either originating from or is destined for these countries (in accordance with the European Shortsea Network).

Motorways of the sea (MoS):

Short Sea Shipping services as an alternative to road transport and which fulfill the following criteria: minimum frequency of 3 calls per week and calling at a maximum of 3 different ports.

General cargo:

Including containerized cargo, non-containerized cargo, Ro-Ro and automobiles.

Containerized cargo:

Excluding container cargo by Ro-Ro.

Non-containerized cargo:

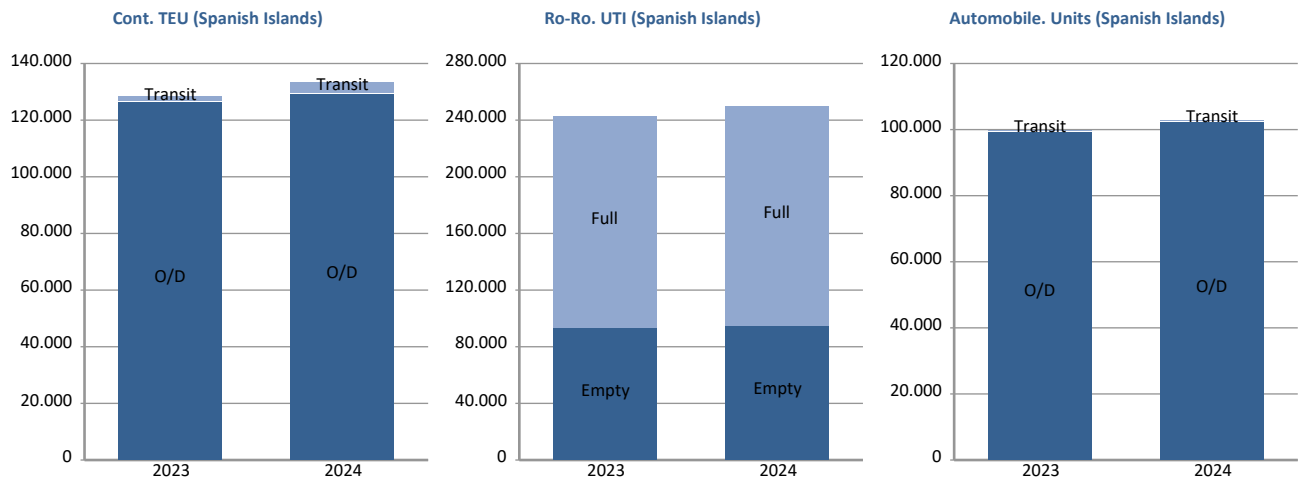
General non-containerized goods other than Ro-Ro and excluding automobiles.

Ro-Ro:

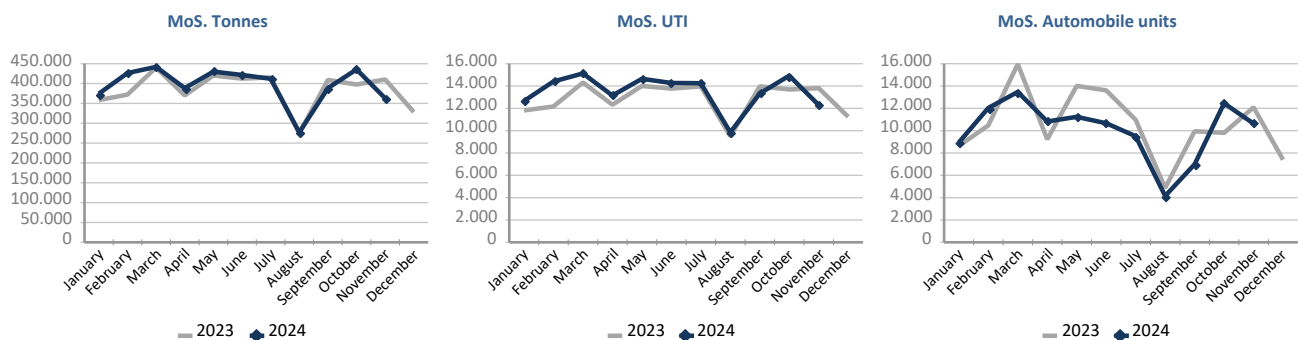
General cargo carried in UTI's. Excluding automobiles.

SHORT SEA SHIPPING (SSS)

SSS General cargo	Spanish Islands			SSS Remainder			TOTAL		
	2023	2024	%	2023	2024	%	2023	2024	%
Containerized cargo. TEU	128.196	133.370	4,0%	761.898	1.085.418	42,5%	890.094	1.218.788	36,9%
O/D	125.996	129.013	2,4%	364.798	418.266	14,7%	490.794	547.279	11,5%
Full	78.401	83.806	6,9%	213.749	241.539	13,0%	292.150	325.344	11,4%
Empty	47.595	45.208	-5,0%	151.049	176.727	17,0%	198.644	221.935	11,7%
Transit	2.200	4.357	98,0%	397.101	667.152	68,0%	399.301	671.509	68,2%
Full	1.810	3.041	68,0%	356.436	588.538	65,1%	358.246	591.579	65,1%
Empty	390	1.316	237,4%	40.665	78.615	93,3%	41.055	79.931	94,7%
Ro-Ro. UTI	243.340	249.393	2,5%	145.220	151.269	4,2%	388.560	400.662	3,1%
Full	150.965	155.024	2,7%	130.924	135.075	3,2%	281.889	290.099	2,9%
Empty	92.375	94.369	2,2%	14.296	16.194	13,3%	106.671	110.563	3,6%
Automobile units	99.751	102.472	2,7%	433.804	399.267	-8,0%	533.555	501.739	-6,0%
O/D	99.466	102.433	3,0%	358.733	334.012	-6,9%	458.199	436.445	-4,7%
Transit	285	39	-86,3%	75.071	65.255	-13,1%	75.356	65.294	-13,4%



Motorways of the Sea (MoS)	2023	EU		Non-EU			TOTAL		
		2024	%	2023	2024	%	2023	2024	%
Tonnes	4.263.515	4.349.901	2,0%	17.069	8.803	-48,4%	4.280.584	4.358.704	1,8%
Loaded	2.271.467	2.339.824	3,0%	11.871	7.122	-40,0%	2.283.338	2.346.946	2,8%
Unloaded	1.992.048	2.010.077	0,9%	5.197	1.681	-67,7%	1.997.246	2.011.758	0,7%
UTI	142.527	148.524	4,2%	805	394	-51,1%	143.332	148.918	3,9%
Loaded	72.541	76.367	5,3%	561	303	-46,0%	73.102	76.670	4,9%
Unloaded	69.986	72.157	3,1%	244	91	-62,7%	70.230	72.248	2,9%
Automobile units	118.150	109.536	-7,3%	1.475	1.377	-6,6%	119.625	110.913	-7,3%
Loaded	110.941	104.115	-6,2%	1.470	1.371	-6,7%	112.411	105.486	-6,2%
Unloaded	7.209	5.421	-24,8%	5	6	20,0%	7.214	5.427	-24,8%

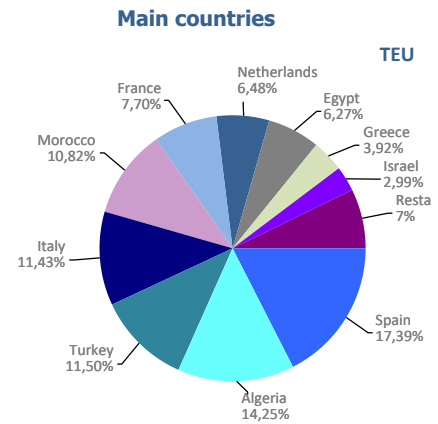


UTI: All those means of unitization, self-propelled or otherwise, that are directly or indirectly used as a means of land transport (e.g. trailers, platforms, trucks, freezer trucks, etc.) are considered as UTI. Containers are not considered to be included, except those that are handled by an equipment transport of the own terminal.

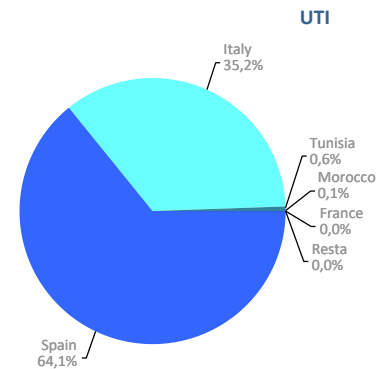
SHORT SEA SHIPPING (SSS)

SSS Ranking countries by mode of packaging

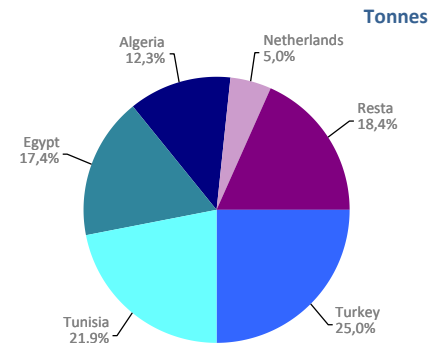
Containerized cargo. TEU	Monthly accumulated				% of total 2024
	2023	2024	Diff. 24-23	%	
Total	890.094	1.218.788	328.694	36,9%	100%
Spain	186.318	211.905	25.588	13,7%	17,4%
Algeria	183.139	173.679	-9.460	-5,2%	14,3%
Turkey	115.354	140.204	24.850	21,5%	11,5%
Italy	64.030	139.290	75.260	117,5%	11,4%
Morocco	103.909	131.890	27.980	26,9%	10,8%
France	56.985	93.844	36.860	64,7%	7,7%
Netherlands	1.586	78.953	77.367	4878,1%	6,5%
Egypt	59.804	76.364	16.560	27,7%	6,3%
Greece	28.539	47.805	19.266	67,5%	3,9%
Israel	23.407	36.500	13.093	55,9%	3,0%
Remainder	67.025	88.357	21.332	31,8%	7,2%



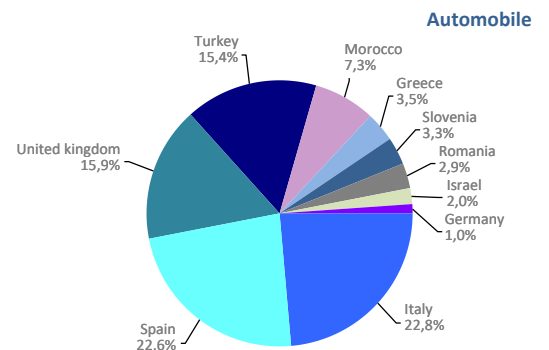
Ro-Ro. UTI	Monthly accumulated				% of total 2024
	2023	2024	Diff. 24-23	%	
Total	388.560	400.662	12.103	3,1%	100%
Spain	248.574	256.791	8.217	3,3%	64,1%
Italy	137.259	141.119	3.860	2,8%	35,2%
Tunisia	1.811	2.327	517	28,5%	0,6%
Morocco	889	408	-481	-54,1%	0,1%
France	13	13	0	0,0%	0,0%
Remainder	14	4	-10	-71,4%	0,0%



Non-cont. cargo. Tonnes	Monthly accumulated				% of total 2024
	2023	2024	Diff. 24-23	%	
Total	175.169	123.117	-52.052	-29,7%	100%
Turkey	19.498	30.763	11.264	57,8%	25,0%
Tunisia	11.063	26.904	15.842	143,2%	21,9%
Egypt	60.993	21.479	-39.514	-64,8%	17,4%
Algeria	14.394	15.190	796	5,5%	12,3%
Netherlands	0	6.152	6.152	0,0%	5,0%
Remainder	69.221	22.629	-46.593	-67,3%	18,4%



Automobile. Units	Monthly accumulated				% of total 2024
	2023	2024	Diff. 24-23	%	
Total	533.555	501.739	-31.816	-6,0%	100%
Italy	127.263	114.249	-13.014	-10,2%	22,8%
Spain	111.693	113.328	1.635	1,5%	22,6%
United kingdom	81.075	79.583	-1.492	-1,8%	15,9%
Turkey	62.757	77.486	14.729	23,5%	15,4%
Morocco	35.622	36.607	985	2,8%	7,3%
Greece	18.723	17.379	-1.344	-7,2%	3,5%
Slovenia	6.248	16.716	10.468	167,5%	3,3%
Romania	16.708	14.638	-2.070	-12,4%	2,9%
Israel	12.244	9.838	-2.406	-19,7%	2,0%
Germany	4.076	4.947	871	21,4%	1,0%
Remainder	57.146	16.968	-40.178	-70,3%	3,4%



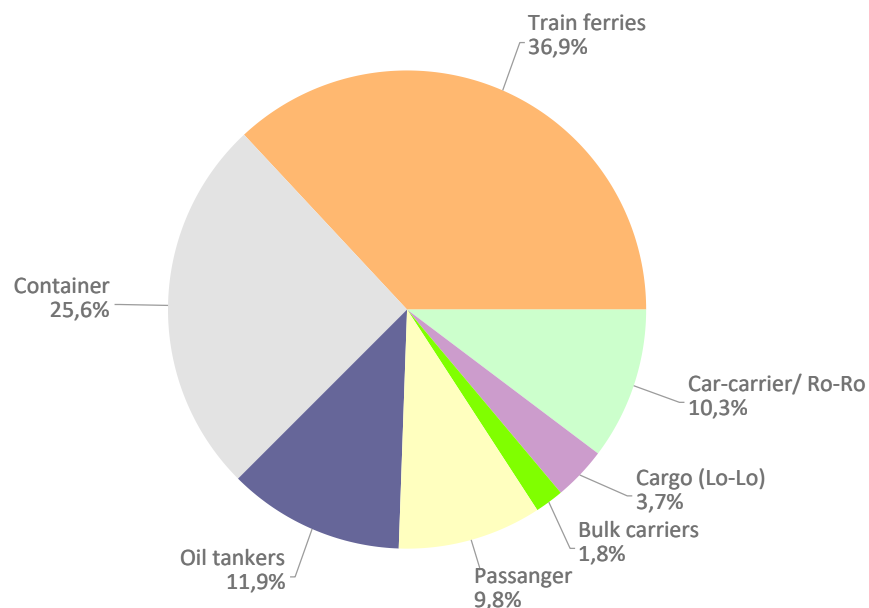
VESSELS TRAFFIC

Vessels traffic	Monthly accumulated		
	2023	2024	%
Number of calls	8.113	7.772	-4,2%
Tonnage	348.558.463	339.974.585	-2,5%
Average tonnes	42.963	43.744	1,8%

Type of vessels	Monthly accumulated					
	2023		2024		%	
	Calls	GT	Calls	GT	Calls	GT
Total	8.113	348.558.463	7.772	339.974.585	-4,2%	-2,5%
Car-carrier/ Ro-Ro	840	44.572.455	802	41.881.456	-4,5%	-6,0%
Cargo (Lo-Lo)	332	2.053.924	286	2.599.476	-13,9%	26,6%
Bulk carriers	138	3.943.250	140	4.083.986	1,4%	3,6%
Passanger	772	95.133.333	758	92.592.486	-1,8%	-2,7%
Oil tankers	895	17.685.465	925	16.675.441	3,4%	-5,7%
Container	2.054	93.707.646	1.993	97.711.633	-3,0%	4,3%
Train ferries	3.082	91.462.390	2.868	84.430.107	-6,9%	-7,7%

Type of vessels (monthly accumulated 2024)	Domestic		Foreign	
	Calls	GT	Calls	GT
Total	2.894	71.751.264	4.878	268.223.321
Car-carrier/ Ro-Ro	55	1.132.220	747	40.749.236
Cargo (Lo-Lo)	30	157.099	256	2.442.377
Bulk carriers	10	185.672	130	3.898.314
Passanger	120	8.845.250	638	83.747.236
Oil tankers	95	1.126.624	830	15.548.817
Container	311	4.102.776	1.682	93.608.857
Train ferries	2.273	56.201.623	595	28.228.484

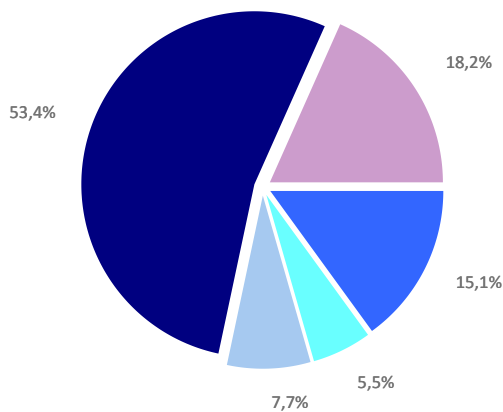
Distribution by type of vessel



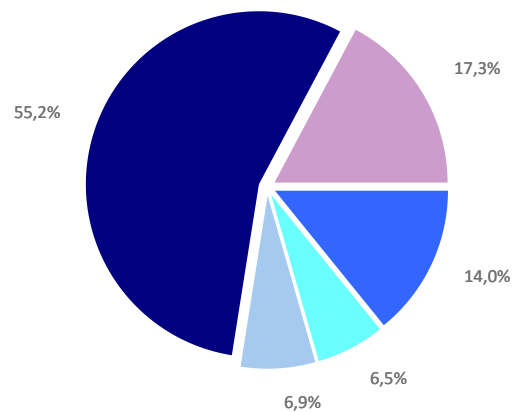
GOODS TRAFFIC

Type of packaging and navigation	Monthly accumulated 2023			Monthly accumulated 2024			%
	Domestic	Foreign	Total	Domestic	Foreign	Total	
Hydrocarbons	703.468	7.982.008	8.685.476	667.524	8.153.852	8.821.375	1,6%
Incoming	538.033	6.670.696	7.208.729	420.315	6.394.691	6.815.006	-5,5%
Outgoing	165.435	1.311.312	1.476.747	247.209	1.759.161	2.006.369	35,9%
Other liquid bulk	150.679	3.023.321	3.174.000	484.011	3.626.341	4.110.351	29,5%
Incoming	90.615	2.012.148	2.102.764	386.888	2.483.427	2.870.315	36,5%
Outgoing	60.063	1.011.173	1.071.236	97.123	1.142.914	1.240.037	15,8%
Dry bulk	132.087	4.300.691	4.432.778	82.932	4.276.165	4.359.097	-1,7%
Incoming	106.989	2.382.384	2.489.373	77.667	2.522.038	2.599.705	4,4%
Outgoing	25.098	1.918.307	1.943.405	5.265	1.754.127	1.759.392	-9,5%
Containerized cargo	1.296.335	29.402.916	30.699.252	1.269.375	33.437.345	34.706.720	13,1%
Incoming	384.877	14.088.360	14.473.237	383.327	16.175.062	16.558.389	14,4%
Outgoing	911.458	15.314.556	16.226.014	886.048	17.262.283	18.148.331	11,8%
Non-containerized cargo	5.224.290	5.230.232	10.454.523	5.505.599	5.368.501	10.874.100	4,0%
Incoming	1.718.795	2.650.188	4.368.983	1.817.544	2.677.714	4.495.258	2,9%
Outgoing	3.505.495	2.580.044	6.085.540	3.688.055	2.690.787	6.378.842	4,8%
Total general cargo	6.520.626	34.633.148	41.153.774	6.774.974	38.805.846	45.580.820	10,8%
Incoming	2.103.672	16.738.548	18.842.220	2.200.871	18.852.776	21.053.647	11,7%
Outgoing	4.416.953	17.894.601	22.311.554	4.574.103	19.953.070	24.527.173	9,9%
Total throughput (tonnes)	7.506.859	49.939.168	57.446.027	8.009.440	54.862.203	62.871.643	9,4%
Incoming	2.839.310	27.803.776	30.643.086	3.085.741	30.252.932	33.338.672	8,8%
Outgoing	4.667.549	22.135.392	26.802.942	4.923.700	24.609.271	29.532.971	10,2%
Container traffic (TEU)	205.534	2.795.019	3.000.552	203.075	3.385.369	3.588.444	19,6%
Incoming	107.307	1.399.584	1.506.891	105.346	1.694.877	1.800.223	19,5%
Outgoing	98.227	1.395.435	1.493.661	97.729	1.690.493	1.788.221	19,7%

Distribution by type of packaging 2023

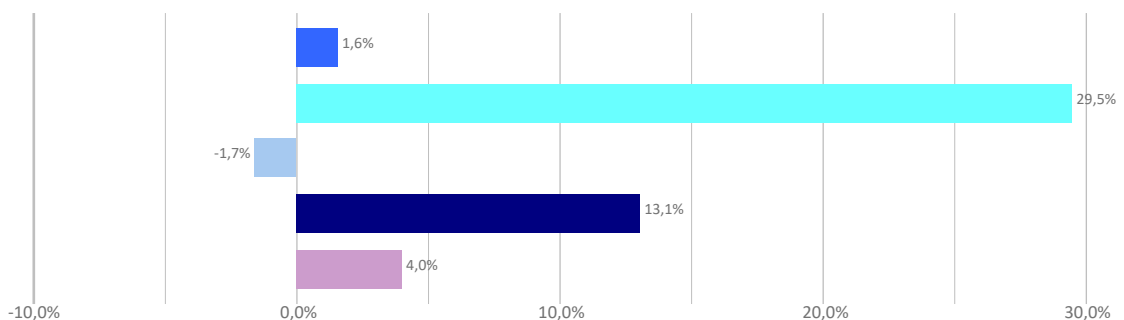


Distribution by type of packaging 2024



Hydrocarbons Liquid bulk Dry bulk Containerized cargo Non Containerized cargo

Annual growth by type of packaging



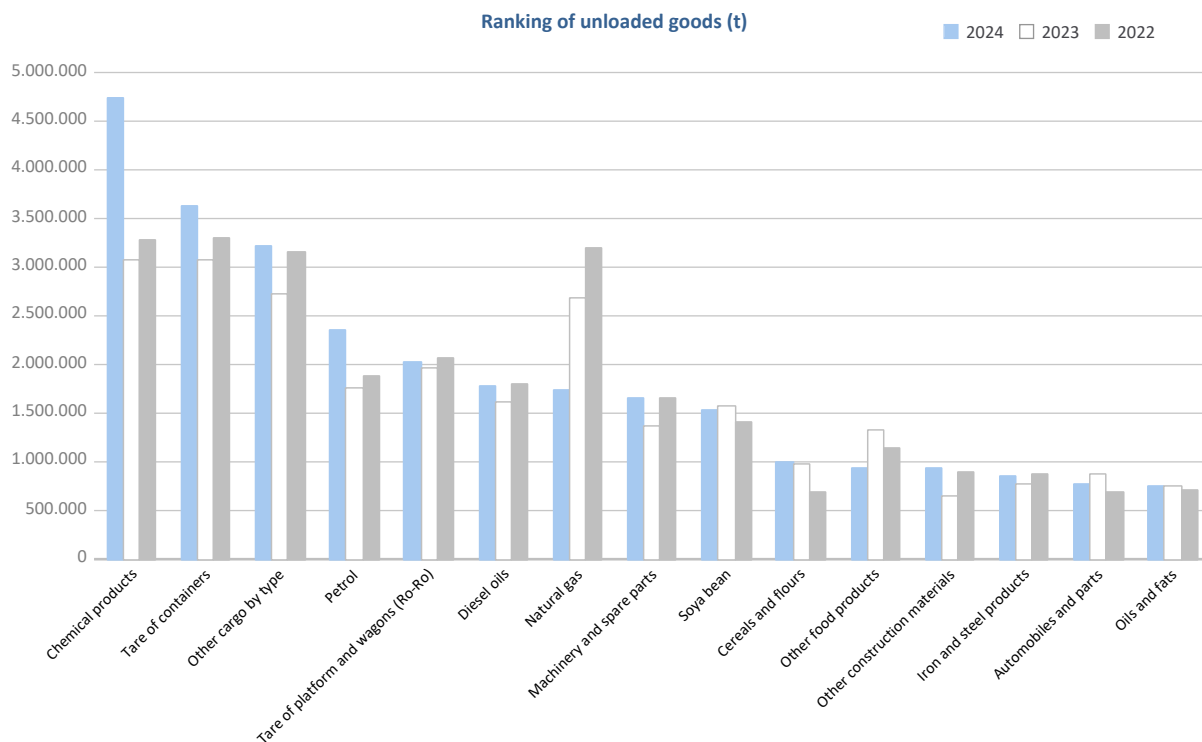
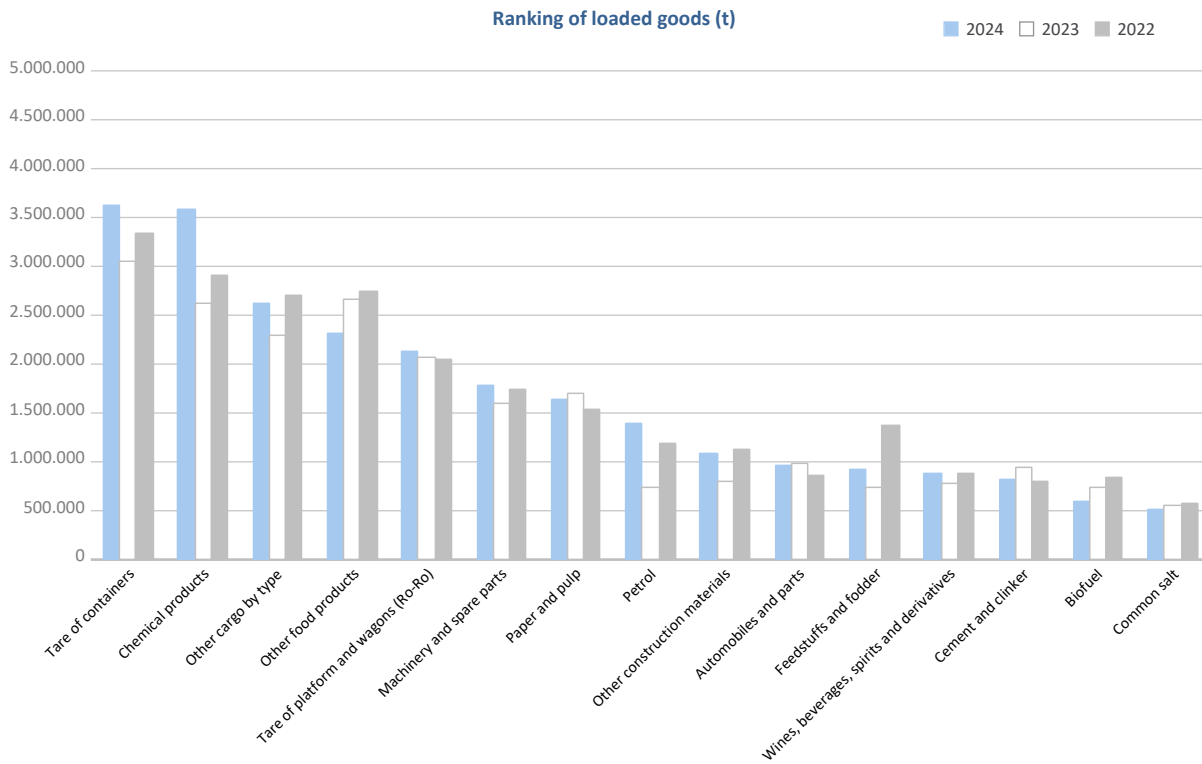
GOODS TRAFFIC

Goods by classification 4.3.7.	Monthly accumulated				% of total accum. 2024
	2023	2024	Diff. 24-23	%	
Tonnes	57.446.027	62.871.643	5.425.616	9,4%	100%
Energy	10.314.809	10.112.800	-202.010	-2,0%	16,1%
Crude oil	34	1.008	974	2834,6%	0,0%
Fuel oil	1.113.743	824.137	-289.606	-26,0%	1,3%
Diesel oils	1.954.245	2.192.811	238.566	12,2%	3,5%
Petrol	2.503.614	3.739.223	1.235.610	49,4%	5,9%
Other petroleum products	266.933	298.135	31.202	11,7%	0,5%
Petroleum fuel gasses	53.864	62.182	8.318	15,4%	0,1%
Coal	69.668	52.835	-16.833	-24,2%	0,1%
Natural gas	2.926.866	1.854.111	-1.072.755	-36,7%	2,9%
Biofuel	1.425.841	1.088.356	-337.485	-23,7%	1,7%
Iron, steel and metallurgical products	2.540.466	2.633.814	93.348	3,7%	4,2%
Iron ore	4.032	9.540	5.508	136,6%	0,0%
Other minerals and metallic waste	362.367	545.740	183.373	50,6%	0,9%
Scrap iron	539.323	362.976	-176.348	-32,7%	0,6%
Iron and steel products	1.179.493	1.255.864	76.370	6,5%	2,0%
Other metallurgical products	455.250	459.695	4.445	1,0%	0,7%
Non-metallic minerals	962.082	1.006.307	44.226	4,6%	1,6%
Common salt	570.302	530.077	-40.225	-7,1%	0,8%
Other non-metallic minerals	391.780	476.230	84.451	21,6%	0,8%
Fertilizers	643.883	765.645	121.763	18,9%	1,2%
Phosphates	219	176	-42	-19,4%	0,0%
Potashes	451.177	521.795	70.618	15,7%	0,8%
Natural/artificial fertilizer	192.486	243.673	51.187	26,6%	0,4%
Chemicals	5.695.295	8.315.027	2.619.732	46,0%	13,2%
Chemical products	5.695.295	8.315.027	2.619.732	46,0%	13,2%
Construction materials	2.453.983	2.903.565	449.582	18,3%	4,6%
Asphalt	7.932	10.364	2.432	30,7%	0,0%
Cement and clinker	990.007	872.192	-117.816	-11,9%	1,4%
Other construction materials	1.456.044	2.021.009	564.966	38,8%	3,2%
Agriculture, livestock and food	12.003.685	11.896.327	-107.357	-0,9%	18,9%
Cereals and flours	1.125.763	1.216.926	91.163	8,1%	1,9%
Soya bean	1.785.611	1.610.286	-175.325	-9,8%	2,6%
Fruits, vegetables, pulses	495.611	518.429	22.818	4,6%	0,8%
Wines, beverages, spirits and derivatives	899.895	1.125.378	225.483	25,1%	1,8%
Canned goods	309.908	297.270	-12.638	-4,1%	0,5%
Tobacco, coffee, cocoa	733.526	907.173	173.647	23,7%	1,4%
Oils and fats	1.152.748	1.202.817	50.070	4,3%	1,9%
Other food products	4.000.220	3.256.464	-743.756	-18,6%	5,2%
Frozen fish	632.862	602.964	-29.898	-4,7%	1,0%
Feedstuffs and fodder	867.541	1.158.620	291.079	33,6%	1,8%
Other cargo	10.821.387	12.094.050	1.272.663	11,8%	19,2%
Timber	405.445	454.973	49.528	12,2%	0,7%
Paper and pulp	2.447.285	2.377.126	-70.159	-2,9%	3,8%
Machinery and spare parts	2.956.603	3.431.555	474.952	16,1%	5,5%
Other cargo by type	5.012.053	5.830.396	818.343	16,3%	9,3%
Vehicles and transport parts	12.010.438	13.144.107	1.133.669	9,4%	20,9%
Automobiles and parts	1.853.021	1.731.715	-121.306	-6,5%	2,8%
Tare of platform and wagons (Ro-Ro)	4.022.918	4.148.402	125.484	3,1%	6,6%
Tare of containers	6.134.499	7.263.991	1.129.491	18,4%	11,6%

GOODS TRAFFIC

Goods by classification 4.3.7.

Ranking of goods (tonnes)

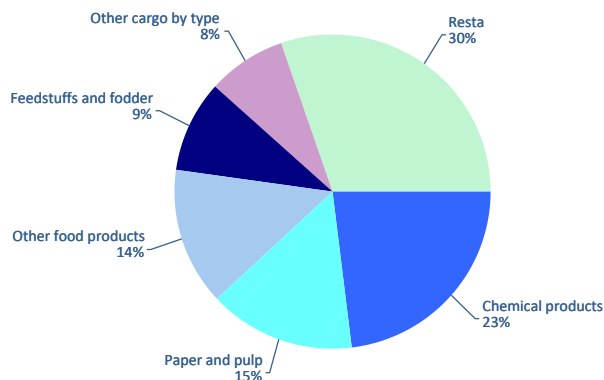


GOODS TRAFFIC

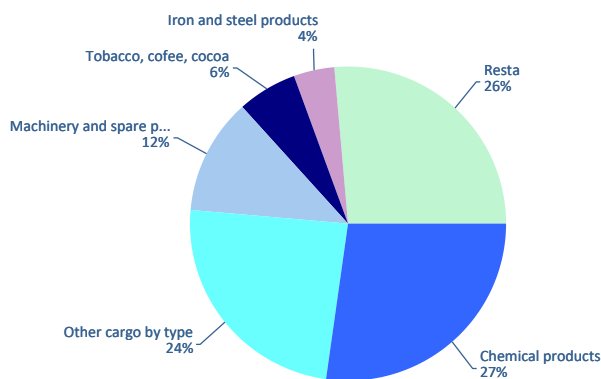
Containerized goods by classification 4.3.7. (Tares & transits not included)

Containerized goods classification	Loaded			Unloaded			Total monthly accumulated		
	2023	2024	%	2023	2024	%	2023	2024	%
Total tonnes (tares & transits not included)	7.227.029	7.563.896	4,7%	5.378.570	5.861.783	9,0%	12.605.599	13.425.679	6,5%
Chemical products	1.434.968	1.734.365	20,9%	1.389.270	1.589.075	14,4%	2.824.238	3.323.440	17,7%
Other cargo by type	596.350	610.362	2,3%	1.259.349	1.418.688	12,7%	1.855.699	2.029.050	9,3%
Paper and pulp	1.220.360	1.148.917	-5,9%	162.436	219.114	34,9%	1.382.797	1.368.031	-1,1%
Other food products	1.096.085	1.061.968	-3,1%	96.700	57.085	-41,0%	1.192.785	1.119.053	-6,2%
Machinery and spare parts	427.536	409.728	-4,2%	691.291	707.419	2,3%	1.118.828	1.117.147	-0,2%
Feedstuffs and fodder	586.302	717.110	22,3%	49.823	99.912	100,5%	636.126	817.022	28,4%
Other construction materials	241.363	271.476	12,5%	205.303	213.886	4,2%	446.666	485.362	8,7%
Tobacco, cofee, cocoa	72.777	74.899	2,9%	300.768	355.131	18,1%	373.545	430.031	15,1%
Wines, beverages, spirits and derivatives	385.844	383.594	-0,6%	35.139	41.316	17,6%	420.983	424.911	0,9%
Iron and steel products	156.077	147.138	-5,7%	246.652	248.399	0,7%	402.729	395.537	-1,8%
Automobiles and parts	122.304	116.605	-4,7%	196.732	237.258	20,6%	319.036	353.864	10,9%
Other minerals and metallic waste	166.371	194.062	16,6%	26.152	27.200	4,0%	192.523	221.262	14,9%
Other metallurgical products	82.676	74.881	-9,4%	149.977	139.578	-6,9%	232.653	214.459	-7,8%
Other non-metallic minerals	104.012	85.262	-18,0%	82.601	81.666	-1,1%	186.613	166.929	-10,5%
Oils and fats	125.770	113.747	-9,6%	39.391	33.758	-14,3%	165.161	147.505	-10,7%
Canned goods	65.497	61.727	-5,8%	93.001	79.363	-14,7%	158.498	141.090	-11,0%
Fruits, vegetables, pulses	35.768	35.376	-1,1%	127.111	103.247	-18,8%	162.879	138.623	-14,9%
Biofuel	92.139	99.252	7,7%	24.579	28.133	14,5%	116.718	127.386	9,1%
Cereals and flours	53.225	48.982	-8,0%	29.319	29.232	-0,3%	82.544	78.213	-5,2%
Natural/artificial fertilizer	39.138	44.480	13,6%	49.407	19.533	-60,5%	88.545	64.013	-27,7%
Scrap iron	24.829	24.733	-0,4%	20.329	25.801	26,9%	45.157	50.534	11,9%
Frozen fish	5.607	2.007	-64,2%	35.066	40.951	16,8%	40.674	42.958	5,6%
Timber	10.835	11.286	4,2%	21.099	23.079	9,4%	31.934	34.366	7,6%
Other petroleum products	17.986	21.023	16,9%	13.244	12.170	-8,1%	31.230	33.193	6,3%
Common salt	28.501	28.330	-0,6%	2.124	2.415	13,7%	30.625	30.745	0,4%
Coal	1.785	1.816	1,7%	22.302	16.777	-24,8%	24.087	18.593	-22,8%
Petroleum fuel gasses	7.124	15.137	112,5%	930	394	-57,6%	8.054	15.530	92,8%
Fuel oil	6.864	7.252	5,7%	5.441	5.711	5,0%	12.305	12.963	5,3%
Cement and clinker	12.136	10.864	-10,5%	77	28	-63,3%	12.213	10.893	-10,8%
Asphalt	5.770	6.802	17,9%	16	35	120,3%	5.786	6.837	18,2%
Soya bean	3	7	133,9%	1.016	3.474	241,9%	1.019	3.481	241,6%
Potashes	189	259	36,7%	1.518	1.714	12,9%	1.707	1.973	15,5%
Crude oil	12	28	125,1%	22	192	772,4%	34	220	539,6%
Diesel oils	606	155	-74,5%	0	0		607	155	-74,5%
Phosphates	107	111	4,2%	0	20		107	131	23,0%
Iron ore	72	101	39,5%	367	4	-98,9%	439	105	-76,1%
Petrol	36	54	50,9%	16	22	39,0%	52	76	47,2%
Natural gas	2	0		0	0		2	0	

Distribution of main goods Loaded 2024



Distribution of main goods Unloaded 2024

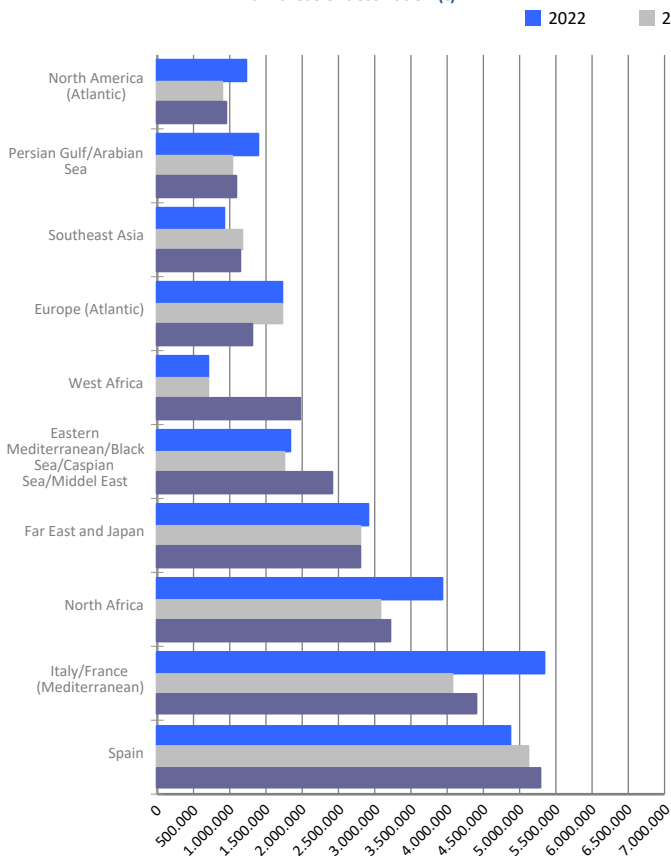


MARITIME TRAFFIC BY ORIGIN/DESTINATION

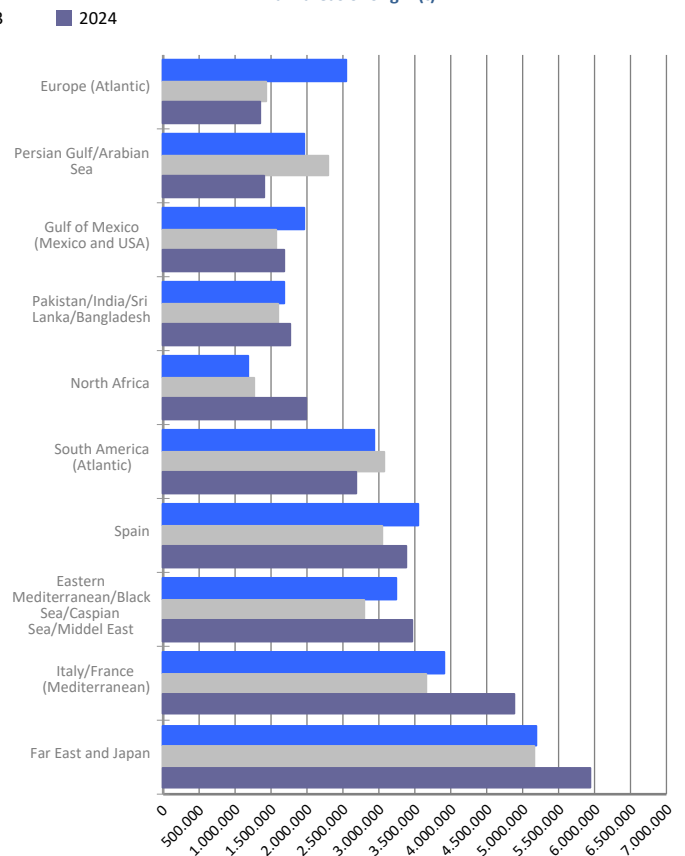
Geographical areas. Tonnes

Geographical areas	Monthly accumulated				% of total accum. 2024
	2023	2024	Diff. 24-23	%	
Tonnes	57.446.027	62.871.643	5.425.616	9,4%	100%
Italy/France (Mediterranean)	7.749.712	9.305.656	1.555.943	20,1%	14,8%
Far East and Japan	7.954.070	8.740.682	786.612	9,9%	13,9%
Spain	8.181.280	8.675.760	494.479	6,0%	13,8%
Eastern Mediterranean/Black Sea/Caspian Sea/Middel	4.557.562	5.886.651	1.329.088	29,2%	9,4%
North Africa	4.346.950	5.204.280	857.330	19,7%	8,3%
South America (Atlantic)	3.526.534	3.263.763	-262.771	-7,5%	5,2%
Europe (Atlantic)	3.148.632	2.655.001	-493.632	-15,7%	4,2%
Pakistan/India/Sri Lanka/Bangladesh	2.390.516	2.587.983	197.467	8,3%	4,1%
West Africa	1.398.102	2.571.241	1.173.139	83,9%	4,1%
Persian Gulf/Arabian Sea	3.339.943	2.510.025	-829.918	-24,8%	4,0%
Gulf of Mexico (Mexico and USA)	2.348.881	2.494.734	145.853	6,2%	4,0%
Southeast Asia	2.295.754	2.460.796	165.041	7,2%	3,9%
North America (Atlantic)	1.327.484	1.482.705	155.221	11,7%	2,4%
Red Sea	864.272	1.449.903	585.631	67,8%	2,3%
Central America and Caribbean	1.087.041	1.033.941	-53.099	-4,9%	1,6%
Unknown area (Tare of empty containers)	495.062	663.817	168.755	34,1%	1,1%
South-Eastern Africa/Indian Ocean	477.305	537.427	60.122	12,6%	0,9%
South America (Pacific)	533.651	531.137	-2.514	-0,5%	0,8%
Canada (Atlantic) and Great Lakes	1.108.723	404.951	-703.772	-63,5%	0,6%
Australia, New Zealand/Pacific Islands	201.729	218.235	16.505	8,2%	0,3%
North America (Pacific)	112.821	192.957	80.136	71,0%	0,3%

Main areas of destination (t)



Main areas of origin (t)

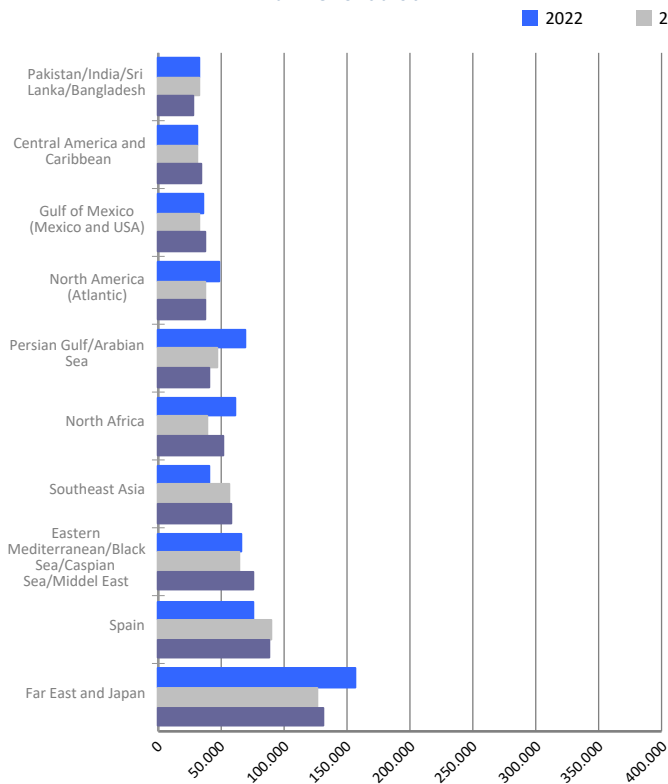


MARITIME TRAFFIC BY ORIGIN/DESTINATION

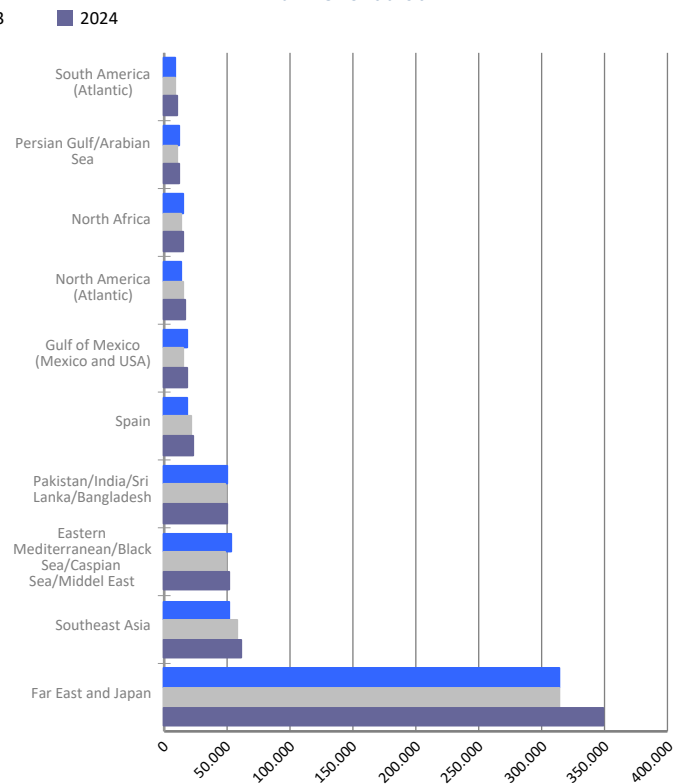
Geographical areas. Full TEU non transit

Geographical areas	Monthly accumulated				% of total accum. 2024
	2023	2024	Diff. 24-23	%	
Full TEU non transit	1.298.281	1.378.937	80.655	6,2%	100%
Far East and Japan	441.735	479.546	37.812	8,6%	34,8%
Eastern Mediterranean/Black Sea/Caspian Sea/Middel	113.212	127.599	14.387	12,7%	9,3%
Southeast Asia	113.639	118.579	4.940	4,3%	8,6%
Spain	111.557	111.304	-253	-0,2%	8,1%
Pakistan/India/Sri Lanka/Bangladesh	80.169	77.776	-2.393	-3,0%	5,6%
North Africa	53.549	66.708	13.160	24,6%	4,8%
Gulf of Mexico (Mexico and USA)	48.338	56.218	7.880	16,3%	4,1%
North America (Atlantic)	51.814	55.215	3.401	6,6%	4,0%
Persian Gulf/Arabian Sea	57.830	52.914	-4.916	-8,5%	3,8%
Central America and Caribbean	38.010	39.351	1.341	3,5%	2,9%
South America (Atlantic)	32.372	34.299	1.928	6,0%	2,5%
South America (Pacific)	28.878	31.934	3.056	10,6%	2,3%
Red Sea	26.748	30.199	3.451	12,9%	2,2%
West Africa	25.926	28.965	3.039	11,7%	2,1%
South-Eastern Africa/Indian Ocean	22.614	23.526	912	4,0%	1,7%
Canada (Atlantic) and Great Lakes	12.177	12.516	339	2,8%	0,9%
Australia, New Zealand/Pacific Islands	10.822	11.467	646	6,0%	0,8%
Italy/France (Mediterranean)	18.338	8.114	-10.224	-55,8%	0,6%
North America (Pacific)	6.346	7.630	1.284	20,2%	0,6%
Europe (Atlantic)	4.212	5.079	868	20,6%	0,4%

Main areas of destination
Full TEU non transit



Main areas of origin
Full TEU non transit

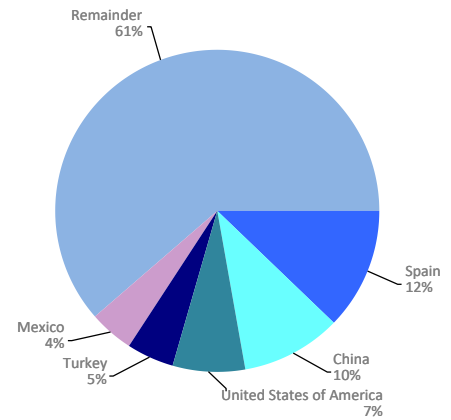


MARITIME TRAFFIC BY ORIGIN/DESTINATION

Ranking countries. Full TEU non transit

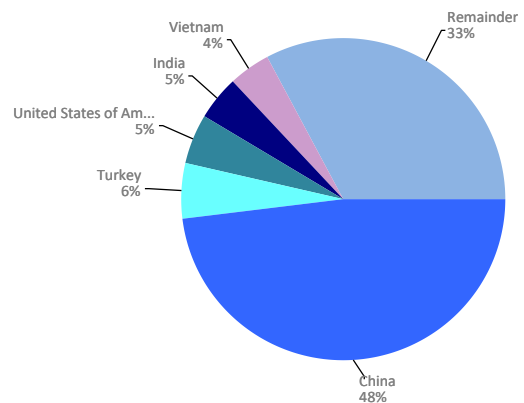
Loaded	Full TEU	% 24-23	% a/packaging
Spain	88.062	-1,8%	12,2%
China	72.626	2,4%	10,1%
United States of America	52.114	7,3%	7,2%
Turkey	34.527	21,1%	4,8%
Mexico	31.499	15,1%	4,4%
Morocco	28.599	42,7%	4,0%
Saudi Arabia	24.259	-2,8%	3,4%
United Arab Emirates	22.438	-15,1%	3,1%
India	21.595	-17,8%	3,0%
Japan	21.507	-2,0%	3,0%
Malaysia	17.064	5,6%	2,4%
Korea (South)	16.302	6,9%	2,3%
Vietnam	15.879	18,0%	2,2%
Israel	15.390	18,2%	2,1%
Egypt	14.471	29,1%	2,0%
Remainder	245.527	1,4%	34,0%
TOTAL	721.858	3,7%	100%

Main countries. Loaded



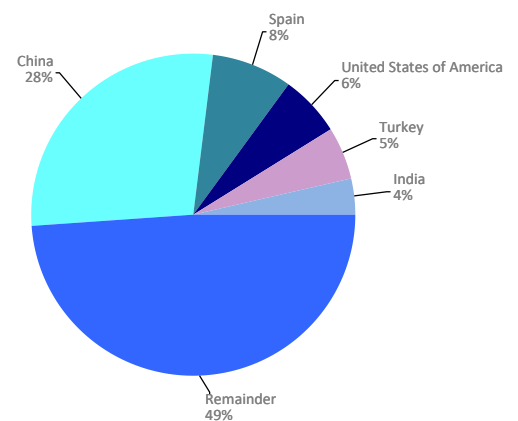
Unloaded	Full TEU	% 24-23	% a/packaging
China	315.590	13,2%	48,0%
Turkey	37.121	6,8%	5,6%
United States of America	31.895	16,6%	4,9%
India	29.702	7,6%	4,5%
Vietnam	26.561	5,8%	4,0%
Spain	23.242	6,3%	3,5%
Korea (South)	19.358	-9,1%	2,9%
Saudi Arabia	13.457	38,8%	2,0%
Egypt	11.379	8,5%	1,7%
Bangladesh	11.210	-9,5%	1,7%
Thailand	9.079	29,0%	1,4%
Cambodia	8.752	29,1%	1,3%
Indonesia	8.686	11,7%	1,3%
Brazil	8.562	25,4%	1,3%
Greece	8.467	3,6%	1,3%
Remainder	94.020	-2,6%	14,3%
TOTAL	657.079	9,1%	100%

Main countries. Unloaded



Total	Full TEU	% 24-23	% a/packaging
China	388.216	11,0%	28,2%
Spain	111.304	-0,2%	8,1%
United States of America	84.008	10,6%	6,1%
Turkey	71.648	13,3%	5,2%
India	51.297	-4,8%	3,7%
Vietnam	42.440	10,1%	3,1%
Mexico	37.751	12,9%	2,7%
Saudi Arabia	37.716	8,8%	2,7%
Korea (South)	35.660	-2,5%	2,6%
Morocco	30.825	38,4%	2,2%
Japan	27.197	-4,8%	2,0%
Egypt	25.850	19,1%	1,9%
United Arab Emirates	25.707	-12,8%	1,9%
Brazil	21.997	14,1%	1,6%
Greece	21.882	11,8%	1,6%
Remainder	365.441	1,5%	26,5%
TOTAL	1.378.937	6,2%	100%

Main countries. Total



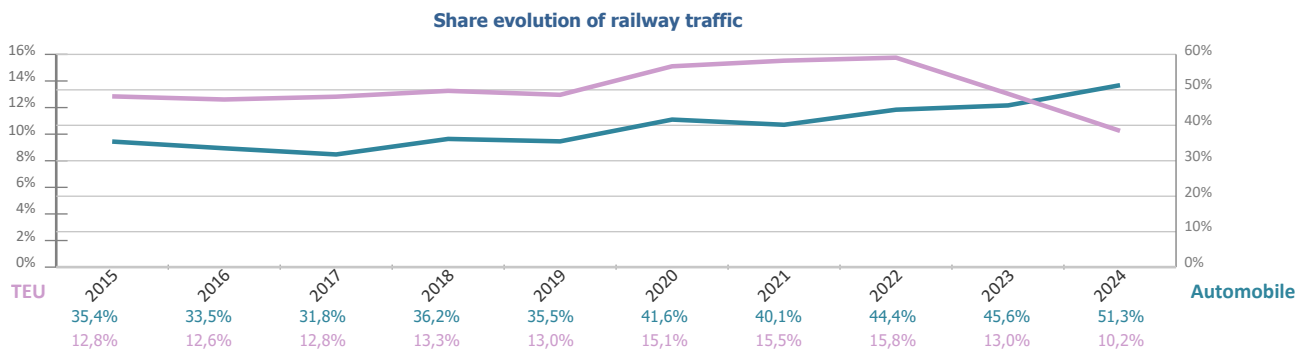
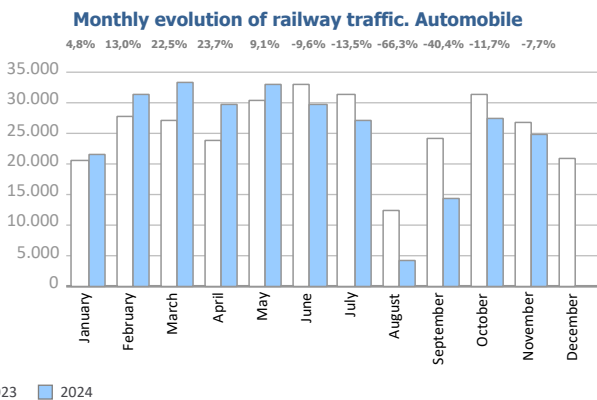
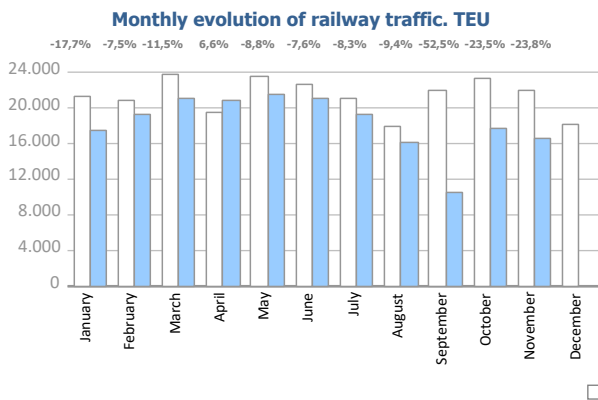
RAILWAY TRAFFIC

Monthly evolution of railway traffic. TEU

Monthly evolution of railway traffic	TEU 2023			TEU 2024			%		% of total port traffic 2024
	Loaded	Unloaded	Total	Loaded	Unloaded	Total	Monthly	Accumulated	
January	10.946	10.351	21.297	7.901	9.633	17.534	-17,7%	-17,7%	11,4%
February	10.012	10.850	20.862	8.751	10.545	19.296	-7,5%	-12,6%	12,2%
March	11.720	12.120	23.840	9.664	11.438	21.102	-11,5%	-12,2%	11,1%
April	9.632	9.846	19.478	10.070	10.684	20.754	6,6%	-7,9%	12,4%
May	12.232	11.299	23.531	10.133	11.320	21.453	-8,8%	-8,1%	11,2%
June	11.297	11.397	22.694	10.637	10.334	20.971	-7,6%	-8,0%	11,9%
July	10.049	10.979	21.028	9.288	9.992	19.280	-8,3%	-8,1%	10,5%
August	8.856	9.030	17.886	7.503	8.699	16.202	-9,4%	-8,2%	8,1%
September	10.815	11.129	21.944	5.460	4.964	10.424	-52,5%	-13,3%	5,8%
October	11.031	12.246	23.277	8.560	9.245	17.805	-23,5%	-14,4%	9,5%
November	10.067	11.795	21.862	7.985	8.677	16.662	-23,8%	-15,2%	9,3%
December	8.192	9.931	18.122						
Total	124.847	130.971	255.818	95.952	105.531	201.483			10,2%

Monthly evolution of railway traffic. Automobile

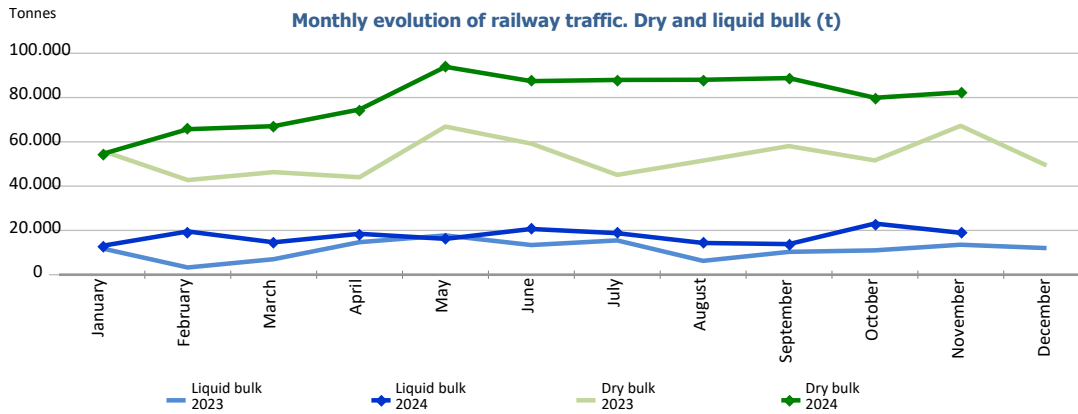
Monthly evolution of railway traffic	Automobile 2023			Automobile 2024			%		% of total port traffic 2024
	Loaded	Unloaded	Total	Loaded	Unloaded	Total	Monthly	Accumulated	
January	4.150	16.267	20.417	2.696	18.708	21.404	4,8%	4,8%	52,4%
February	5.096	22.553	27.649	4.150	27.099	31.249	13,0%	9,5%	61,5%
March	3.567	23.677	27.244	4.458	28.926	33.384	22,5%	14,2%	51,9%
April	4.515	19.415	23.930	3.573	26.030	29.603	23,7%	16,5%	55,4%
May	5.929	24.358	30.287	4.399	28.658	33.057	9,1%	14,8%	51,0%
June	5.878	27.021	32.899	4.552	25.180	29.732	-9,6%	9,9%	51,4%
July	6.807	24.450	31.257	5.752	21.286	27.038	-13,5%	6,1%	63,1%
August	1.982	10.394	12.376	799	3.375	4.174	-66,3%	1,7%	19,8%
September	5.584	18.633	24.217	1.963	12.459	14.422	-40,4%	-2,7%	40,9%
October	6.117	25.138	31.255	3.699	23.902	27.601	-11,7%	-3,8%	54,9%
November	5.350	21.525	26.875	4.076	20.732	24.808	-7,7%	-4,1%	43,2%
December	3.150	17.854	21.004						
Total	58.125	251.285	309.410	40.117	236.355	276.472			51,3%



RAILWAY TRAFFIC

Monthly evolution of railway traffic. Dry and liquid bulk. Tonnes

Monthly evolution of railway traffic	Tonnes 2023			Tonnes 2024			%	
	Dry bulk	Liquid bulk	Total	Dry bulk	Liquid bulk	Total	Monthly	Accumulated
January	55.964	11.888	67.852	54.457	13.024	67.481	-0,5%	-0,5%
February	42.746	3.263	46.009	65.710	19.534	85.244	85,3%	34,1%
March	46.334	7.014	53.348	67.073	14.630	81.703	53,2%	40,2%
April	44.027	14.701	58.728	74.604	18.473	93.077	58,5%	45,0%
May	66.894	17.738	84.632	93.873	16.191	110.064	30,1%	40,9%
June	59.200	13.398	72.598	87.416	20.649	108.065	48,9%	42,4%
July	45.081	15.485	60.566	87.962	18.748	106.710	76,2%	47,0%
August	51.511	6.251	57.762	88.033	14.326	102.359	77,2%	50,5%
September	58.090	10.320	68.410	88.794	13.828	102.622	50,0%	50,4%
October	51.617	10.995	62.612	79.898	23.100	102.998	64,5%	51,8%
November	67.236	13.547	80.783	82.379	18.912	101.291	25,4%	48,8%
December	49.345	12.016	61.361					
Total	638.045	136.616	774.661	870.199	191.415	1.061.614		



Railway traffic.

Railway gauge traffic (u)	Monthly accumulated		%	% of accumulated total 2024
	2023	2024		
Iberian gauge	6.510	5.981	-8,1%	58,5%
UIC	489	842	72,2%	8,2%
FGC	2.694	3.394	26,0%	33,2%
Total	9.693	10.217	5,4%	100%

